



# Nikon D3100 LCD Screen Replacement

Replacing your broken, cracked, or faulty Nikon D3100 LCD screen.

Written By: Jet Mejia



## INTRODUCTION

If your Nikon D3100 LCD screen is cracked, chipped, or flickering it may need to be replaced. Follow this guide to replace the LCD screen. But first take a look at this [troubleshooting page](#) to check if the problem is truly the LCD screen and not a setting issue.



### TOOLS:

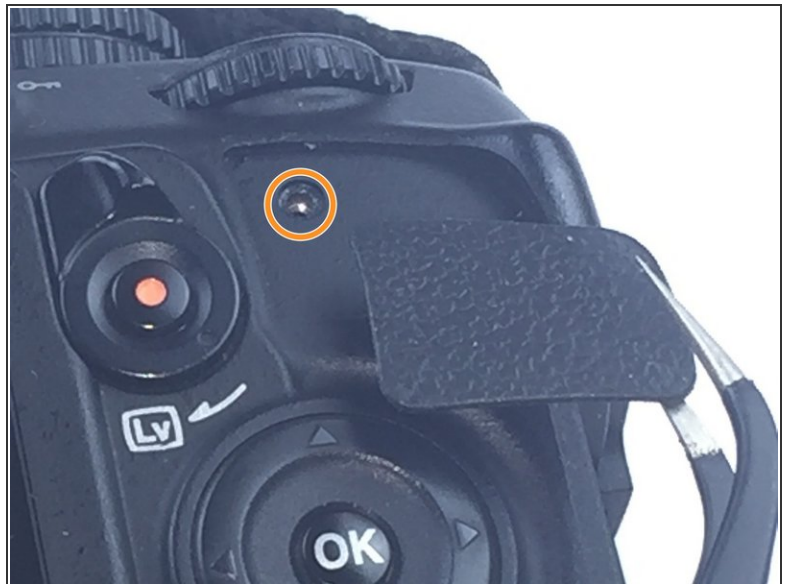
- [Phillips #00 Screwdriver](#) (1)
  - [iFixit Opening Tools](#) (1)
  - [Tweezers](#) (1)
  - [Spudger](#) (1)
  - [Heating Pad \(optional\)](#) (1)
-

## Step 1 — LCD Screen



- i Use a Phillips #00 screwdriver for all of the screws.
- Remove two of the 4mm screws indicated by the circles on the bottom side of the camera.

## Step 2



- Remove four of the 3mm screws around the eye piece located on the top of the back panel, including the screw hidden behind the auto focus label.
- Remove the 3mm screw behind the rubber grip on the top right of the back panel.



### Step 3



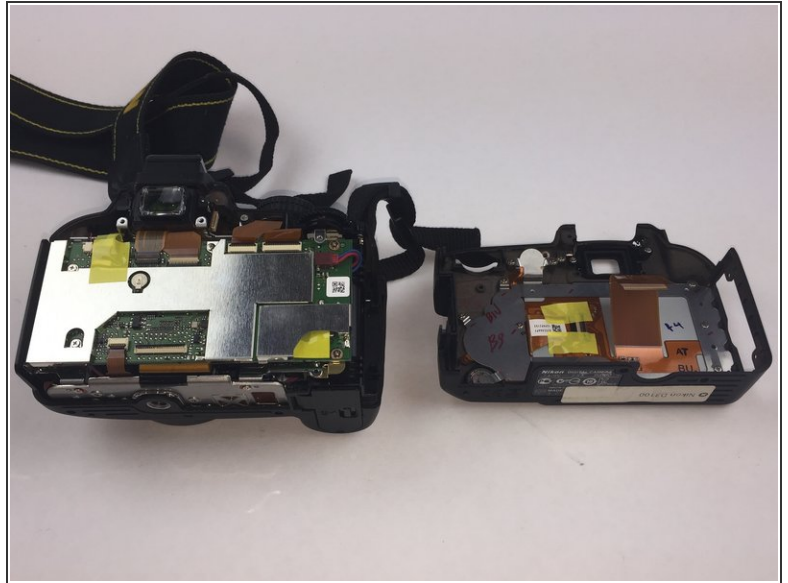
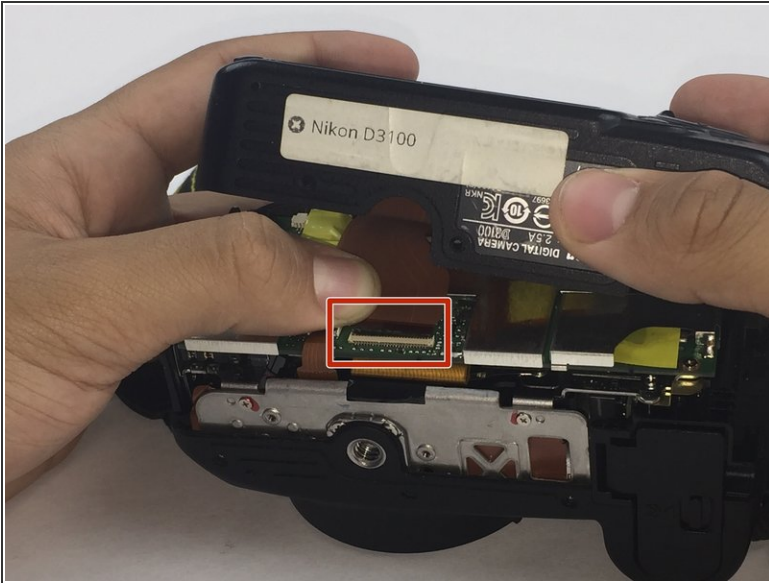
- Peel back the rubber grip on the right side of the camera using a spudger.
- ⚠ You may need a heating pad to melt the glue holding the rubber grip to the camera. If using the heating pad, use caution and handle carefully.
- Remove two of the 5mm screws under the rubber grip.

### Step 4



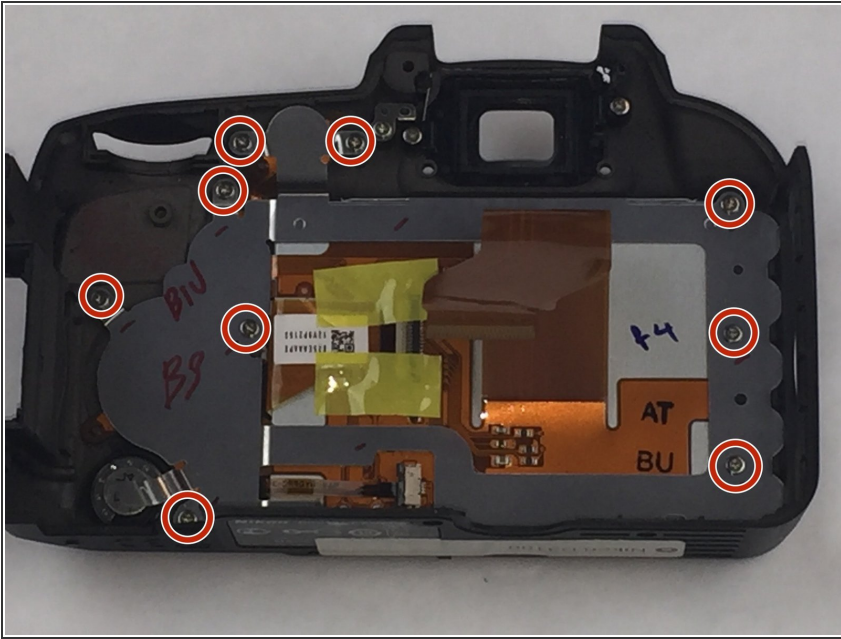
- Remove two of the 4mm screws on the left side of the camera.

## Step 5



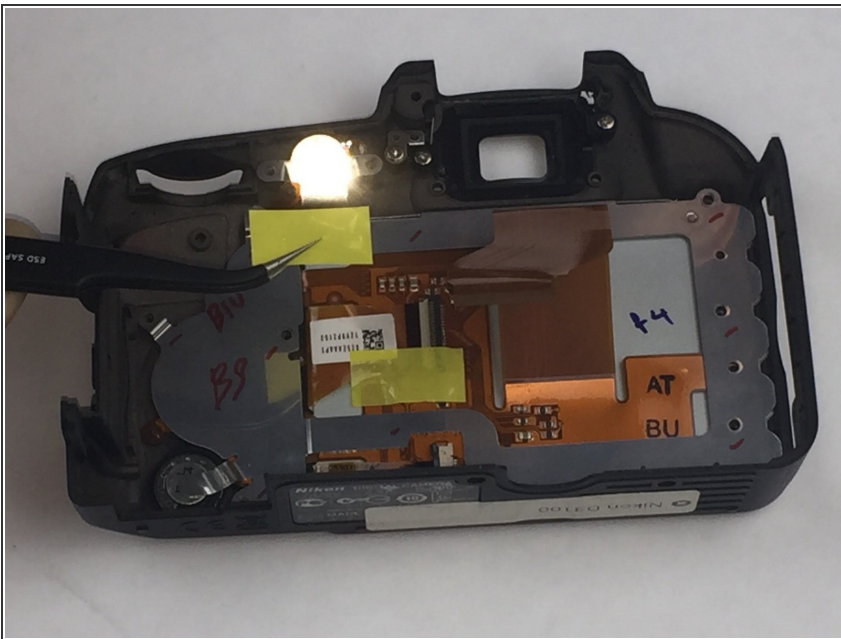
- Starting from the top, gently lift the back panel of the camera off. Slowly separate the back panel from the main body of the camera.
- ⚠ Be careful not to pull the panel out too fast or the ribbon may be damaged.
- Carefully remove the ribbon using a spudger to lift up the connector and then use tweezers to pull out the ribbon.
- Separate the back panel from the main body of the camera.

## Step 6



- ⚠ Be careful when separating the metal plate from the back panel because the speaker wire is connected to the metal plate. It can easily be torn if caution is not taken.
- Remove nine of the 3mm screws connecting the metal plate to the plastic panel.

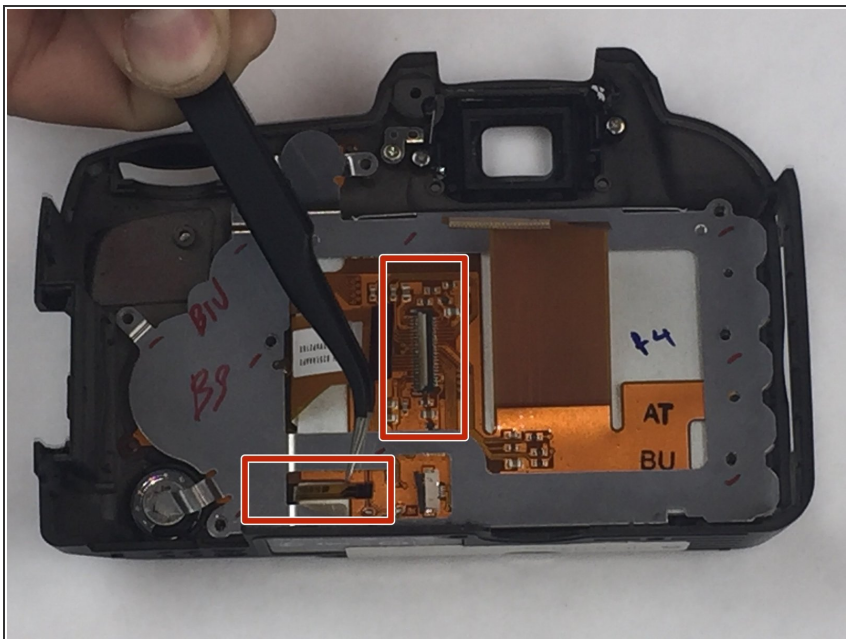
## Step 7



- ⚠ Remove the tape covering the ribbons. Be careful not to break the tape.

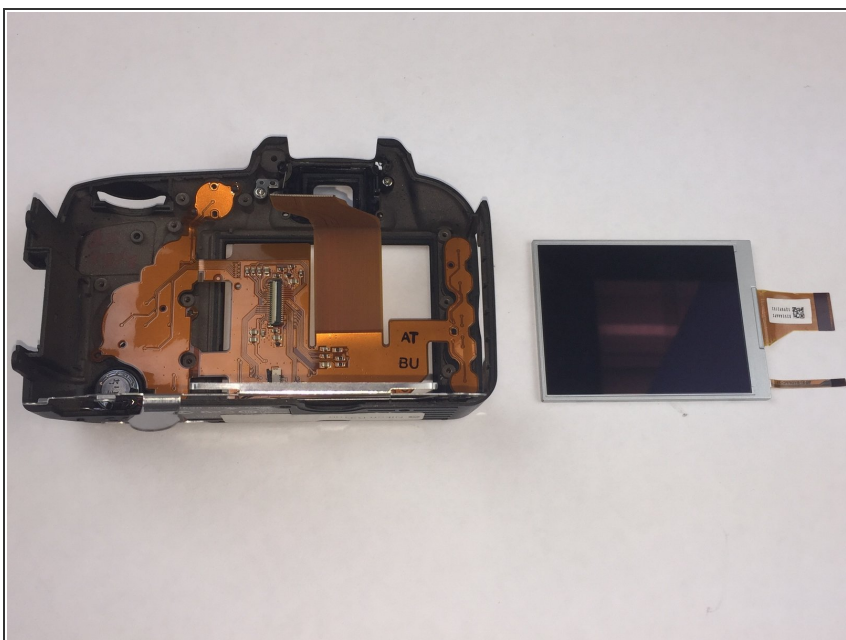


## Step 8



- Remove the two ribbons connecting the LCD screen to the metal plate using the same method from Step 5.

## Step 9



- Remove the old LCD screen from metal plate.
- ☑ Make sure the new LCD screen is clean.
- ⚠ Carefully install the new LCD screen.

To reassemble your device, follow these instructions in reverse order.