



# Nikon D3200 LCD Screen Replacement

This guide helps you replace the LCD screen. Please note that the LCD screen and the glass screen are two separate parts.

Written By: Irene Huang



---

## INTRODUCTION

This guide helps you replace the LCD screen. Please note that the LCD screen and the glass screen are two separate parts.

---



### TOOLS:

- [Phillips #00 Screwdriver](#) (1)
  - [iFixit Opening Tools](#) (1)
  - [Tweezers](#) (1)
-

## Step 1 — Battery



- Locate the battery compartment on the bottom of the camera directly below the mode dial.

## Step 2



- Find the marked arrow on the battery compartment door and firmly push following the arrow's direction to release the latch.



## Step 3



- Release the latch and allow it to completely open.
- Insert the battery by following the diagram on the inside of the compartment door.
- Close the compartment door and firmly press on the latch until you hear a clicking sound.

## Step 4 — LCD Screen



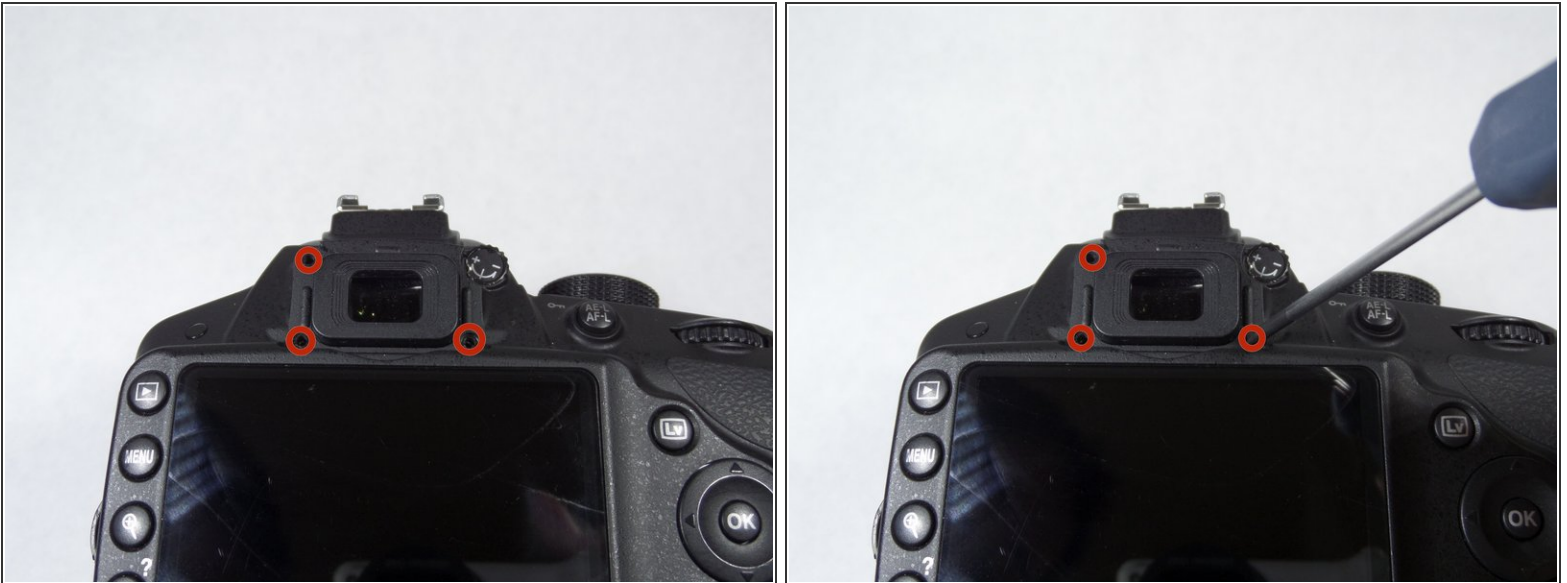
- Turn the camera so the bottom faces you.
- Locate and remove the 6 screws using a Phillips #00 screwdriver.

## Step 5



- Locate the rubber grip directly below the shutter-release button.
- Lift the rubber grip using a plastic opening tool to locate and remove the two screws underneath using a Phillips screwdriver #00.

## Step 6



- Locate and remove the 4 screws above the LCD screen, around the eyepiece. Use a razor to carefully peel the sticker off the +/- wheel to reveal the screw beneath.

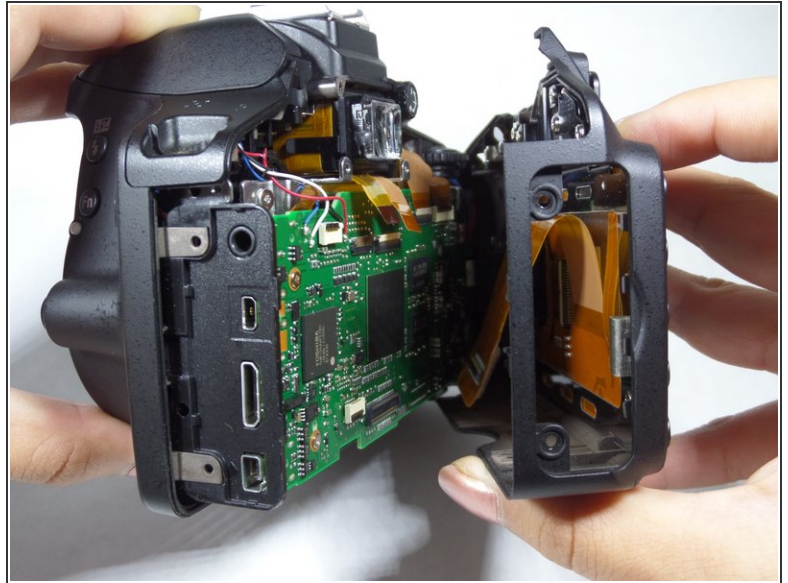
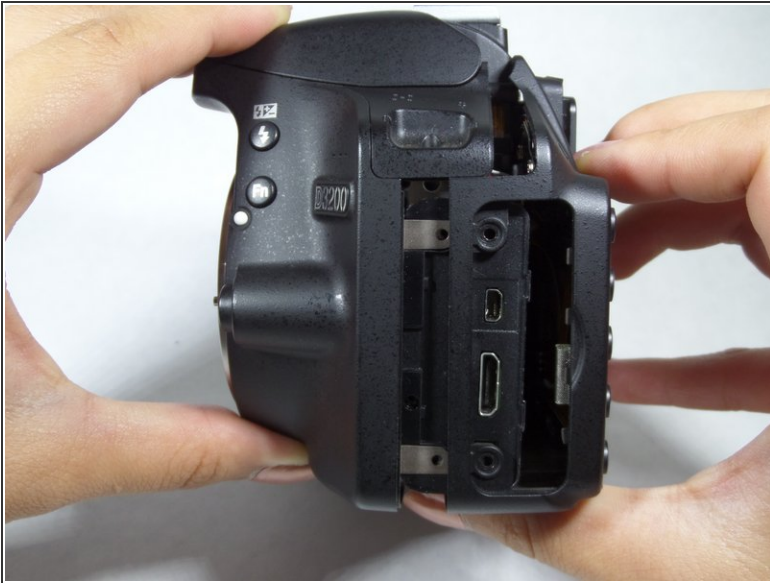
## Step 7



- Locate the connector cover left of the LCD screen.
- Unlatch the connector cover to reveal two screws.
- Remove screws.

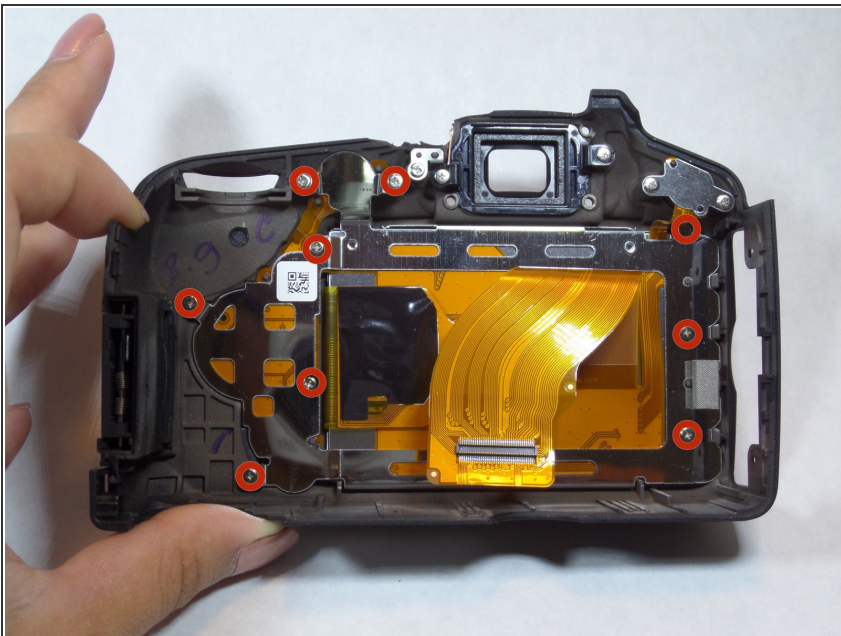


## Step 8



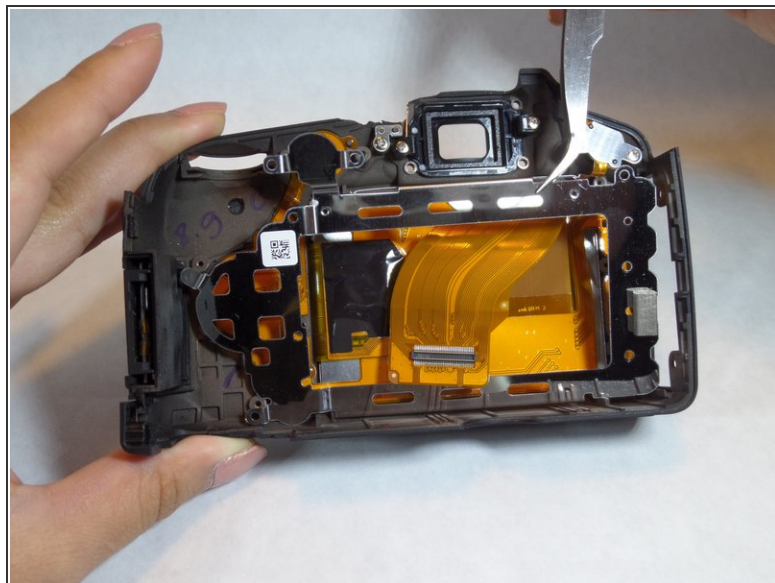
- Remove the rubber connector cover.
- Gently pull the back portion of the camera, one hand gripping the body and the other gripping the LCD screen.

## Step 9



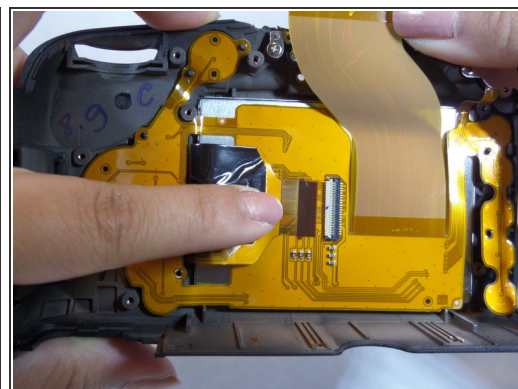
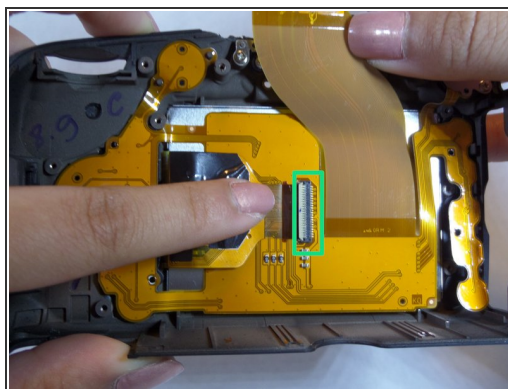
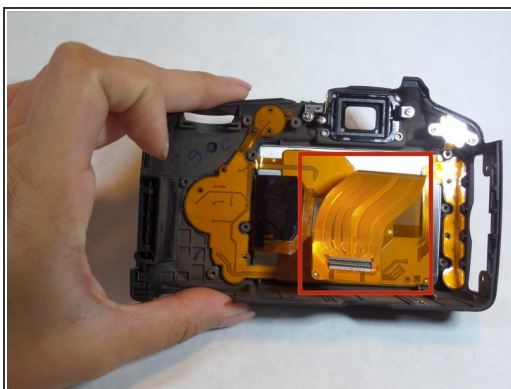
- Lay the back cover, LCD side down.
- Locate and remove the 9 screws around the silver protector plate.

## Step 10



- Using a pair of tweezers, gently lift and remove the silver protector cover.

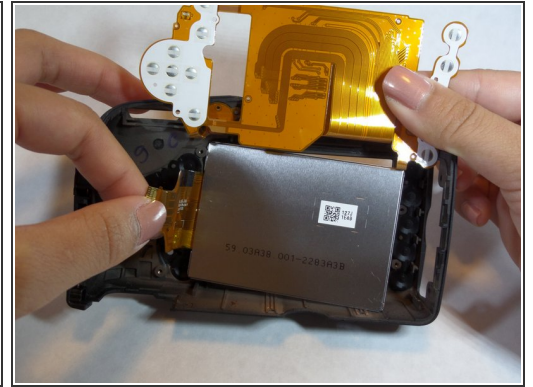
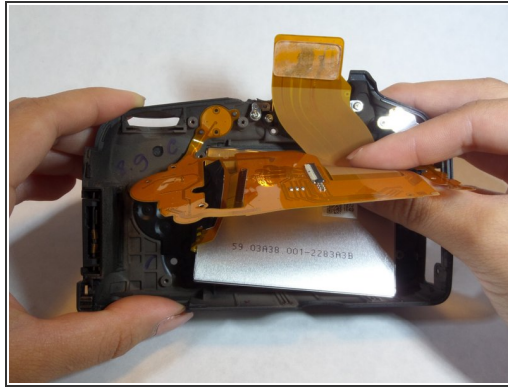
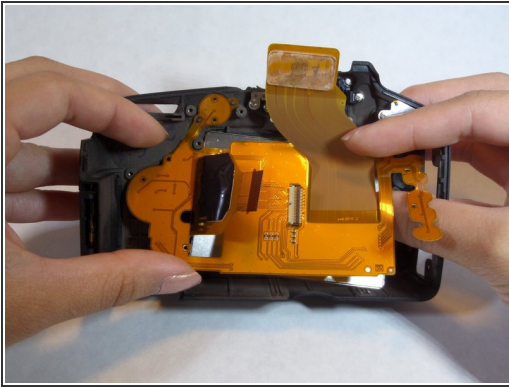
## Step 11



- Lift the yellow connector.
- Flip the white clasp using a plastic opening tool, and pull out the tab.

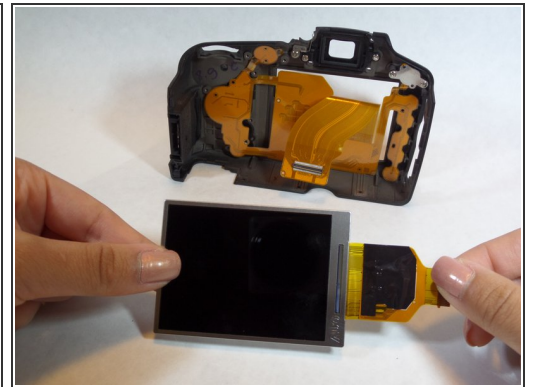


## Step 12



- Lift the yellow sheet to reveal the LCD screen.

## Step 13



- Remove LCD screen.

To reassemble your device, follow these instructions in reverse order.