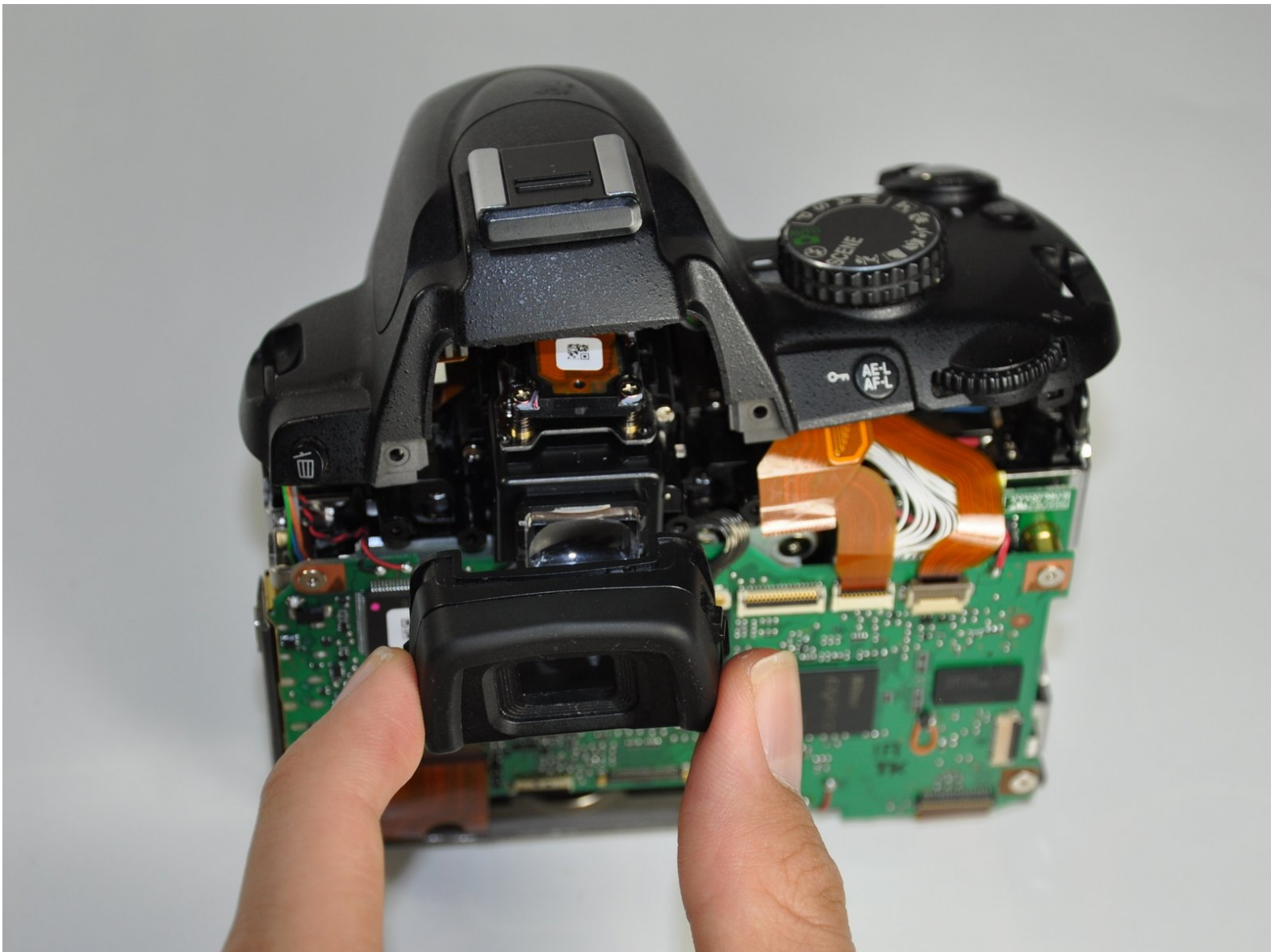




# Nikon D5000 Viewfinder Replacement

Disassembly down to the viewfinder hood and to the screen itself.

Written By: Jacob Rardin



---

## INTRODUCTION

If there is dust in the viewfinder, or the screen gets cracked, it should be removed and/or replaced.

---



### TOOLS:

- [Phillips #00 Screwdriver](#) (1)
  - [iFixit Opening Tools](#) (2)
-

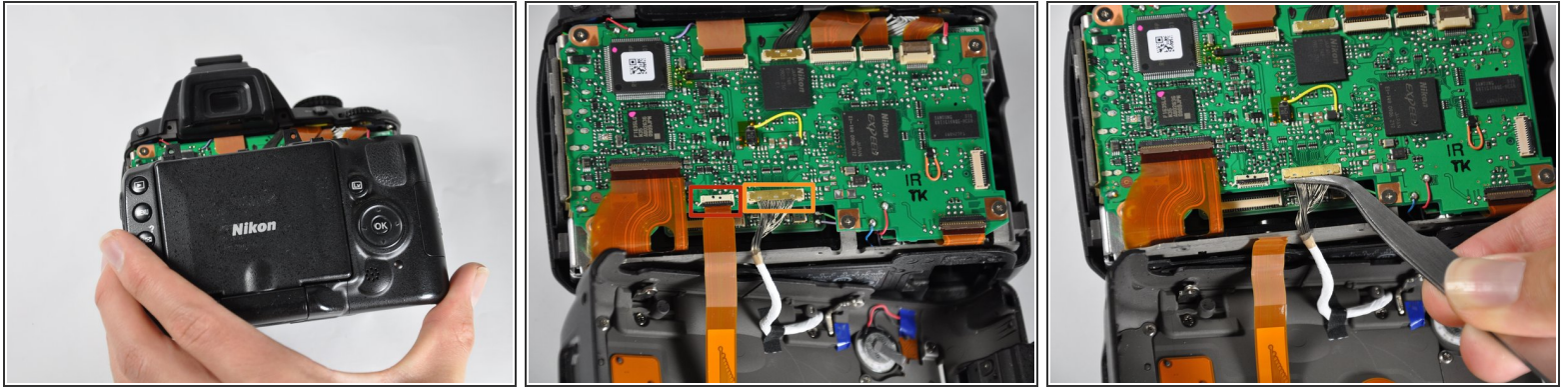
## Step 1 — Back Panel



**i** The battery door has been removed for clarity, but is not necessary. See [this guide](#) for how to remove it.

- Unscrew the eight Phillips #00 screws on the back panel:
  - Two 2.5x6mm screws above the screen.
  - One 3x6mm screw on the upper part of **each** side (two total; right side shown).
  - One 3x7.5mm screw on the lower part of **each** side (two total).
  - Two 3x4.5mm screws on the bottom.

## Step 2



- Pull the back panel up, then tilt it back. There will be two cables still holding it on.
  - ⓘ Doing this will also release the connector cover on the left side. Set it aside for now, but remember to reinstall it later.
- Disconnect the ribbon cable by flipping the black tab up, then pulling the cable out.
  - ⓘ This procedure also applies to all of the other ribbon cables in the D5000.
- Pull out the other connector by lifting it up with tweezers, or by prying it out. Fingernails also work well.

## Step 3 — Viewfinder



**i** The viewfinder is held on by the top body piece. To access it, the entire plastic body must be removed. Each piece (back, bottom, front, top) helps secure the next piece.

- Remove the bottom panel's nine Phillips #00 screws:
  - Four 3x3mm black screws.
  - Five 3x6mm black screws.
    - This 3x6mm screw is hidden under the wall adapter cover.
- Pull the bottom cover off.



## Step 4



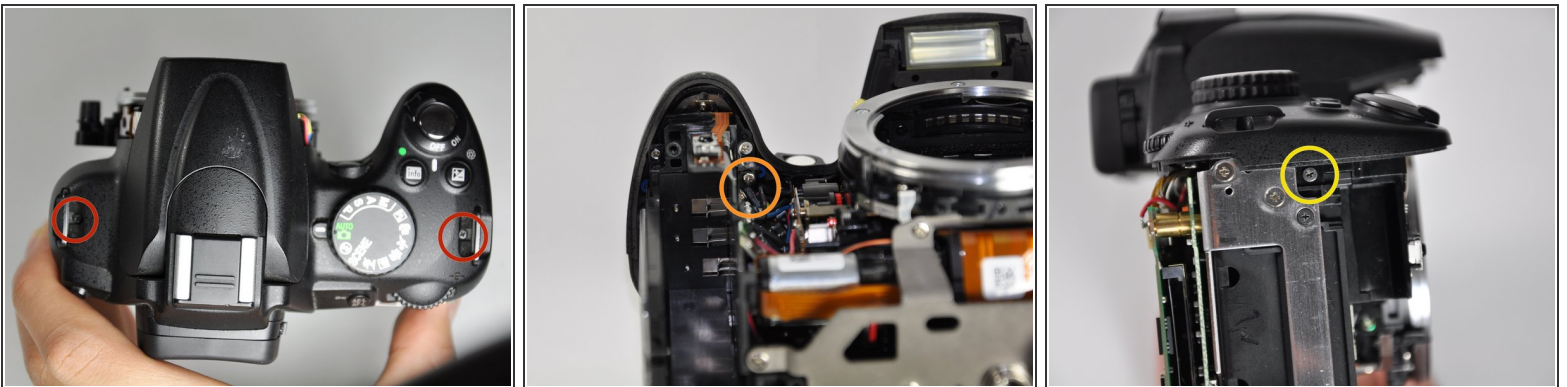
- The front panel is next. Six screws hold it on.
- Start by removing four Phillips #00 screws in the top part of the panel:
  - Two black 2.5x4.5mm screws above the lens mount.
  - Two black 2.5x4.5mm screws under the flash (they are the same type of screw as in the above step).

## Step 5



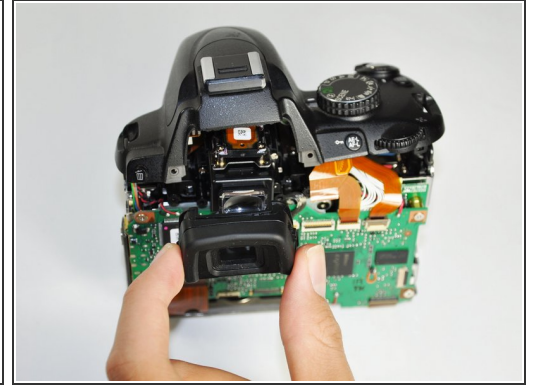
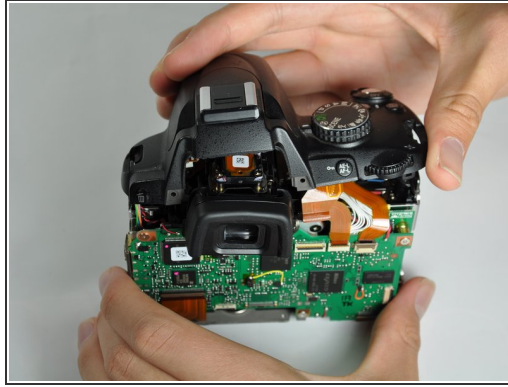
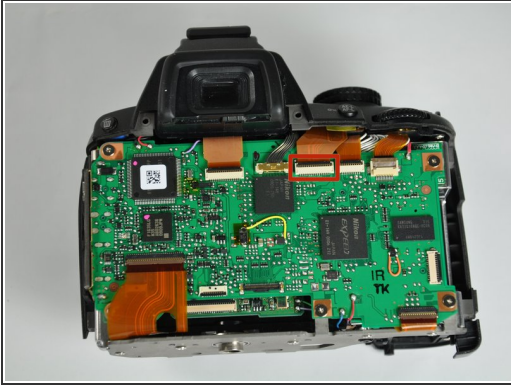
- Remove two more Phillips #00 screws from the bottom of the camera:
  - One silver 3x4.5mm silver screw, by the right edge.
  - One silver 3x4.5mm screw in the battery compartment.
- Pull the front panel up and off.

## Step 6



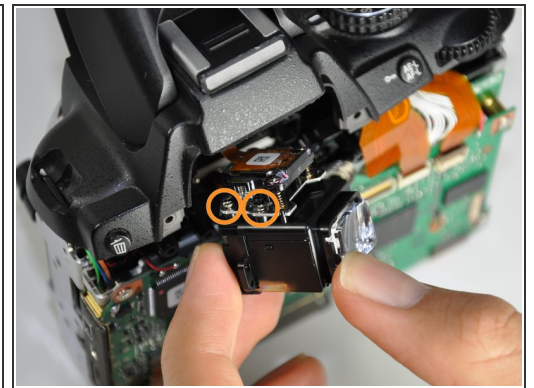
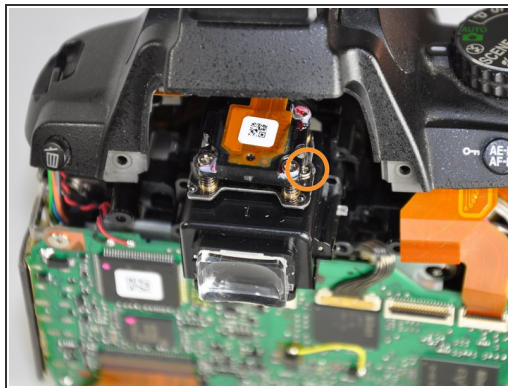
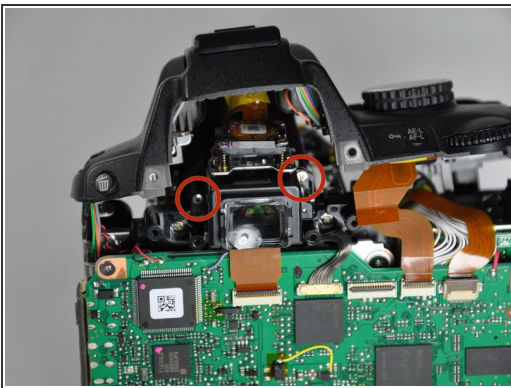
- Next is the top panel. It is held on by four Phillips #00 screws:
  - Two 3x3.5mm black screws, one by each of the strap mounts.
  - One silver 3x5mm screw on the underside of the panel, about where the "Info" button is. It is the lower of the two in this area, and farther back in the camera.
  - One 3x3mm black screw in the side, under the plus/minus button.

## Step 7



- Disconnect the third ribbon cable from the right at the top of the back logic board.
- Lift the top panel up.
  - ⓘ There are still a number of cables connected to this panel. It cannot be removed completely at this point.
- Remove the viewfinder hood by pulling outward.

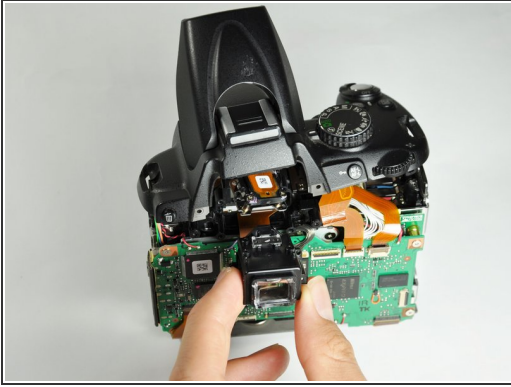
## Step 8



- Remove the two Phillips #00 3x5.5mm silver screws securing the viewfinder assembly.
- Remove the three Phillips #00 2.5x3.5mm screws holding the electronics board onto the viewfinder assembly.
  - These are the lower screws in the metal plate, not the upper ones with the springs on them.



## Step 9



- Remove the viewfinder window.
- During reinstallation, there is a small tab on the side of the window assembly that needs to be reconnected (window removed for clarity).
- ☞ After reinstalling the window assembly, catch the tab in the metal hook on the viewfinder hood (see third image). Then seat the two plastic pins on the bottom of the hood.

To reassemble your device, follow these instructions in reverse order.