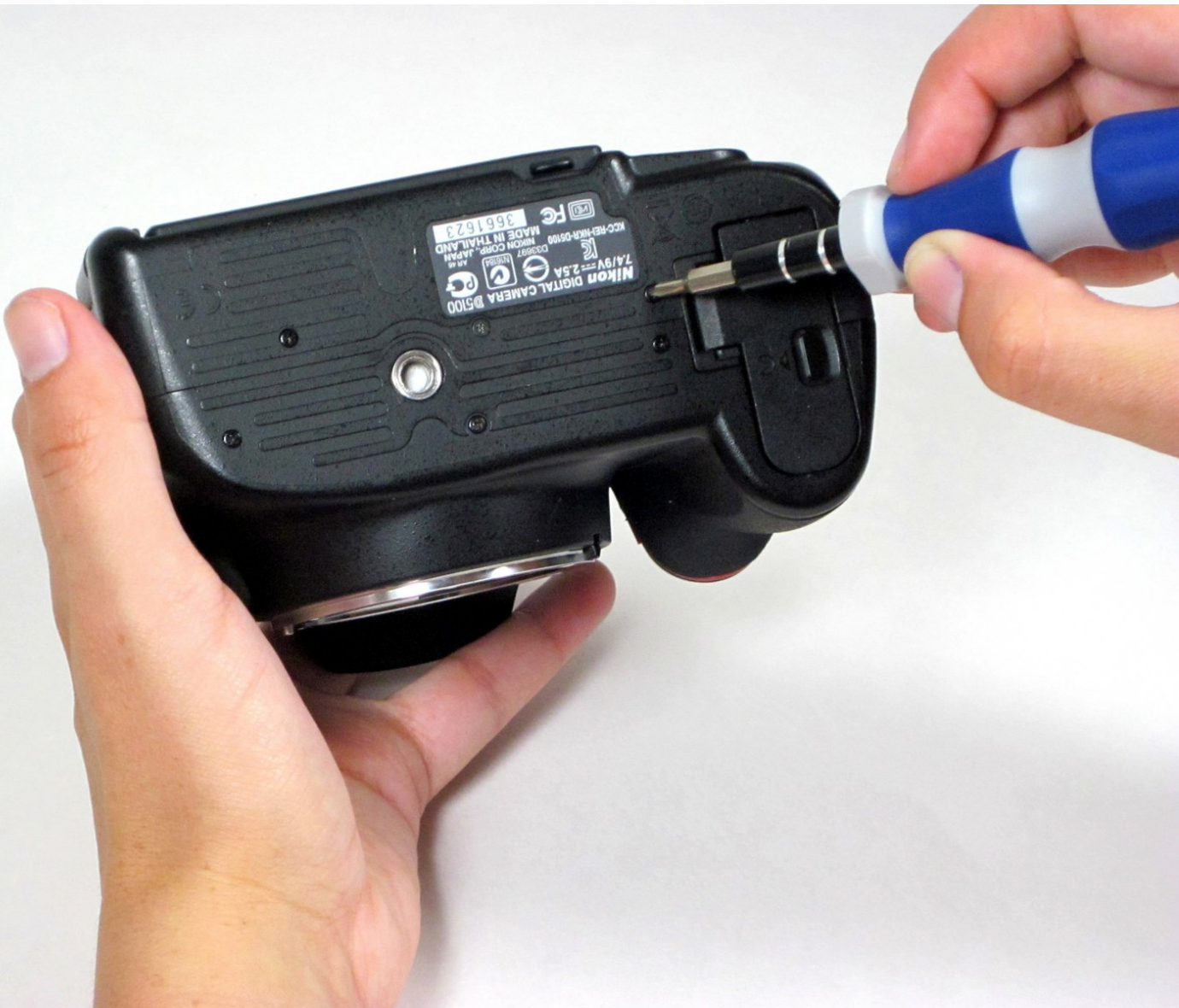




Nikon D5100 Rear Panel Replacement

Guide to replace the rear panel of the camera.

Written By: Liz



INTRODUCTION

The rear panel protects the motherboard and other components inside the camera and houses controls like buttons and dials. This guide will teach you how to remove and replace the rear panel.



TOOLS:

- [Phillips #00 Screwdriver](#) (1)
 - [Spudger](#) (1)
-

Step 1 — Rear Panel



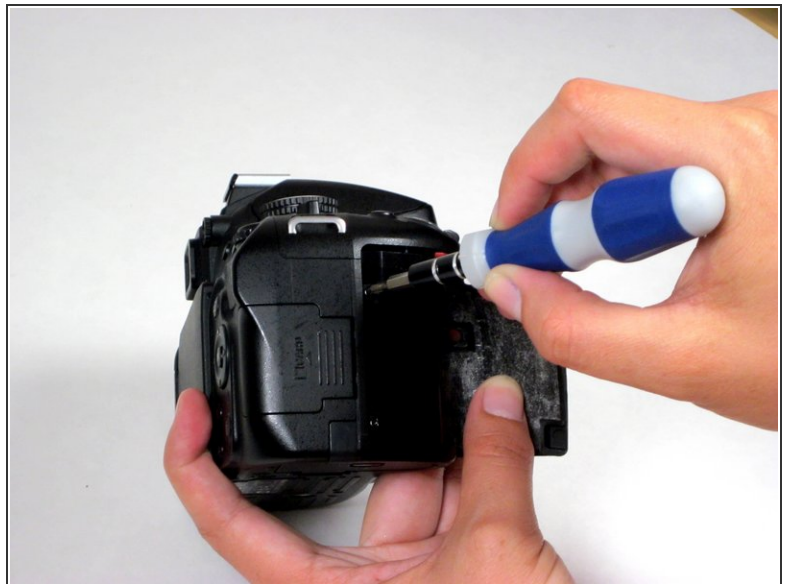
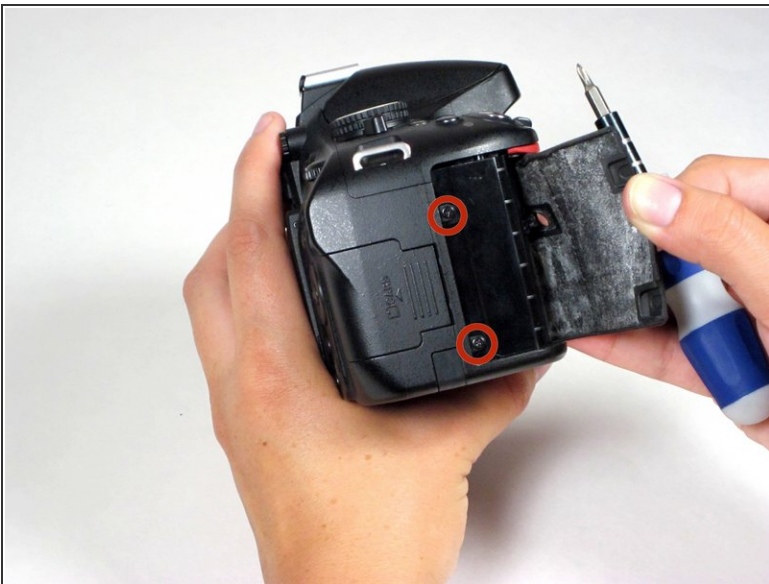
- Using a Phillips #00 screwdriver, remove 5 exposed screws from around the perimeter of the camera.
- ✦ Remember that we're removing the rear panel, so for this step, only remove screws on the appropriate side of the seam separating the rear and front panels.
- ⓘ The D5100 is held together by a large number of screws, which come in several sizes. Make sure to keep your screws organized so that you don't lose or misplace them!

Step 2



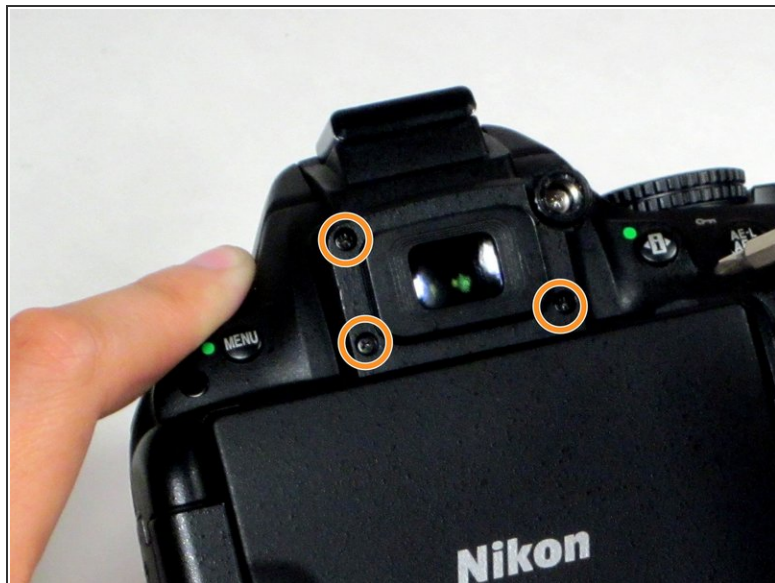
- Using a fingernail, gently peel back the black rubber thumb grip, which is attached to the chassis with a strong adhesive, and remove the concealed screw underneath it.

Step 3



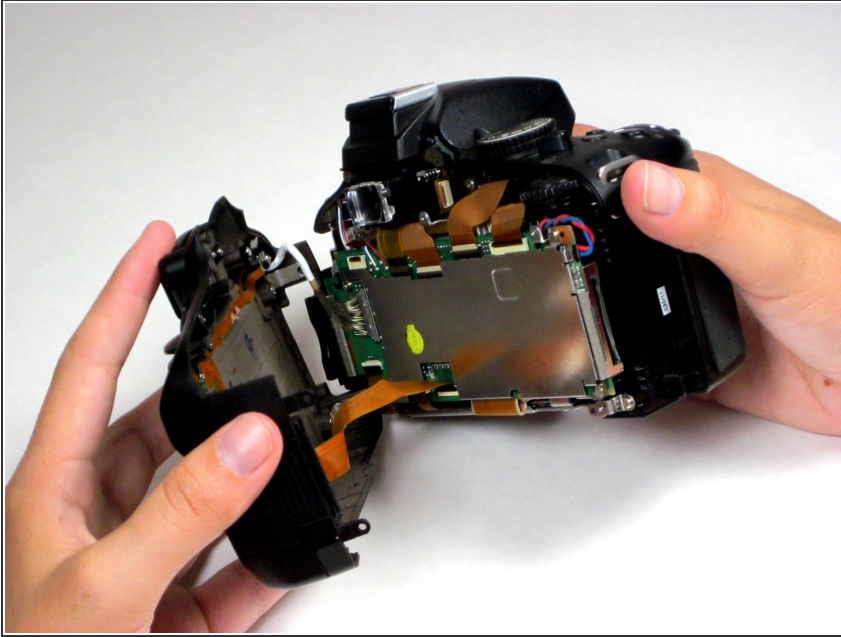
- Carefully peel back the black rubber hand grip, which is attached to the chassis with a strong adhesive, and remove the two screws concealed underneath.

Step 4



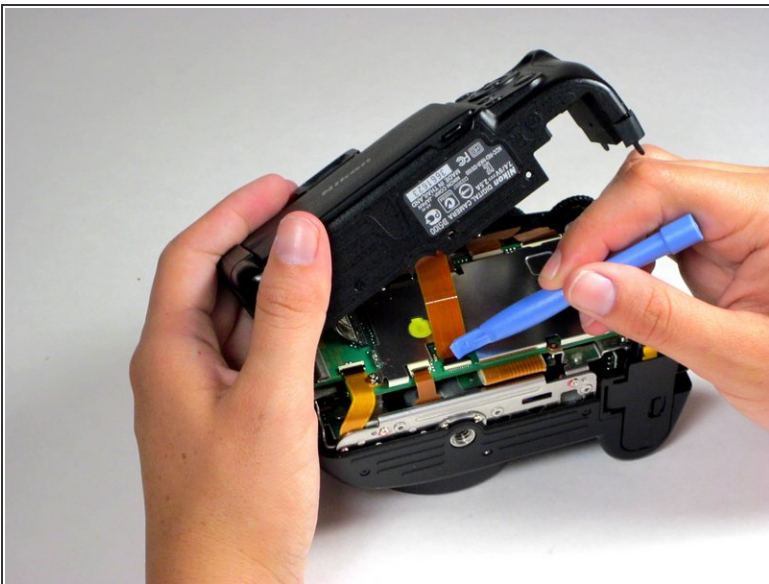
- Using a spudger, pry off the diopter adjustment dial cover and remove the screw underneath.
 - ⚠ Be sure to remove the very thin cover from the dial, and not the dial itself.
 - ⓘ The dial cover is not shown in this picture.
- Next, remove the three Phillips screws around the viewfinder.

Step 5



- Slowly and carefully begin to separate the rear panel from the camera body.
- ⓘ You will notice some resistance, as the two pieces of the camera fit together tightly. Take care not to damage the chassis, but use a firm grip to pull the two halves apart.

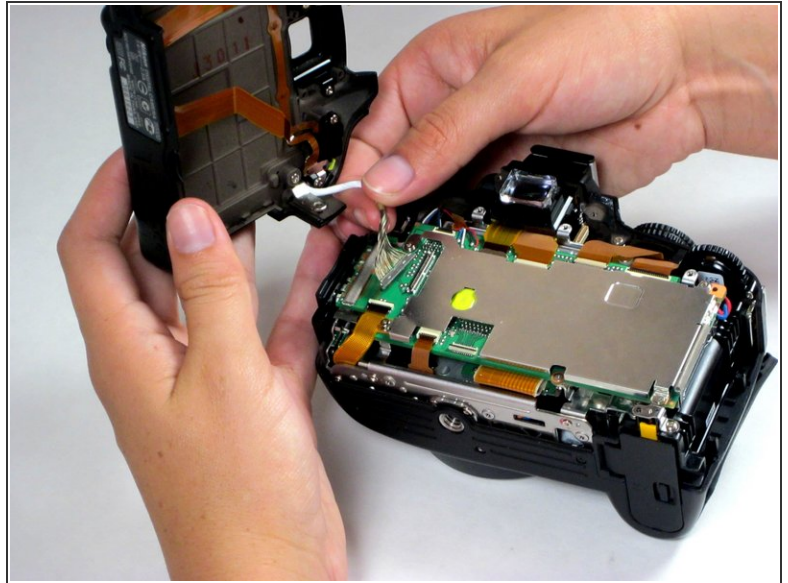
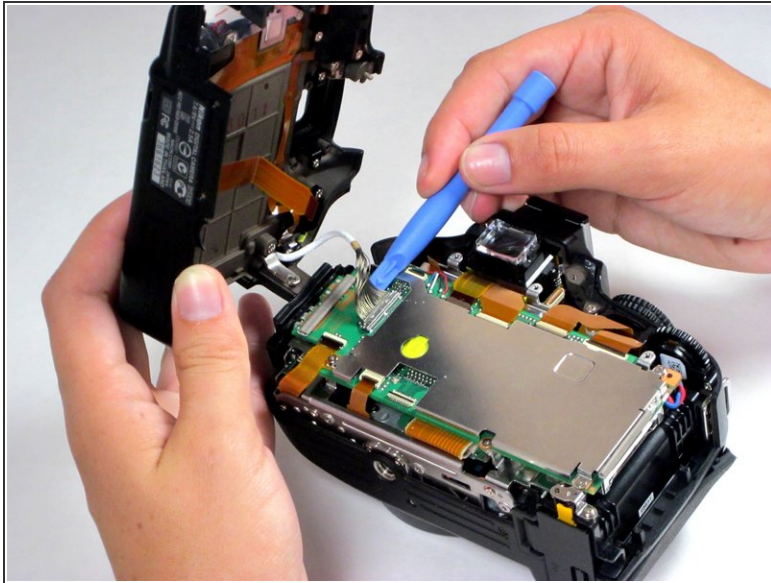
Step 6



- Remove the dark orange ribbon cable attaching the rear panel to the motherboard by flipping the black plastic clasp up, away from the motherboard, and pulling the cable out of its white casing in the direction of the cable.

✦ Using the flat edge of a spudger can help with this delicate task.

Step 7



- Remove the silver 16-pin cable by pulling gently upwards, away from the inside of the camera, until it separates from its port.
- At this point, the rear panel is fully separated from the main body of the camera.

To reassemble your device, follow these instructions in reverse order.