



Nikon D70 LCD Assembly Replacement

Written By: Walter Galan



INTRODUCTION

Use this guide to replace a broken rear LCD.



TOOLS:

- [Phillips #00 Screwdriver](#) (1)
 - [Tweezers](#) (1)
-

Step 1 — Battery



- Use your finger tip to pull the battery release tab toward the center of the D70.
- Open the battery door and rotate it away from the bottom cover.

Step 2



- Pull the battery out of the D70.
- ⓘ It may be necessary to wiggle the battery while pulling to free it from its pocket in the case.

Step 3 — Bottom Cover



- Remove the following eight screws securing the bottom cover to the D70:
 - Six 5.8 mm Phillips screws
 - One 10.7 mm Phillips screws
 - One 8.2 mm Phillips screws

Step 4



- Carefully pull the bottom cover to separate it from the body of the D70.
- Remove the bottom cover from the D70.

Step 5 — Rear Cover Assembly



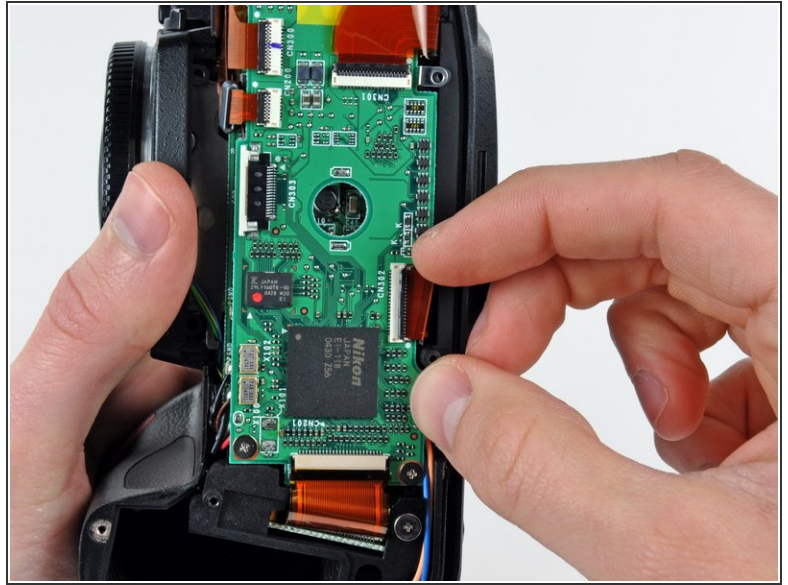
- Remove the two 4.8 mm Phillips screws securing the battery side of the rear cover to the D70.

Step 6



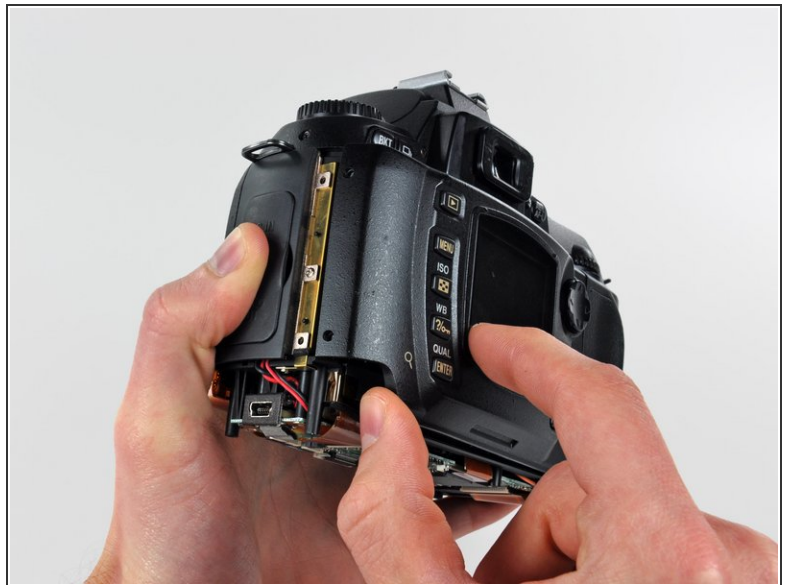
- Remove the two 4.8 mm Phillips screws securing the port side of the rear cover to the D70.

Step 7



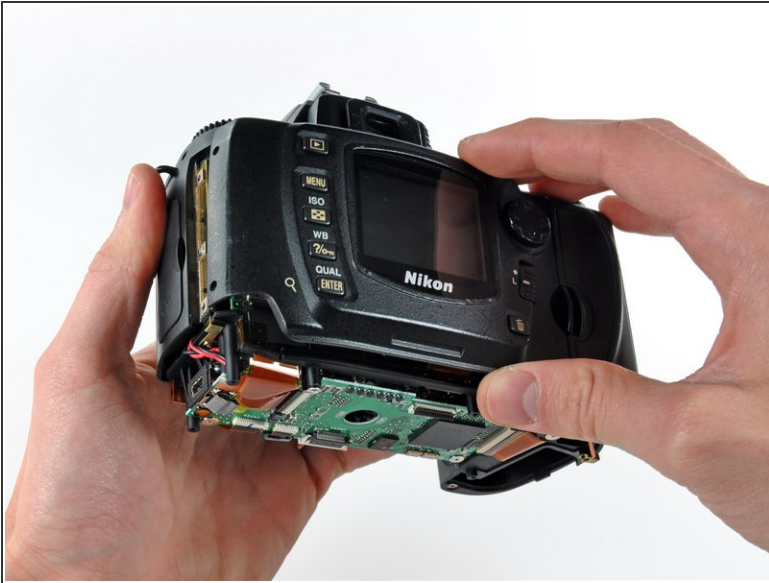
- Use your fingernail to flip up the ZIF locking flap on the LCD ribbon cable socket.
- ⚠ Be sure you are opening the locking tab, not pulling against the socket mounted to the board.
- Pull the LCD board ribbon cable out of its socket.

Step 8



- Carefully pull the sides of the rear cover away from the body of the D70.

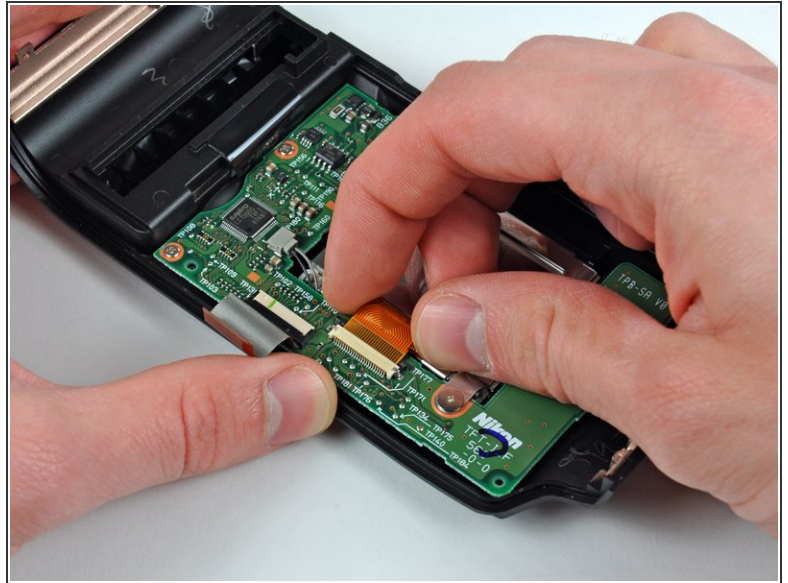
Step 9



- Pull the rear cover off the body of the D70, minding the LCD board ribbon cable that may get caught.

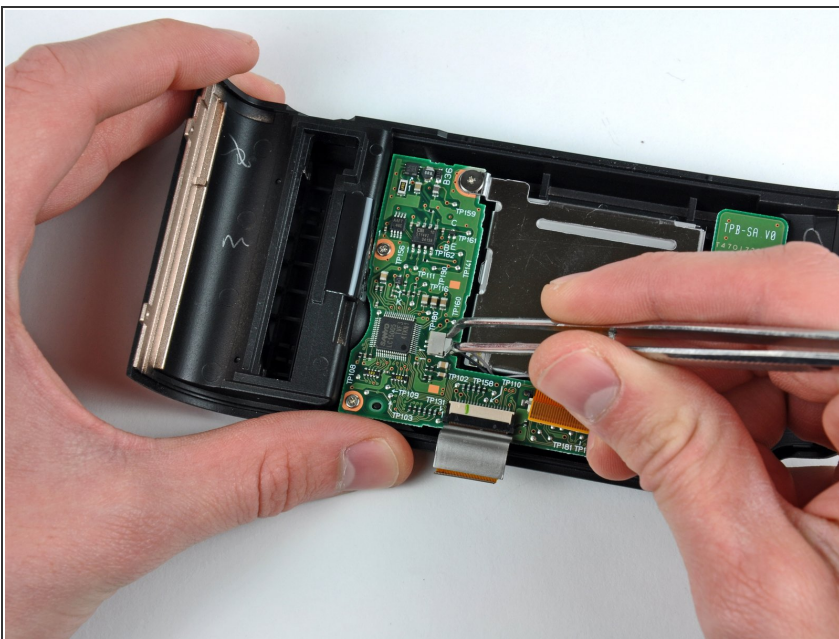
⚠ At this point, the capacitor is visible and its exposed contacts are boxed in red in the second picture. Even though they are recessed, be careful not to touch the contacts to avoid shocking yourself.

Step 10 — LCD Assembly



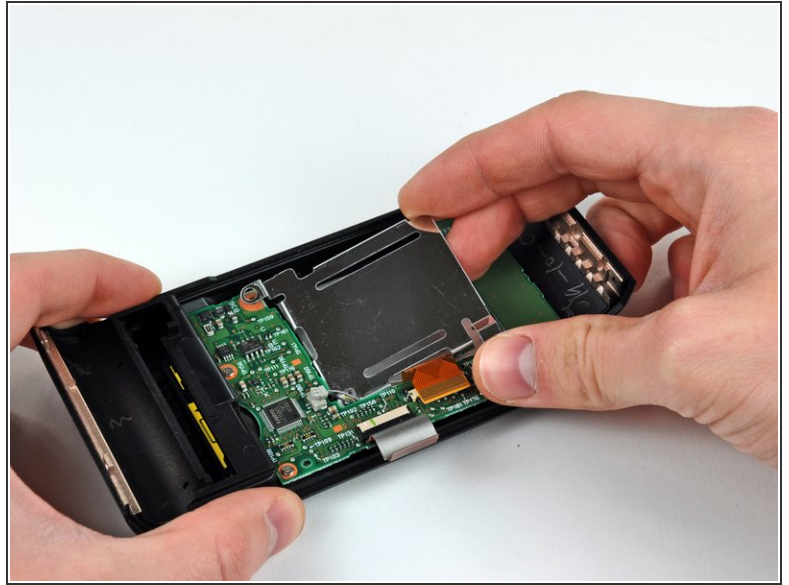
- Use your thumbnails to push the ZIF cable lock toward the LCD.
- ⚠ Do not completely remove the ZIF cable lock. It should move about 1 mm and stop. Be sure you are pushing against the lock, not the socket.
- Pull the LCD ribbon cable out of its socket.

Step 11



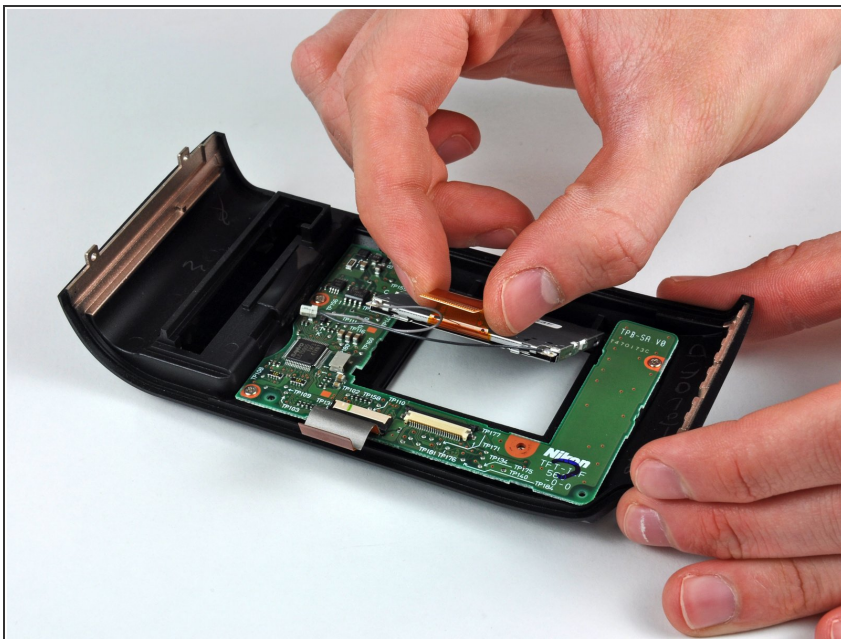
- Use a pair of tweezers to pull the LCD backlight connector away from its socket.
- ⓘ It may help to wiggle the connector as you pull it out of its socket.

Step 12



- Remove the two 4.8 mm Phillips screws securing the LCD bracket to the rear cover.
- Lift the LCD bracket out of the rear cover.

Step 13



- Remove the LCD assembly from the rear cover.
- ☑ Be sure both the face of the LCD and the inner face of the clear LCD cover are perfectly clean before reassembly, as any dust or fingerprints trapped inside will be annoyingly visible when the device is turned on.

To reassemble your device, follow these instructions in reverse order.