



Nikon D7100 Dial mode button Replacement

The purpose of this guide is to walk through how to replace the dial mode button on the Nikon D7100 DSLR Camera.

Written By: Wesley Eveld





TOOLS:

- [Phillips #0 Screwdriver](#) (1)
-

Step 1 — LCD Screen



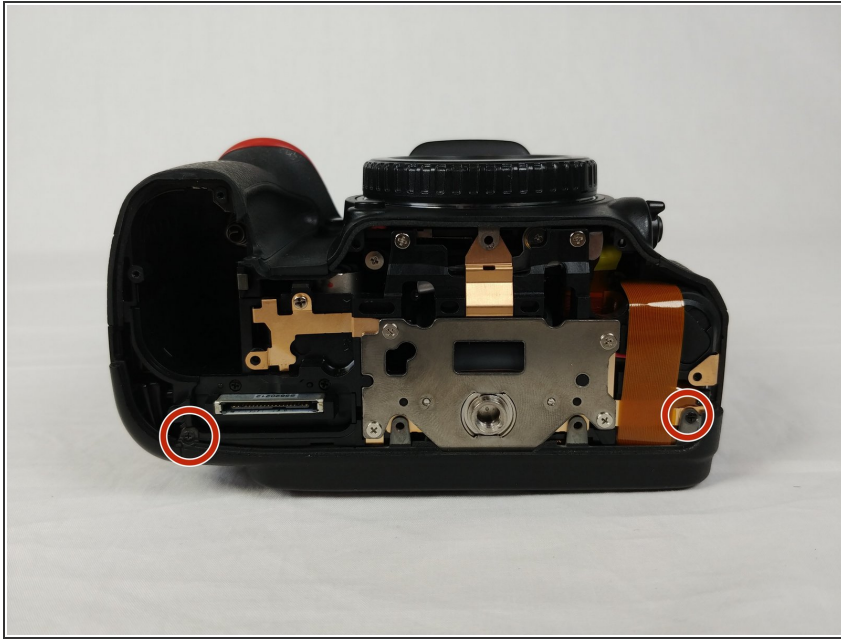
- Remove the five screws on the bottom of the camera with a JIS #000 head screwdriver.

Step 2



- Remove the 3 screws under the battery flap and remove the bottom cover.

Step 3



- Remove the 2 screws inside the camera on the back corners.

Step 4



- Open the HDMI flap and remove the 2 screws.

Step 5



- Remove the screw next to the camera strap loop.

Step 6



- Remove the 2 screws on each side of the view finder.

Step 7



- Remove the 2 screws above and below the SD card flap.

Step 8



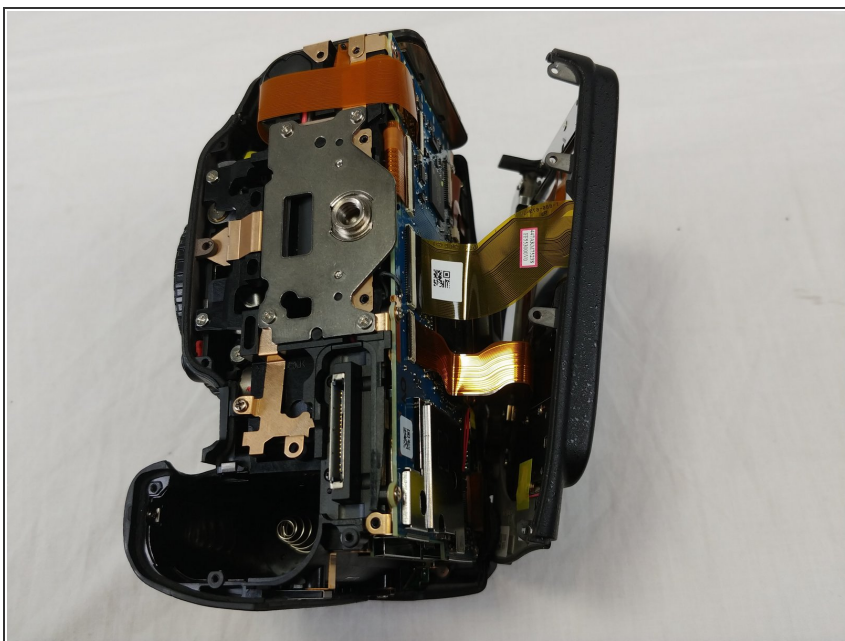
- Peel off the adhesive leather screw cover and remove the 2 screws under it.

Step 9



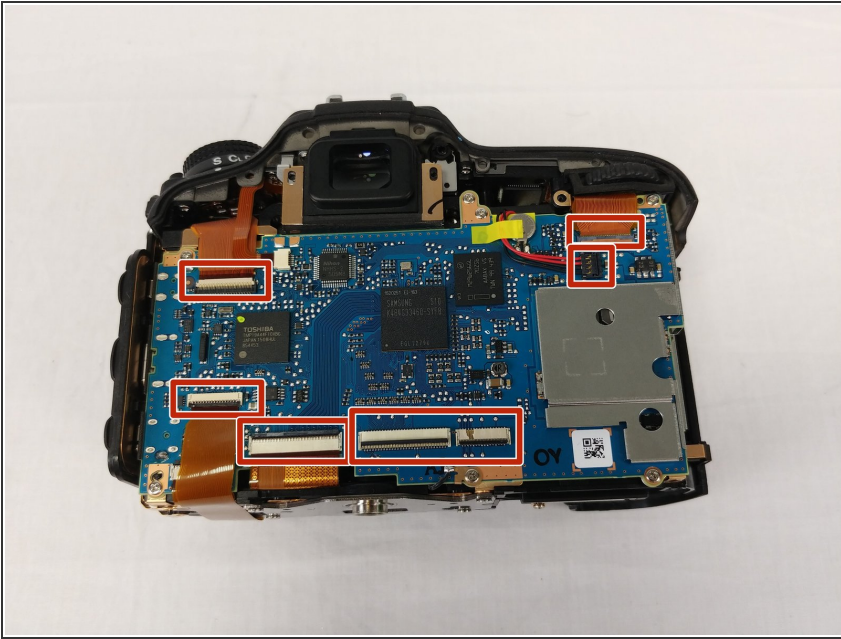
- Remove the Diopter adjustment control sticker and remove the screw under it.

Step 10



- Separate the back panel of the camera from the actual camera.
- ⚠ Be careful not to tear any of the ribbon cables.

Step 11



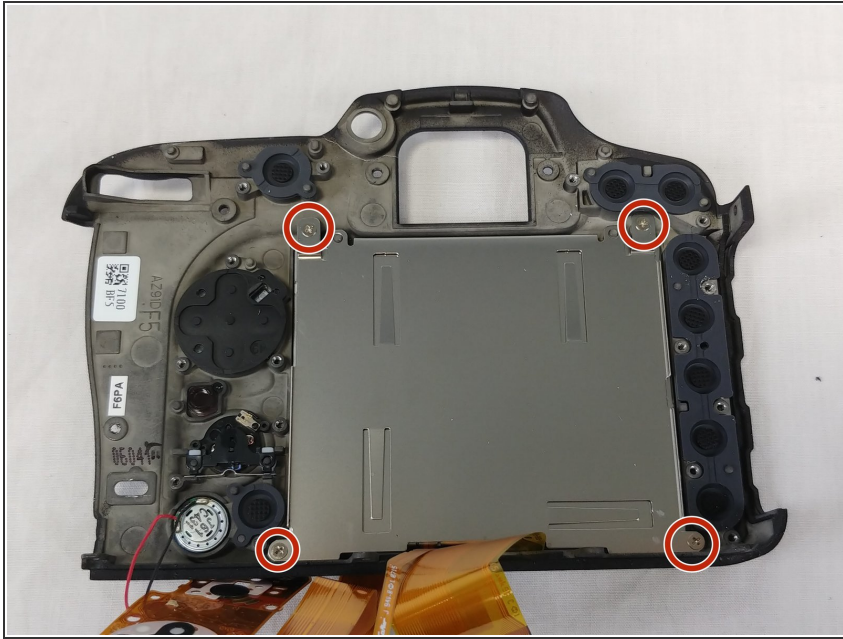
- Disconnect the LCD ribbon cables and power cable from the motherboard.

Step 12



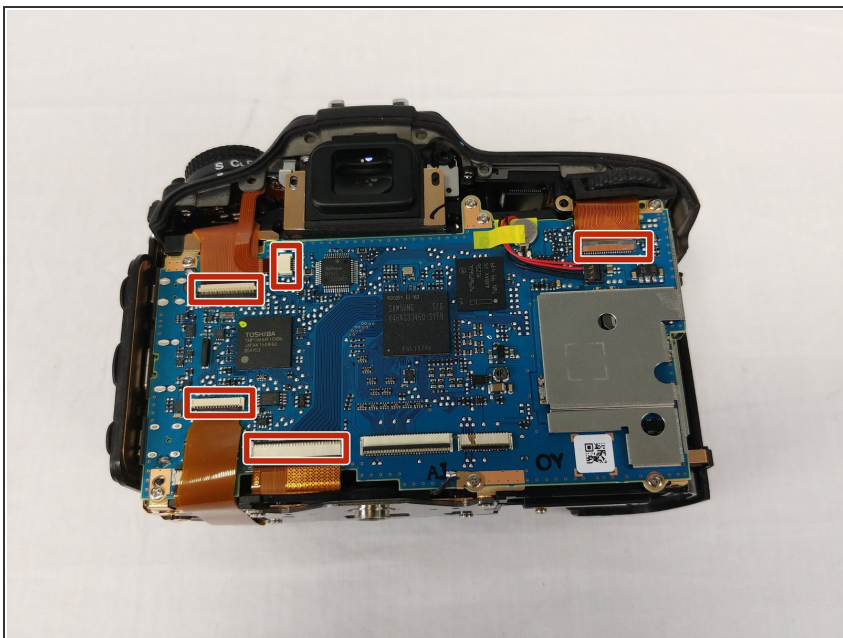
- Unscrew all 16 screws around the back plate of the camera.

Step 13



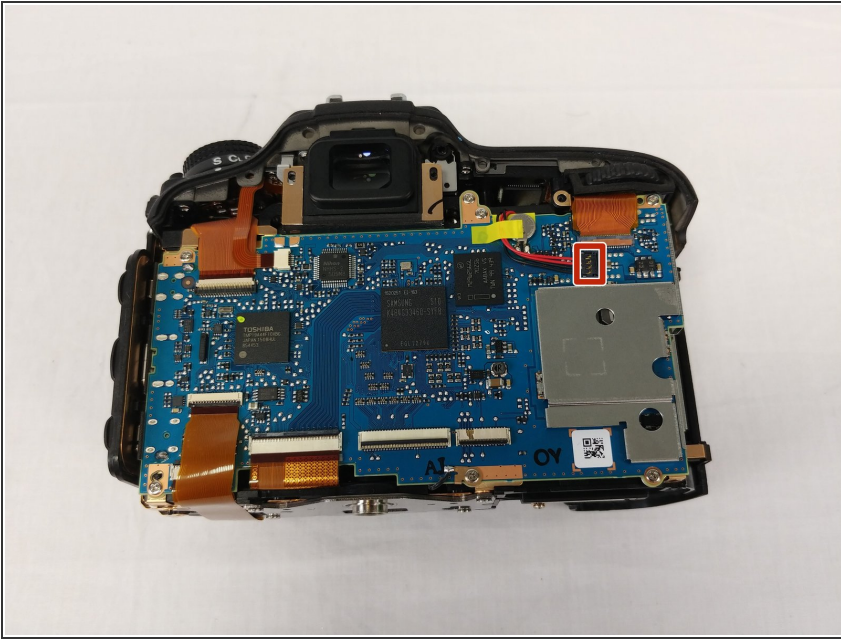
- Then unscrew the remaining screws holding the back plate to the LCD.
- Then simply remove the plate with the LCD.

Step 14 — Motherboard



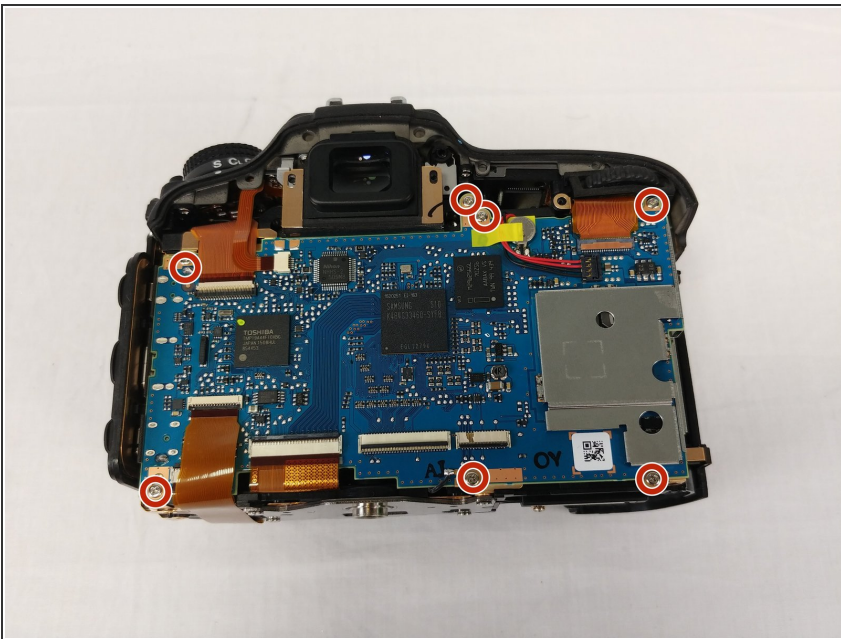
- Undo the 5 ribbon cable connectors by flipping the latches up with a plastic spudger.

Step 15



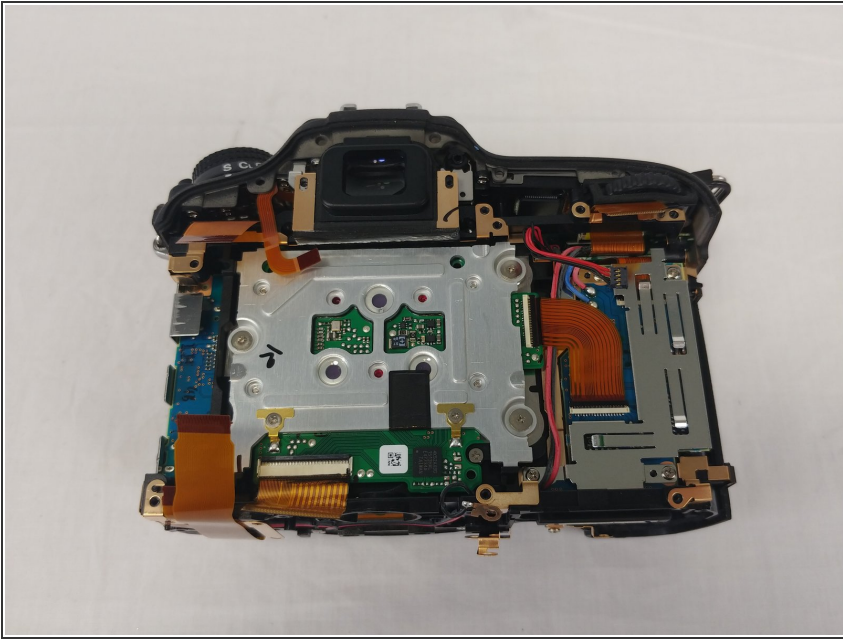
- Remove the black 4 pin connector by pulling it out of the connector.

Step 16



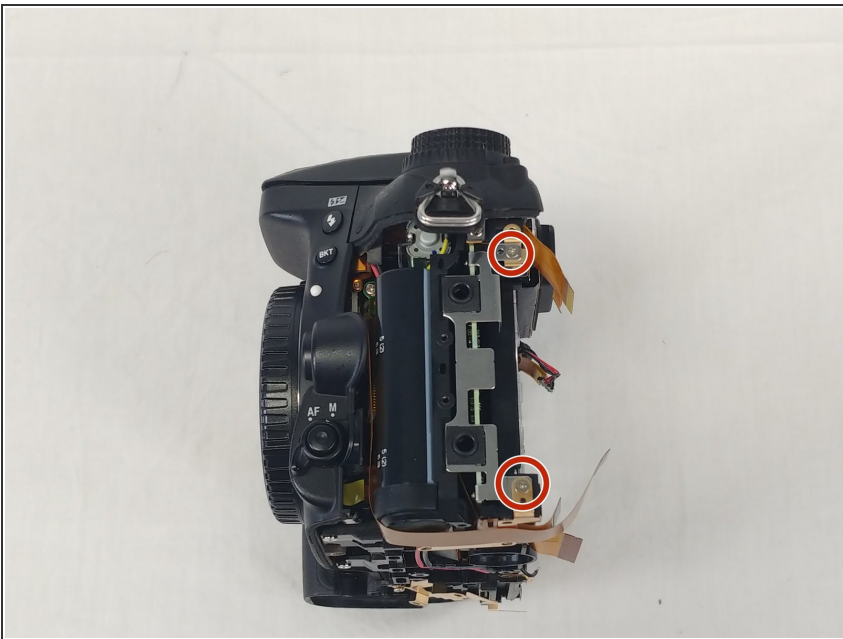
- Remove the 7 screws holding the motherboard in place.

Step 17



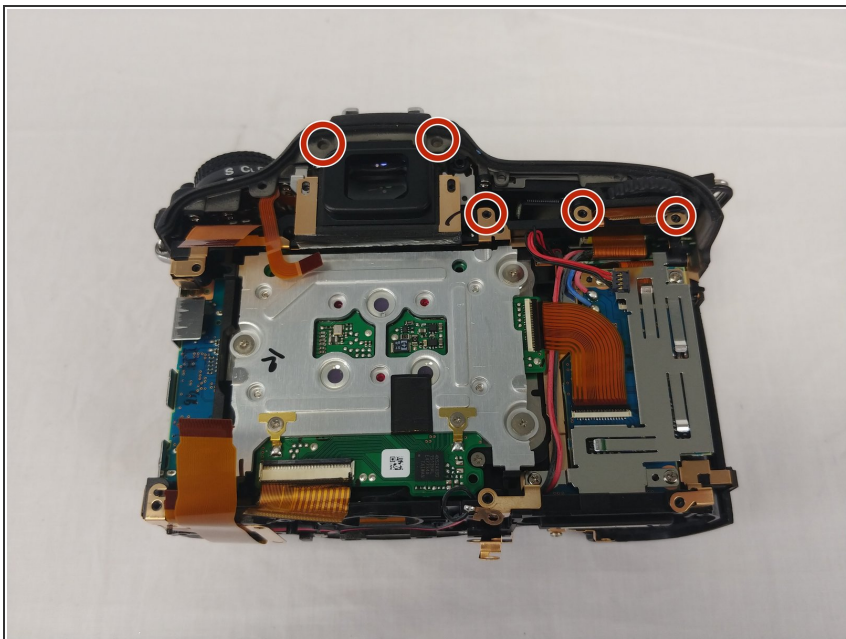
- This is what you should see after removing the motherboard.

Step 18 — Headphone and Microphone Module



- After following the guide to remove the back LCD screen from the motherboard, remove the 2 marked screws.

Step 19 — Dial Mode Button



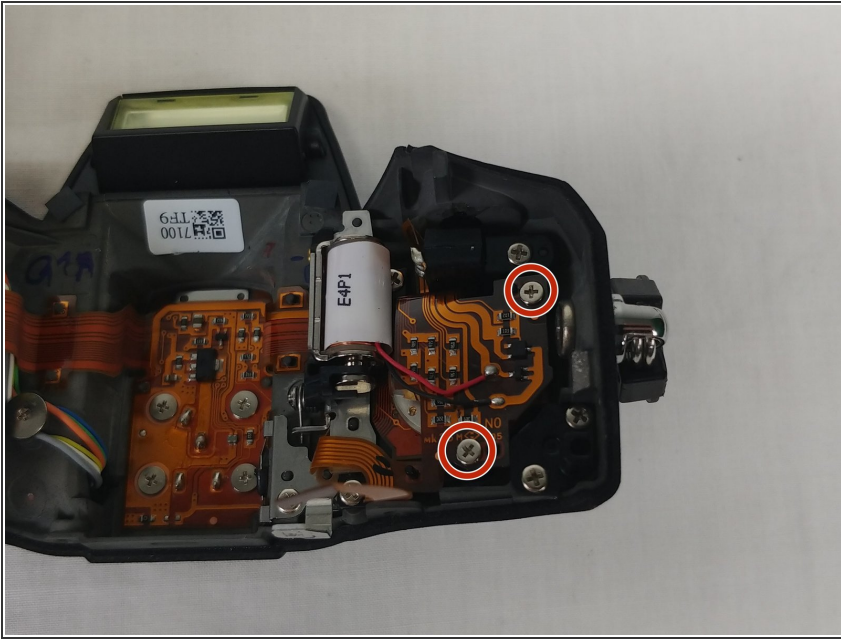
- Remove these 5 screws along the top of camera body.

Step 20



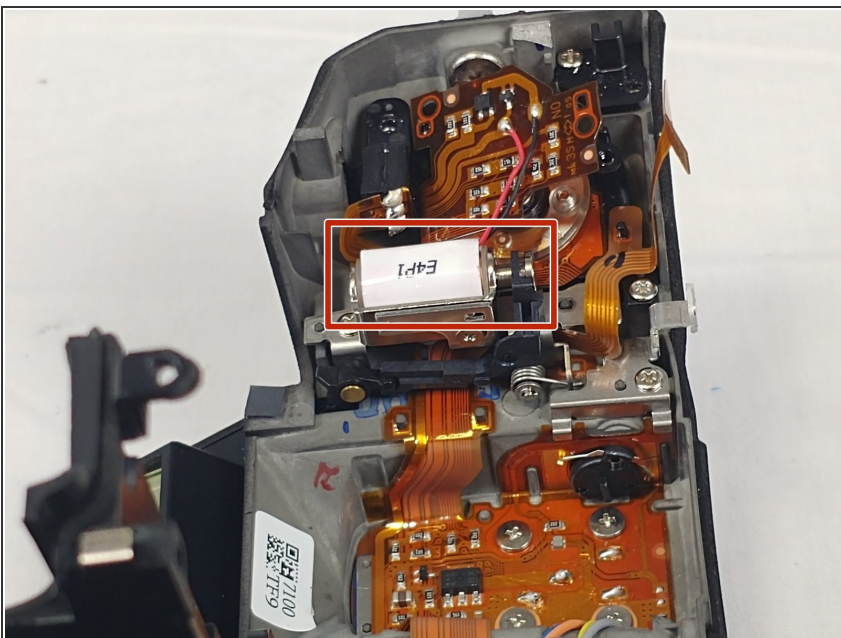
- Remove these 2 screws on the top of the camera and pull the top screen, flash, and dial-mode button from the main body of the camera.

Step 21



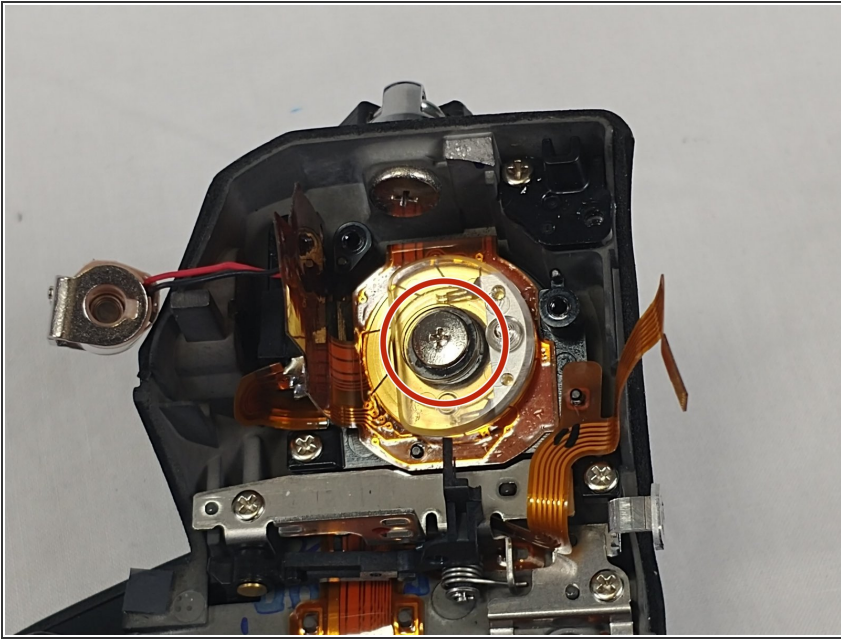
- Remove the screws holding the dial-mode PCB board down.

Step 22



- Remove the potentiometer and PCB off together.

Step 23



- Remove the large screw in the middle of the dial-mode button. This allows you to replace it.

To reassemble your device, follow these instructions in reverse order.