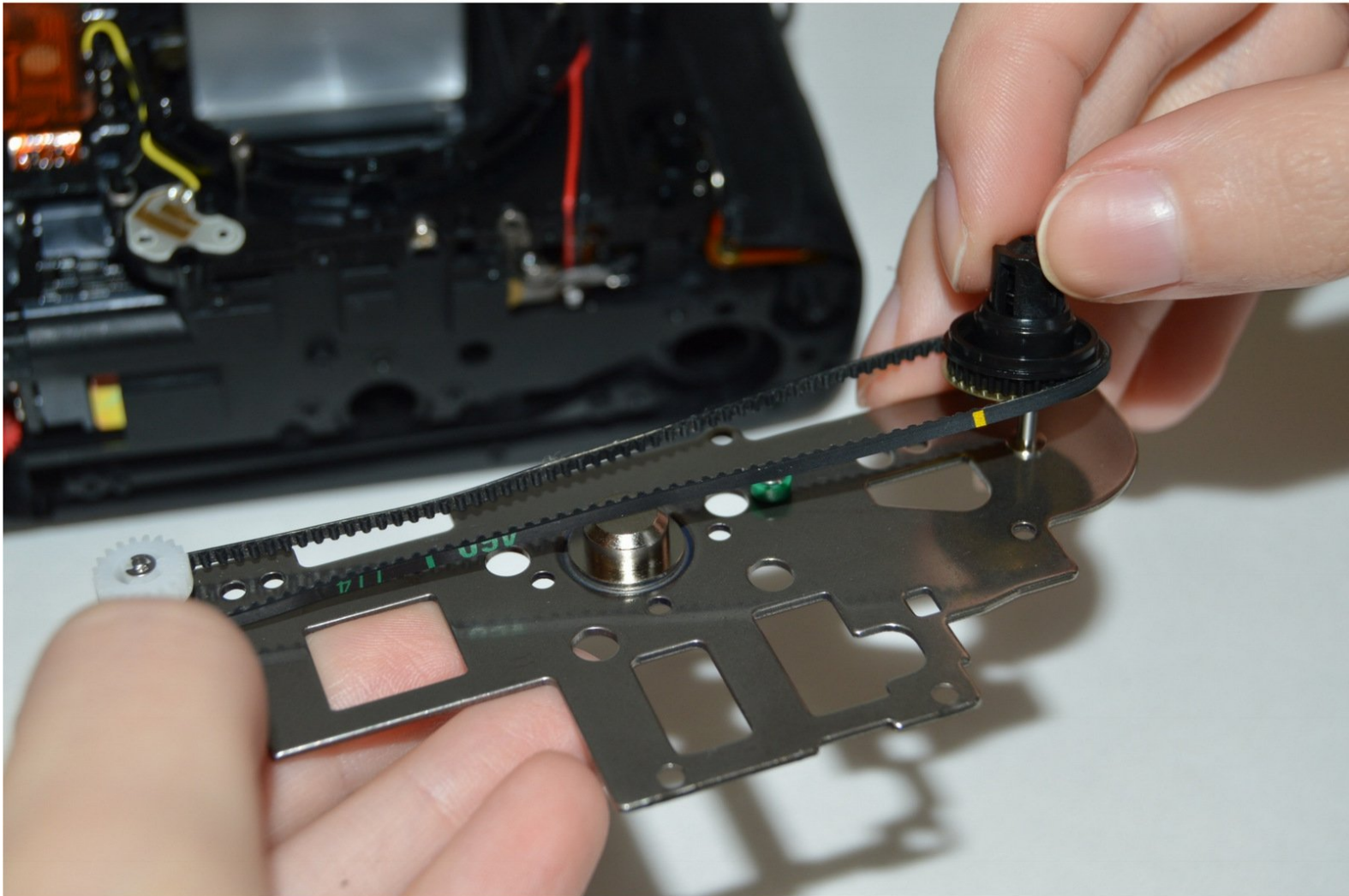




# Nikon N80 Gear Belt for Film Winding Replacement

This is a guide for replacing the gear film belt for film winding in your Nikon N80 Camera.

Written By: Maegan Vilorio



---

## INTRODUCTION

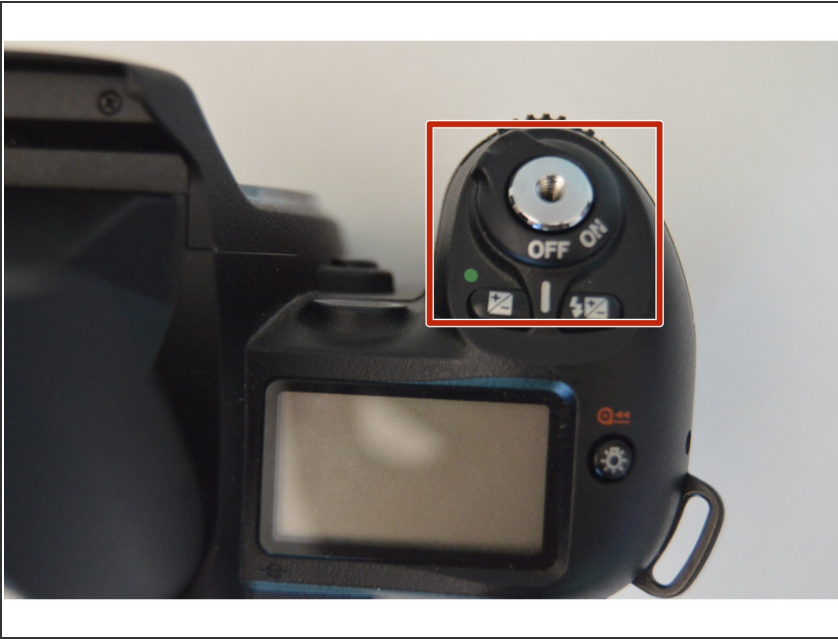
Is the gear belt for film winding in your camera broken or has a tear? Try your hand at replacing it to make your camera work again. This guide will explain how to replace the gear belt in a Nikon N80/F80 Camera.

---

### TOOLS:

- [Phillips #00 Screwdriver](#) (1)
-

## Step 1 — Gear Belt for Film Winding



- Make sure the On/Off switch is in the Off position.

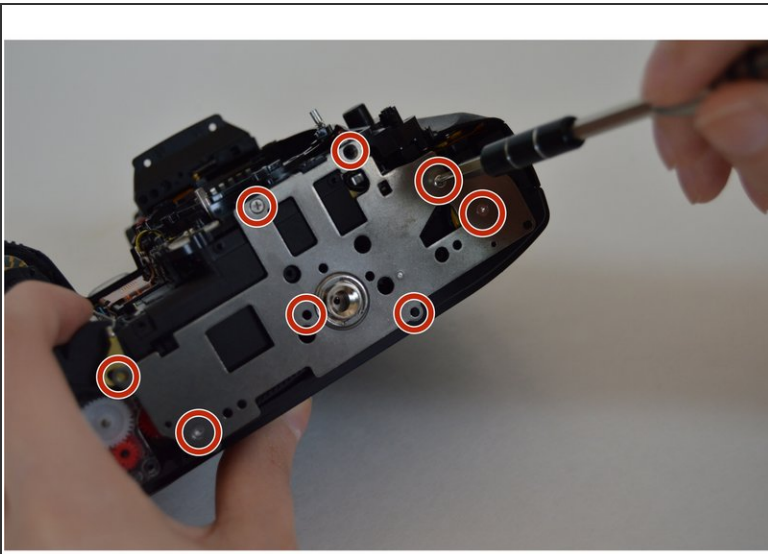
## Step 2



- Rotate the camera so the bottom plate is accessible.
- Remove the seven 4.8mm screws on the bottom plate of the camera using a PH00 Phillips screwdriver.
- Remove the bottom plate.

This document was generated on 2019-09-17 04:29:51 AM (MST).

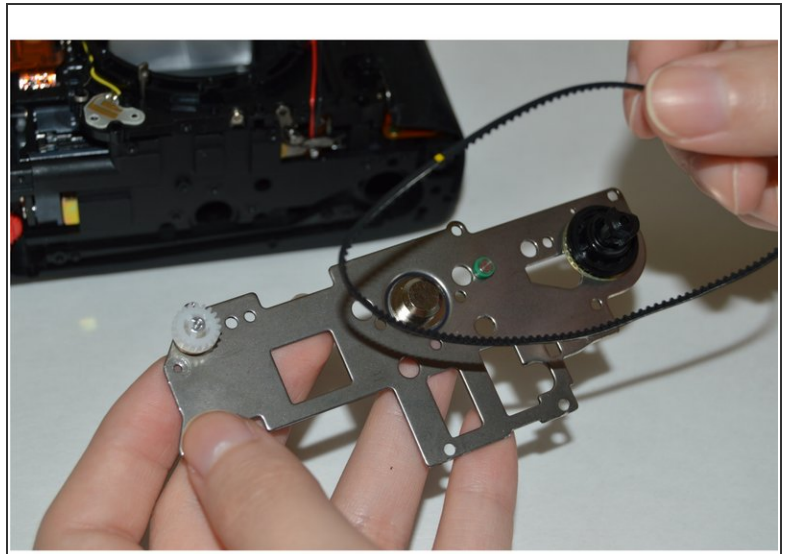
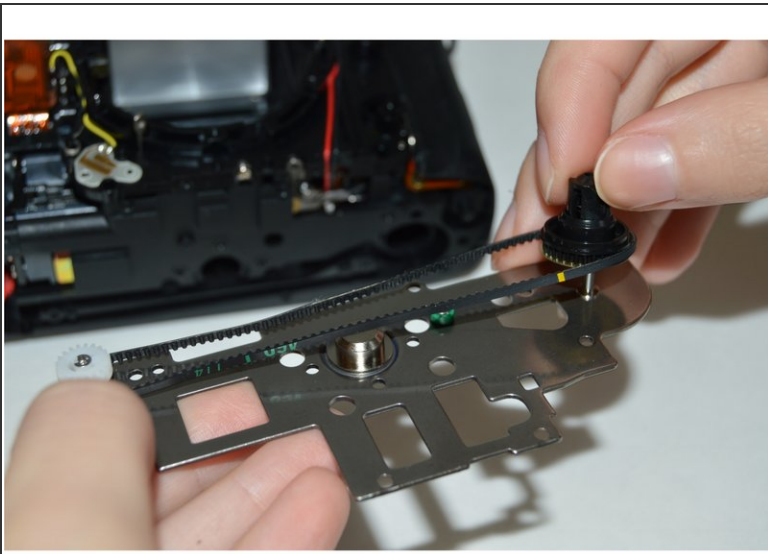
### Step 3



- Remove the eight 4.8mm screws holding on the metal plate.
- Remove the metal plate.



## Step 4



- Gently remove the black, rubber gear belt.
- Discard the old belt responsibly.
- Place new belt on.

To reassemble your device, follow these instructions in reverse order.