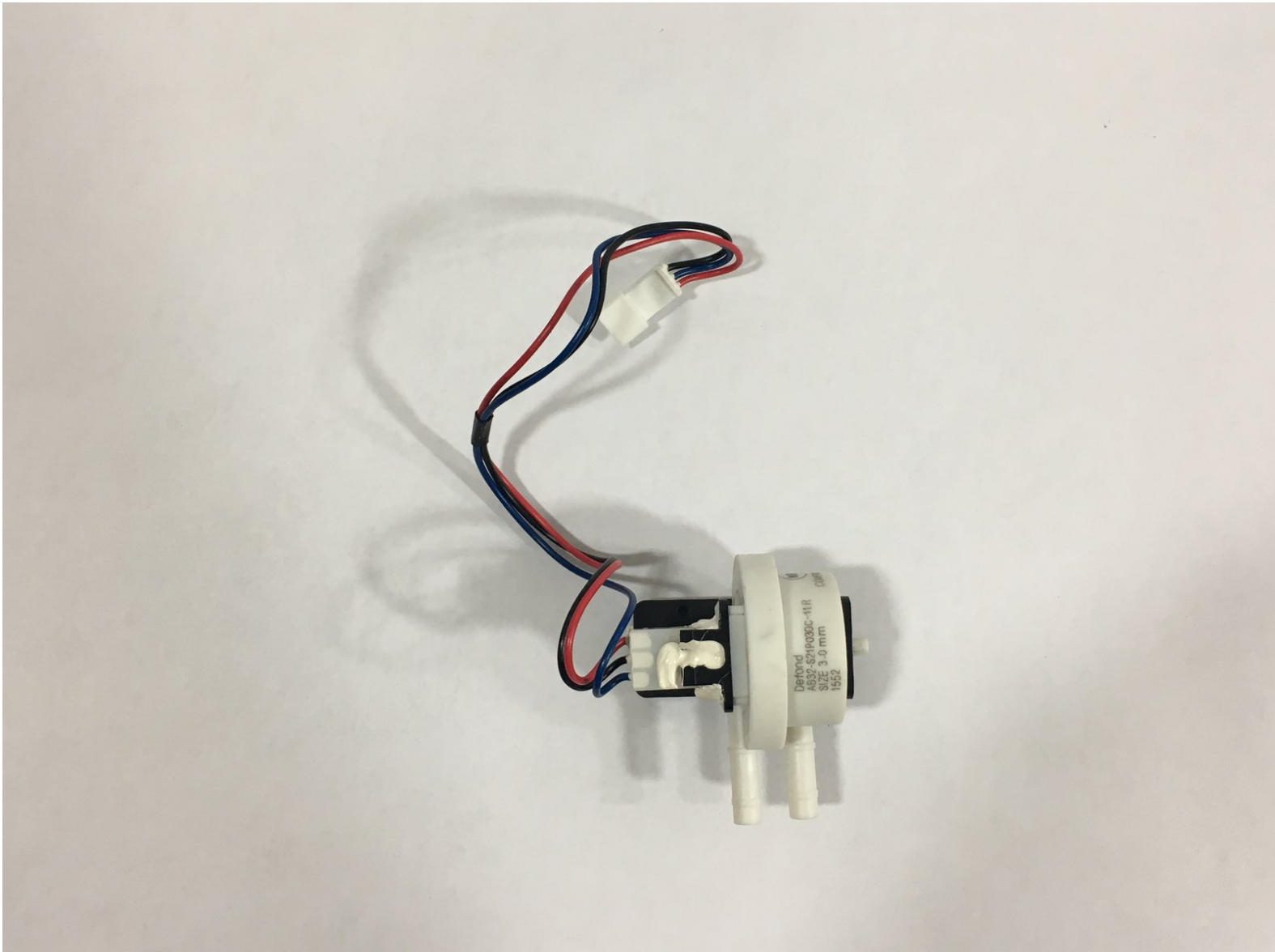




# Ninja Coffee Bar CF086 Water Pump Replacement

A guide detailing the replacement procedure for the Ninja Coffee Bar CF086 Water Pump.

Written By: David Ton



---

## INTRODUCTION

The water pump facilitates the motion of water from the reservoir to the drip area. This guide shows how to replace it.

---

### TOOLS:

- [T10 Torx Screwdriver](#) (1)
  - [Phillips #0 Screwdriver](#) (1)
  - [Portable Soldering Iron](#) (1)
-

## Step 1 — Water Heating Element



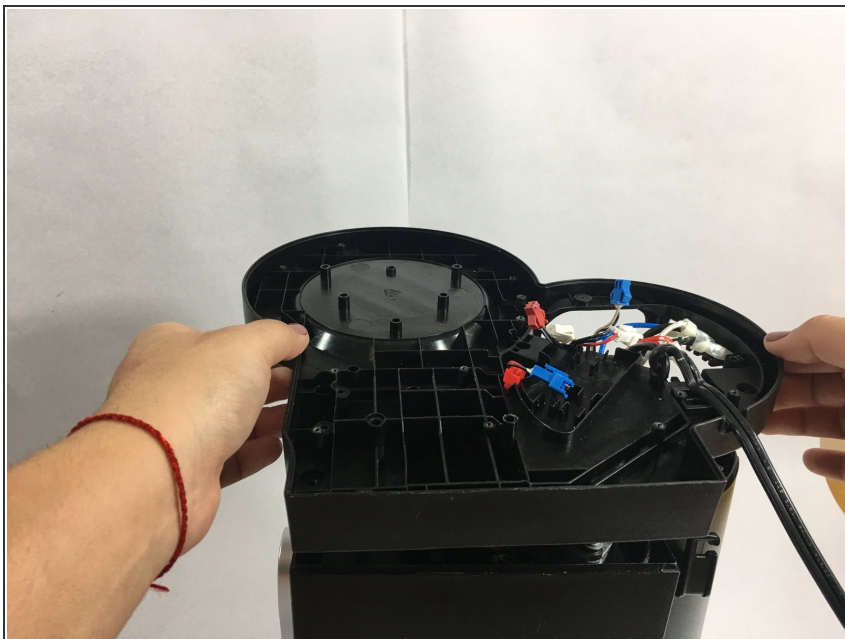
- ❗ Make sure the Ninja Coffee Bar is unplugged and that you have a dry, clean workspace for this task.
- Remove the carafe and water reservoir and set them aside.

## Step 2



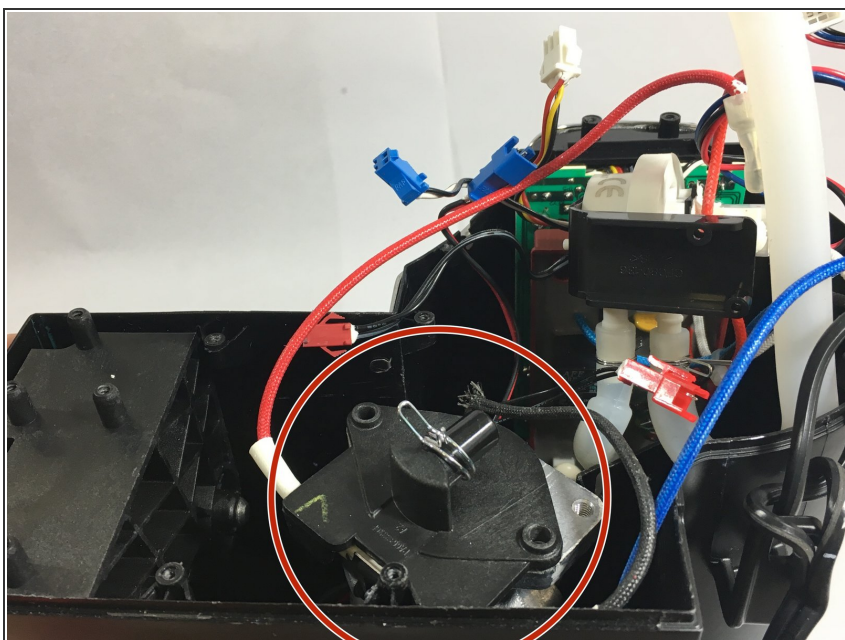
- Unscrew the T-10 screws from the bottom cover of the machine, and remove that bottom cover.

### Step 3



- Unscrew and remove the heating plate layer. This will expose the internal workings of the machine.

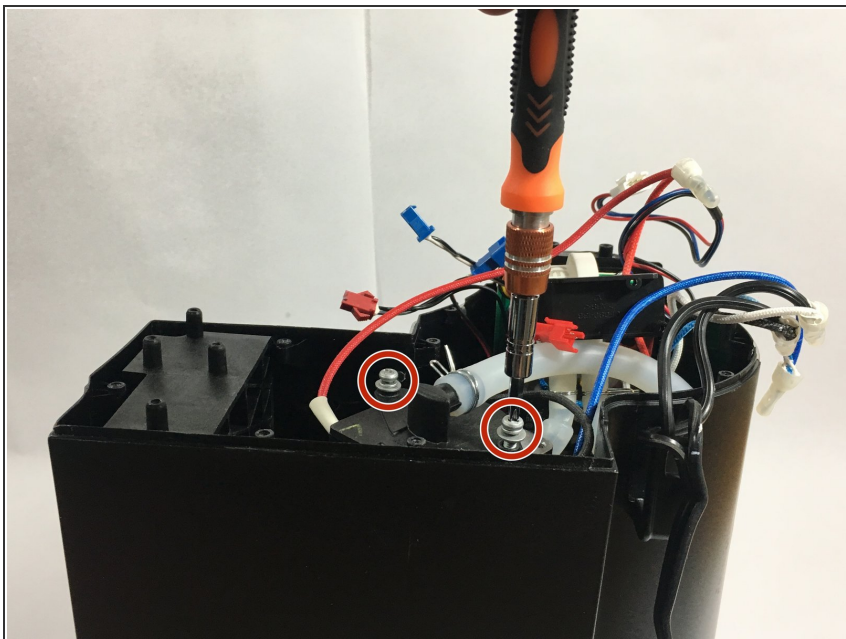
### Step 4



- Locate the water heating element in the interior of your coffee maker.

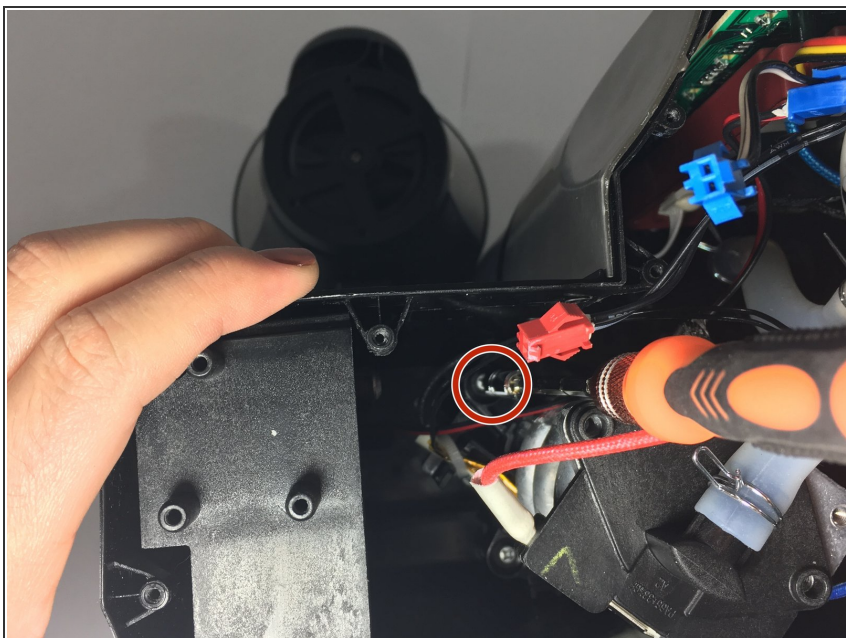


## Step 5



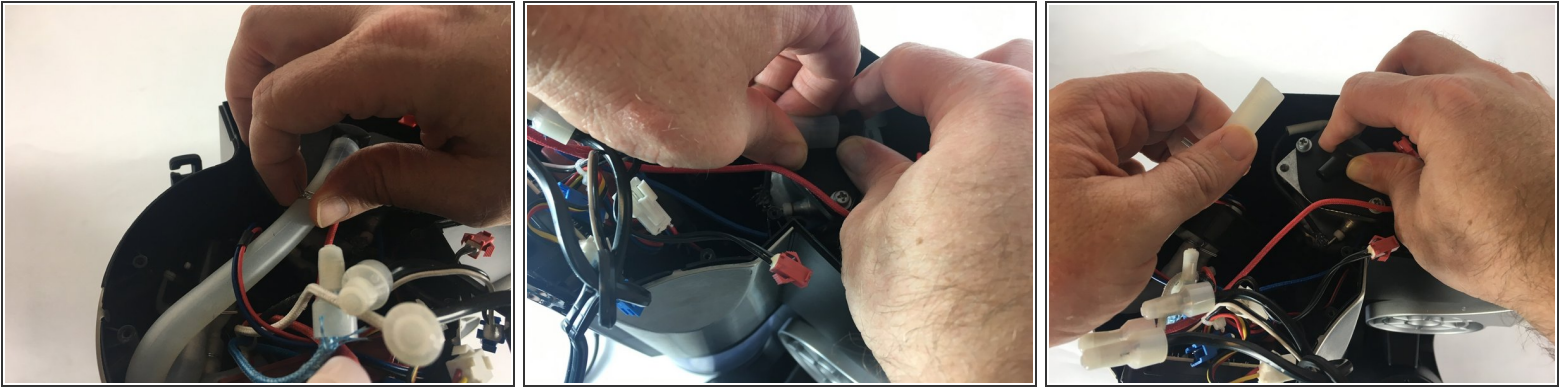
- Unscrew the two indicated J1S1 screws at the base of the water heating element.

## Step 6



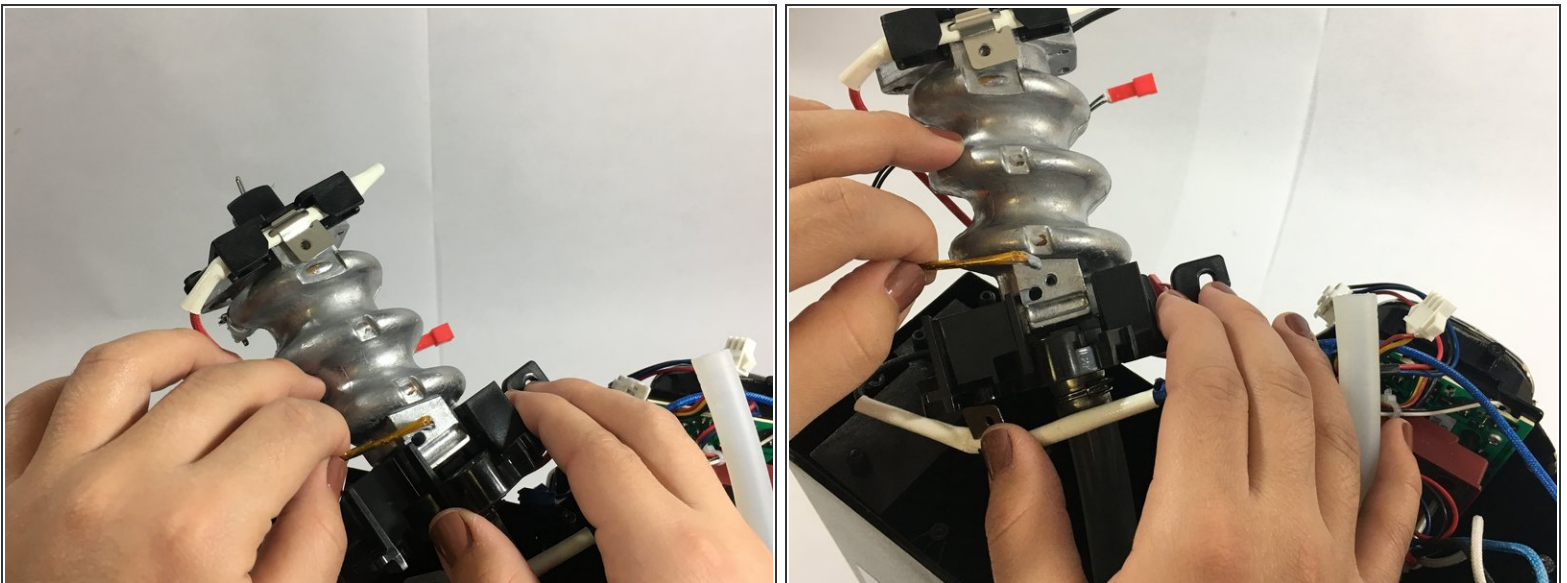
- Unscrew and remove the remaining J1S1 screws that secure the water heating element to the interior of the device.

## Step 7



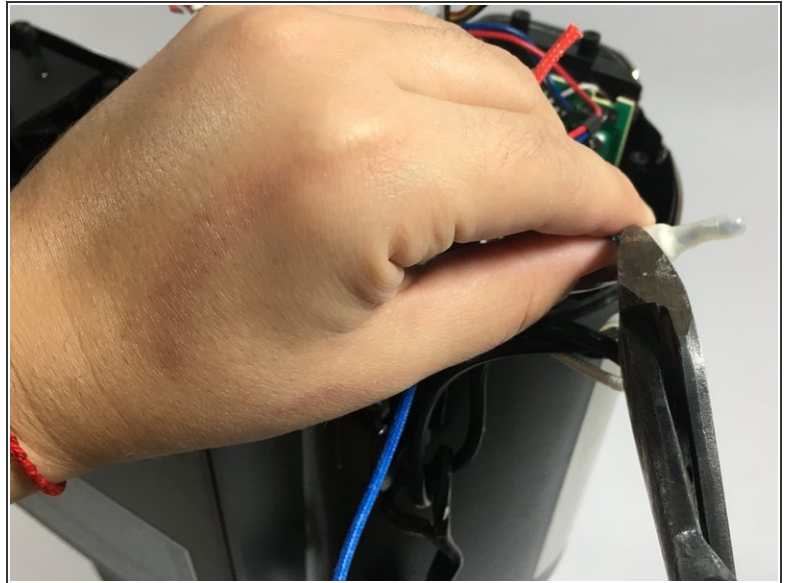
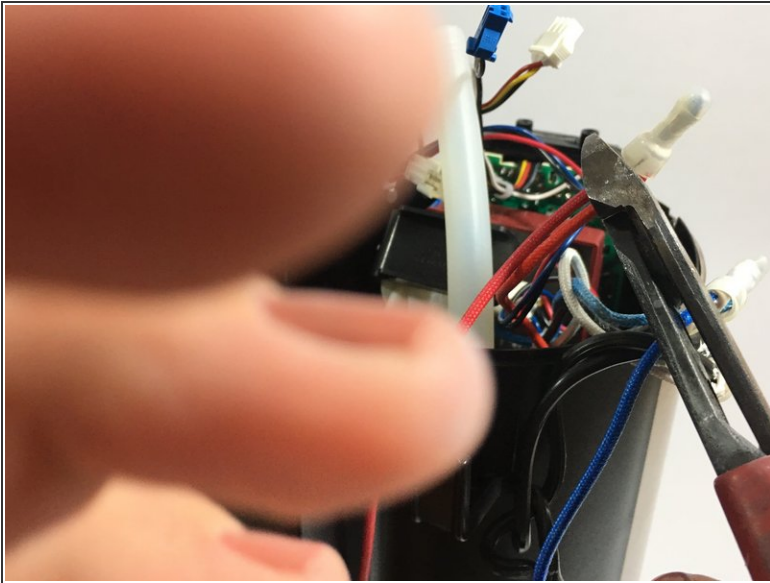
- Grasp and remove the clamp securing the tube that feeds into the base of the water heating element.
- Detach the tube from the water heating element.

## Step 8



- Locate the coated wire that feeds into the side of the water heating element. Remove this wire.

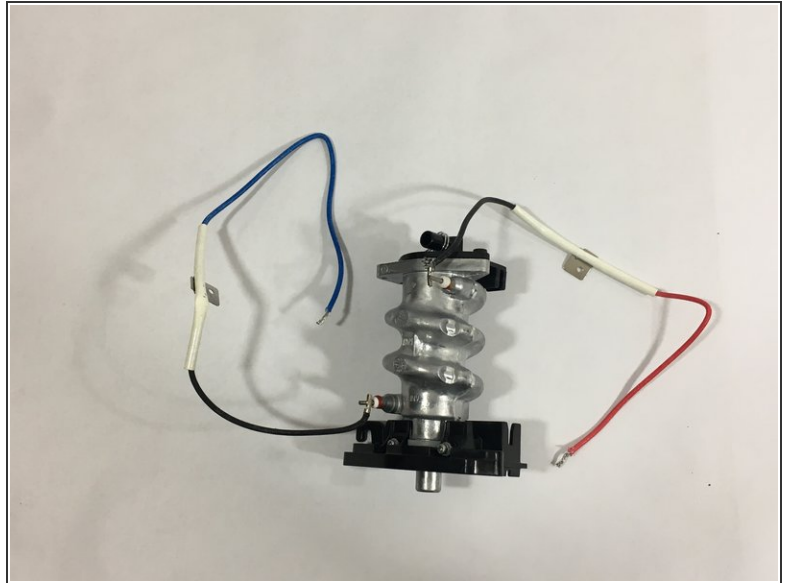
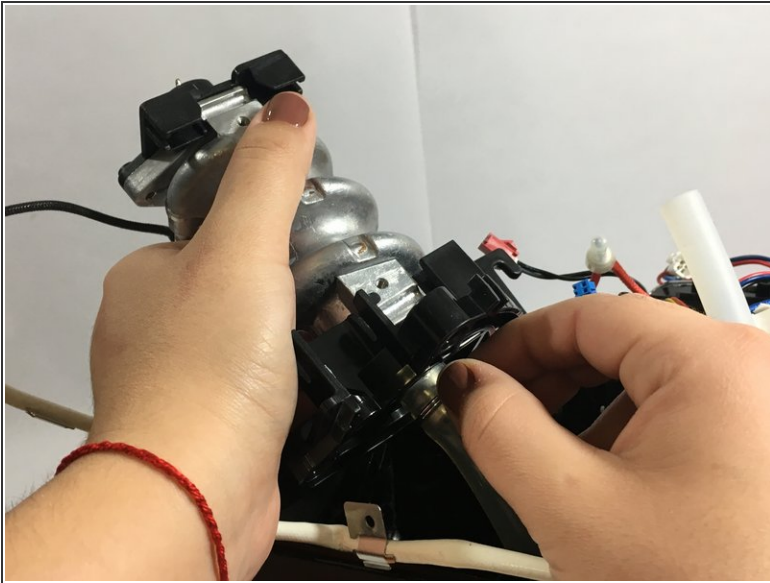
## Step 9



- Locate the two wires leading out from the water heating element that feed into crimp connectors.
- Using side cutters, sever these wires near the crimp connectors.
- Use the side cutters to cut the remaining wires that feed into the crimp connectors from the coffee machine.

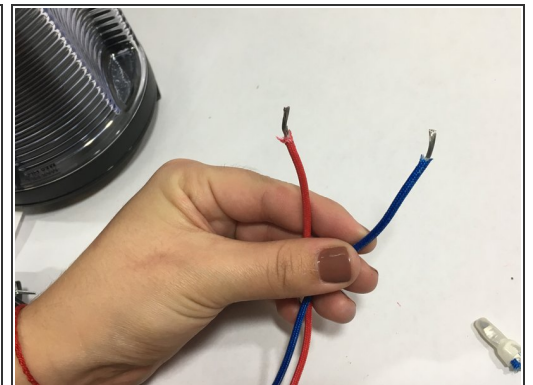
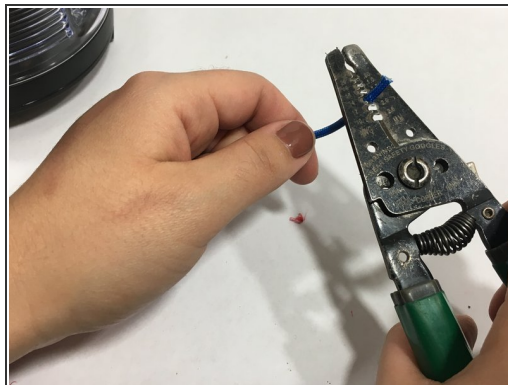
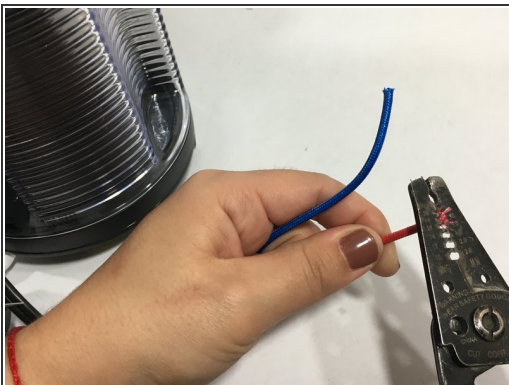


## Step 10



- Squeeze and remove the clamp that secures the main tube feeding into the water heating element. Remove that tube.
- Remove the water heating element.

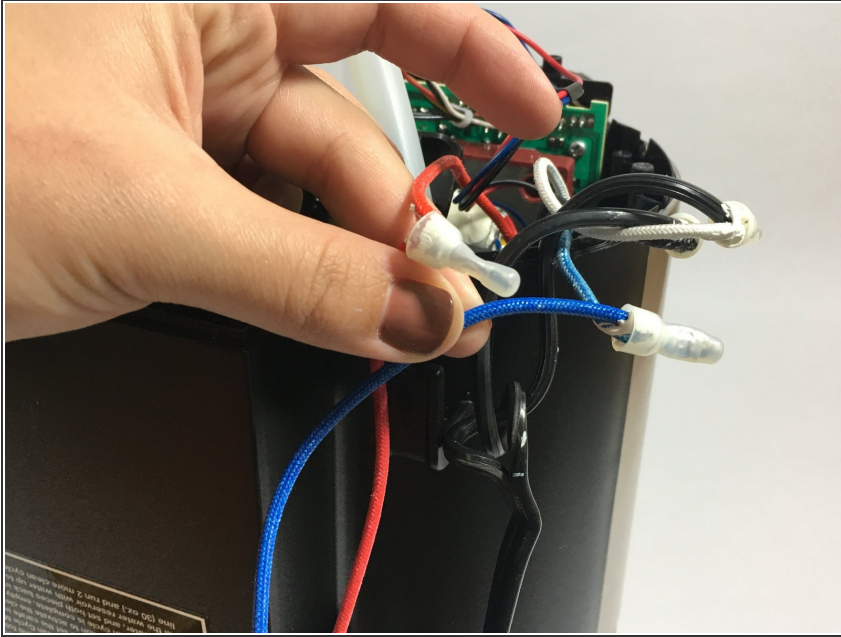
## Step 11



- Using wire strippers, strip the cut wires from your coffee machine near their cut ends to expose 2 cm of metal conductor from each.
- Use a similar procedure to strip the wires from your replacement heating element. Using wire strippers, expose 2 cm of metal conductor from the ends of the wires.

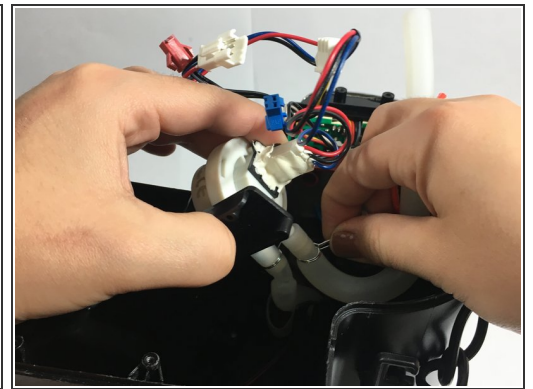
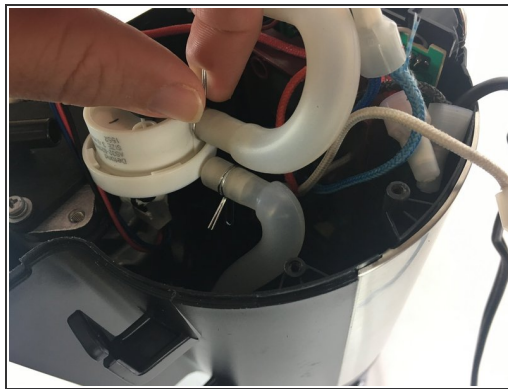
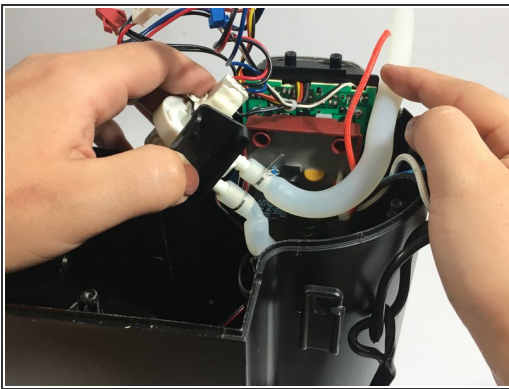


## Step 12



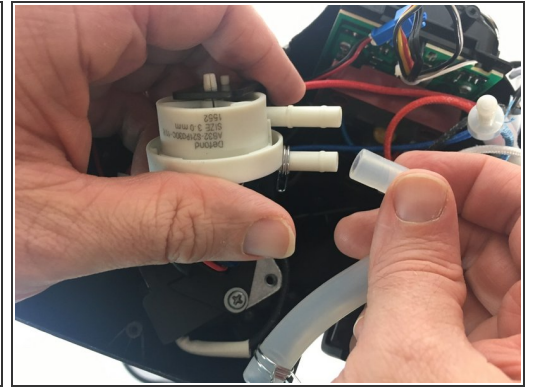
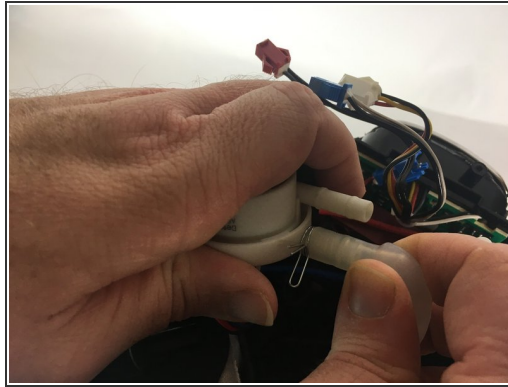
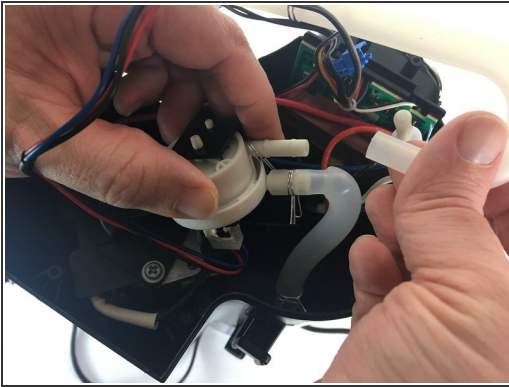
- Prepare two crimp connectors by filling them with dielectric grease.
- Use a crimp connector to connect a stripped end of the wire leading from the replacement heating element to the stripped end of the corresponding wire from the coffee maker.
- Using a second crimp connector, repeat for the remaining pair of stripped wires.
- Using the appropriate crimping tool, crimp the connectors.

## Step 13 — Water Pump



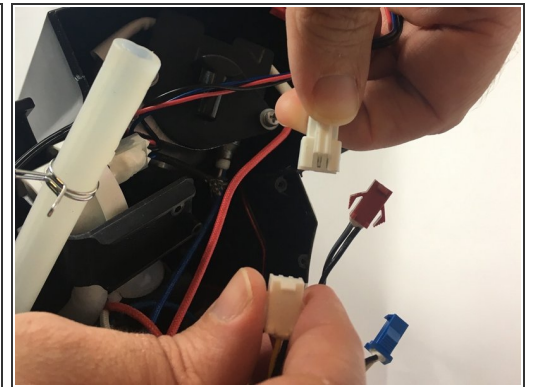
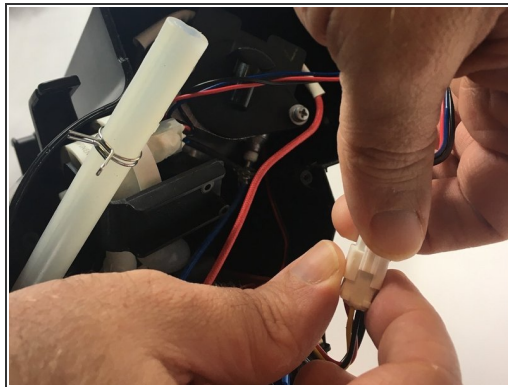
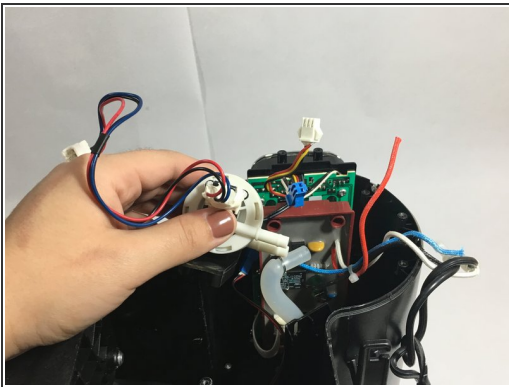
- Locate the water pump in the interior of your device.
- Squeeze and remove the clamps securing the tubes that are connected to the side of the water pump.

## Step 14



- Remove the tubes attached to the side of the water pump.

## Step 15



- Trace the three wires leading out of the water pump until you find the connector linking them to the wires in your device.
- Detach the connector and remove the water pump.

To reassemble your device, follow these instructions in reverse order.