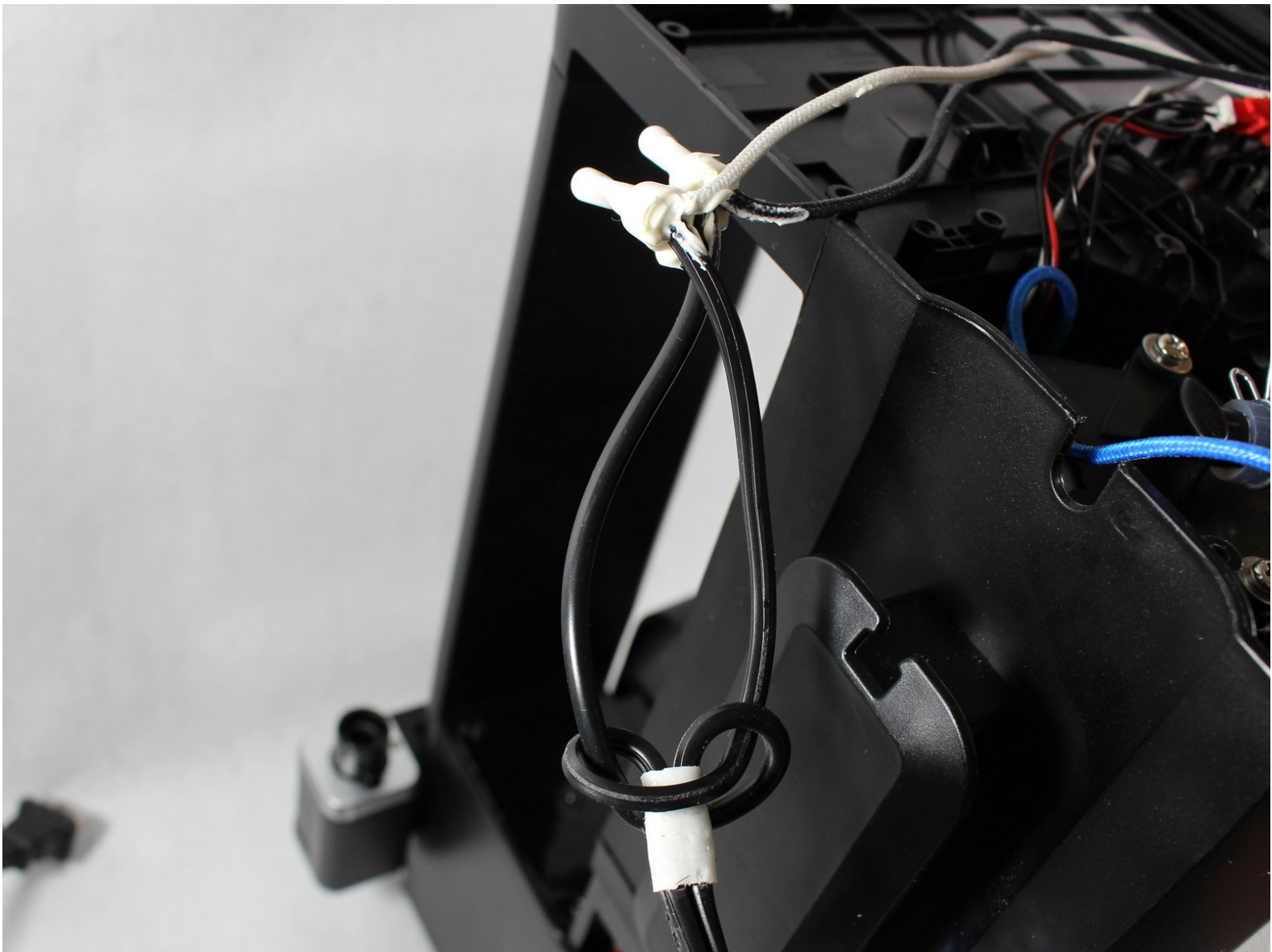




# Ninja Coffee Bar® Single-Serve System Power Cable Replacement

This guide will show how to remove the power cable from a dead Ninja Coffee Bar® Single-Serve System.

Written By: CJ Berg



This document was generated on 2020-04-04 07:02:47 AM (MST).

---

## INTRODUCTION

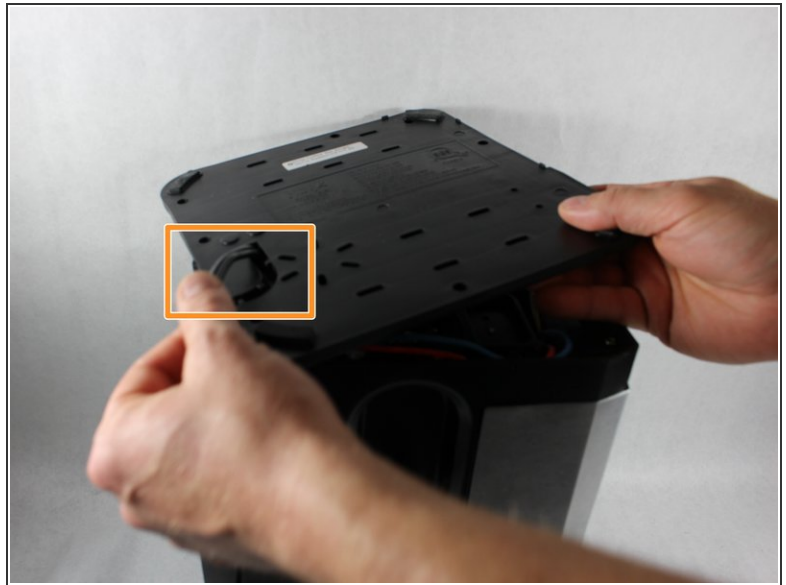
If your Coffee Bar fails to start up when plugged into a wall socket, then a problem with the power cable may be the cause of your issues. Follow this guide to learn how to replace the Ninja Coffee Bar's power cable and breathe new life into your coffee maker. Warning: Be extremely careful when handling power supplies and make sure the unit is completely powered down.



### TOOLS:

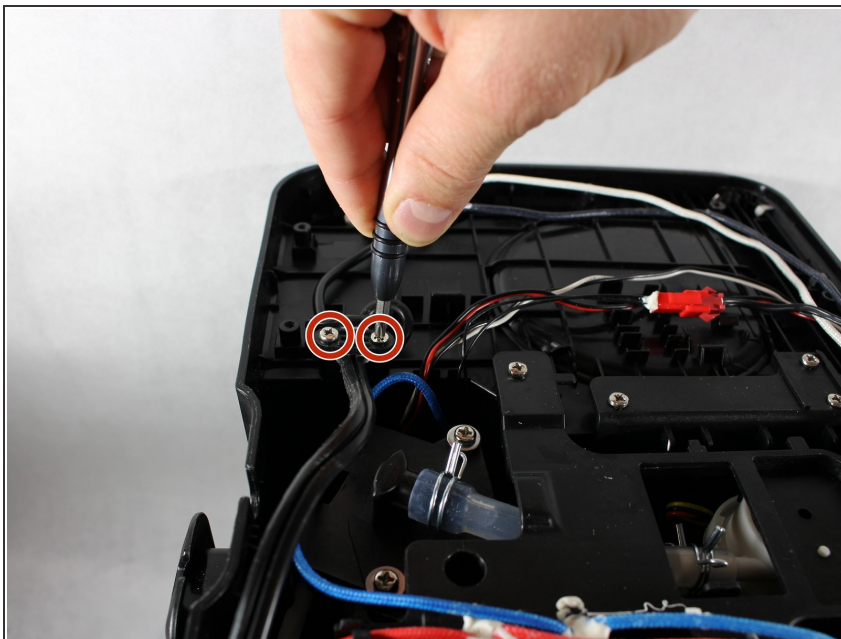
- [Wire stripper/crimping tool](#) (1)
  - [Phillips #1 Screwdriver](#) (1)
-

## Step 1 — Power Cable



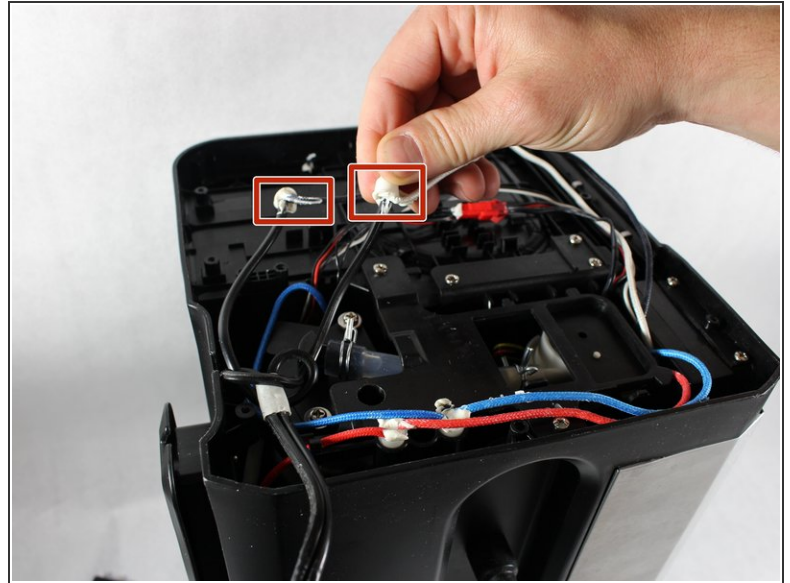
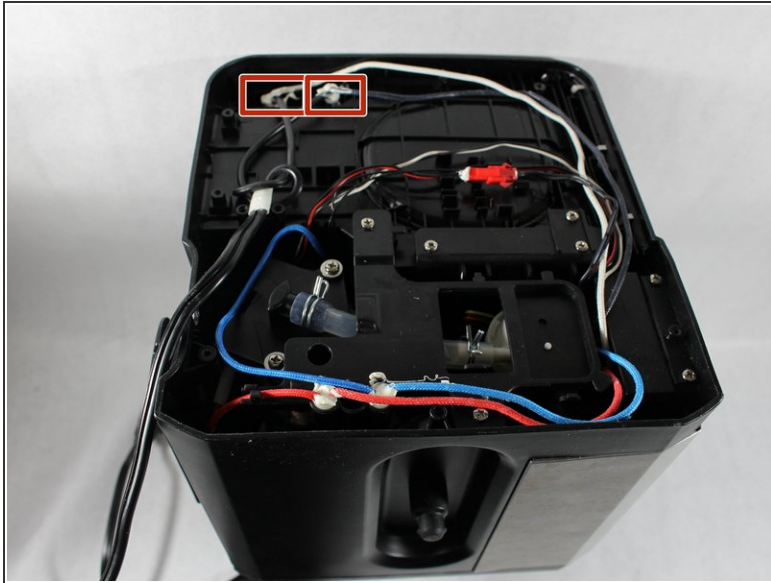
- Unscrew the eight 6mm #1 Phillips head screws off the bottom panel.
- Lift lower panel up while passing the power cord through the opening.

## Step 2



- Loosen two 6mm #1 Phillips head and remove clamp holding power cable.

## Step 3



- Pull the power cable out exposing the two crimped ends.
  - Using a wire stripper/crimping tool, uncrimp wires.
- ⚠ Wiring connectors are sealed together making them difficult to disconnect. Cutting and rewiring should be considered.

To reassemble your device, follow these instructions in reverse order.