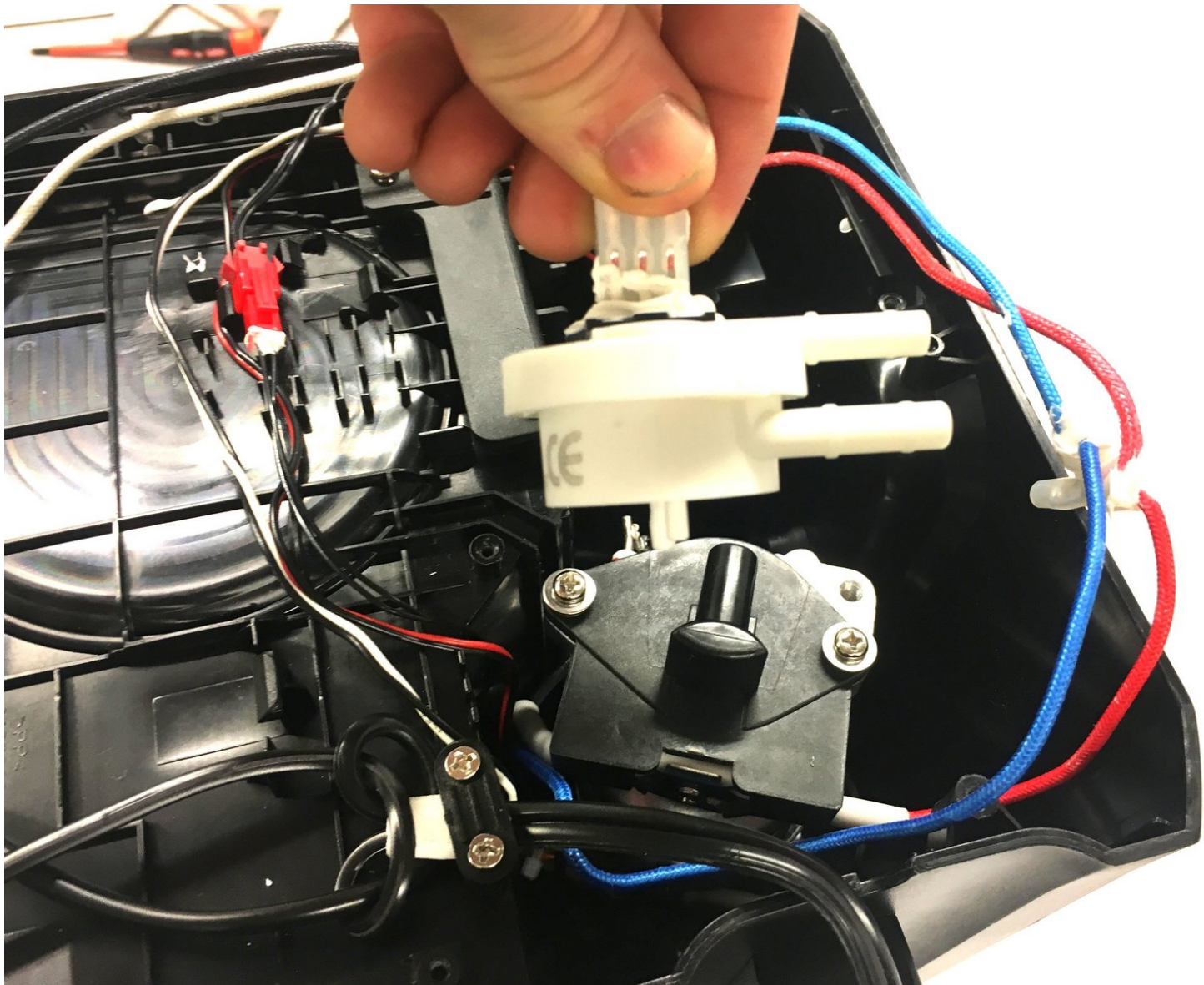




Ninja Coffee Bar® Single-Serve System Water Regulating Valve Replacement

This will be a fix to a device that the water will not flow through.

Written By: Naser Aldousari



INTRODUCTION

This is very similar to replacing the tubes in the device, which is show in another repair guide created for the ninja coffee bar. Be very careful with the screws because they are very small. We would suggest the magnetic mat provided by iFixit so you don't lose the screws. Just like the tube repair guide, be careful removing the protective plate because there are a lot of wires that can not be disconnected. Also, make sure to take some pictures of the wiring just incase some of them do slip loose.

TOOLS:

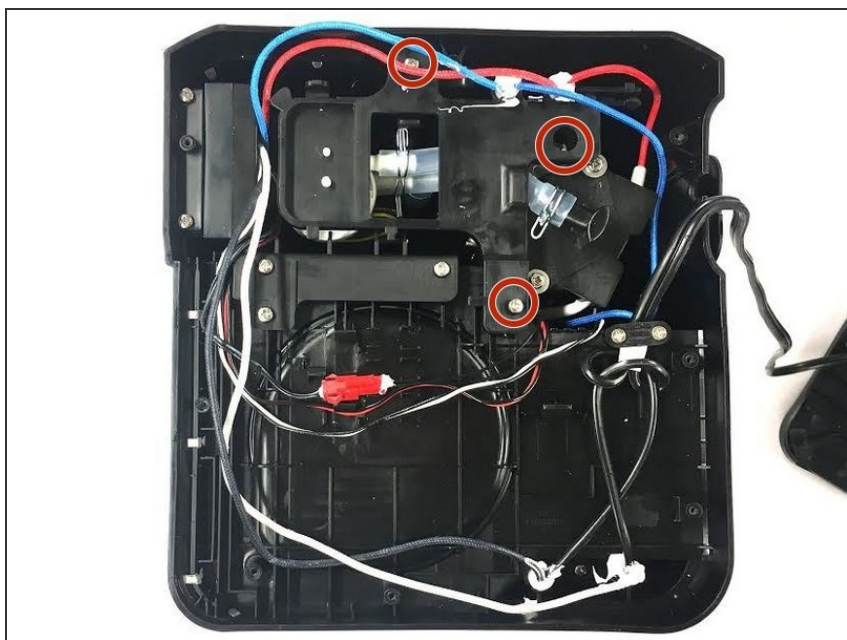
- [Phillips #1 Screwdriver](#) (1)
-

Step 1 — Valve



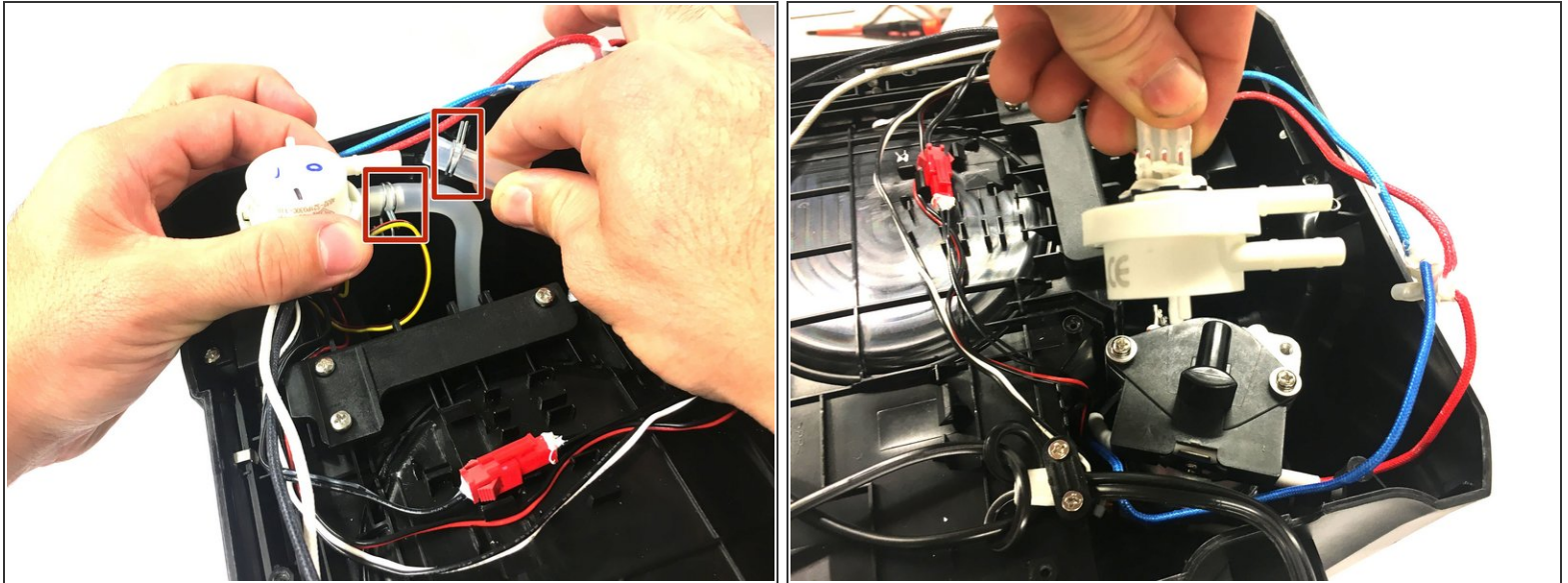
- Unscrew eight 6mm screws with Phillips head #1 screwdriver
- Remove bottom cover

Step 2



- Unscrew three 6mm screws with Phillips head #1 screwdriver
- Remove tube protection plate

Step 3



- Detach valve tubes from valve by squeezing pins and pull tubes away from valve

To reassemble your device, follow these instructions in reverse order.