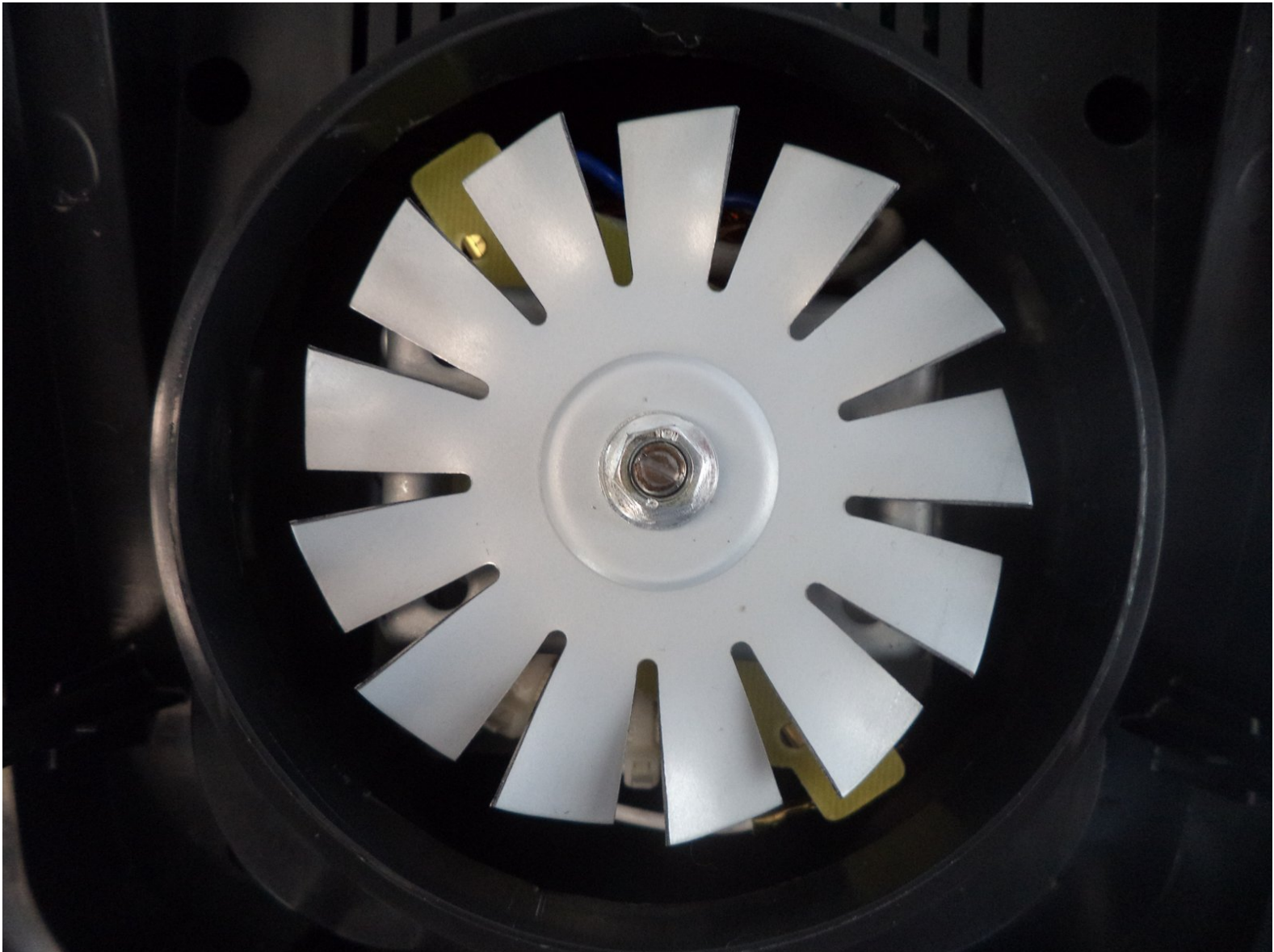




# Ninja Mega Kitchen System BL770 Cooling Fan Replacement

How to remove and replace the cooling fan inside your Ninja Mega Kitchen System BL770.

Written By: Tommee Walker



## INTRODUCTION

In the event that your device overheats, the cooling fan may need to be replaced. This guide will show you step-by-step how to do so.

---

### TOOLS:

- [Phillips #2 Screwdriver](#) (1)
  - [T10 Torx Screwdriver](#) (1)
  - [Flathead Screwdriver](#) (1)
  - [Slip Joint Pliers](#) (1)
-

## Step 1 — Circuit Base



- Remove the five screws (13mm long, 6mm head) attaching the Base Cover using a Phillips screwdriver (Ph2).
- Remove the two screws (13 mm long, 6mm head) attaching the Base Cover using a T10 screwdriver.

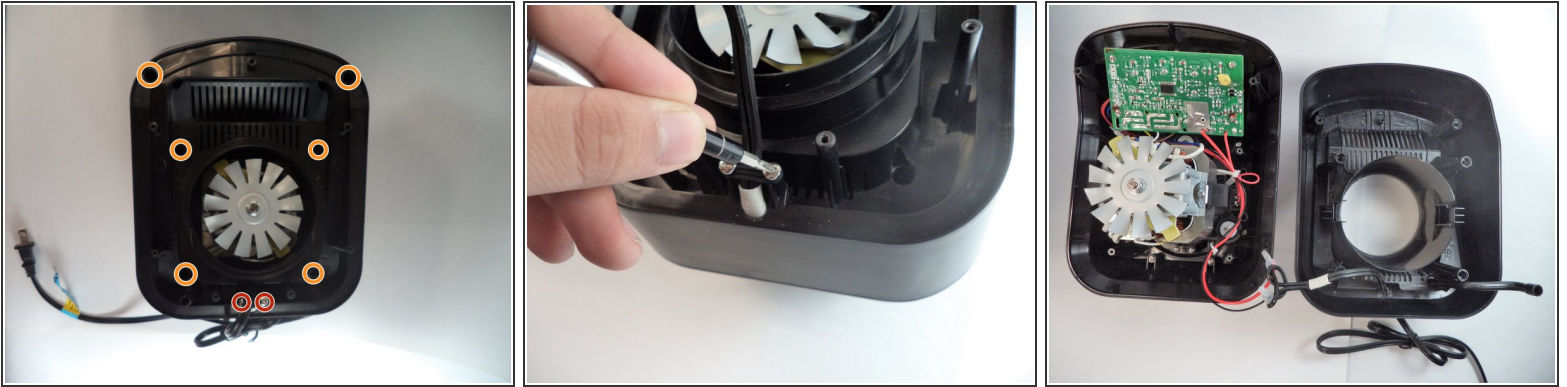
## Step 2



- Carefully remove the second layer from the base. You will not need a screwdriver for this step.

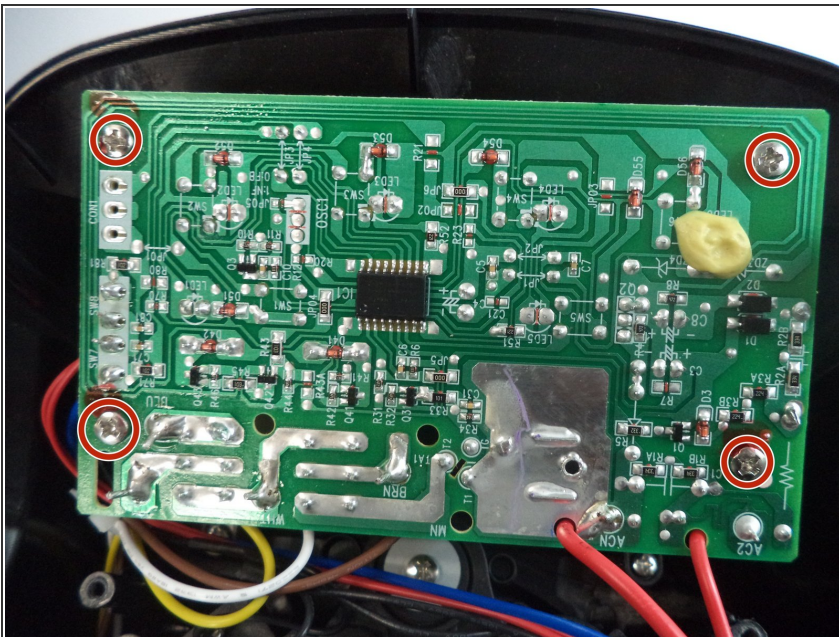


## Step 3



- Remove the 2 screws (13mm, 6mm head) connected to the plastic piece holding down the power cord.
- Then remove the additional 4 screws (13mm, 6mm head) and 2 screws (11mm, 5mm head) securing the base.
- Carefully lift the base up from the rest of the blender.

## Step 4



- Remove 4 screws (11mm, 4mm head) connecting the circuit board to the base.

## Step 5 — Cooling Fan



- Using caution, hold the fan steady and use a wrench or pliers to remove the nut securing the fan.
- Loosen the washer with a flathead screwdriver, then remove the fan and replace with a new one.

To reassemble your device, follow these instructions in reverse order.