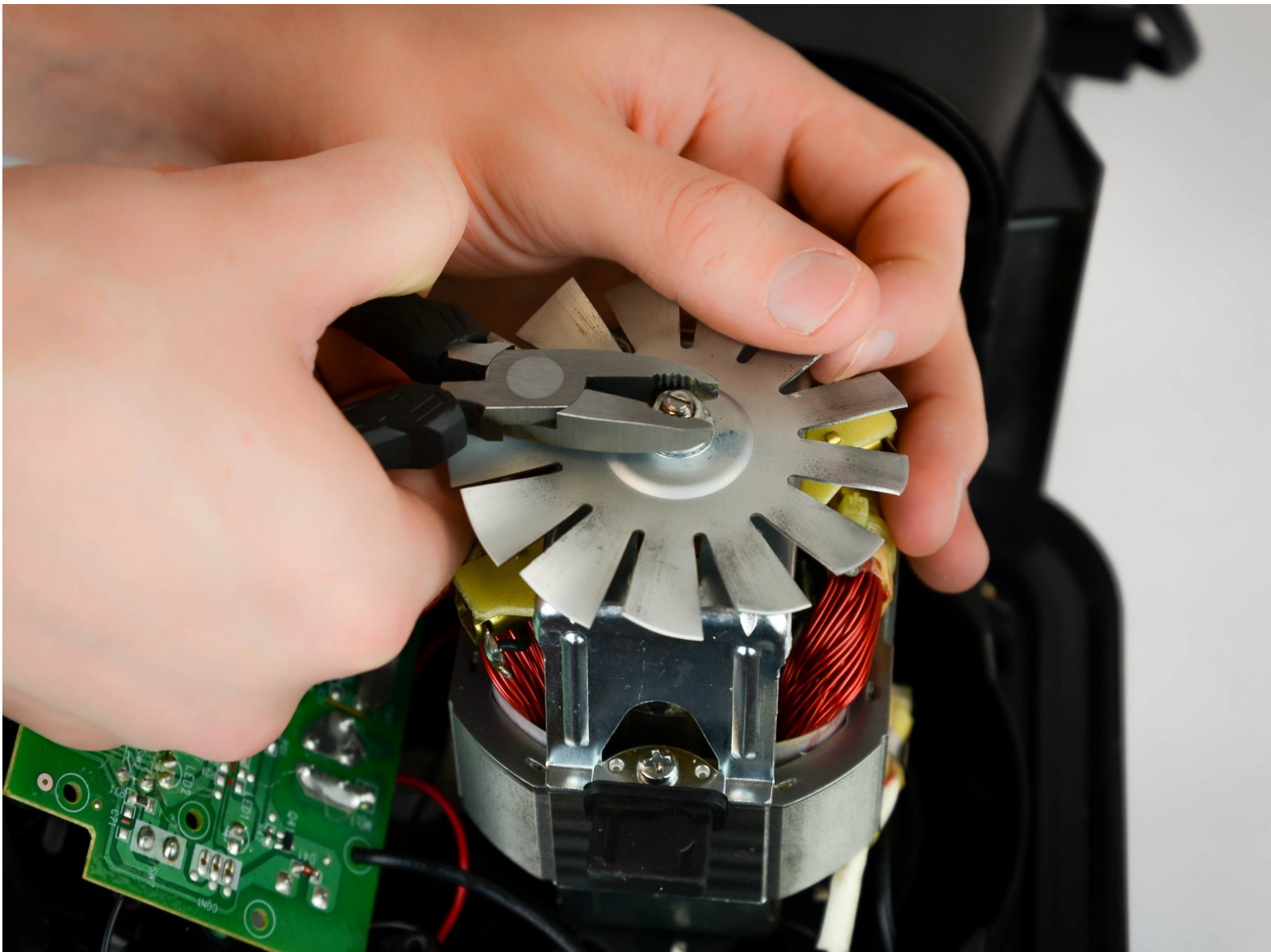




# Ninja Professional BL610 Fan Replacement

This guide shows how the fan can be removed for replacement due to manufacturing defect.

Written By: Rosniel Castro



---

## INTRODUCTION

In this guide we will be removing the blender base and the component housing to get to the fan.

---



### TOOLS:

- [Large Needle Nose Pliers](#) (1)
  - [Phillips #2 Screwdriver](#) (1)
-

## Step 1 — Fan



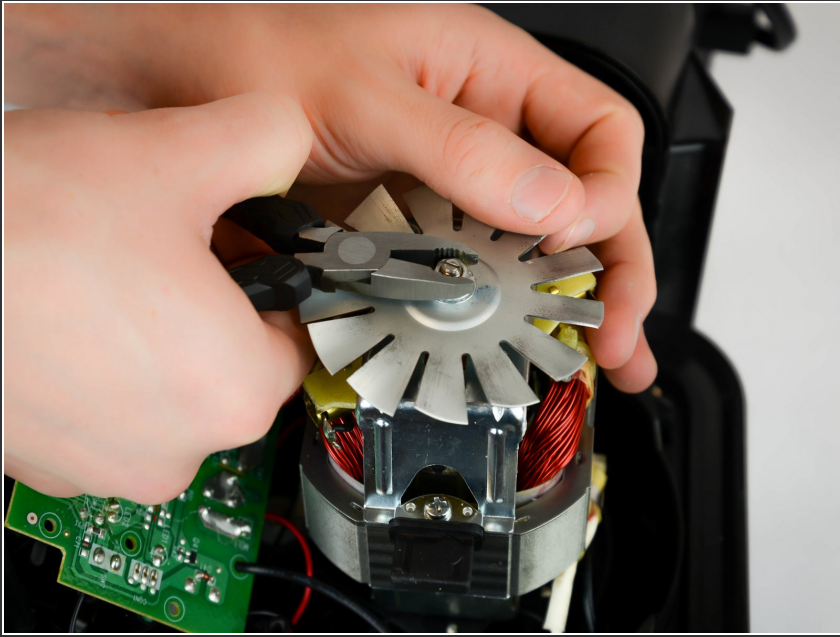
- Remove six screws (12mm long, 6mm head diameter) from bottom of the blender using a Phillips #2 screwdriver

## Step 2



- Remove six screws (12mm long, 6mm head diameter) from component housing using Phillips #2 screwdriver.

### Step 3



- Using a needle nose pliers, remove nut holding fan in-place. Be careful with fan blades and use a glove or a thick cloth to protect hands.

To reassemble your device, follow these instructions in reverse order.