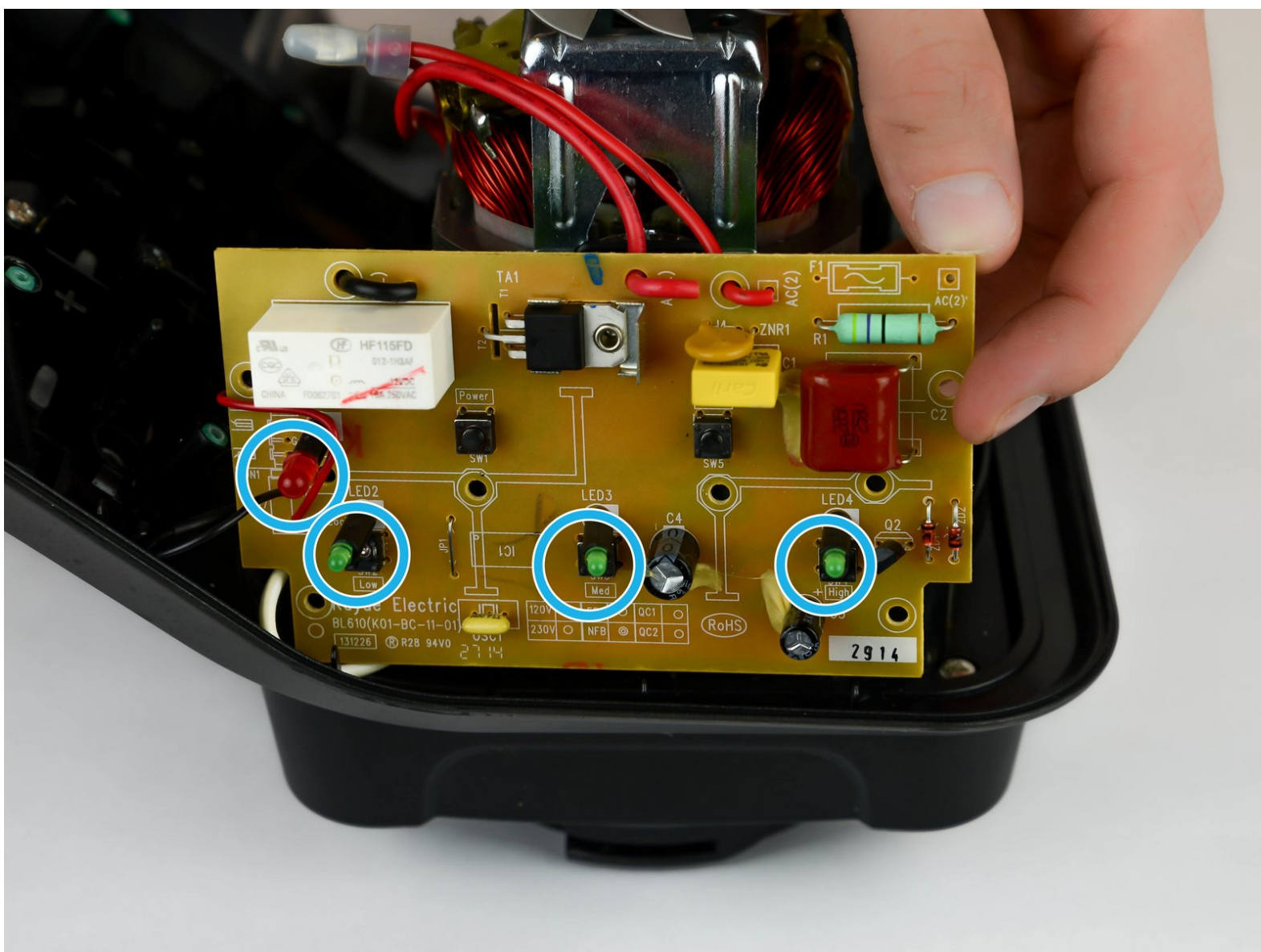




Ninja Professional BL610 LED Replacement

In this guide we will go about replacing the LED on the circuit board. This process can be done to any LED.

Written By: Rosniel Castro



INTRODUCTION

Use this guide to replace the LED on the circuit board of your device.



TOOLS:

- [Phillips #2 Screwdriver](#) (1)
 - [Soldering Workstation](#) (1)
-

Step 1 — LED



- Remove six screws (12mm long, 6mm head diameter) from bottom of the blender using a Phillips #2 screwdriver.

Step 2



- Remove six screws (12mm long, 6mm head diameter) from component housing using Phillips #2 screwdriver.

Step 3



- Remove five screws from circuit board using Phillips #2 screwdriver.

Step 4



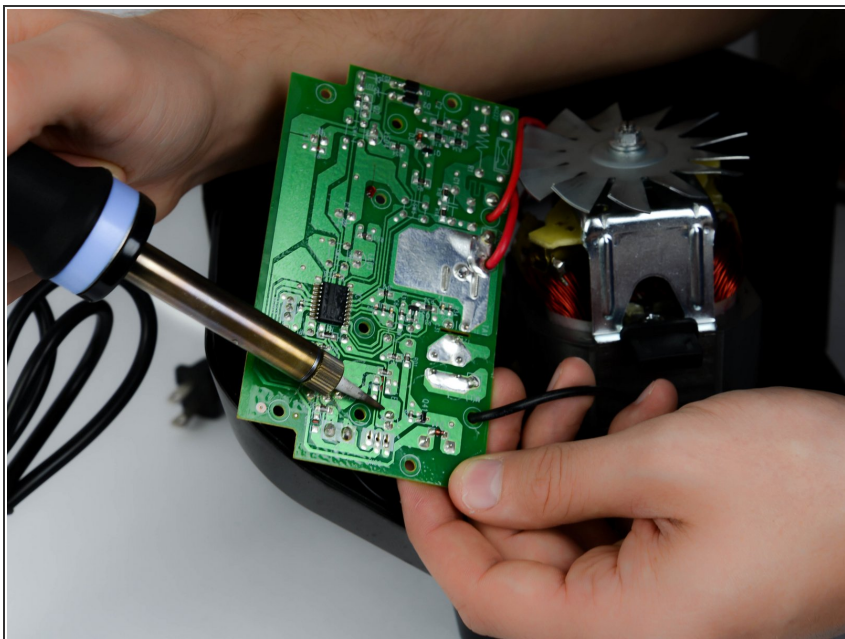
- Once the screws are removed, lift the circuit board to access the back.

Step 5



- Locate the LED you wish to replace and note its position on the opposite side of the circuit board.

Step 6



- Desolder both of the LED leads and remove the LED light. Note the orientation of LED, this is important for replacing the LED. The Replacement LED needs to be soldered in the same orientation.

To reassemble your device, follow these instructions in reverse order.