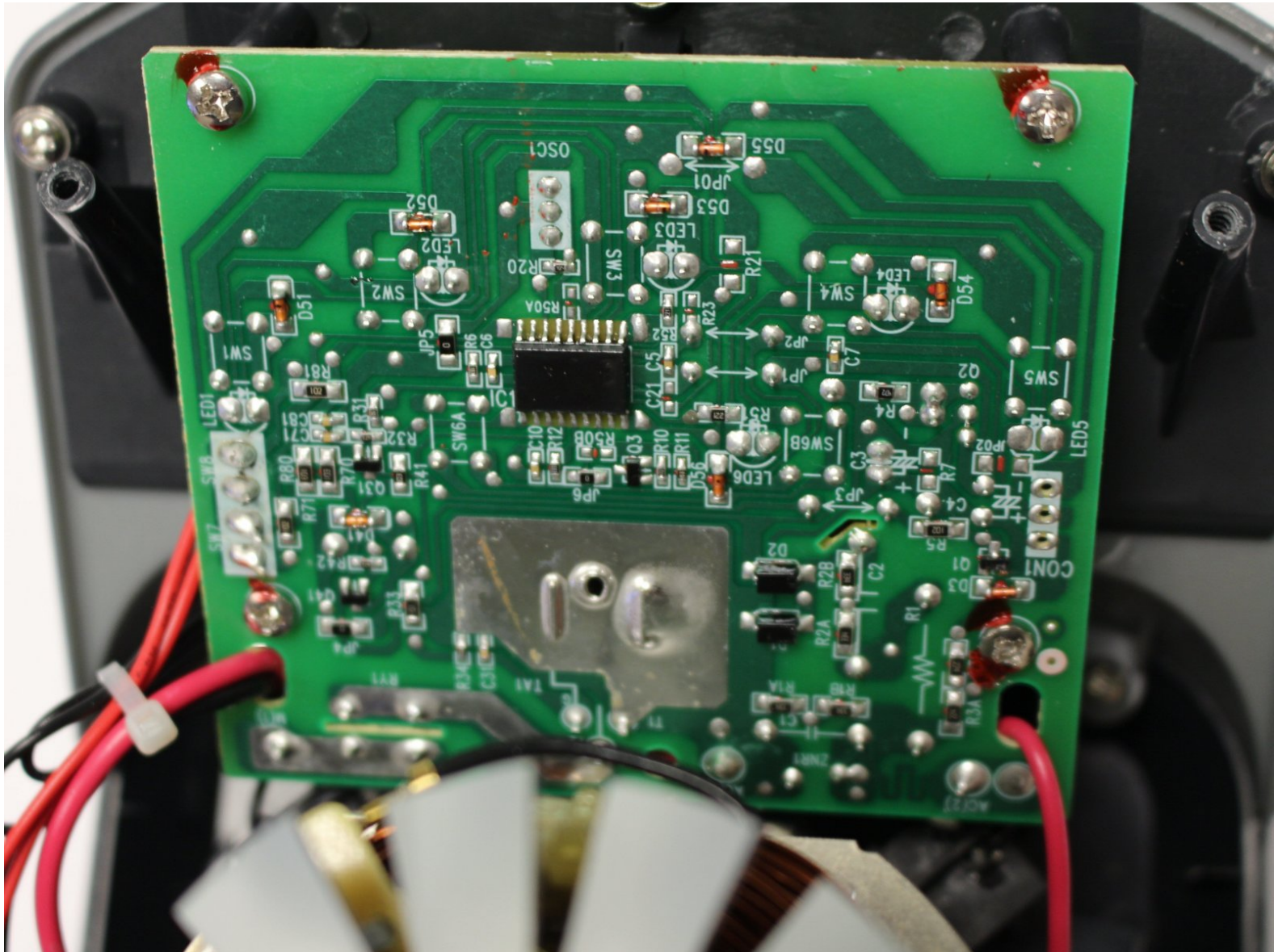




Ninja Professional Blender BL660 Circuit Board Replacement

Replacement of a defective circuit board.

Written By: Mikey Marquiss



INTRODUCTION

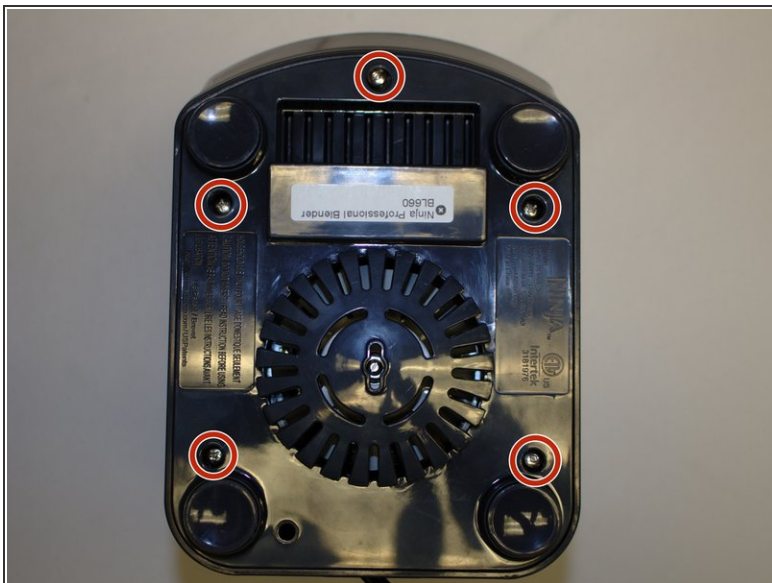
If the blender doesn't power on, the circuit board may be damaged. This guide will show you how to replace a non-responsive circuit board.



TOOLS:

- [Phillips #1 Screwdriver](#) (1)
 - [iFixit Opening Tools](#) (1)
 - [Soldering Iron](#) (1)
 - [Utility Scissors](#) (1)
-

Step 1 — Blender Base



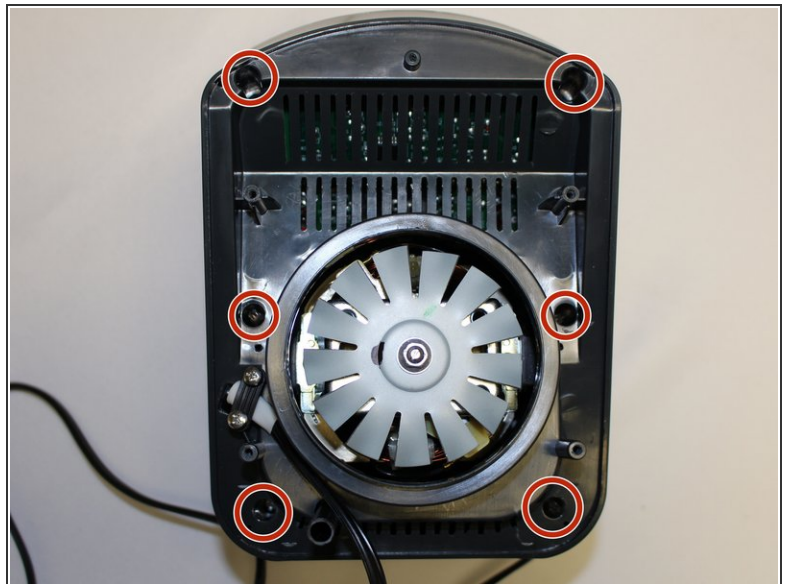
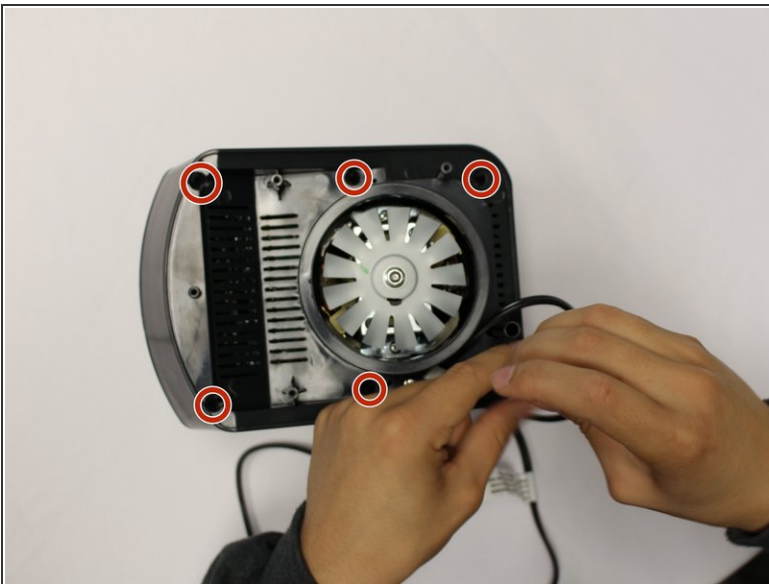
- Using the Phillips #1 screwdriver, remove the 5 screws (13mm long, 6mm wide) holding the outer base.
- Lift the base up to remove it.

Step 2



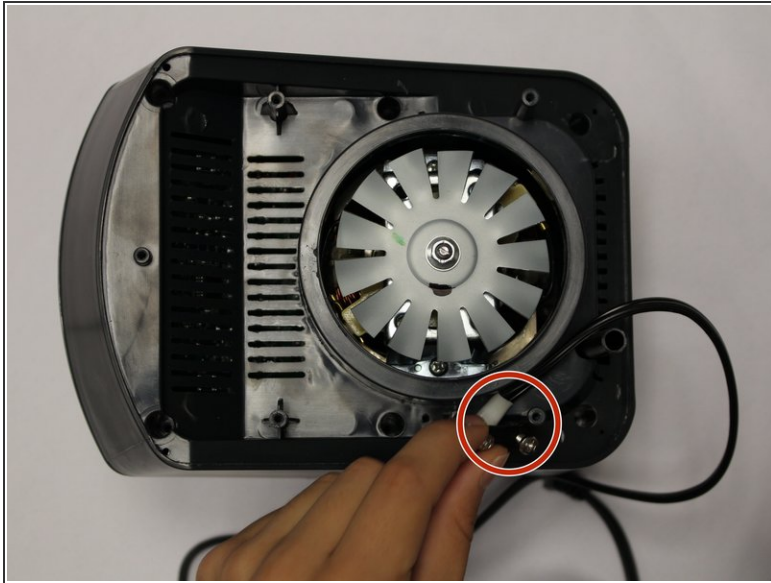
- Remove the midsection by pulling it up. If the section is stuck, use the iFixit plastic opening tool to pry it off.
- Pull the power cord through the mid-section opening.

Step 3



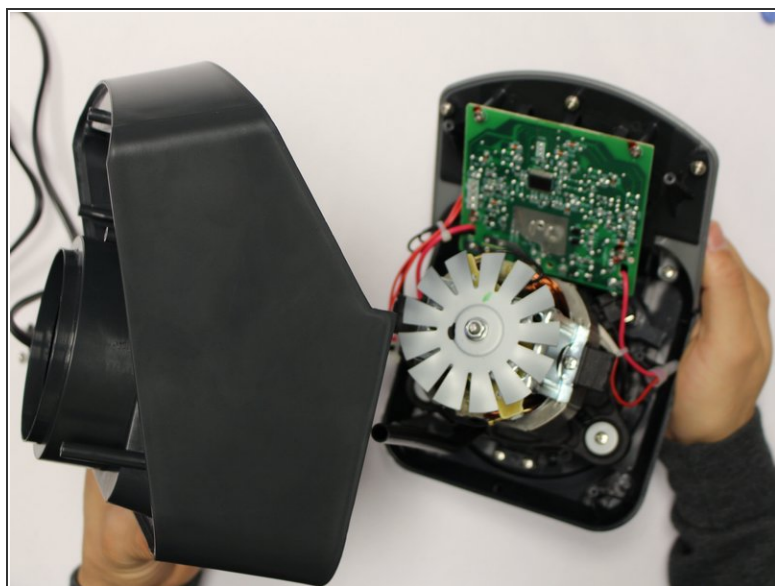
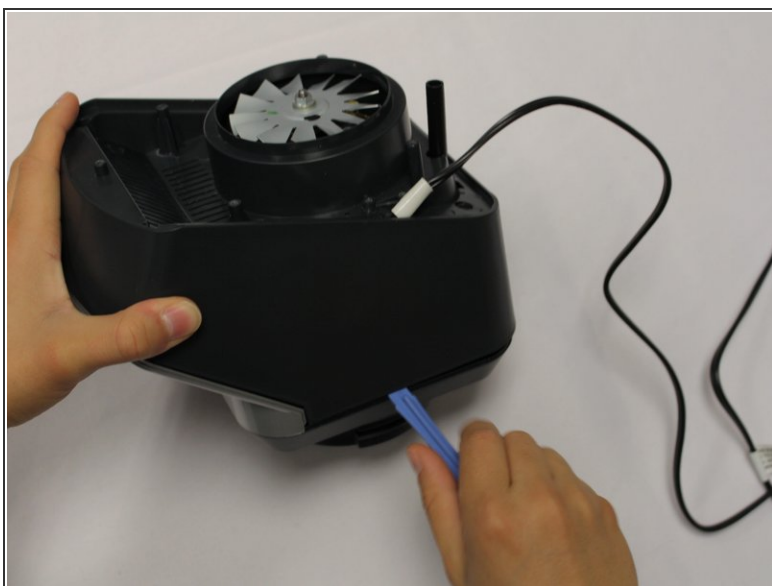
- Using the Phillips #1 screwdriver, remove the 6 screws (13 mm long, 6 mm wide).

Step 4



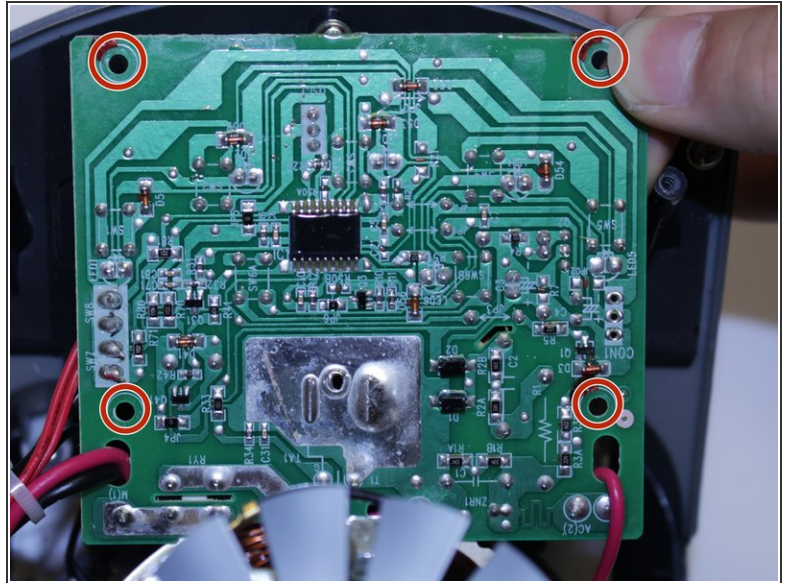
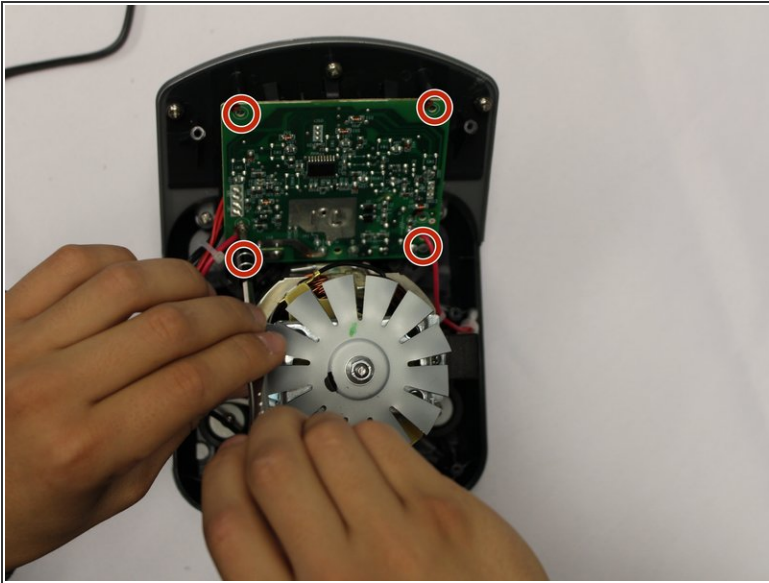
- Using the Phillips #1 screwdriver, remove the two screws (5 mm long, 3 mm wide) holding the power cord onto the motor cover.

Step 5



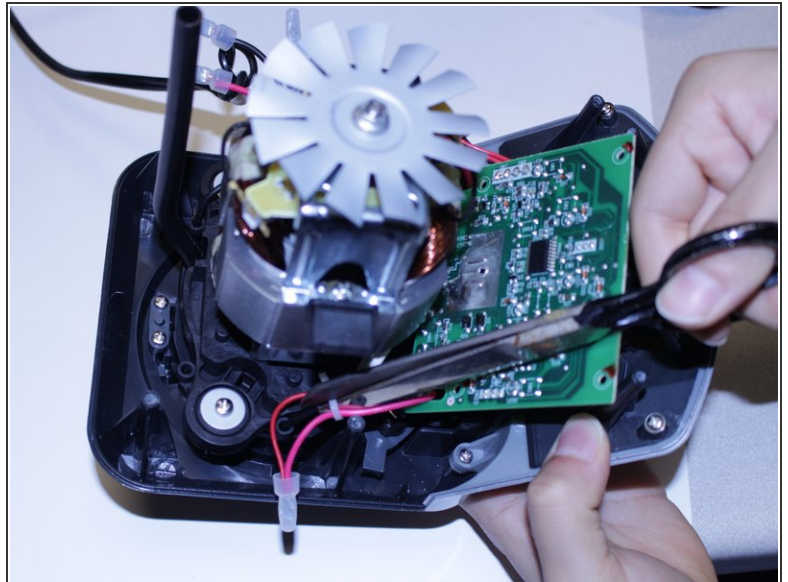
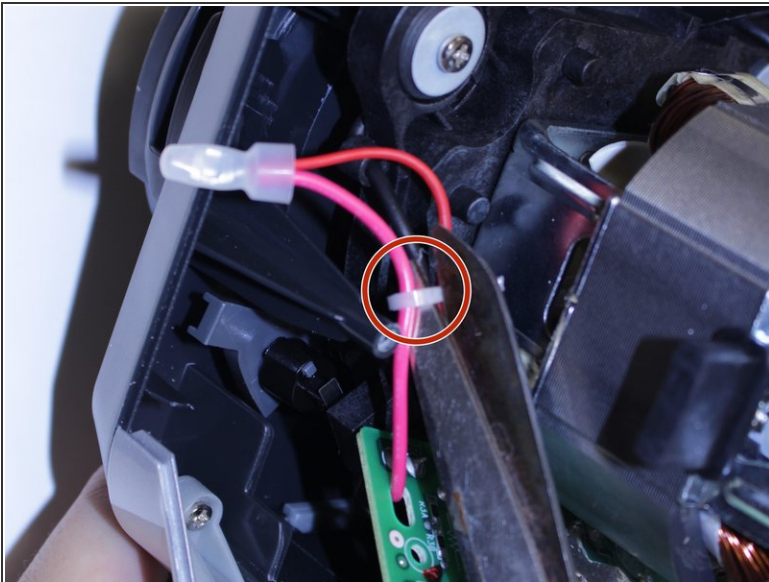
- Using the iFixit plastic opening tool, pry the motor cover off the general housing. Once it is loose, lift it up to remove it off the base.
- Slide the cover all the way to the end of the power cord.
- ⓘ Please note that the power cord does not completely come off the cover.

Step 6 — Circuit Board



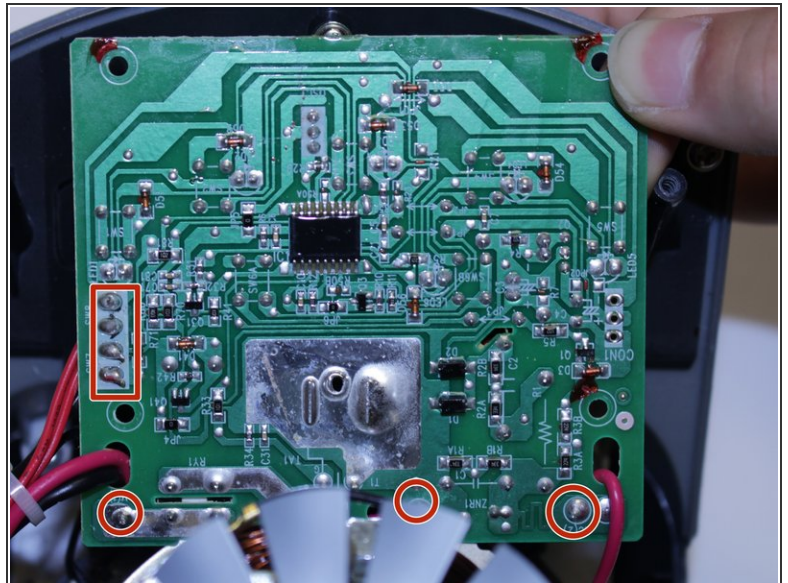
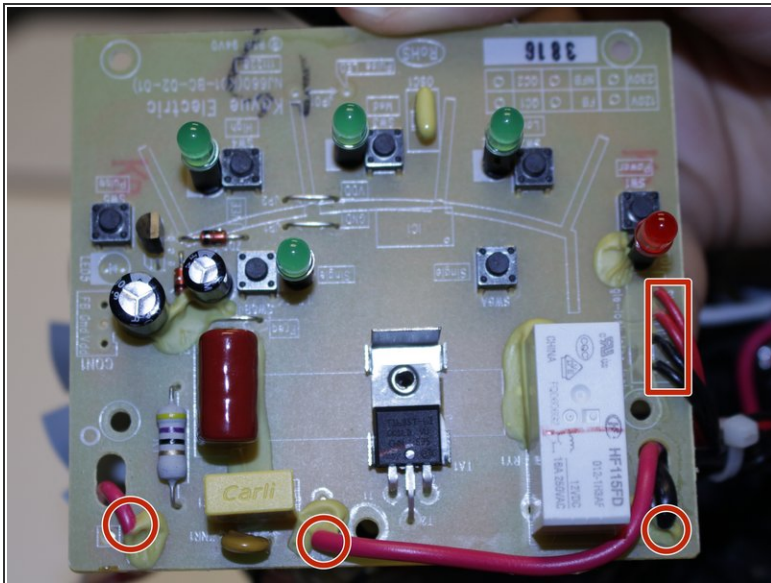
- Using the Phillips #2 screwdriver remove the 4 screws (10mm long, 5mm wide) on the circuit board.

Step 7



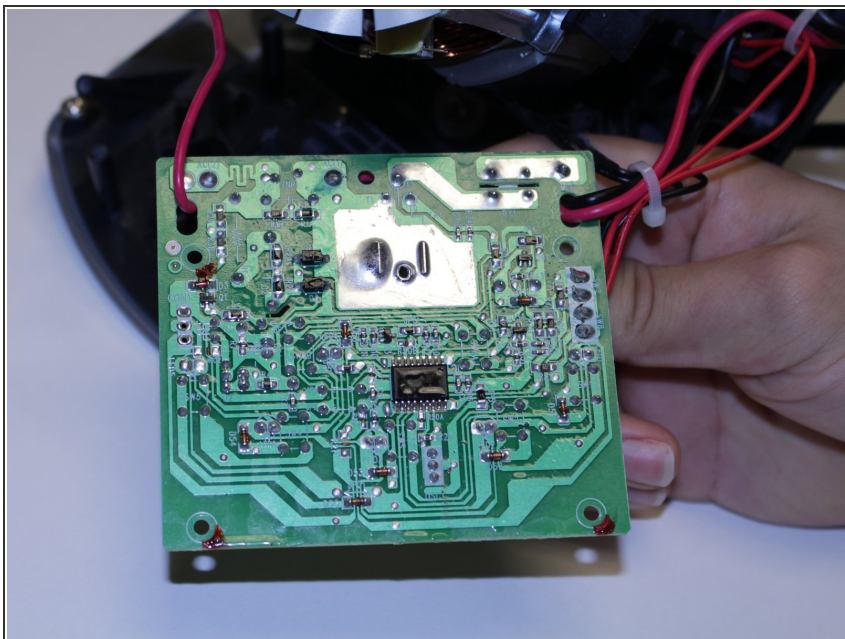
- To give the circuit board further range of motion, remove the pictured zip ties holding the cables.

Step 8



- Desolder the seven wires indicated from the circuit board.
- For further instruction on soldering and desoldering reference iFixit's [guide](#).
- ⓘ To ensure the soldering of the correct wires, make sure to flip the circuit board over and confirm the wires that are being altered.
- ⚠ Soldering iron is hot. Handle with care.

Step 9



- Once the wires are cool to the touch, remove circuit board.
- ⓘ Remember to keep track of all cables removed to ensure their correct placement into the new circuit board.
- ⓘ Ninja Kitchen does not sell circuit boards. You will have to purchase one from a third party vendor.

To reassemble your device, follow these instructions in reverse order.