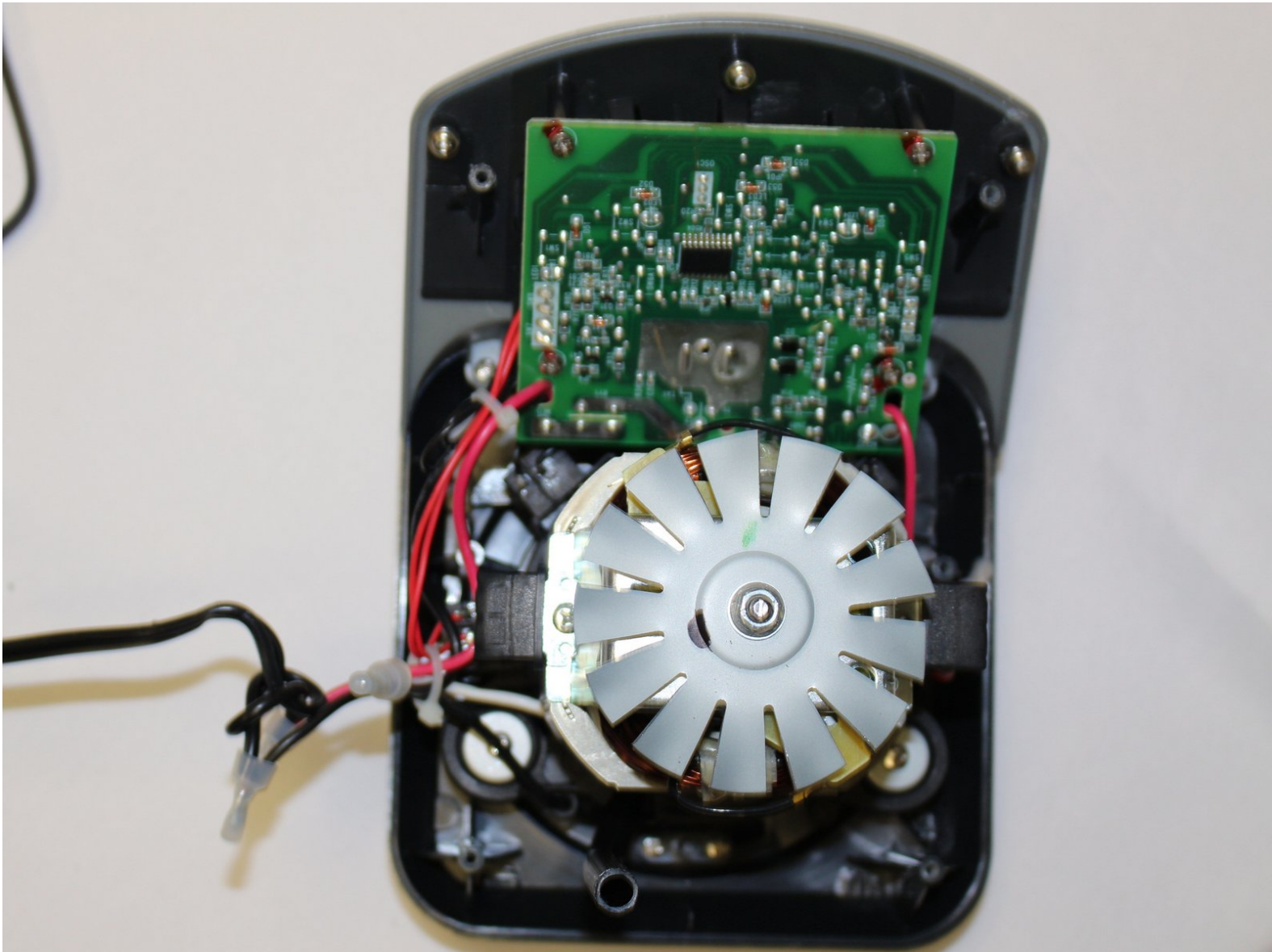




Ninja Professional Blender BL660 Fan Replacement

Replace a broken or damaged fan.

Written By: Mikey Marquiss



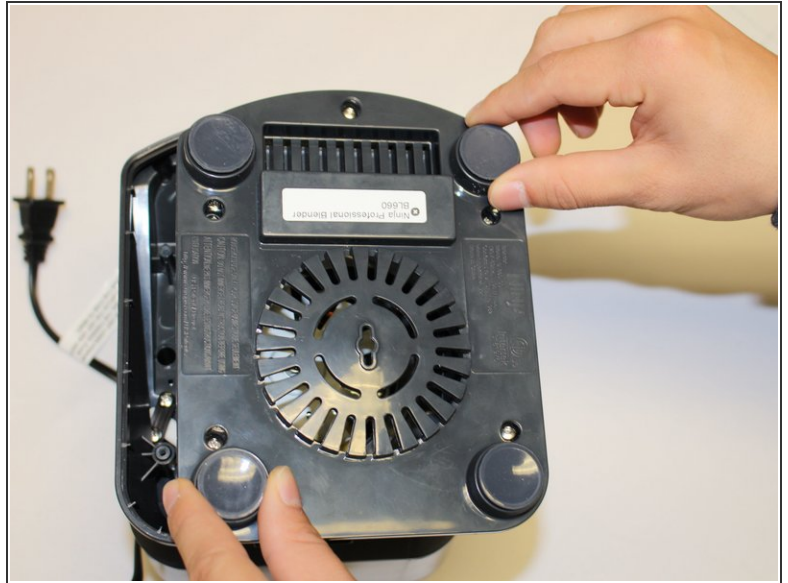
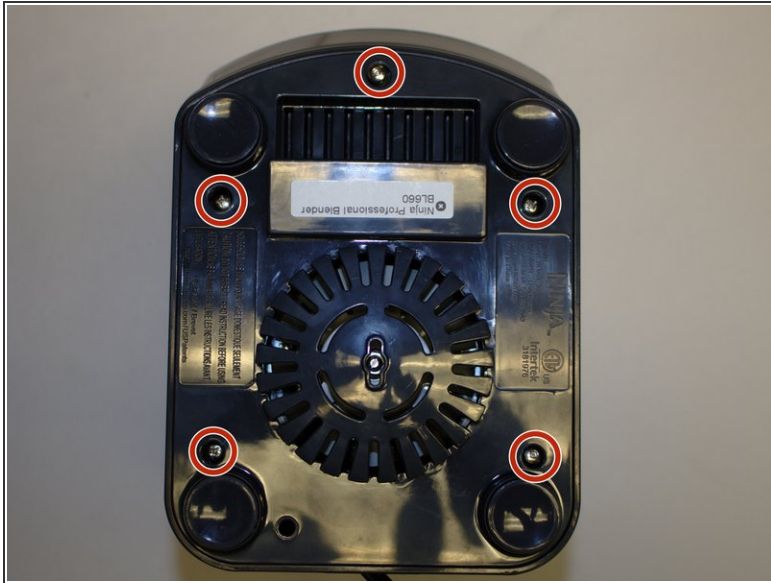
INTRODUCTION

If your blender is too loud, your fan may be damaged or loose. This guide will show you how to replace a broken or damaged fan.

TOOLS:

- [Phillips #1 Screwdriver](#) (1)
 - [iFixit Opening Tools](#) (1)
 - [Large Needle Nose Pliers](#) (1)
-

Step 1 — Blender Base



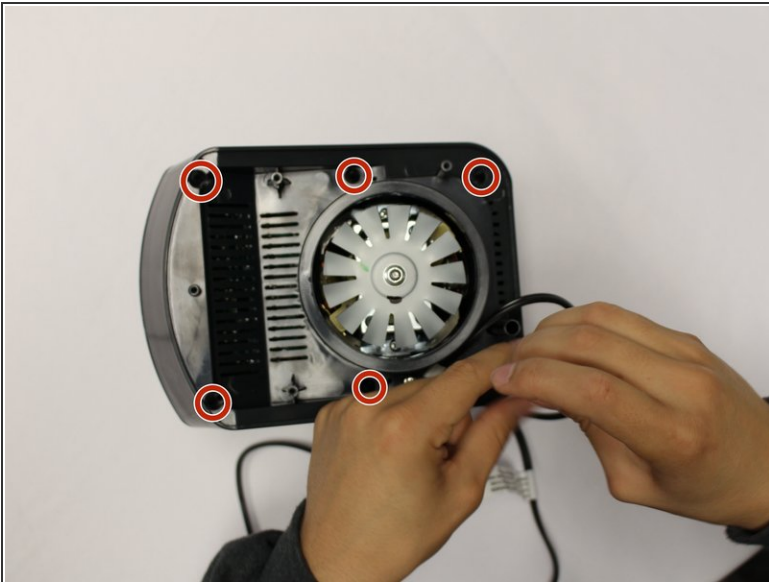
- Using the Phillips #1 screwdriver, remove the 5 screws (13mm long, 6mm wide) holding the outer base.
- Lift the base up to remove it.

Step 2



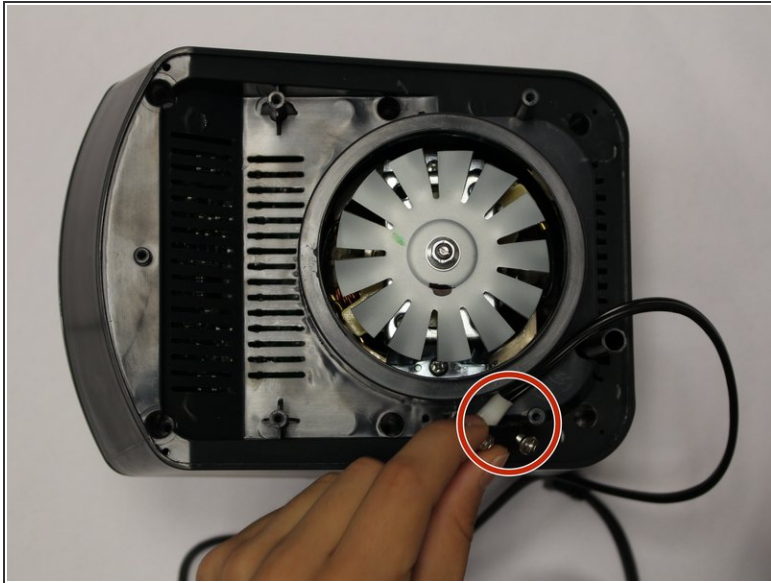
- Remove the midsection by pulling it up. If the section is stuck, use the iFixit plastic opening tool to pry it off.
- Pull the power cord through the mid-section opening.

Step 3



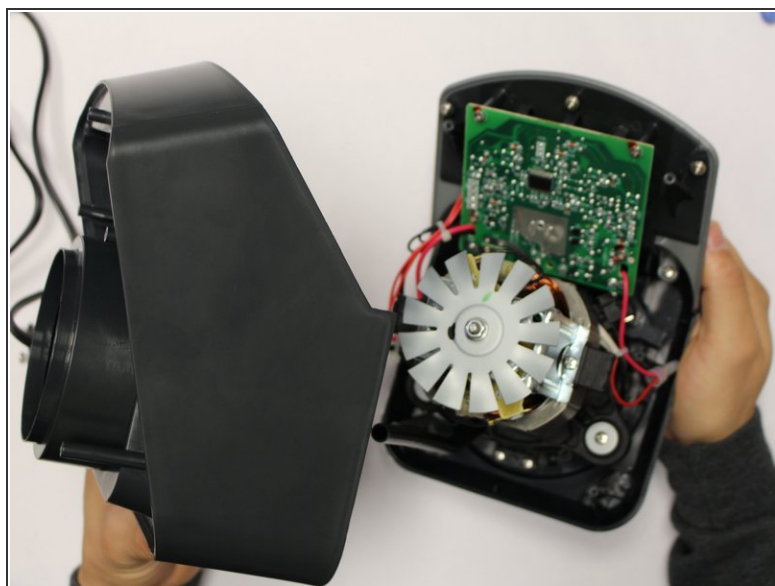
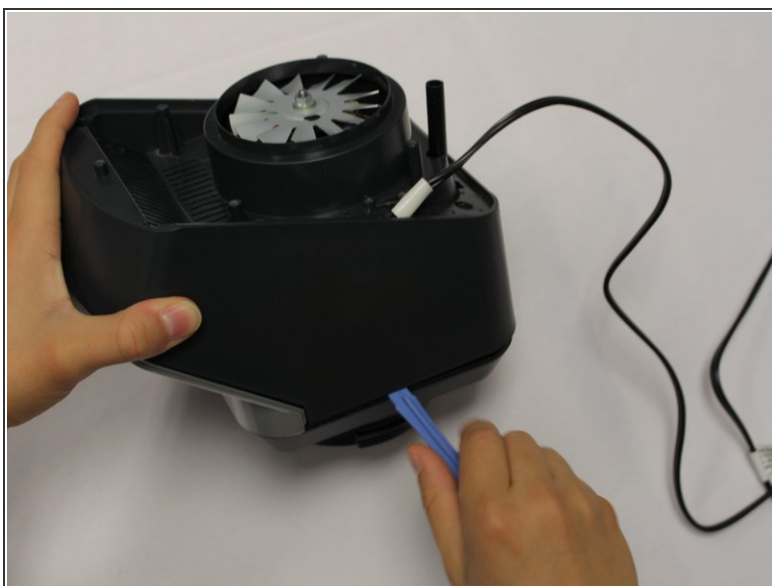
- Using the Phillips #1 screwdriver, remove the 6 screws (13 mm long, 6 mm wide).

Step 4



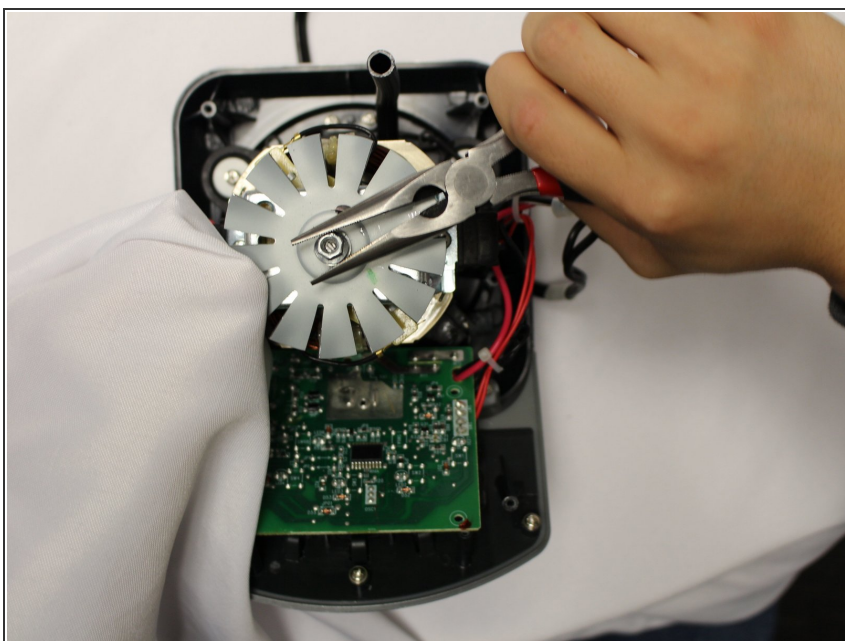
- Using the Phillips #1 screwdriver, remove the two screws (5 mm long, 3 mm wide) holding the power cord onto the motor cover.

Step 5



- Using the iFixit plastic opening tool, pry the motor cover off the general housing. Once it is loose, lift it up to remove it off the base.
- Slide the cover all the way to the end of the power cord.
- ⓘ Please note that the power cord does not completely come off the cover.

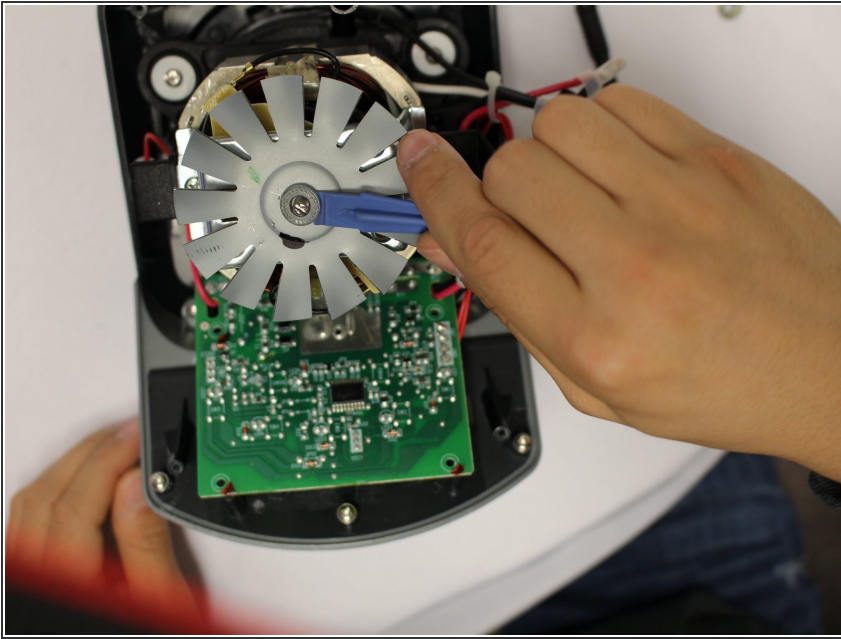
Step 6 — Fan



- Use a wrench or a pair of pliers to help remove the nut on top of the fan. Holding the fan itself will help make the process easier.

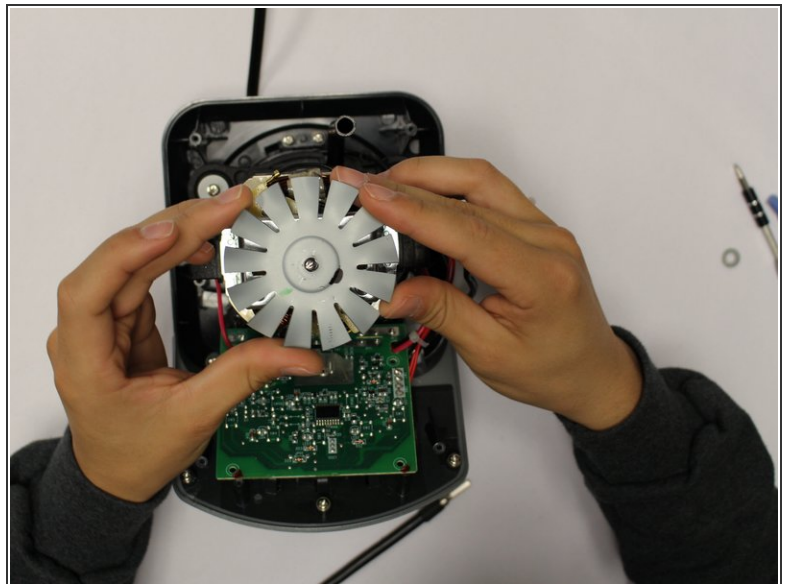
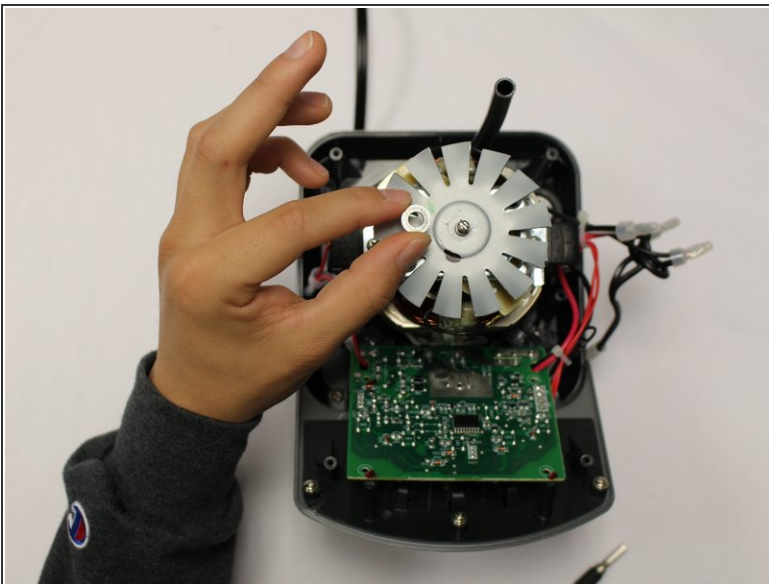
⚠ The fan blades are sharp. Handle with care. Using a paper towel or cloth while handling is recommended.

Step 7



- Use the plastic opening tool to loosen the washer.

Step 8



- Remove washer then slide the fan off the screw.
 - Replace the fan as needed.
- i** The fan has a keyed hole, thus it fits on the shaft in a specific way. Ensure you put it on correctly.

To reassemble your device, follow these instructions in reverse order.