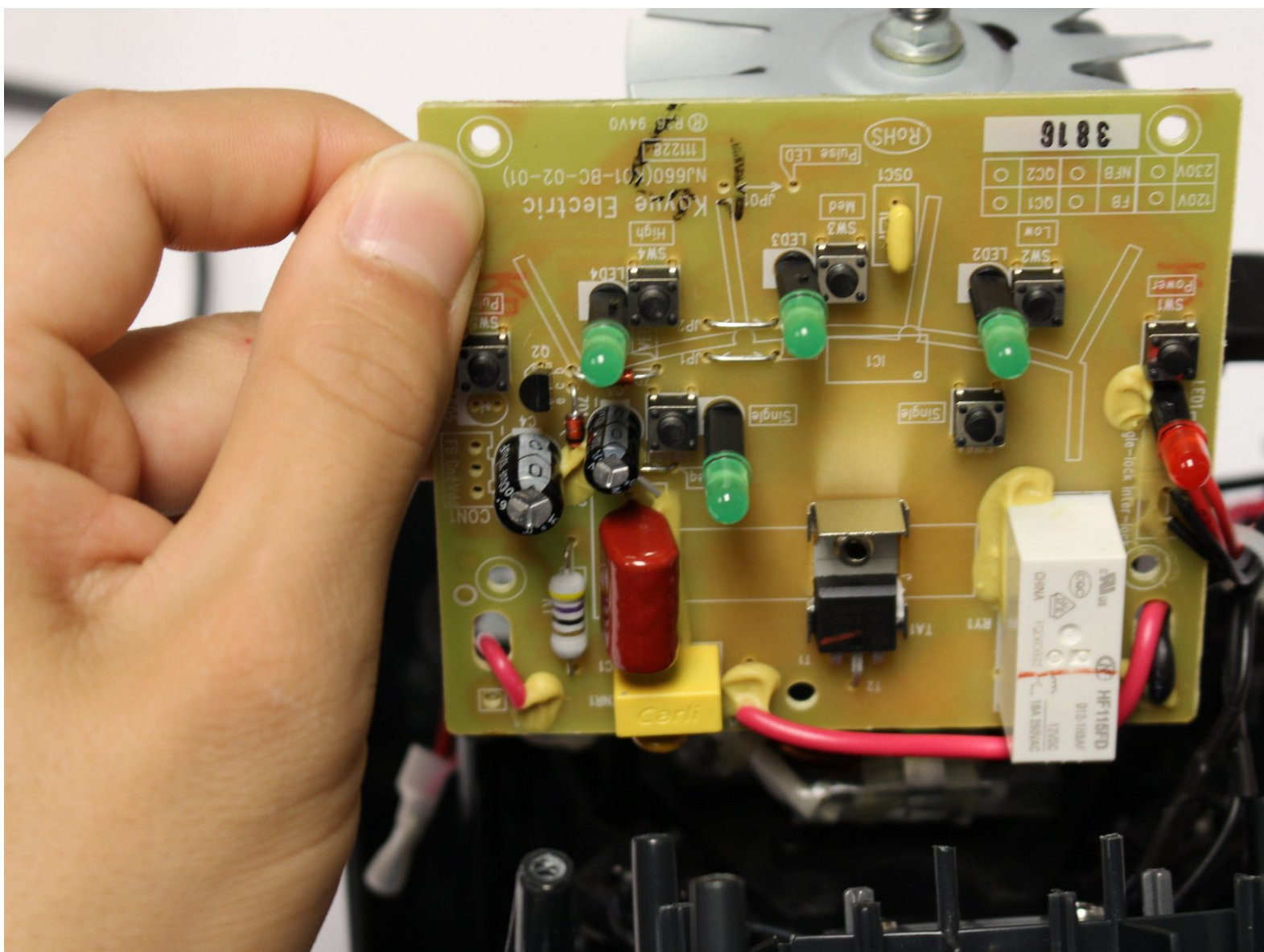




# Ninja Professional Blender BL660 LED Lights Replacement

Replacement of faulty LED lights under the button panel.

Written By: Andre Obot



## INTRODUCTION

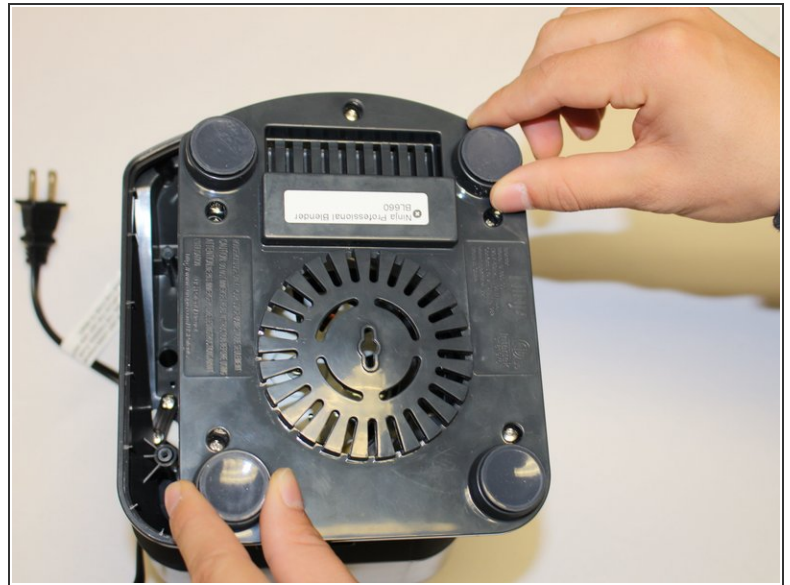
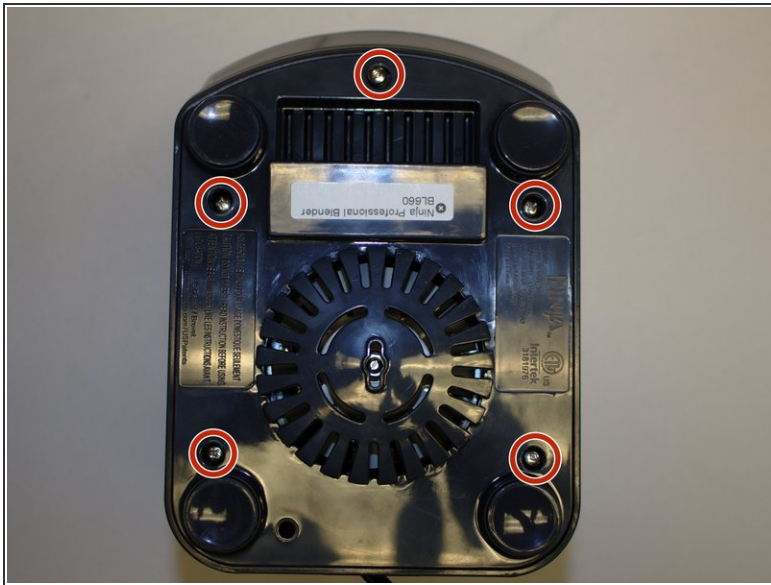
If your power button panel doesn't light up, your LED lights may be malfunctioning. This guide will help show the replacement of faulty LED lights under the button panel.

---

### TOOLS:

- [Phillips #1 Screwdriver](#) (1)
  - [iFixit Opening Tools](#) (1)
  - [Soldering Iron](#) (1)
  - [Utility Scissors](#) (1)
-

## Step 1 — Blender Base



- Using the Phillips #1 screwdriver, remove the 5 screws (13mm long, 6mm wide) holding the outer base.
- Lift the base up to remove it.

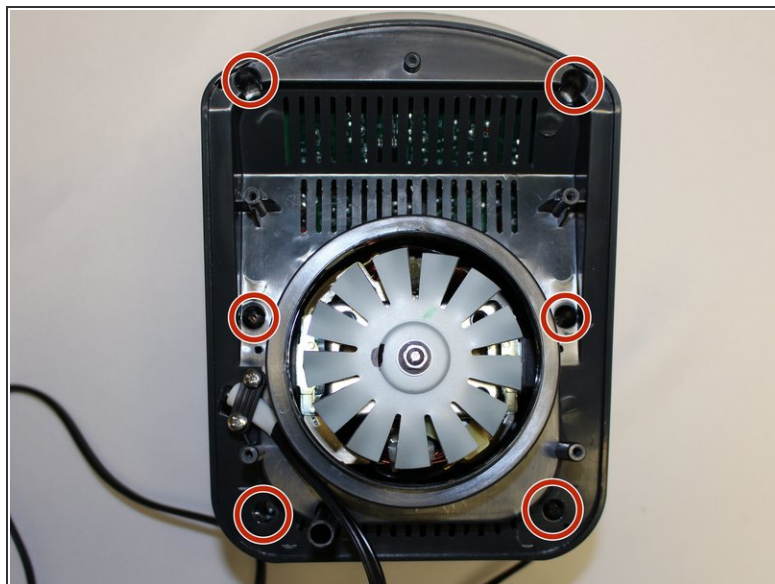
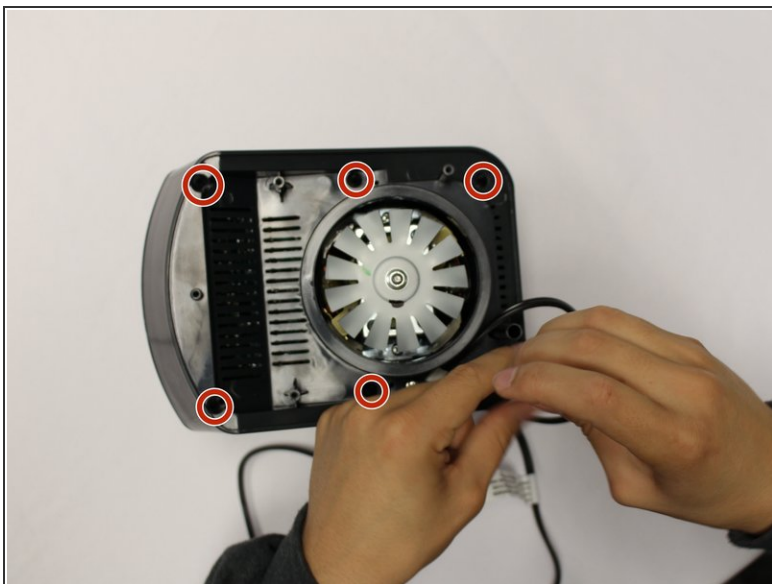


## Step 2



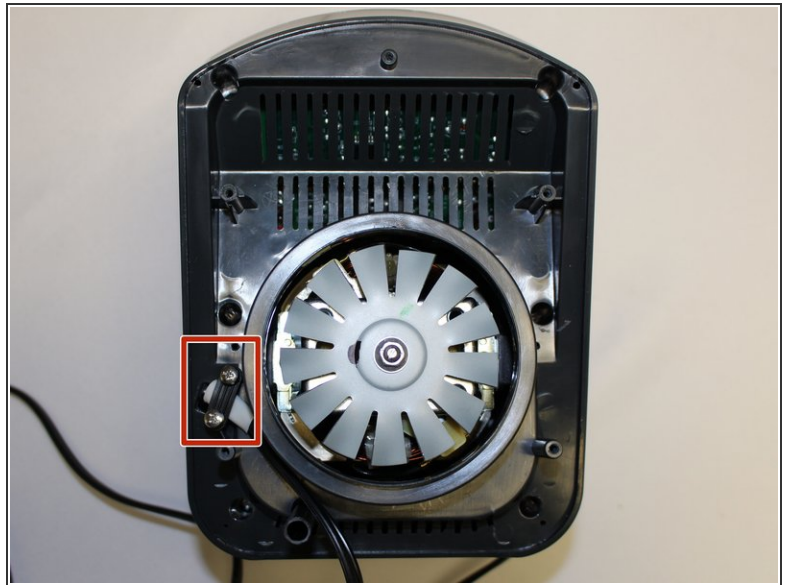
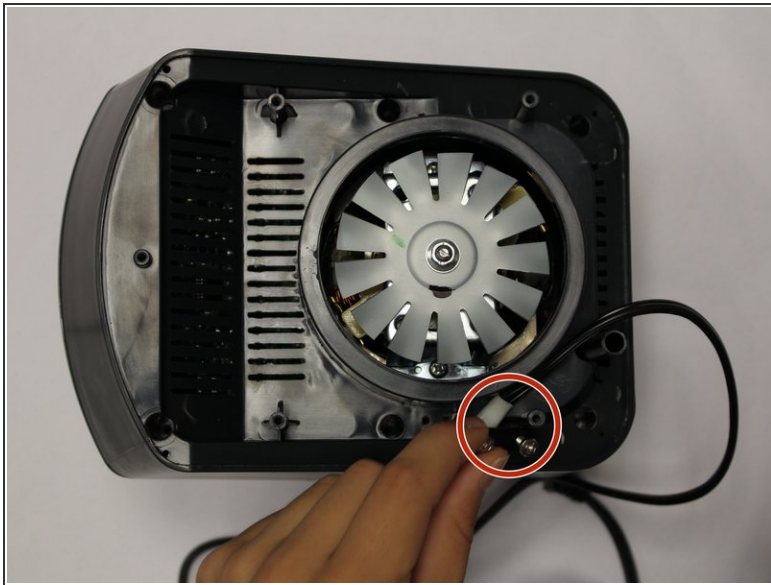
- Remove the midsection by pulling it up. If the section is stuck, use the iFixit plastic opening tool to pry it off.
- Pull the power cord through the mid-section opening.

## Step 3



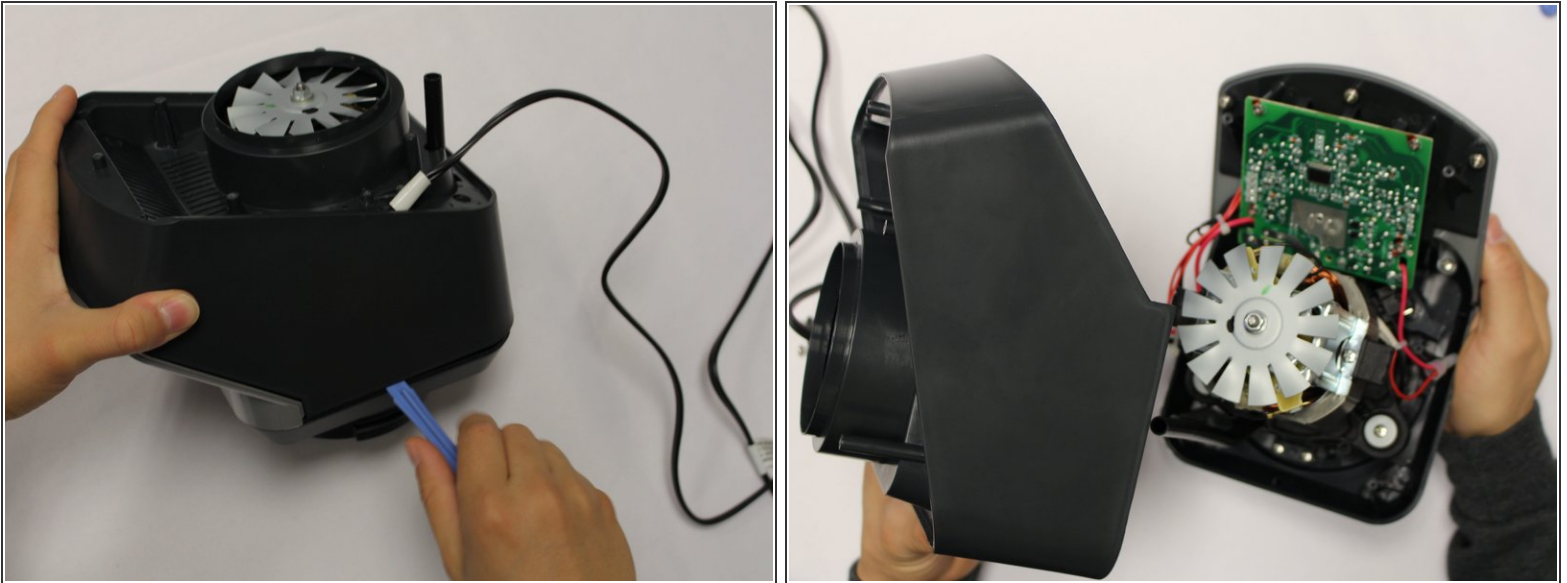
- Using the Phillips #1 screwdriver, remove the 6 screws (13 mm long, 6 mm wide).

## Step 4



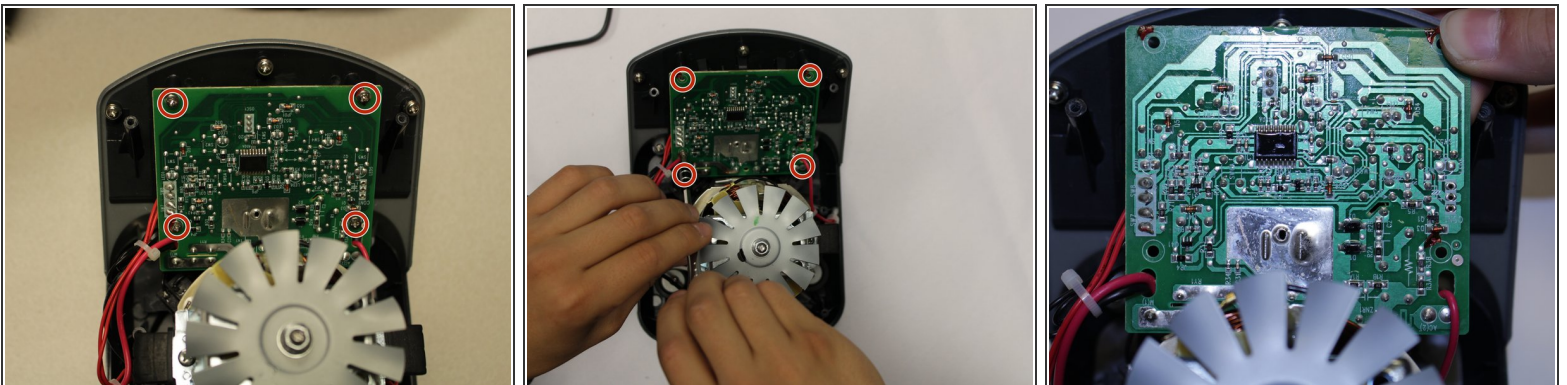
- Using the Phillips #1 screwdriver, remove the two screws (5 mm long, 3 mm wide) holding the power cord onto the motor cover.

## Step 5



- Using the iFixit plastic opening tool, pry the motor cover off the general housing. Once it is loose, lift it up to remove it off the base.
- Slide the cover all the way to the end of the power cord.
- ⓘ Please note that the power cord does not completely come off the cover.

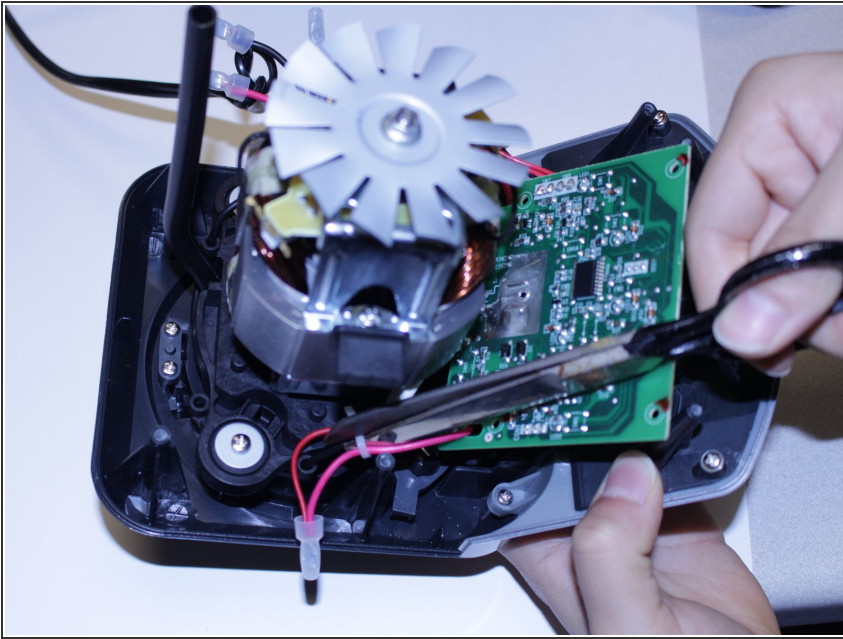
## Step 6 — LED Lights



- Using the Phillips #2 screwdriver, remove the four screws (10mm long, 5mm wide) on the circuit board.

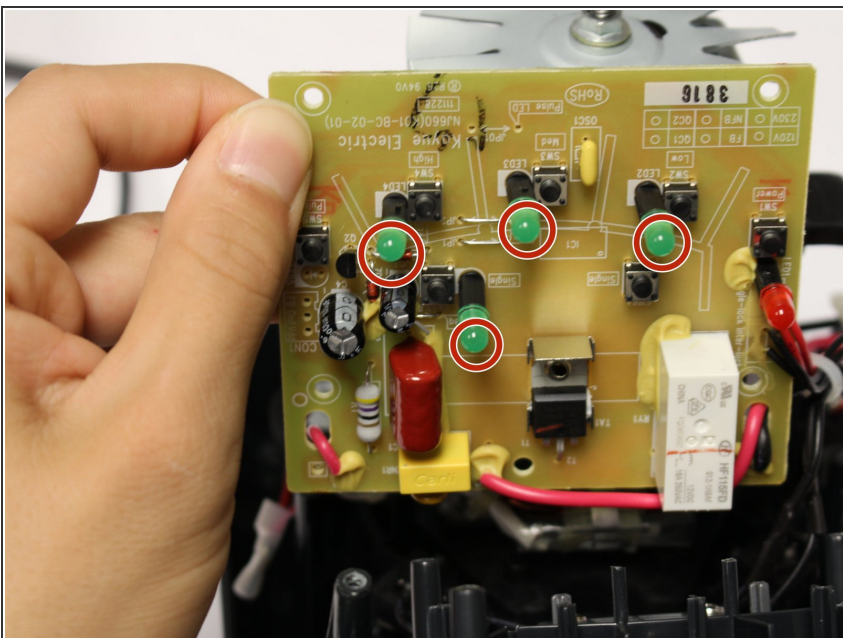


## Step 7



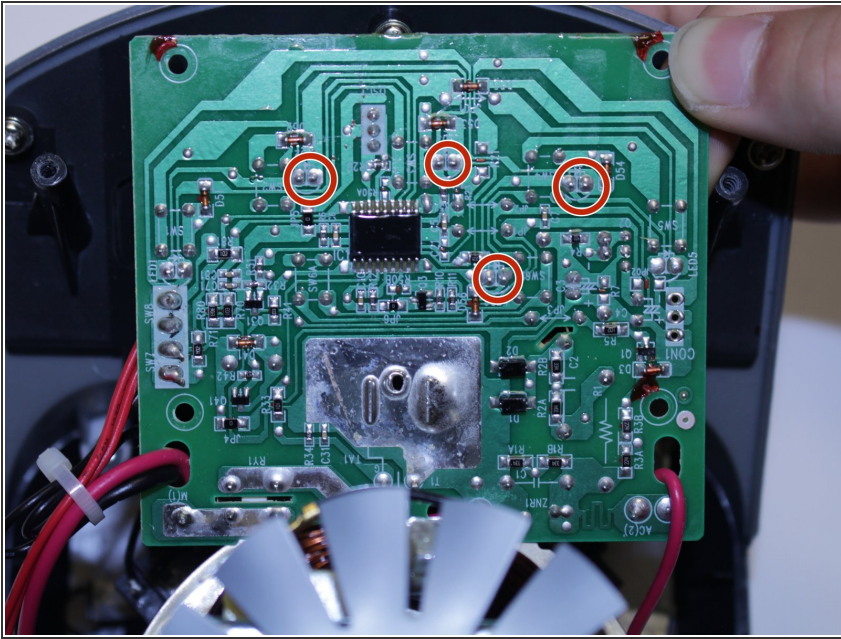
- To give the circuit board further range of motion, remove the pictured zip ties holding the cables.

## Step 8



- Locate the malfunctioning LED lights on the circuit board.

## Step 9



- Flip the circuit board to view the soldering connections of the LED lights and replace as needed.
- For instructions on soldering and desoldering reference iFixit's [guide](#).

To reassemble your device, follow these instructions in reverse order.