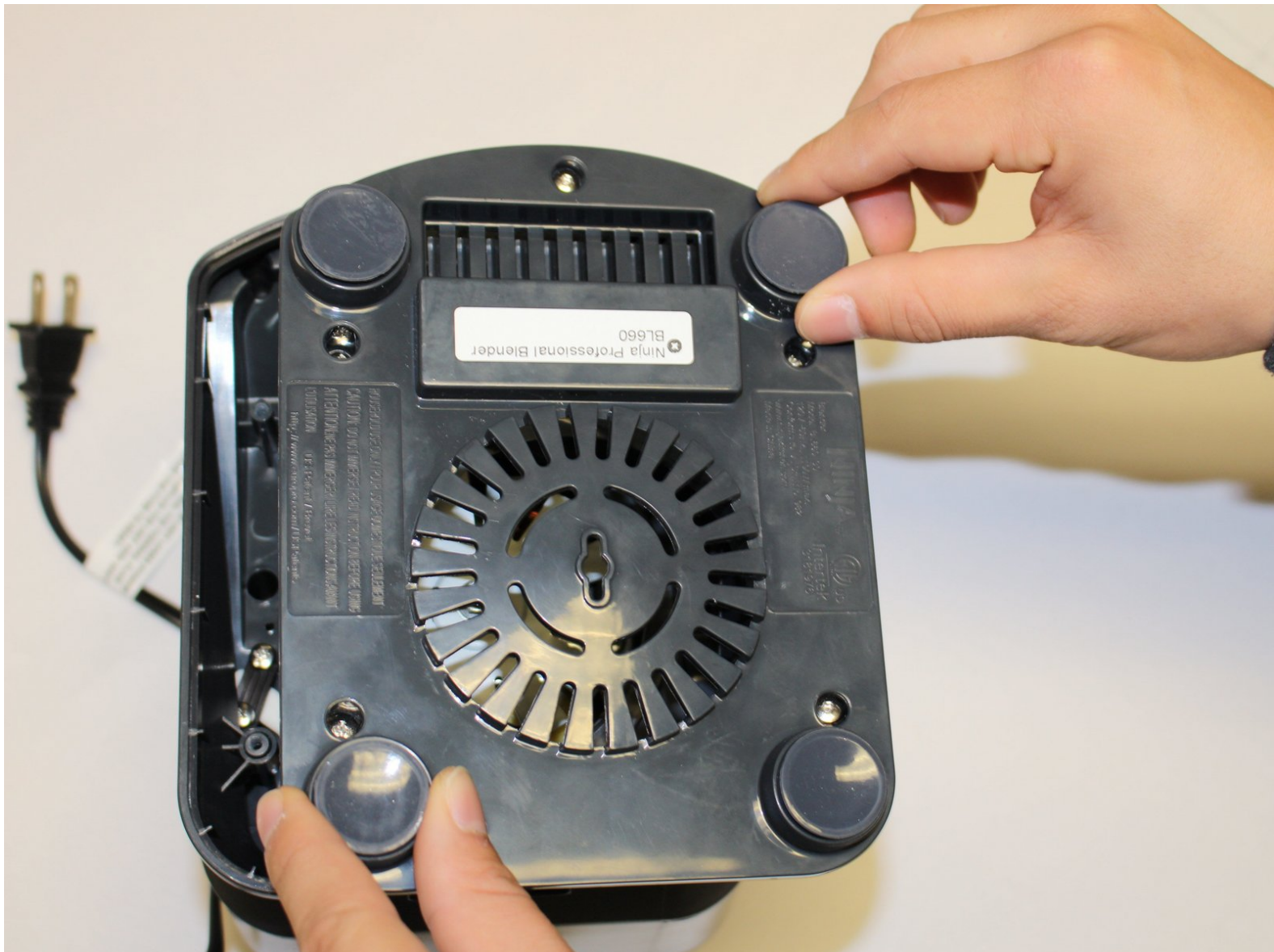




# Ninja Professional Blender BL660 Power Cord Replacement

Replacing a faulty or damaged power cord.

Written By: Andre Obot



---

## INTRODUCTION

If your blender doesn't power on, you may have a faulty or damaged power cord. This guide will show you how to replace it.

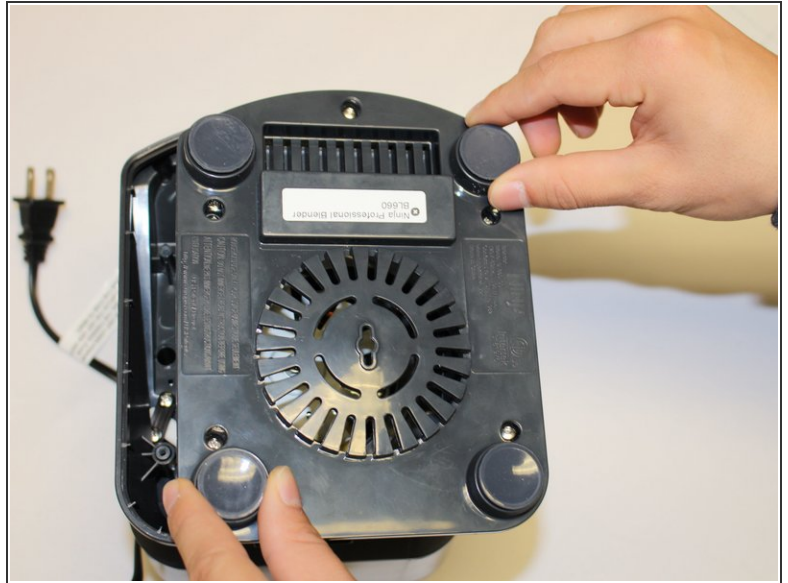
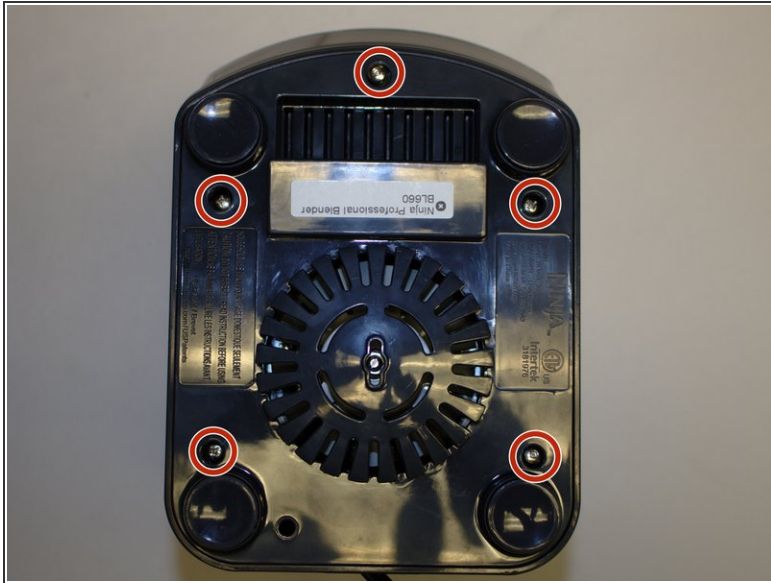
---



### TOOLS:

- [iFixit Opening Tools](#) (1)
  - [Phillips #1 Screwdriver](#) (1)
  - [Utility Scissors](#) (1)
  - [Soldering Iron](#) (1)
-

## Step 1 — Blender Base



- Using the Phillips #1 screwdriver, remove the 5 screws (13mm long, 6mm wide) holding the outer base.
- Lift the base up to remove it.

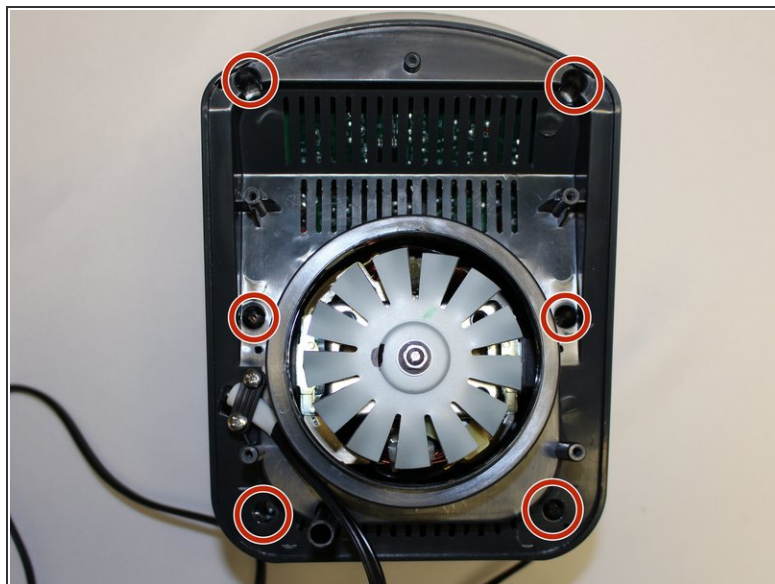
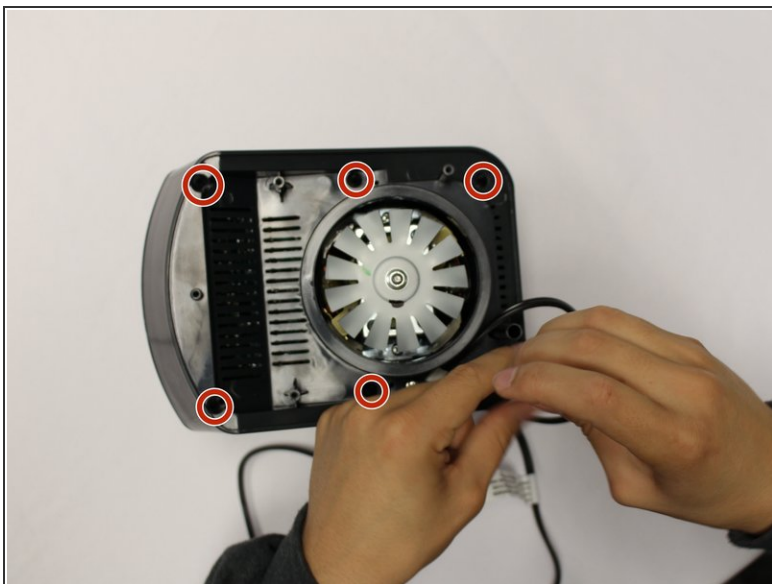


## Step 2



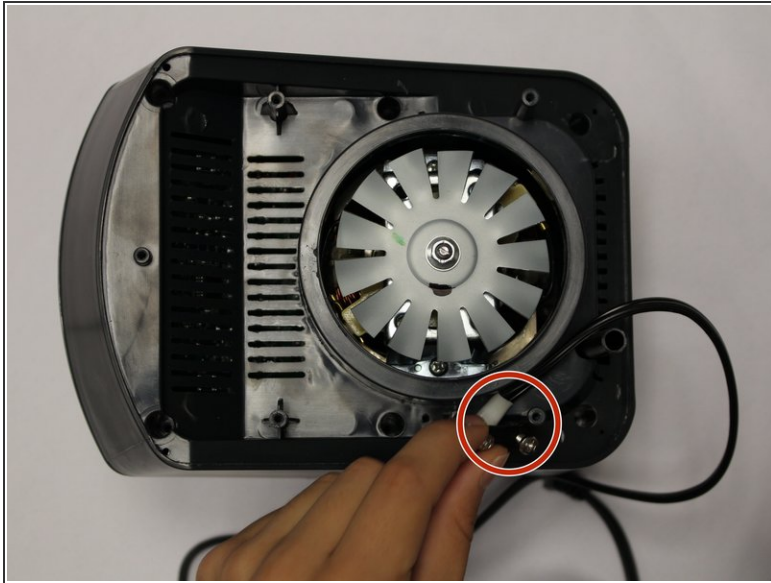
- Remove the midsection by pulling it up. If the section is stuck, use the iFixit plastic opening tool to pry it off.
- Pull the power cord through the mid-section opening.

## Step 3



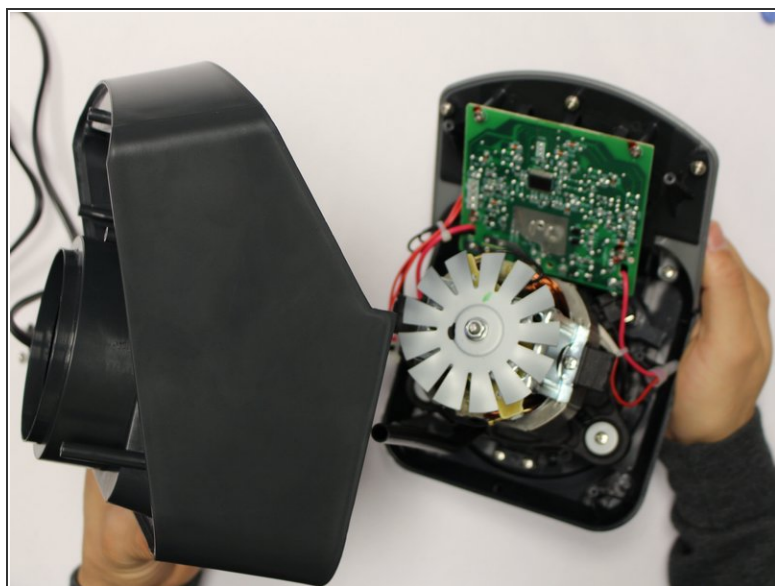
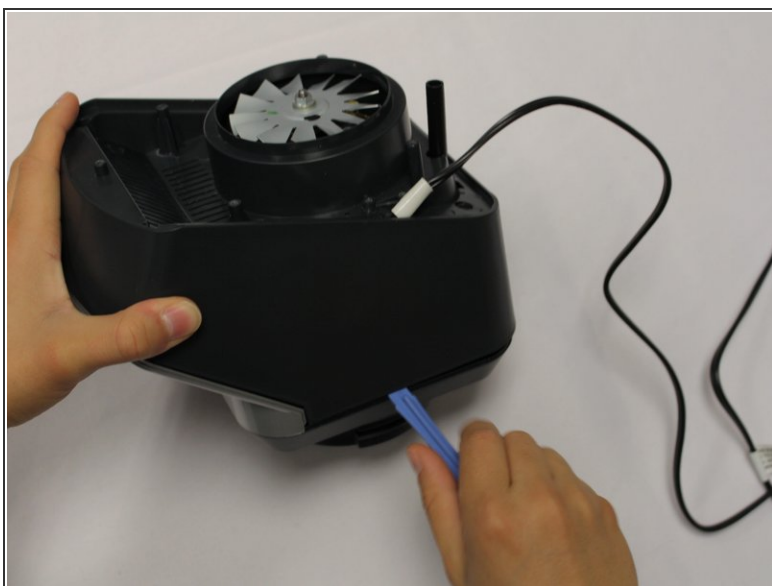
- Using the Phillips #1 screwdriver, remove the 6 screws (13 mm long, 6 mm wide).

## Step 4



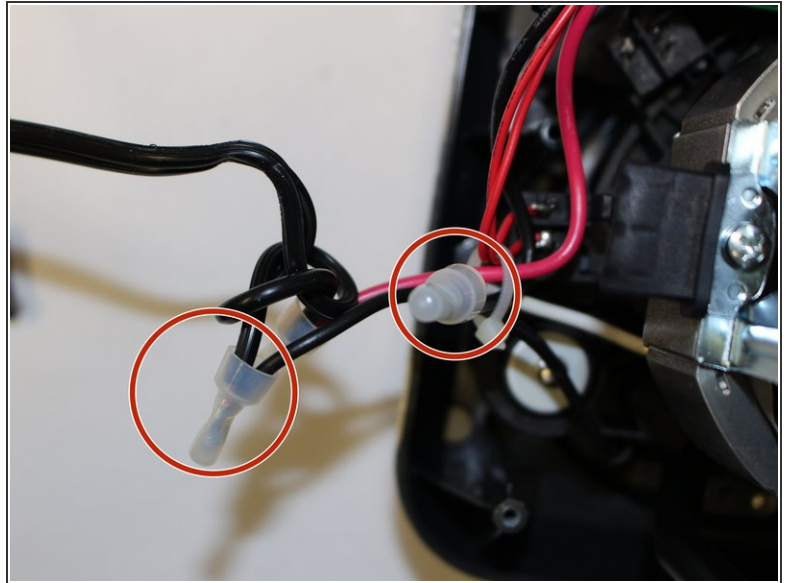
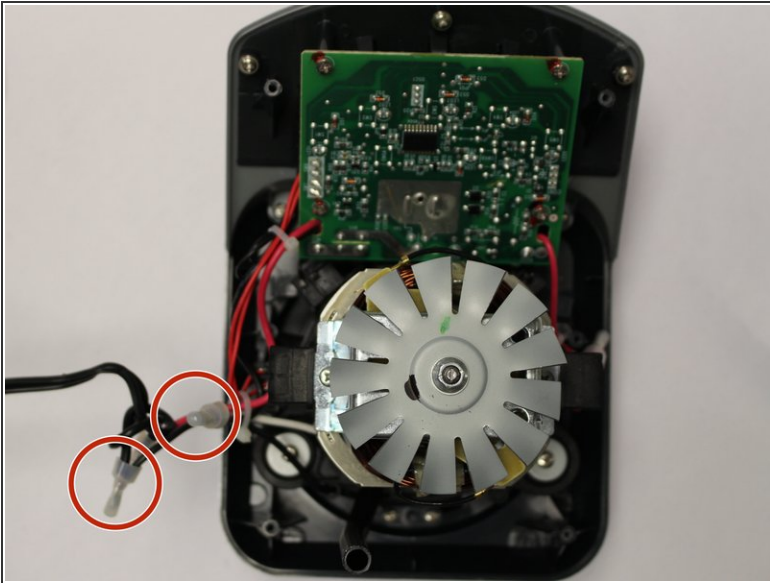
- Using the Phillips #1 screwdriver, remove the two screws (5 mm long, 3 mm wide) holding the power cord onto the motor cover.

## Step 5



- Using the iFixit plastic opening tool, pry the motor cover off the general housing. Once it is loose, lift it up to remove it off the base.
- Slide the cover all the way to the end of the power cord.
- ⓘ Please note that the power cord does not completely come off the cover.

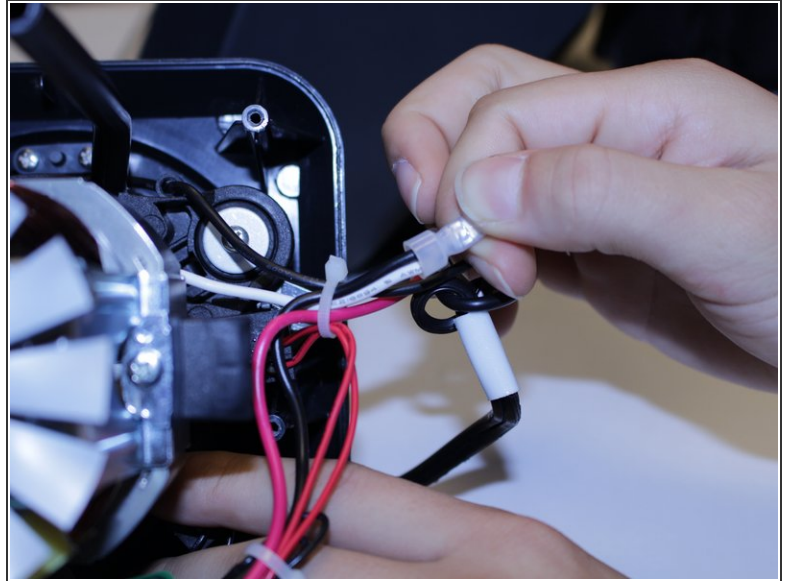
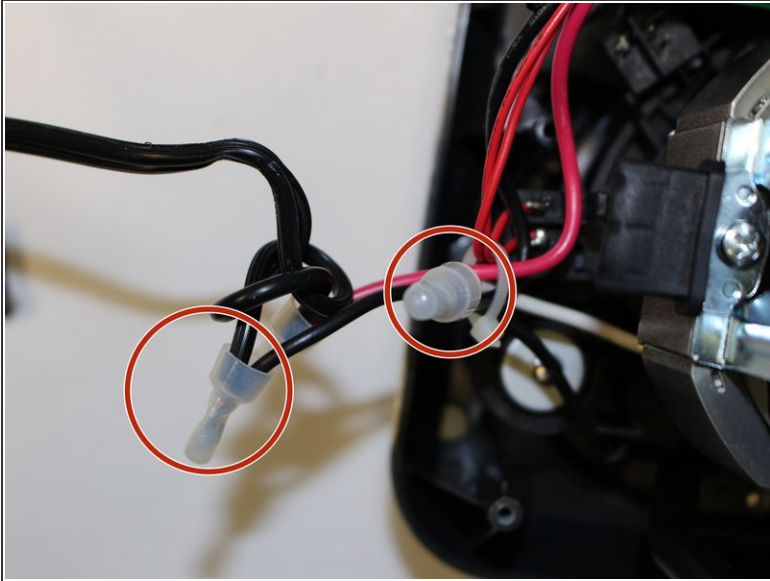
## Step 6 — Power Cord



- Check the connection between the power cord and the wires coming from the circuit board.

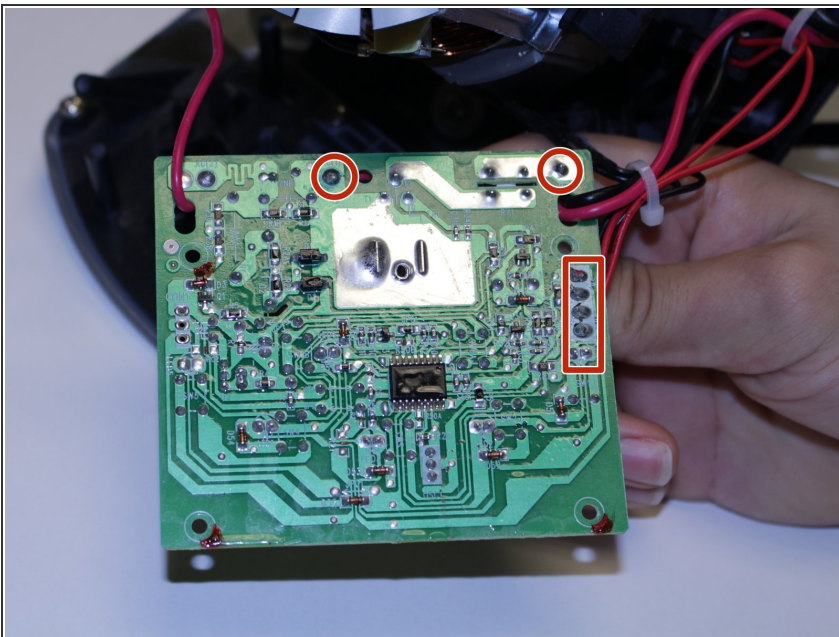


## Step 7



- Remove the plastic caps on the wire connectors with your hands.
- Ensure that the connections are not loose, corroded or desoldered.
- If the connections are desoldered, loose or corroded, re-solder them using the iFixit [soldering guide](#).

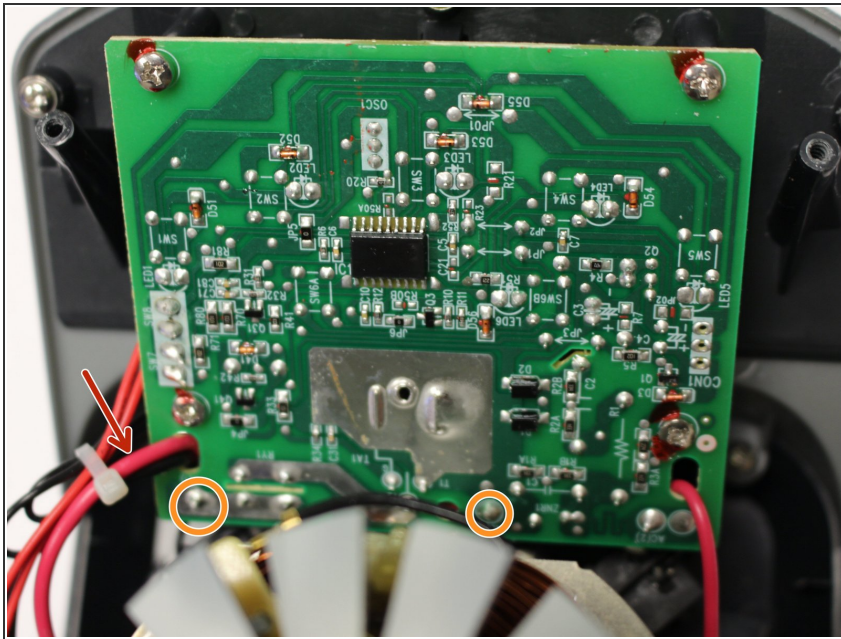
## Step 8



- If the connections in the preceding step are good, check the connection of the wires to the circuit board.
- If any of the connections are loose or damaged, the blender might not be getting power.



## Step 9



- Re-solder the connections using the [iFixit Soldering guide](#).
  - The red arrow shows where the wires enter the circuit board.
  - The orange circle shows where the black ground wire is soldered to the board and the blue circle shows where the red power wire is soldered to the board.
- ⓘ Make sure you check the correct solder as the wires are routed differently.

To reassemble your device, follow these instructions in reverse order.