



Ninja Professional Blender BL660 Suction Cups on Base Replacement

Replacing damaged suction cups.

Written By: Hernan Mendoza



INTRODUCTION

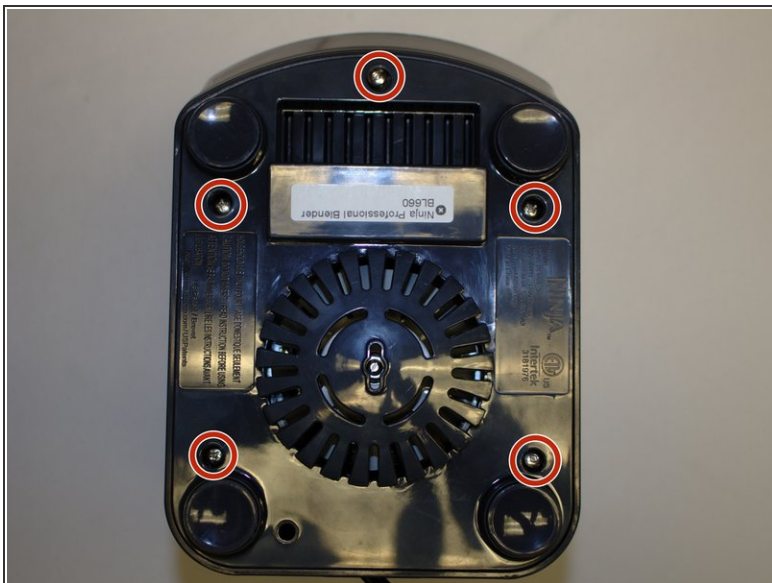
If the blender is too loud, the suction cups may be damaged or loose. This guide will help you to replace damaged suction cups.



TOOLS:

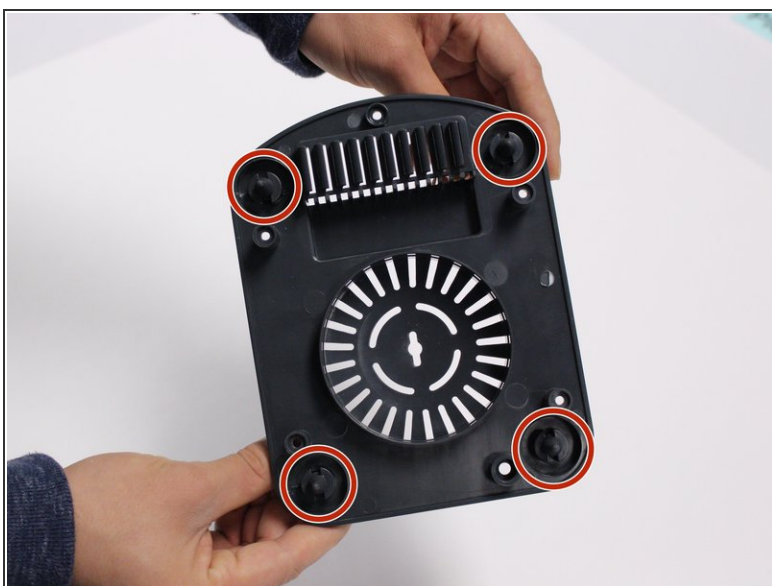
- [Phillips #1 Screwdriver](#) (1)
 - [iFixit Opening Tools](#) (1)
-

Step 1 — Suction Cups on Base



- Using the Phillips #1 screwdriver, remove the 5 screws holding the outer base.
- Lift the base up to remove it.

Step 2



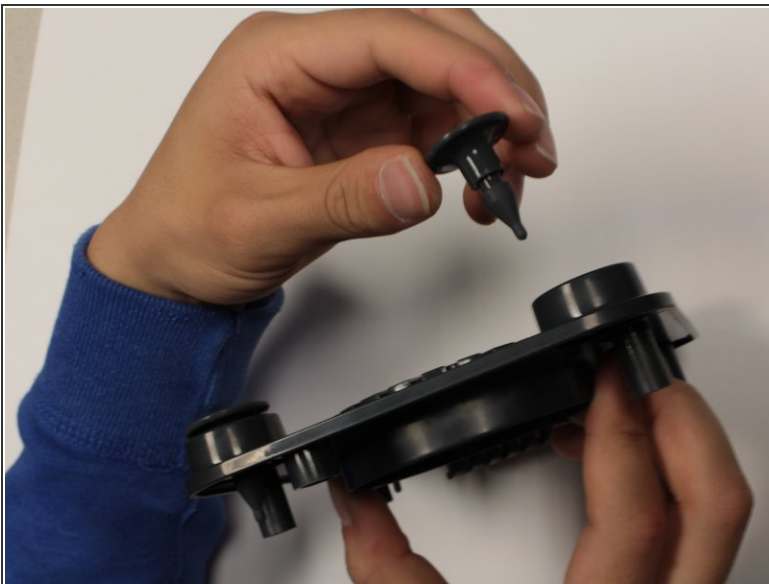
- Turn the base panel upside down to reveal the suction cup feet.

Step 3



- Push the stopper on the suction cup foot through the bottom panel using the iFixit plastic opening tool.

Step 4



- Once stopper has passed through the bottom panel, pull suction cup foot out.
 - Replace suction cup feet as needed.
- i** Ninja does not sell suction cup feet. You will need to obtain them from other third party vendors.

To reassemble your device, follow these instructions in reverse order.