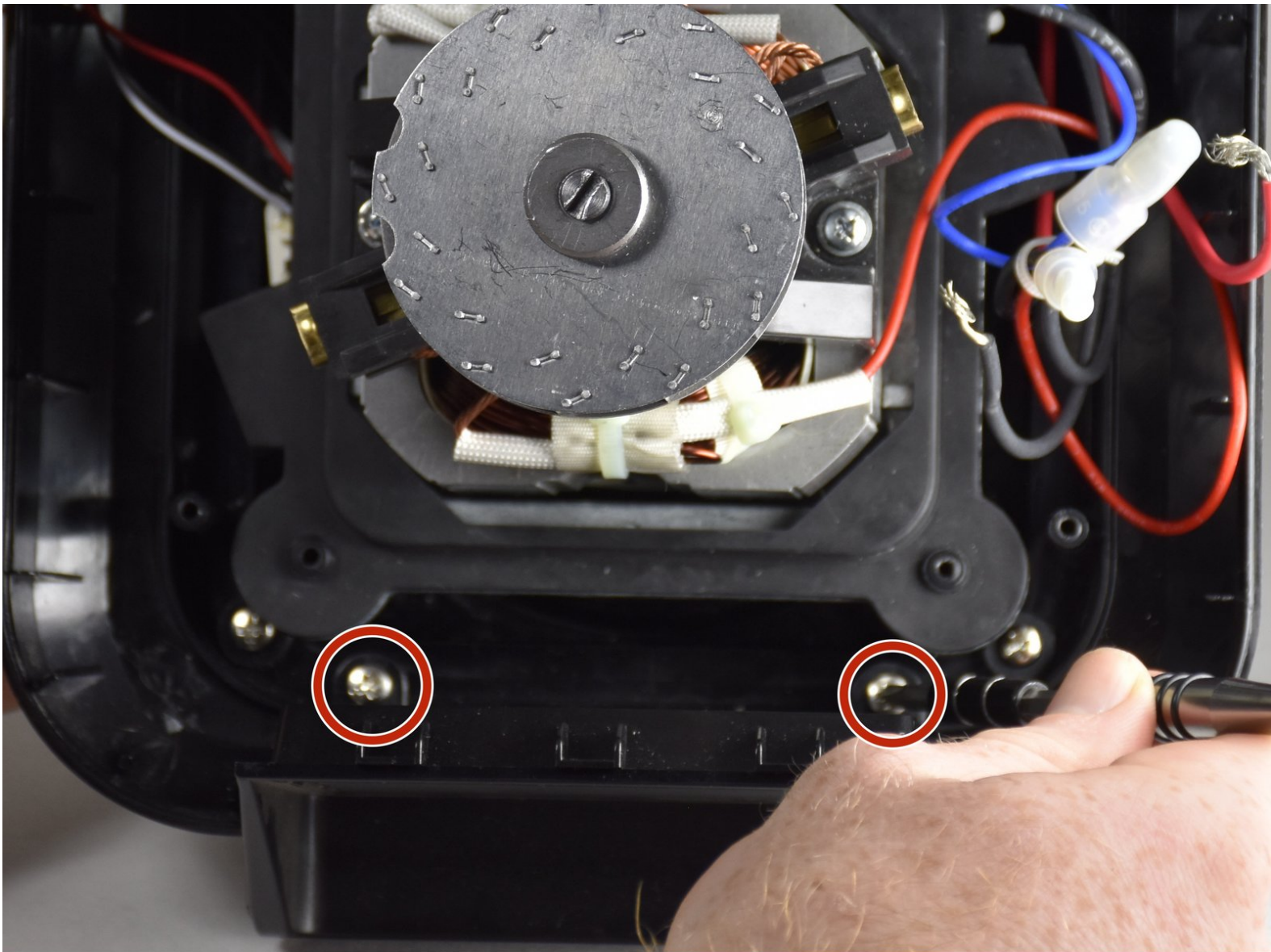




Ninja Ultima BL810 Vent Replacement

This guide will demonstrate how to remove the plastic vent.

Written By: Ryan James Gilroy



INTRODUCTION

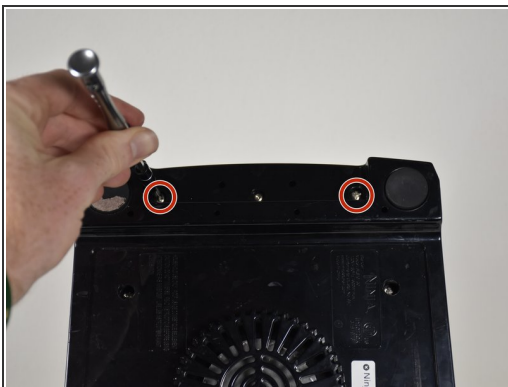
This guide will demonstrate how to remove the plastic vent.



TOOLS:

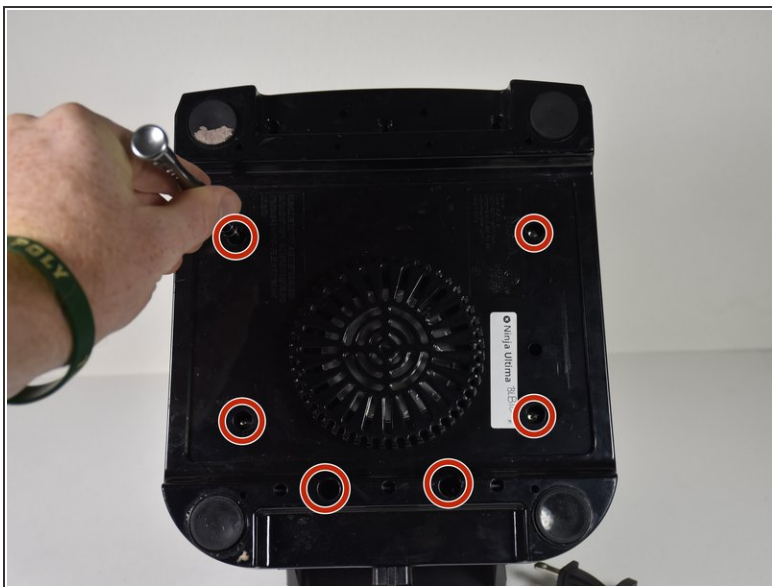
- [64 Bit Driver Kit](#) (1)
-

Step 1 — Power Plug



- Unscrew the Phillips #0 11mm screws.
- Unscrew the Torx Security #10 11mm screw.

Step 2



- Unscrew the six Phillips #2 11mm screws from the remainder of the bottom plate.
- Pull the bottom covering off of the blender.

Step 3



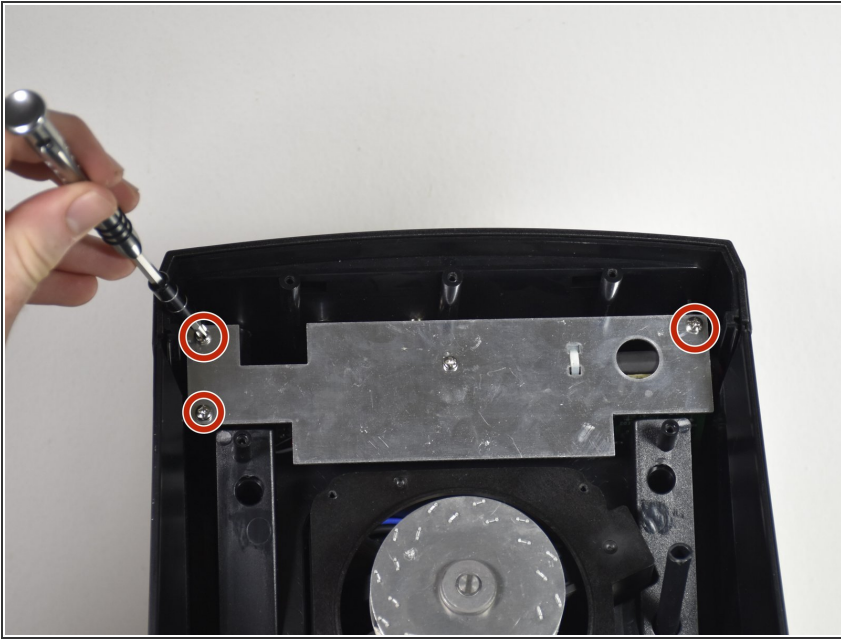
- Unscrew the two Phillips #2 9mm screws.
- Remove the plastic block.

Step 4



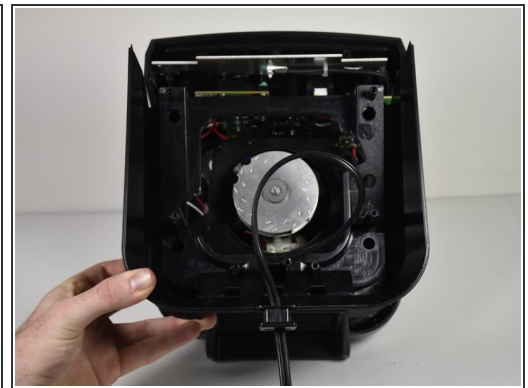
- Unscrew the four Phillips #2 11mm screws.
- Remove the plastic covers.
- ⓘ Removing the top cover and then rotating the bottom cover into the same orientation works best.

Step 5



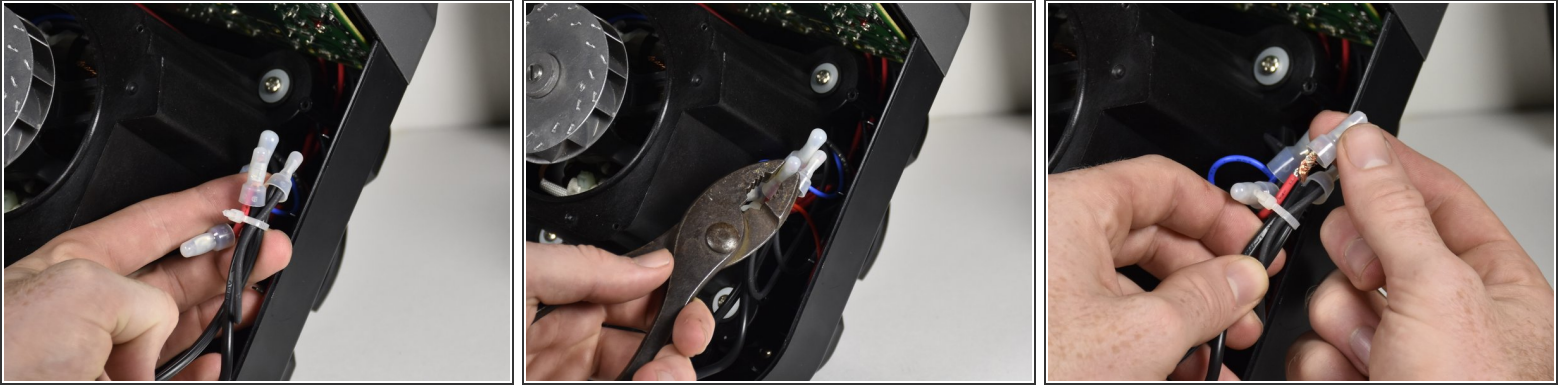
- Unscrew the three Phillips #2 9mm screws.
- ⓘ This metal plate doesn't need to be completely removed, just adjusted to the side to continue working.

Step 6



- Unscrew the four Phillips #2 11mm screws.
- Pull the power cord through as shown to create slack.
- Remove plastic casing by lifting upwards.

Step 7



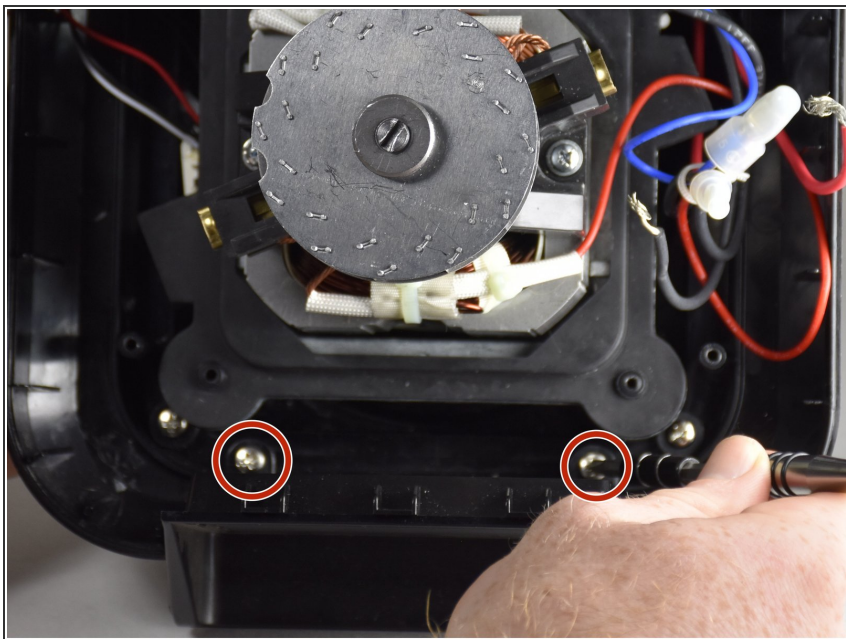
- Follow the power plug cords to find the right plastic caps.
- Squeeze the caps with pliers to loosen the grip.
- Pull the plastic caps off the twisted wires.

Step 8



- Untwist the two wires from each other and pull the zip tie off.

Step 9 — Vent



- Unscrew the 2 Phillips #2 9mm screws.

Step 10



- Grip the vent on either side and lift it straight in the upward direction.

To reassemble your device, follow these instructions in reverse order.