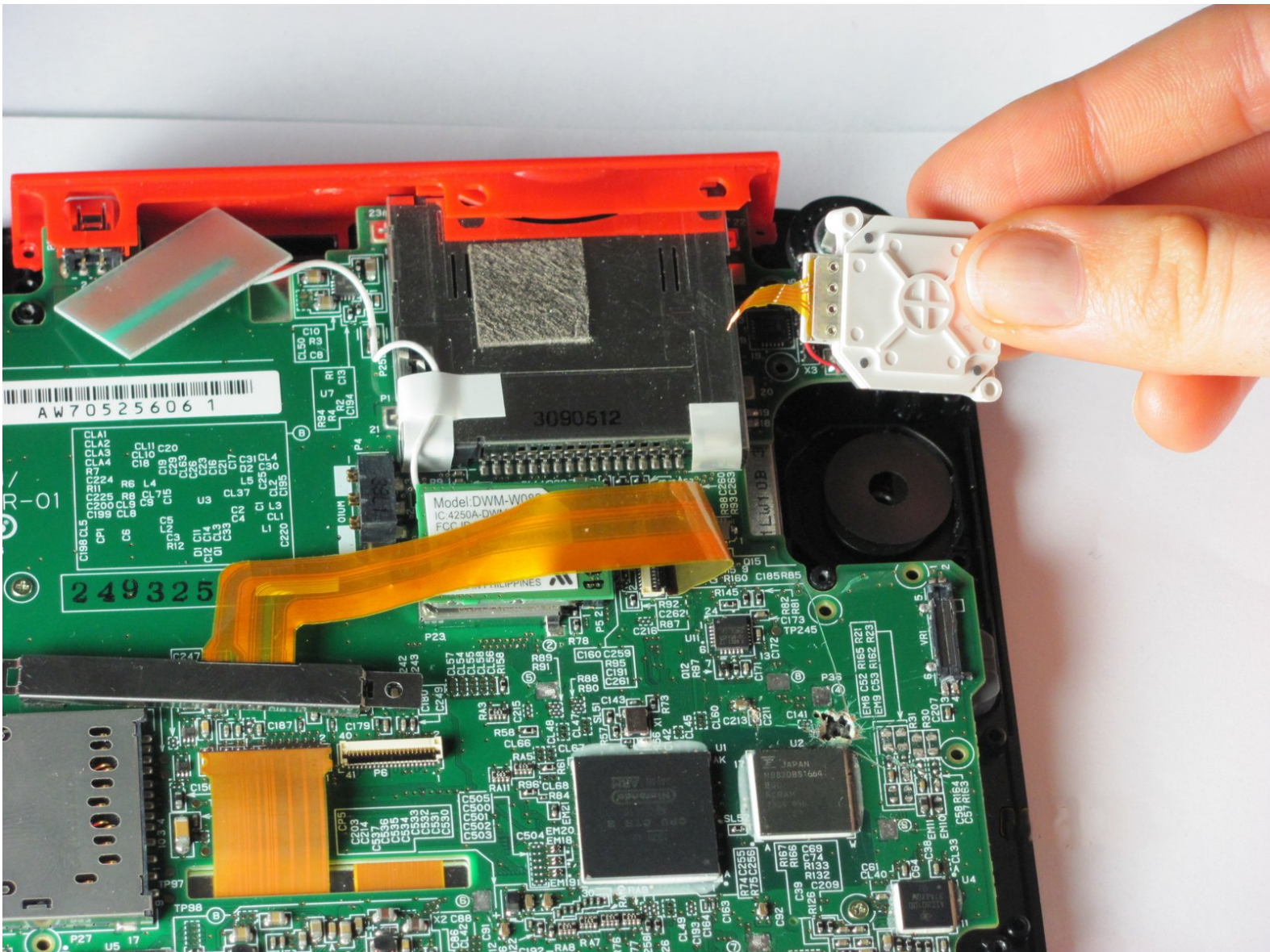




# Nintendo 2DS Joystick Replacement

This guide will accomplish the replacement of the joystick of the Nintendo 2DS.

Written By: Fina Beauchamp



---

## INTRODUCTION

We will teach you how to first remove the battery and back panel then access the joystick for repair or cleaning purposes.



### TOOLS:

- [Phillips #00 Screwdriver](#) (1)
  - [Tweezers](#) (1)
-

## Step 1 — Battery



- Remove the two Phillips screws securing the upper rear panel.
- ⓘ The screws will not completely detach from the back panel.

## Step 2



- Hinge the upper rear panel upwards and outwards to remove it.

## Step 3



- Remove the battery from its housing by lifting it up from the side closest to the outside edge.

## Step 4 — Rear Panel



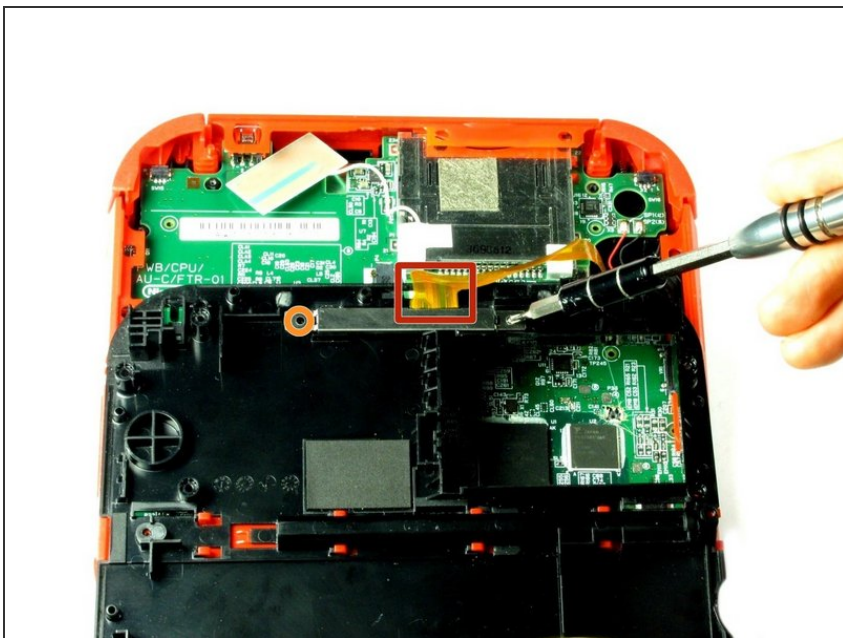
- Remove the ten Phillips screws attaching the rear panel.

## Step 5



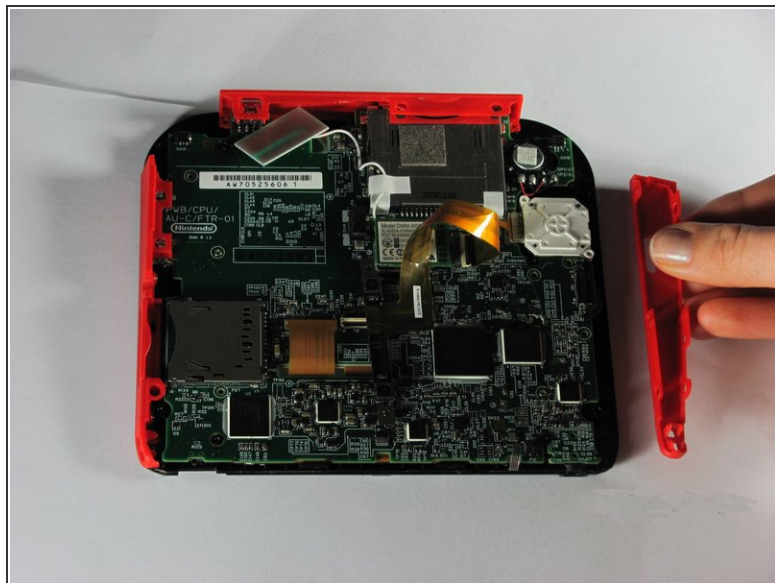
- i The rear panel is attached to the motherboard by a ribbon cable, so be careful not to lift the rear panel too far from the device.
- Carefully pull the rear panel straight up from the device.

## Step 6



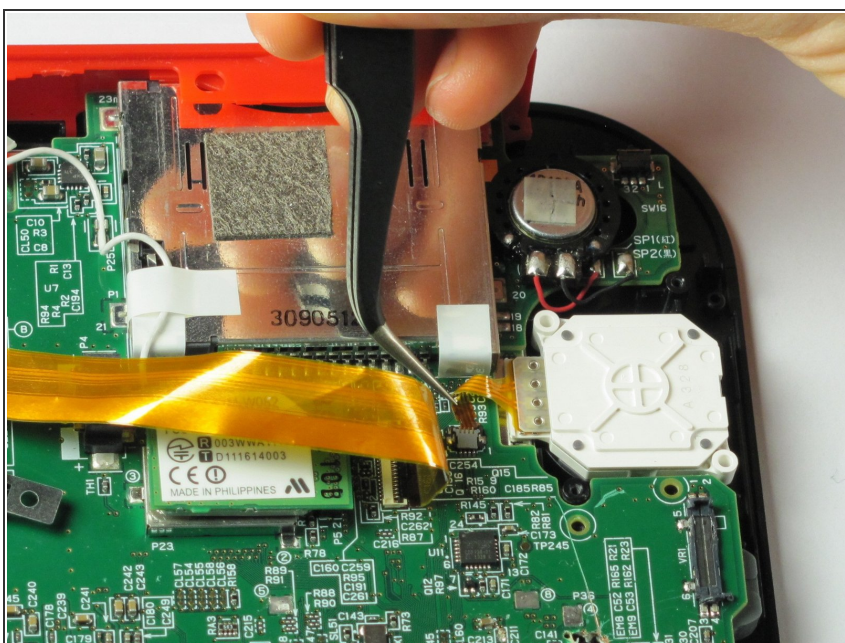
- Carefully flip the back panel over to locate the attached ribbon cable.
- Remove the two Phillips screws attaching the ribbon cable to the rear panel.
- i Take the opportunity to remove the Left and Right triggers, they have hinges that may break and springs that may jump away.

## Step 7 — Joystick



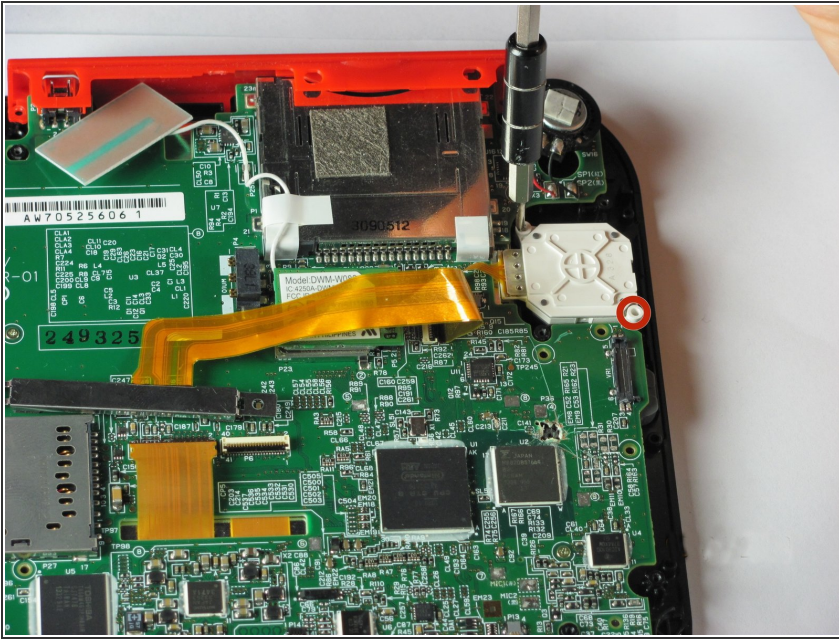
- Remove the trigger button on the top right corner by pulling upwards and outwards.
- Remove the right red side panel by pulling outwards.

## Step 8



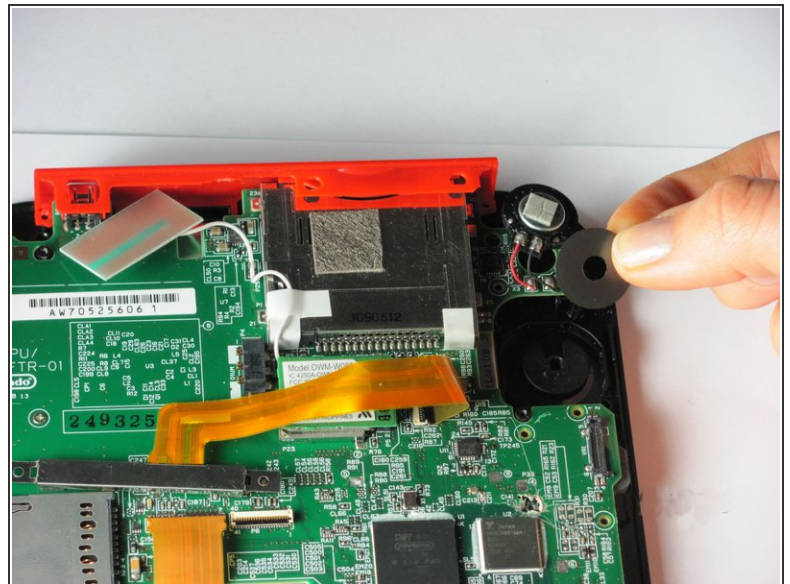
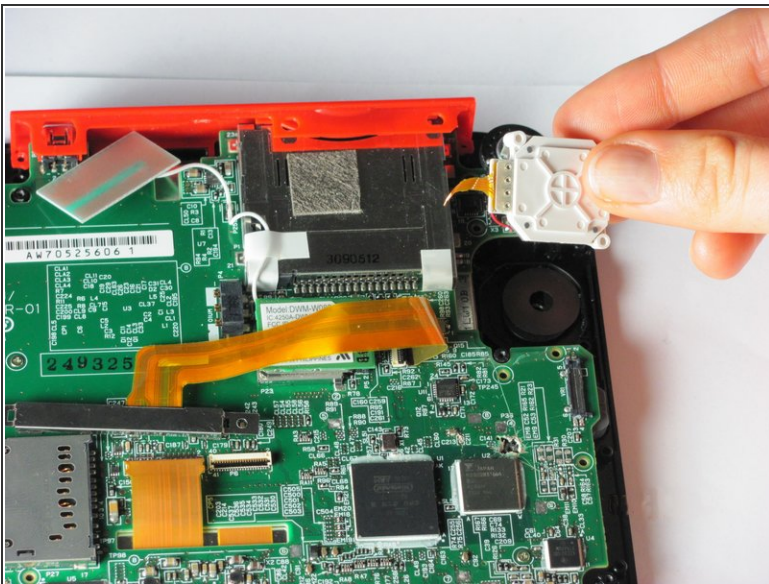
- Use a spudger to lift the gray locking lever on the joystick ribbon cable ZIF connector. Pry straight up from the motherboard on the side of the connector opposite the cable.
- Gently slide the cable straight out of the connector.

## Step 9



- Remove the two Phillips corner screws holding the white joystick cover.

## Step 10



- Remove the joystick cover. It should detach with little force.
- Remove the joystick washer under the joystick cover.

To reassemble your device, follow these instructions in reverse order.