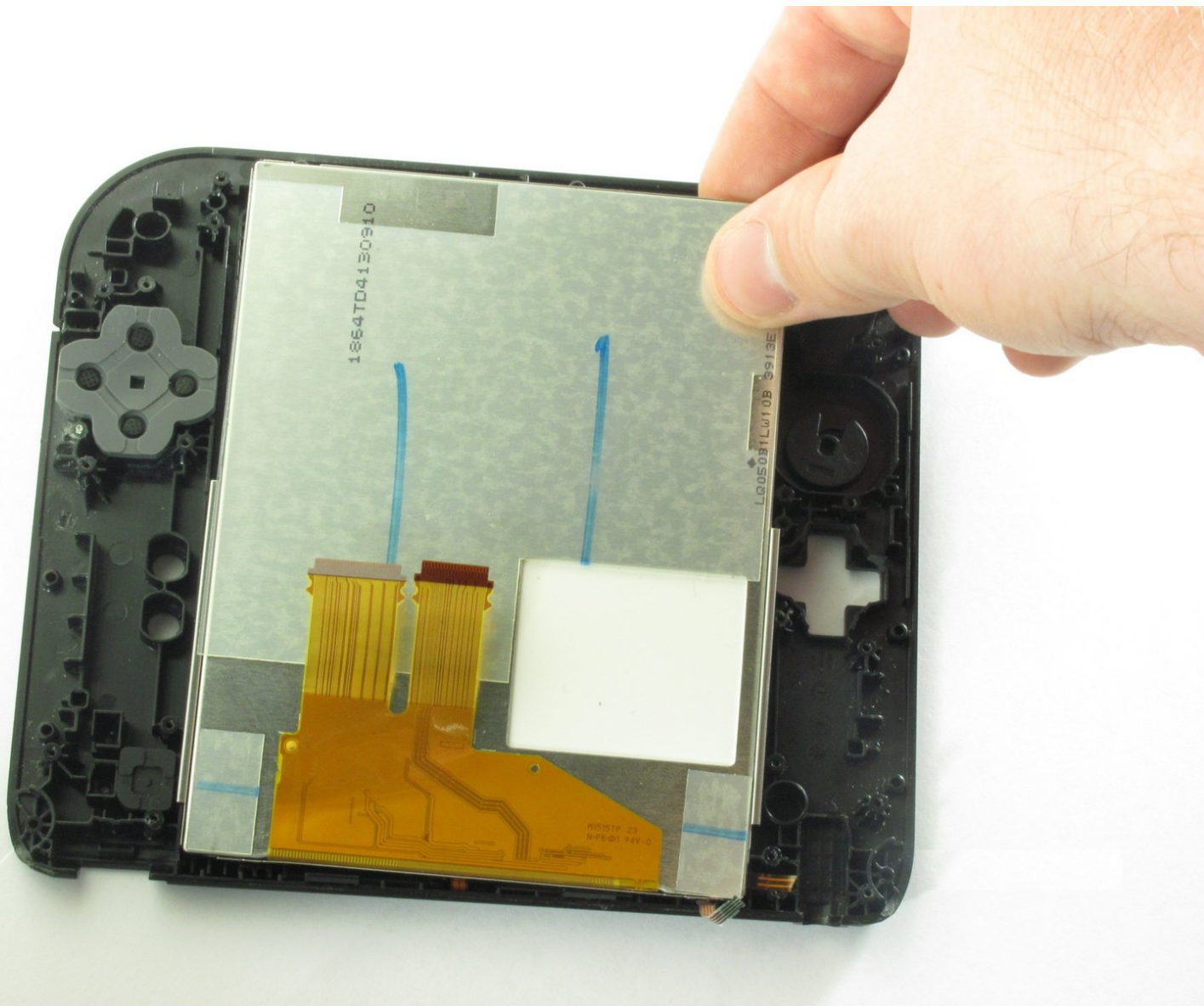




# Nintendo 2DS Screen Replacement

This guide will accomplish the replacement of the screen of the Nintendo 2DS.

Written By: Fina Beauchamp



# INTRODUCTION

This guide shows how to access the Nintendo 2DS screen for repair and cleaning purposes.



## TOOLS:

- [Phillips #00 Screwdriver](#) (1)
- [Nylon-Tip Reverse Tweezers](#) (1)



## PARTS:

- [1 x 2DS LCD](#) (1)

## Step 1 — Battery



- Remove the two Phillips screws securing the upper rear panel.
- ⓘ The screws will not completely detach from the back panel.

## Step 2



- Hinge the upper rear panel upwards and outwards to remove it.

### Step 3



- Remove the battery from its housing by lifting it up from the side closest to the outside edge.

### Step 4 — Rear Panel



- Remove the ten Phillips screws attaching the rear panel.

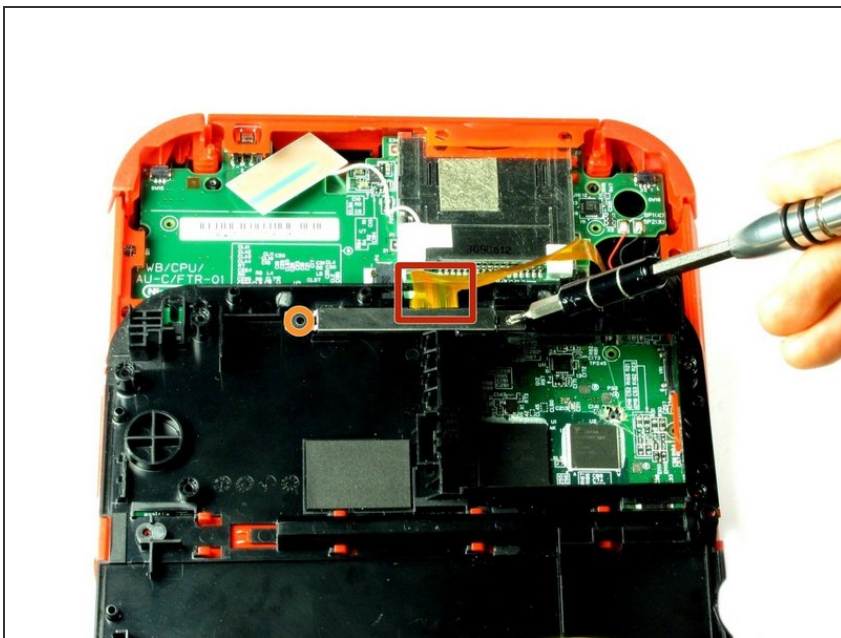


## Step 5



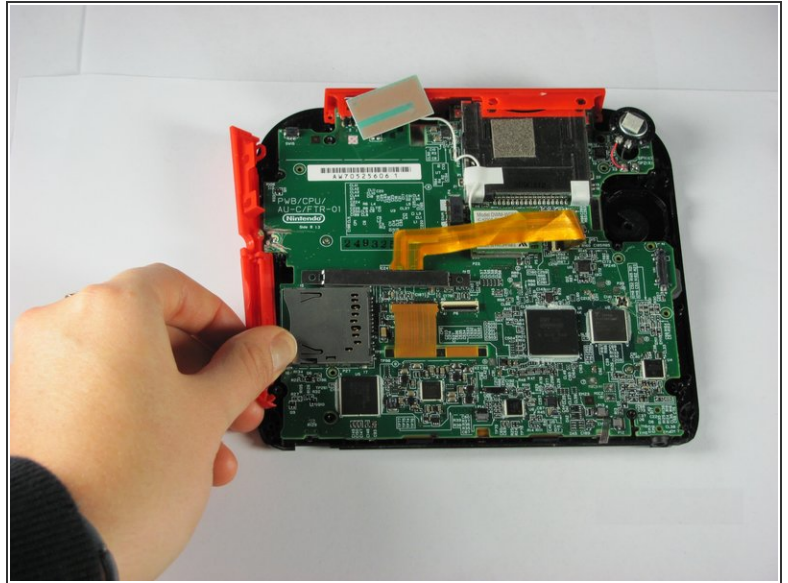
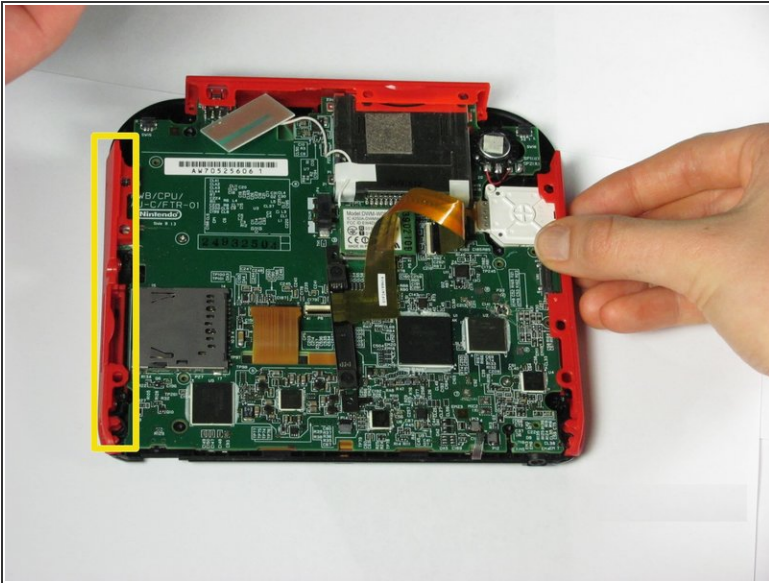
- i The rear panel is attached to the motherboard by a ribbon cable, so be careful not to lift the rear panel too far from the device.
- Carefully pull the rear panel straight up from the device.

## Step 6



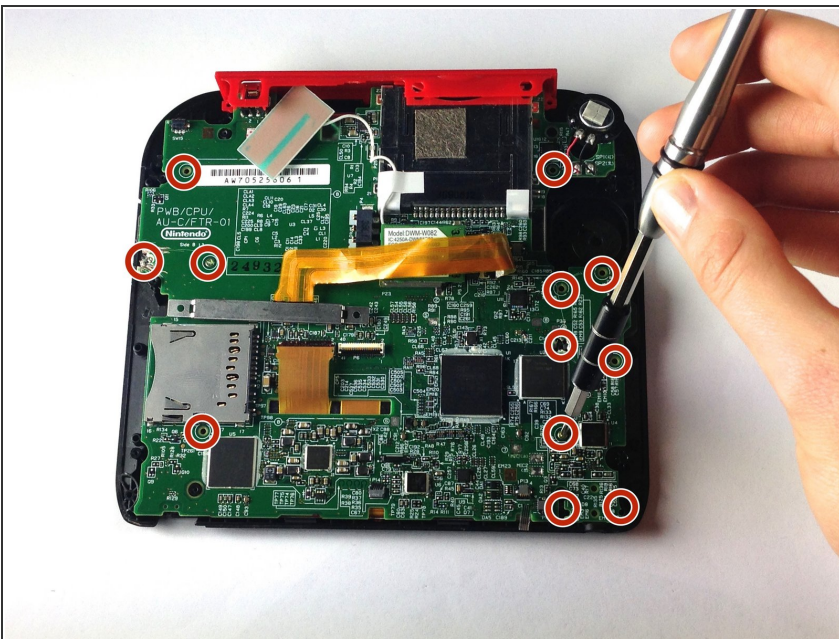
- Carefully flip the back panel over to locate the attached ribbon cable.
- Remove the two Phillips screws attaching the ribbon cable to the rear panel.
- i Take the opportunity to remove the Left and Right triggers, they have hinges that may break and springs that may jump away.

## Step 7 — Remove Side Panels



- Hold the side panels of the device's case with your fingers and pull outward to remove them.
- ⓘ The panels should come off easily with little force required.

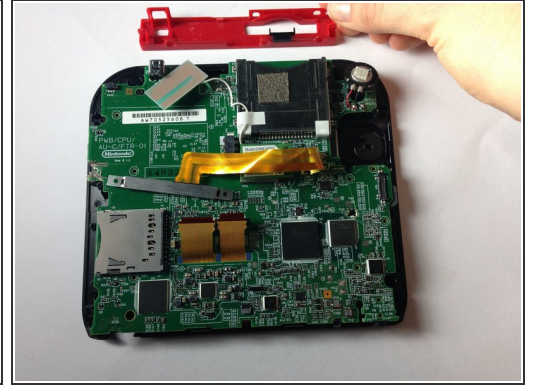
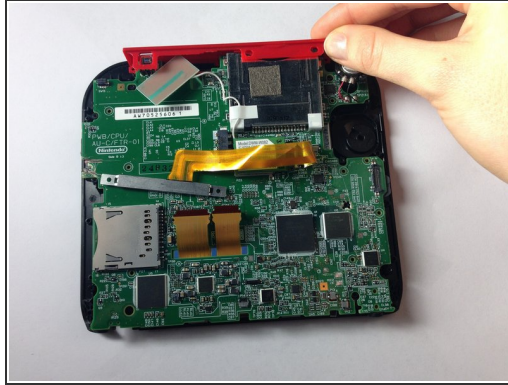
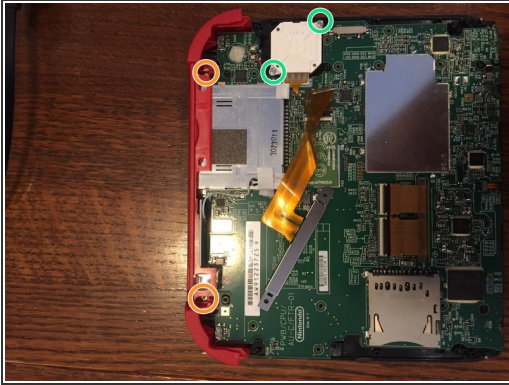
## Step 8 — Unscrew Motherboard



- Remove the 12 brass-colored Phillips screws securing the main board.
- ⚠ Be **very** careful not to strip any of these screws. Stripping can occur very easily, and may make replacement of the motherboard impossible.

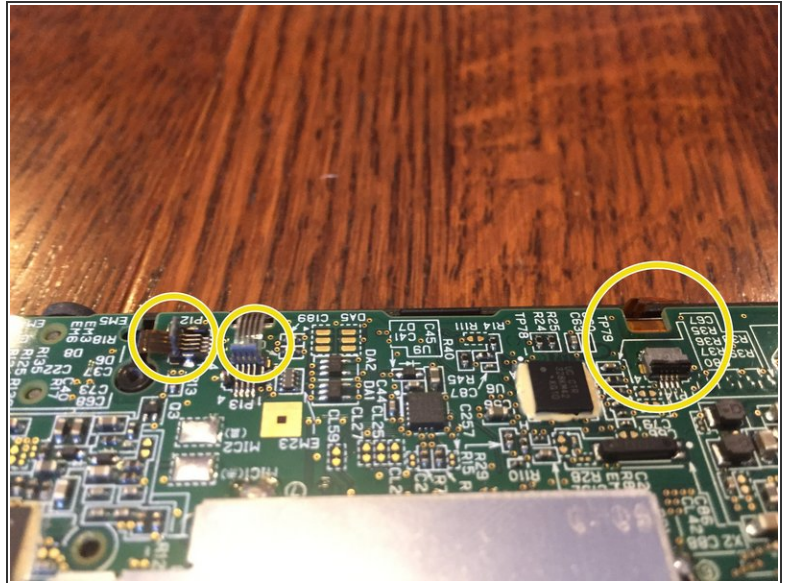
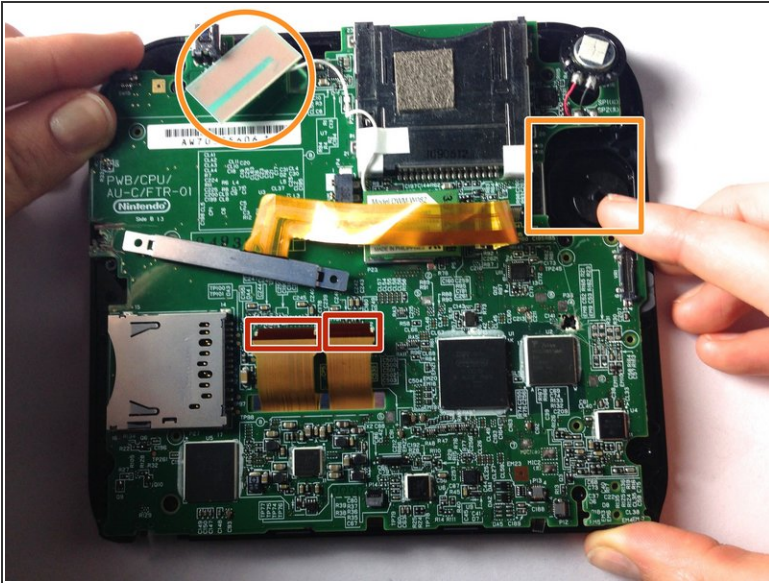


## Step 9 — Remove Top Panel



- ❗ The top panel can only be removed when the mother board is not secured.
- There are two additional screws located on the top rail. Remove these to fully remove the buttons and top rail.
- There are two screws holding down the joystick base that must be removed. (Be careful of the ribbon cable—it stays connected!)
- Hold the top panel with your fingers and pull away from the device to remove it.
- ❗ The top panel should come off easily, with very little force applied.

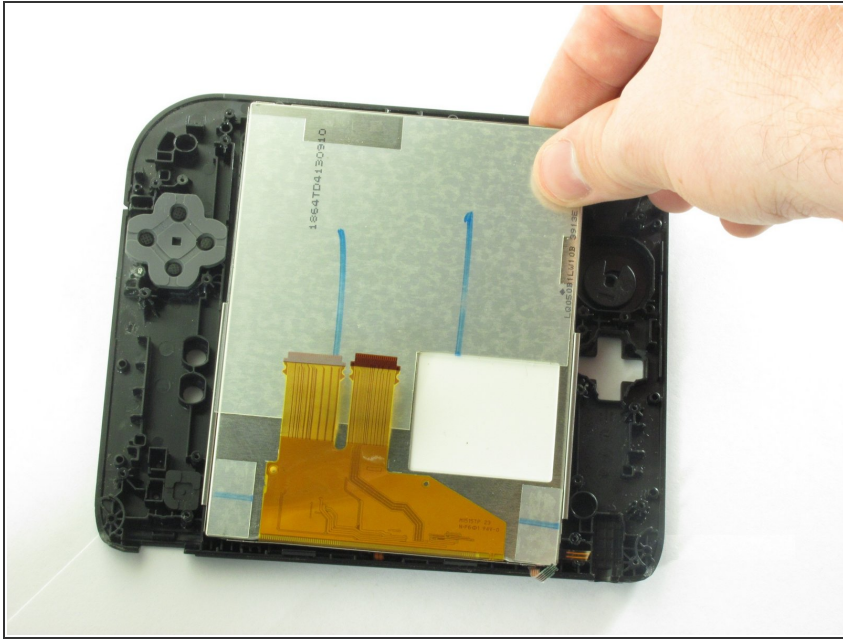
## Step 10 — Remove Motherboard



- Detach the 2 ribbon cables by lifting the black flip connectors that hold them.
- Lift out the rectangular board seated in the face and lift out the white square which is the joystick motor (takes a little effort). Both stay attached to the motherboard.
- On some models, you'll need to remove three more tiny ribbon cables at the bottom of the screen. They are secured by flip up connectors. BE GENTLE!
- Holding the motherboard on either side, lift to remove it.



## Step 11 — Screen Replacement



- ❗ Ensure that the ribbon cables connecting the screen to the motherboard have been disconnected before removing the screen from the front panel casing.
- Grasp the screen firmly by a corner and lift it off of the front panel of the Nintendo 2DS. There should be slight resistance due to the double side adhesive strip on the screen

To reassemble your device, follow these instructions in reverse order.