



Nintendo 2DS Trigger Button Replacement

This guide will accomplish the replacement of the Trigger Buttons on the Nintendo 2DS.

Written By: Fina Beauchamp



INTRODUCTION

This guide for the Nintendo 2DS will teach you how to access the trigger buttons to remove them for cleaning or replacement.

TOOLS:

- [Phillips #00 Screwdriver](#) (1)
-

Step 1 — Battery



- Remove the two Phillips screws securing the upper rear panel.

ⓘ The screws will not completely detach from the back panel.

Step 2



- Hinge the upper rear panel upwards and outwards to remove it.

Step 3



- Remove the battery from its housing by lifting it up from the side closest to the outside edge.

Step 4 — Rear Panel



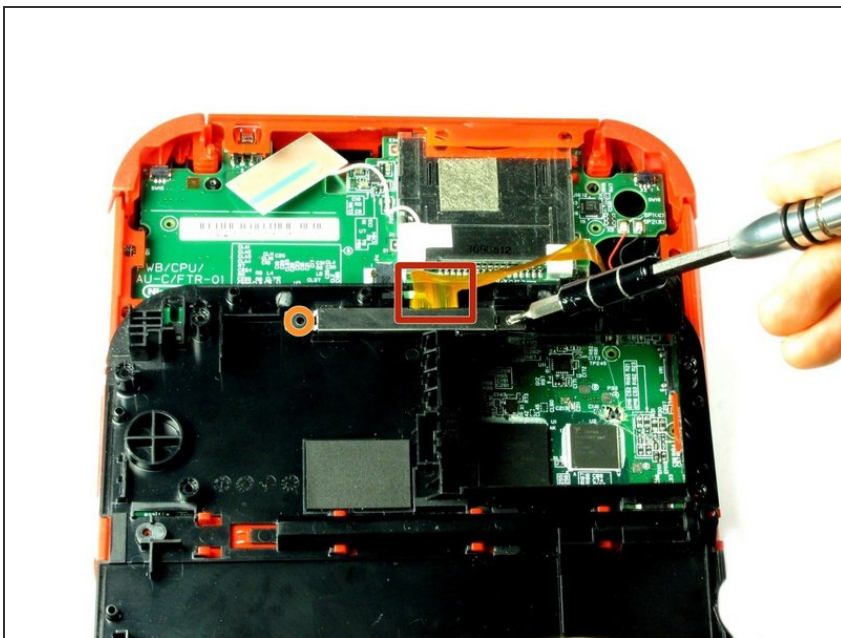
- Remove the ten Phillips screws attaching the rear panel.

Step 5



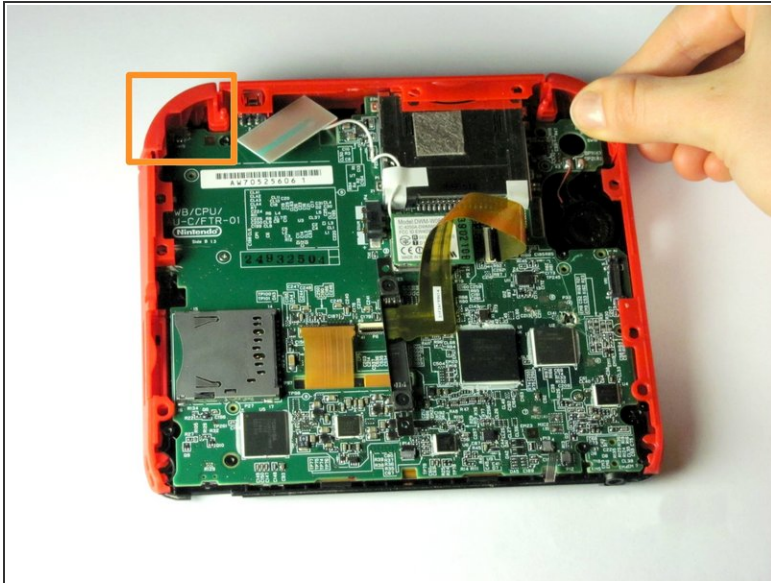
- i The rear panel is attached to the motherboard by a ribbon cable, so be careful not to lift the rear panel too far from the device.
- Carefully pull the rear panel straight up from the device.

Step 6



- Carefully flip the back panel over to locate the attached ribbon cable.
- Remove the two Phillips screws attaching the ribbon cable to the rear panel.
- i Take the opportunity to remove the Left and Right triggers, they have hinges that may break and springs that may jump away.

Step 7 — Remove trigger button



i The trigger buttons have small springs attached to them, so be careful when removing the buttons from the device.

- Pull the trigger button away from the device to remove it.

To reassemble your device, follow these instructions in reverse order.