



# Nintendo 3DS Charger port Replacement

Replacing a damaged charger port with a little bit of soldering.

Written By: Kaylee Morton



## INTRODUCTION

The 3DS charging port is soldered to the motherboard. To remove it, [click here](#) and follow this guide to remove the motherboard, and then use your [soldering skills](#) to remove and replace the charging port.

Note: steps 7-8 are for replacing the charging port piece with one from another 3DS system. You can [order a new piece](#) from amazon and just use it instead.

The guide you are currently viewing has been archived until the procedure can be updated. Following this guide may damage your device.



### TOOLS:

- [Metal Spudger](#) (1)
- [Nintendo 3DS charging port replacement](#) (1)
- [Type #00 Phillips head screwdriver](#) (1)
- [Soldering Gun / Iron and Solder](#) (1)
- [Nintendo 3DS \(2011 model\)](#) (1)



### PARTS:

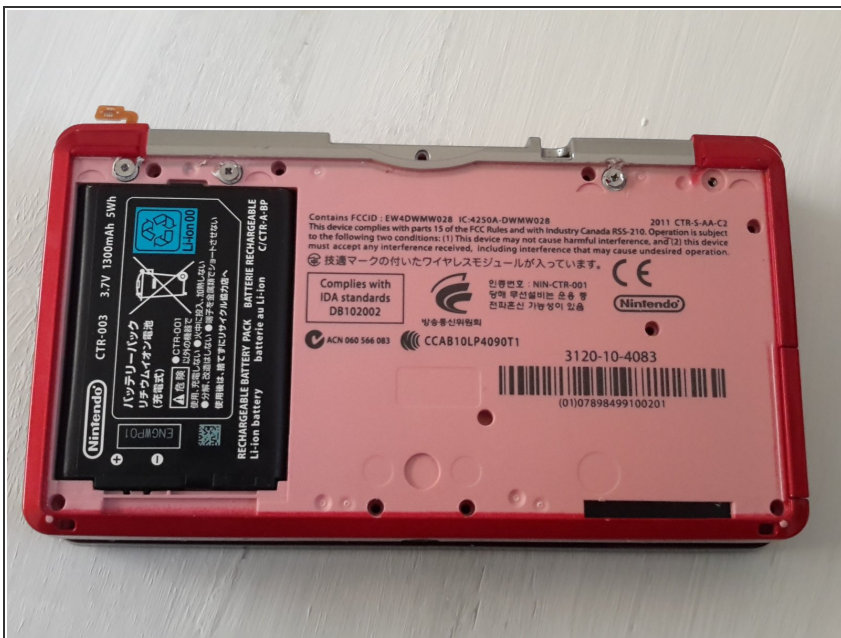
- [3DS Charger Port](#) (1)

## Step 1 — Charger port



- Take out the 4 screws on the back of the system using a Phillips #00 Screwdriver.

## Step 2



- Remove the back cover



## Step 3



- Before proceeding, make sure you have removed the battery.

## Step 4



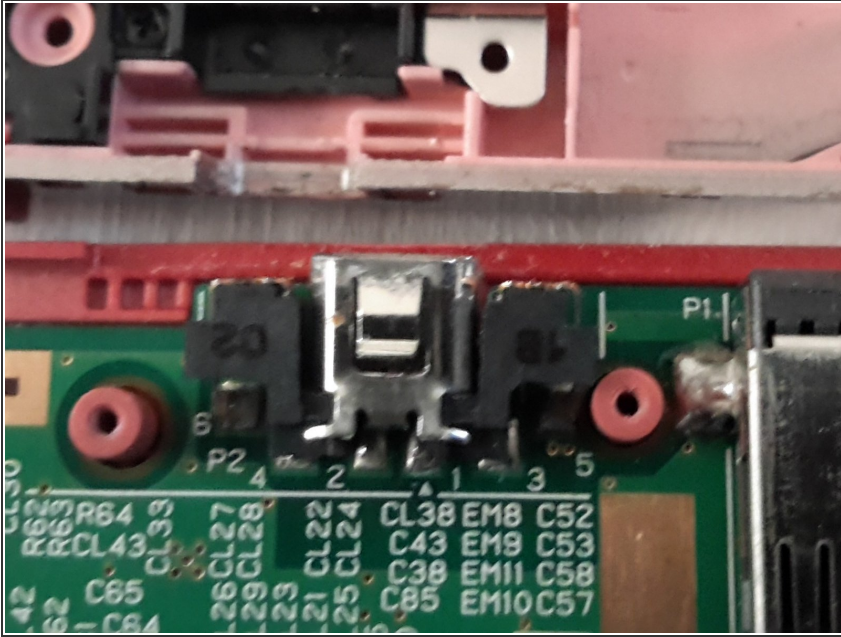
- You will see small black screws in nine different holes. make sure you use the right screwdriver and remove them. Also remove the one silver screw that holds the game cartridge slot.

## Step 5



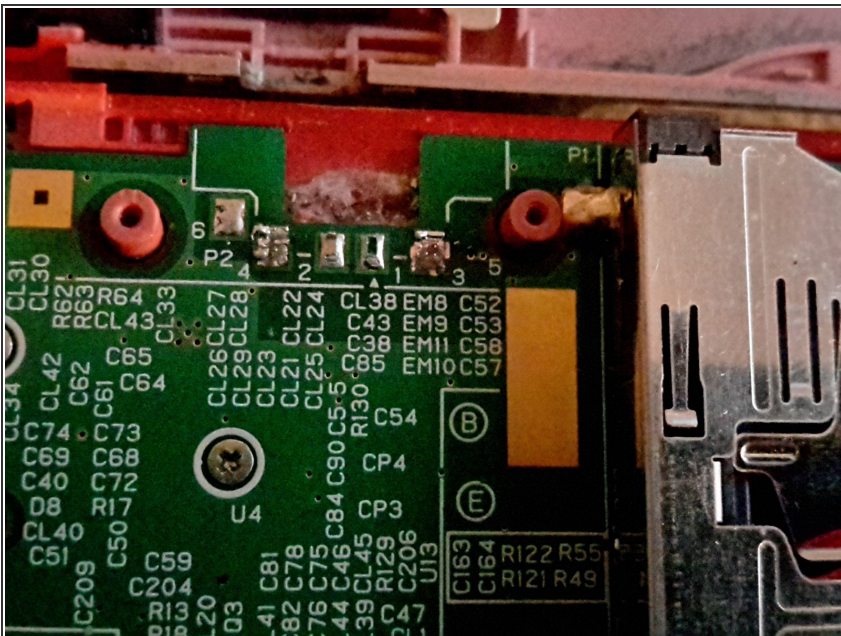
- After you have unscrewed all of the screws. Carefully remove the back with a spudger.

## Step 6



- After you pull it open, you will see the motherboard. Locate the charging port. It should look like this.

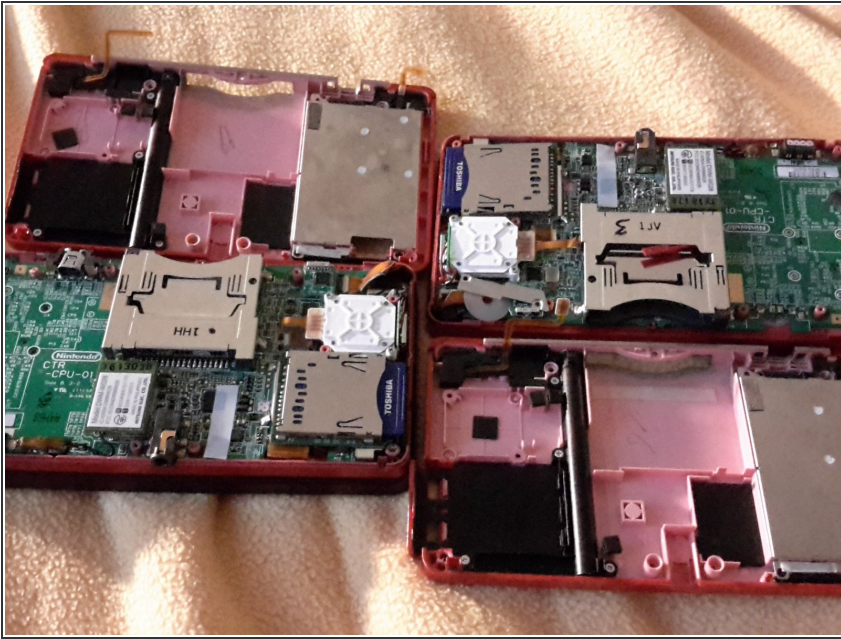
## Step 7



- Using a soldering iron, desolder the old charging port.

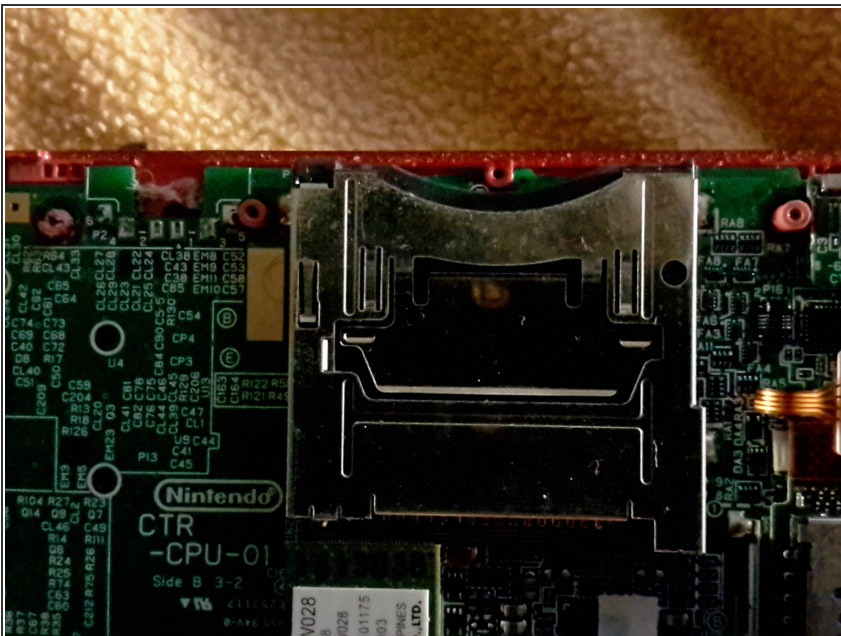


## Step 8



- If you got a charger port for a 3DS, you can skip this step. From another 3DS, desolder the charger port.

## Step 9



- Solder the new charging port to the motherboard.

To reassemble your device, follow these instructions in reverse order.