



Nintendo 3DS IR Board Replacement

Nintendo 3DS IR board prerequisite

Written By: David Hodson



INTRODUCTION

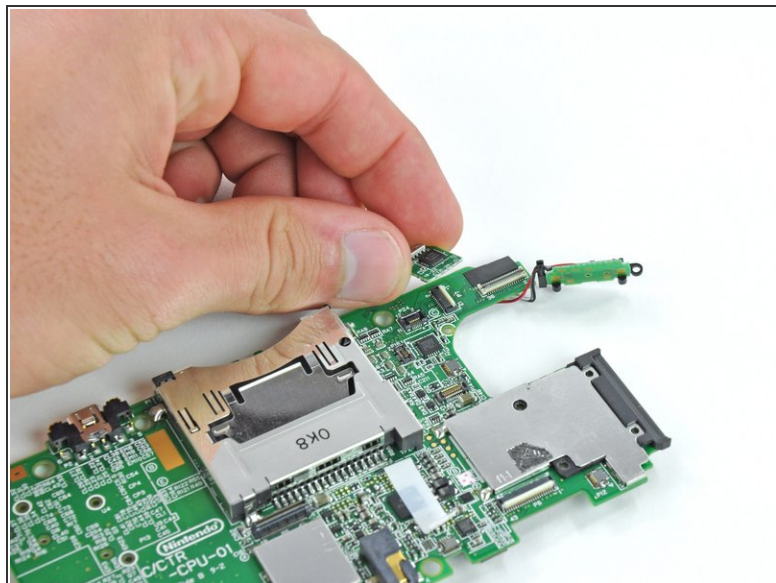
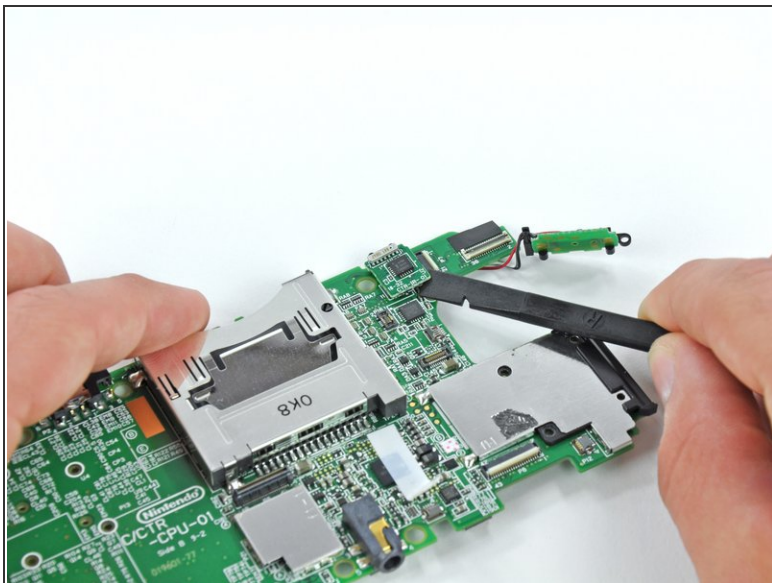
This guide is a prerequisite to removing the motherboard.



TOOLS:

- [Spudger](#) (1)
-

Step 1 — IR Board



- Insert the flat end of a spudger between the IR board and the motherboard.
- Pry the IR board off its socket on the motherboard.
- Remove the IR board from the motherboard.

To reassemble your device, follow these instructions in reverse order.