



# Nintendo 3DS Power Button Replacement

Nintendo 3DS power button replacement.

Written By: David Hodson



---

## INTRODUCTION

Can't turn your 3DS on or off? Your power button may be malfunctioning.

---

### TOOLS:

- [Tweezers](#) (1)
  - [iFixit Opening Tools](#) (1)
  - [Spudger](#) (1)
  - [Phillips #00 Screwdriver](#) (1)
-

## Step 1 — Back Cover



- Unscrew the four Phillips #00 screws along the top of the back cover.
- ⓘ The screws are held in place by locking washers, and will not come out of the back cover.
- ⚠ The comments section is full of unlucky souls who will tell you that the screws here through step 4 will strip incredibly easily. Press down fairly hard, and go slow.

## Step 2



- i Hold the device in one hand and turn it over.
- Grab the top edge of the back cover with your opposite hand so that the cover does not fall back into place.
- i Flip the 3DS over again so that the back cover is facing up.
- Pull the back cover up and away from the rest of the device to remove it.

## Step 3 — Battery



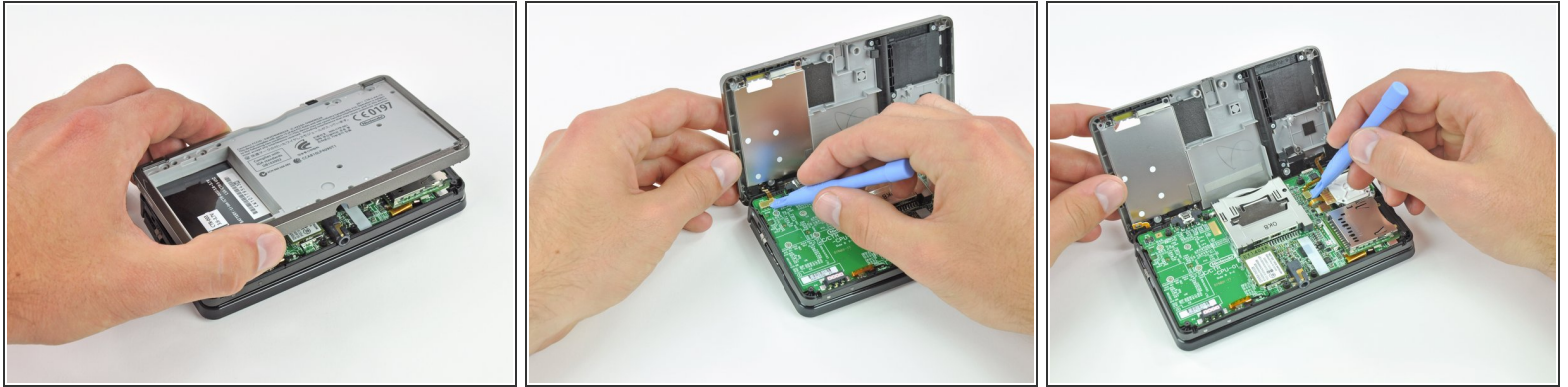
- Insert a plastic opening tool into the notch in the lower case above the battery.
- Pry the battery up with the plastic opening tool.
- Grab the top edge of the battery and lift it out of the lower case.

## Step 4 — Lower Case



- Remove the nine 6.3 mm black Phillips screws from the lower case.
- Remove the 2.4 mm silver Phillips screw above the game cartridge slot.

## Step 5



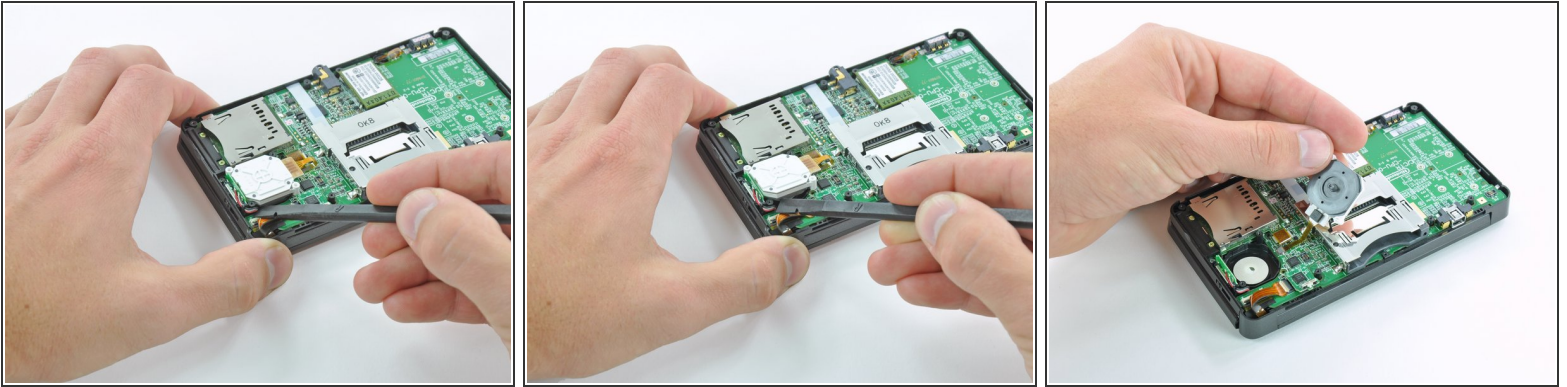
- Lift the bottom edge of the lower case off the rest of the 3DS.
- ⚠ There are still two ribbon cables connecting the mother board to the case, so be sure not to pull the lower case all the way off.
- Use a plastic opening tool to pry the shoulder button ribbon cables off their sockets on the motherboard.
- Remove the lower case from the device.

## Step 6 — Circle Pad Joystick



- Remove the two 7.7 mm Phillips screws securing the back of the Circle Pad to the motherboard.

## Step 7



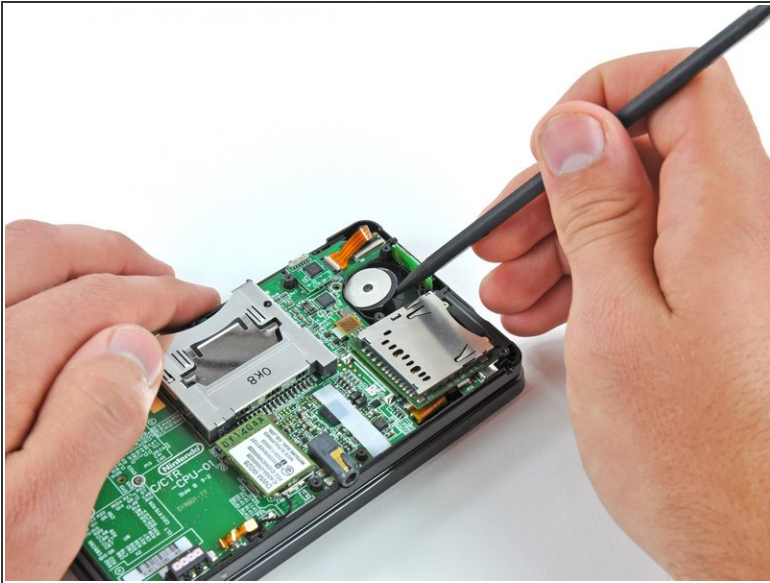
- Use the flat end of a spudger to pry the back of the Circle Pad off the motherboard.
- Lift the Circle Pad joystick off the motherboard and lay it on its back so that the ribbon cable connector is accessible.

## Step 8



- Use the flat end of a spudger or your fingernail to flip up the retaining flap on the Circle Pad ribbon cable ZIF socket.
- ⚠ Be sure you are prying up on the hinged retaining flap, **not** the socket itself.
- Lift the Circle Pad joystick off the motherboard.

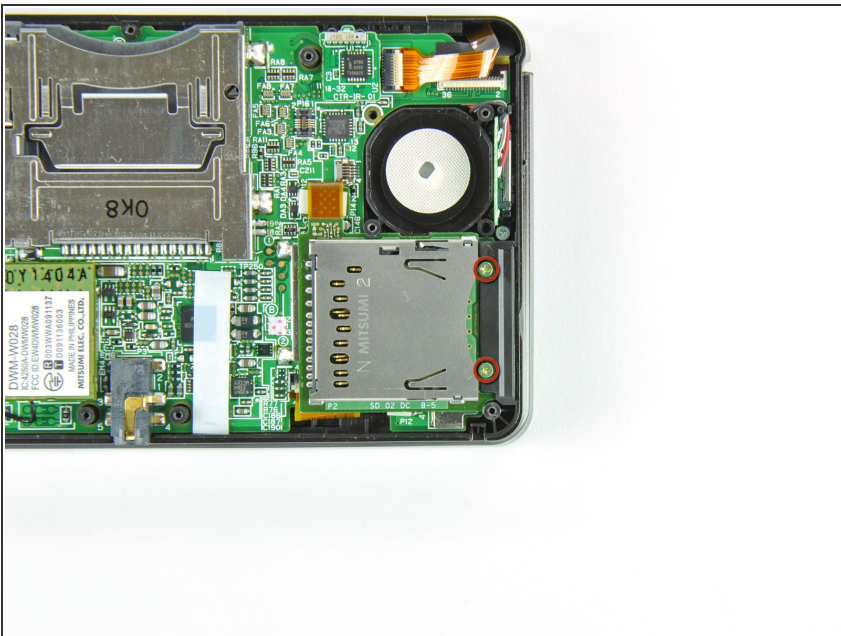
## Step 9



**i** To decrease the chance of losing it during repairs, you may want to remove the two thin pads underneath the Circle Pad joystick.

- Use a spudger or screwdriver to lift the pads up and remove them from the device.

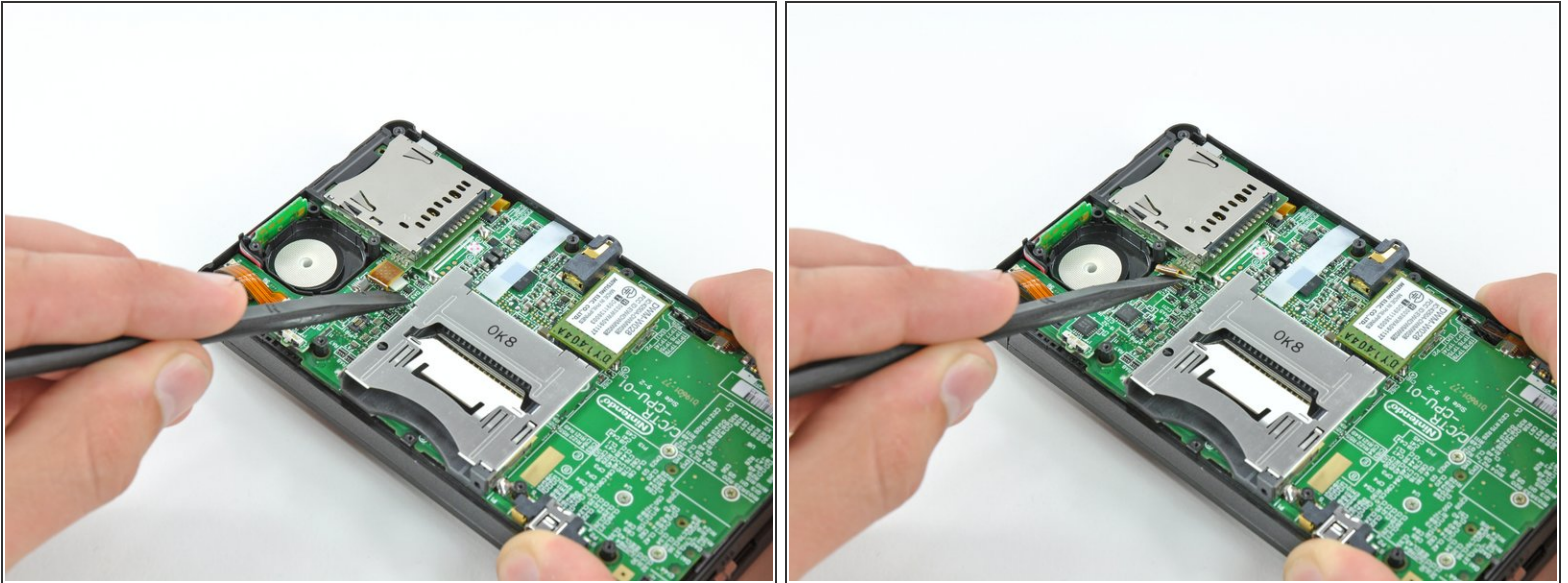
## Step 10 — SD Board



- Remove the two 4.5 mm Phillips screws securing the SD board to the motherboard.



## Step 11



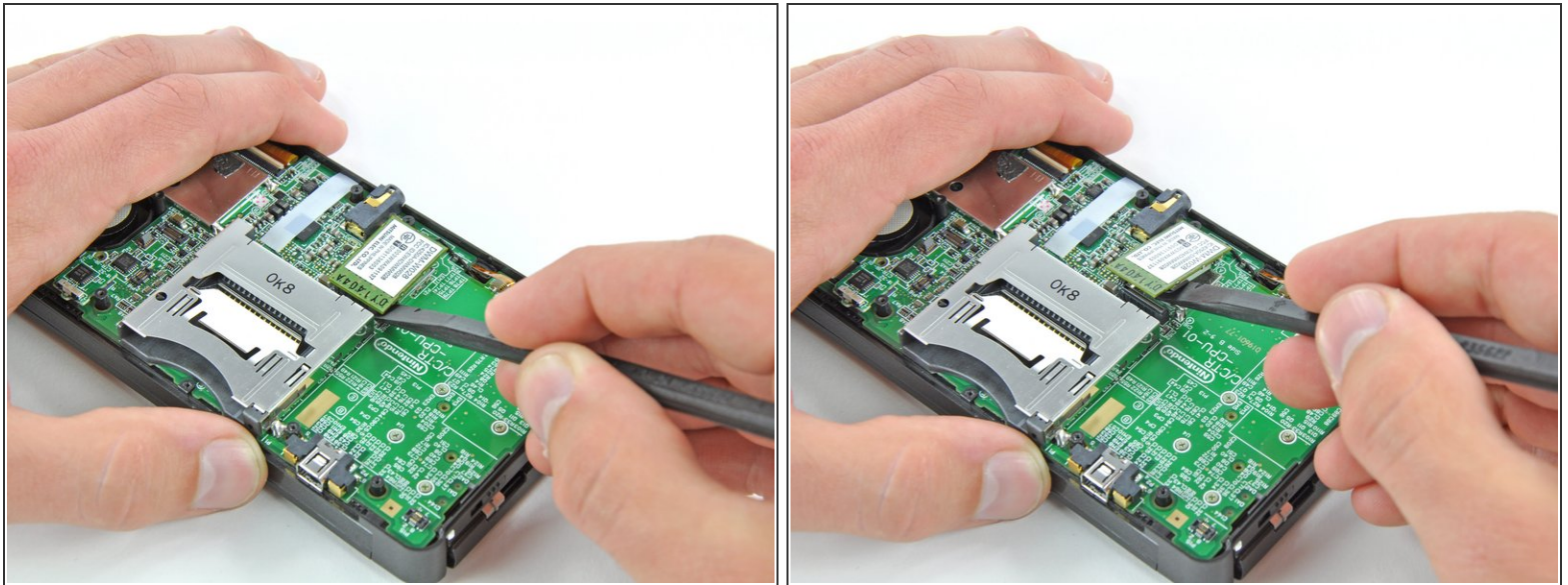
- Use the flat end of a spudger to pry the SD board ribbon cable connector off its socket on the motherboard.

## Step 12



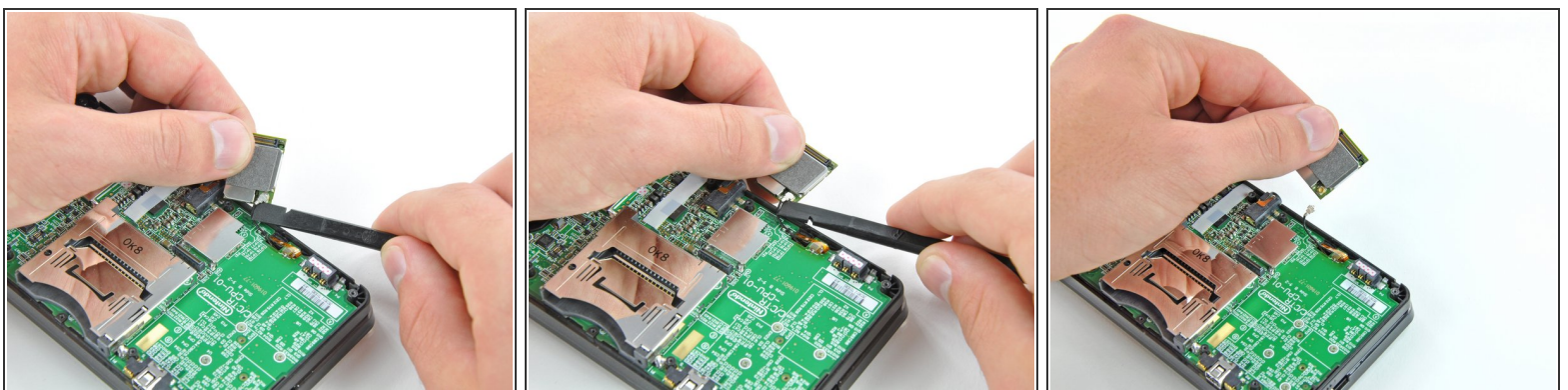
- Insert the flat end of a spudger between the SD board and the motherboard.
- Run the spudger along the sides of the SD board to free it from the adhesive pad holding it in place.
- Once completely freed, lift the SD board straight off the motherboard.

## Step 13 — Wi-Fi Board



- Slide the flat end of a spudger under the corner of the Wi-Fi board, and lift it away from the motherboard.
- ⓘ The Wi-Fi antenna cable is still connected to the Wi-Fi board, so you cannot completely remove the Wi-Fi board yet.

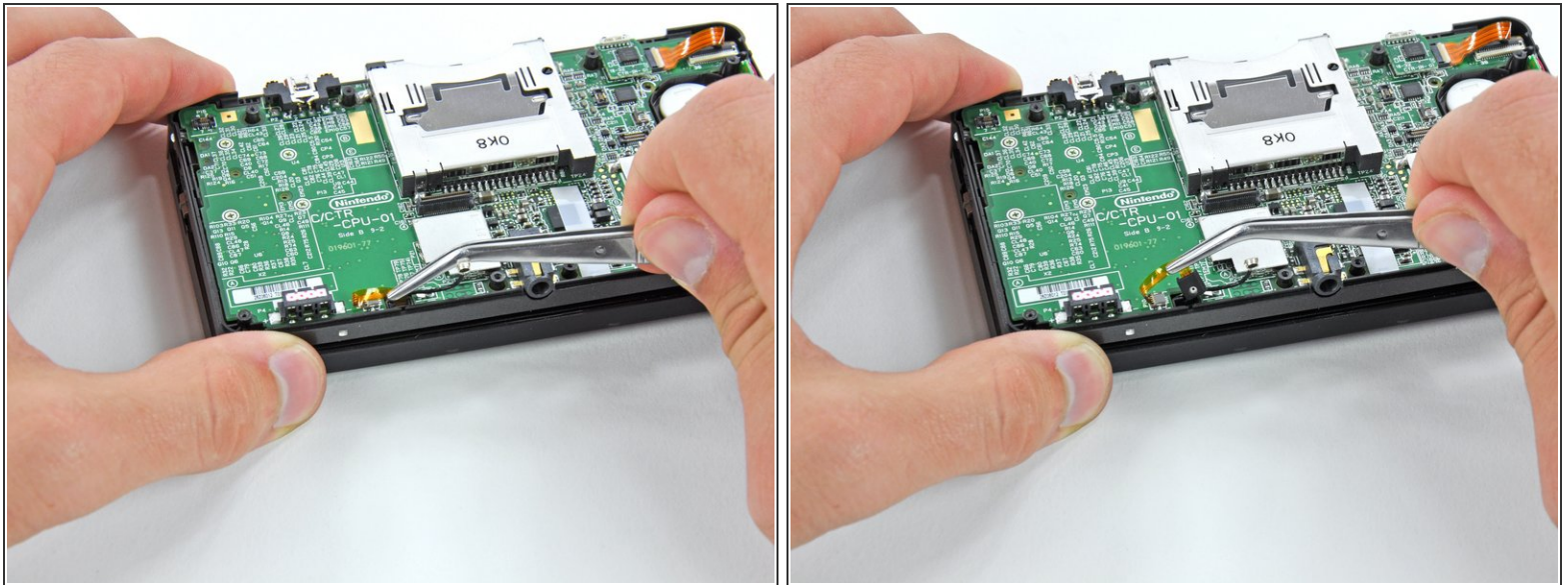
## Step 14



- ⓘ Lift the Wi-Fi board off the motherboard and rotate it so that the bottom side is facing up.
- Use the flat end of a spudger to pry the Wi-Fi antenna cable connector off its socket on the Wi-Fi board.
- Remove the Wi-Fi board from the device.

This document was generated on 2019-09-18 09:05:51 AM (MST).

## Step 15 — Motherboard Assembly



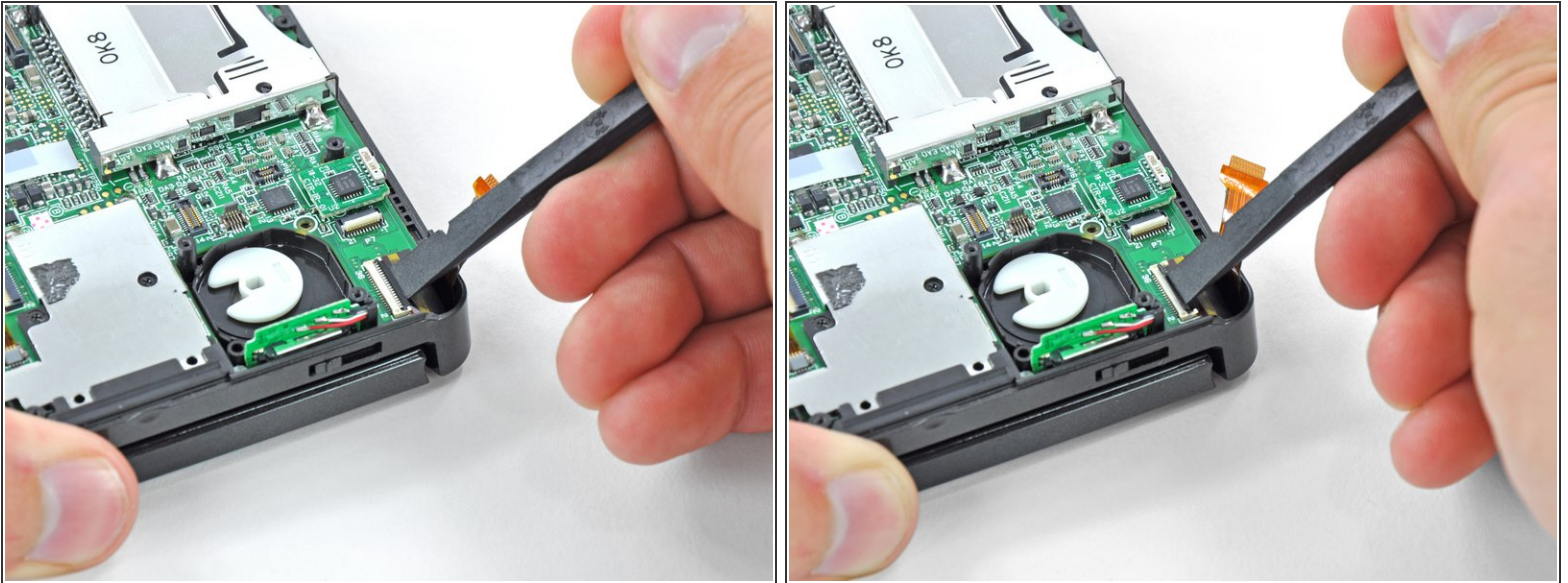
- Grasp the microphone ribbon cable near the microphone with a pair of tweezers.
- Pull the microphone straight up out of the upper case.

## Step 16



- Use the flat end of a spudger or your fingernail to flip up the retaining flap on the speaker assembly ribbon cable ZIF socket.
- ⚠ Be sure you are prying up on the hinged retaining flap, NOT the socket itself. Damaging the socket or cable will result in a 3DS that will blink its power LED when you press the power button - and do nothing else.
- Disconnect the speaker assembly ribbon cable with a pair of tweezers.

## Step 17



- Use the flat end of a spudger or your fingernail to flip up the retaining flap on the camera ribbon cable ZIF socket.

⚠ Be sure you are prying up on the hinged retaining flap, **not** the socket itself.

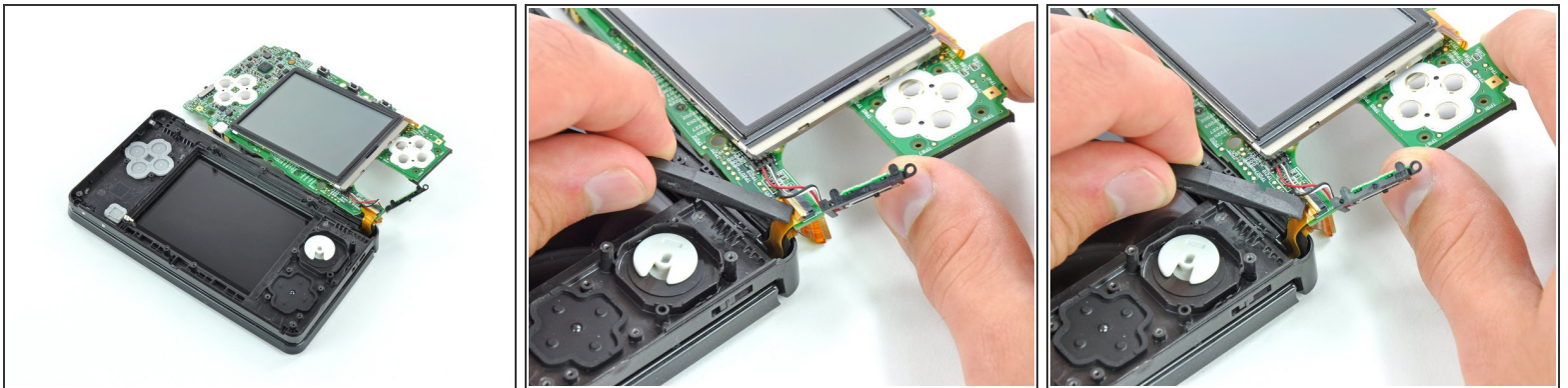
- ☑ When reassembling, note that the gold contacts face toward the motherboard (as opposed to the camera cable's gold contacts facing away).

## Step 18



- Remove seven Phillips screws securing the motherboard to the upper case:
  - Four 2.5 mm gold screws
  - Two 3.5 mm black screws
  - One 2.5 mm silver screw
- Lift the side of the motherboard that sits along the bottom edge of the 3DS.

## Step 19



- ⓘ Continue lifting the motherboard assembly and rotate it until it is resting next to the rest of the device.
- Use the flat end of a spudger or your fingernail to flip up the retaining flap on the LCD ribbon cable ZIF socket.
- ⚠ Be sure you are prying up on the hinged retaining flap, **not** the socket itself.

## Step 20



- Remove the motherboard assembly from the rest of the device.

## Step 21 — Power Button



- Peel the silicone cover from the back of the power button.

## Step 22



- ⓘ Open the 3DS, but keep the backside of the buttons facing upward.
- Use your finger to push the power button up through the upper case and remove it.
- ☑ The power button only fits in one orientation, so be sure to reinstall it correctly.

To reassemble your device, follow these instructions in reverse order.