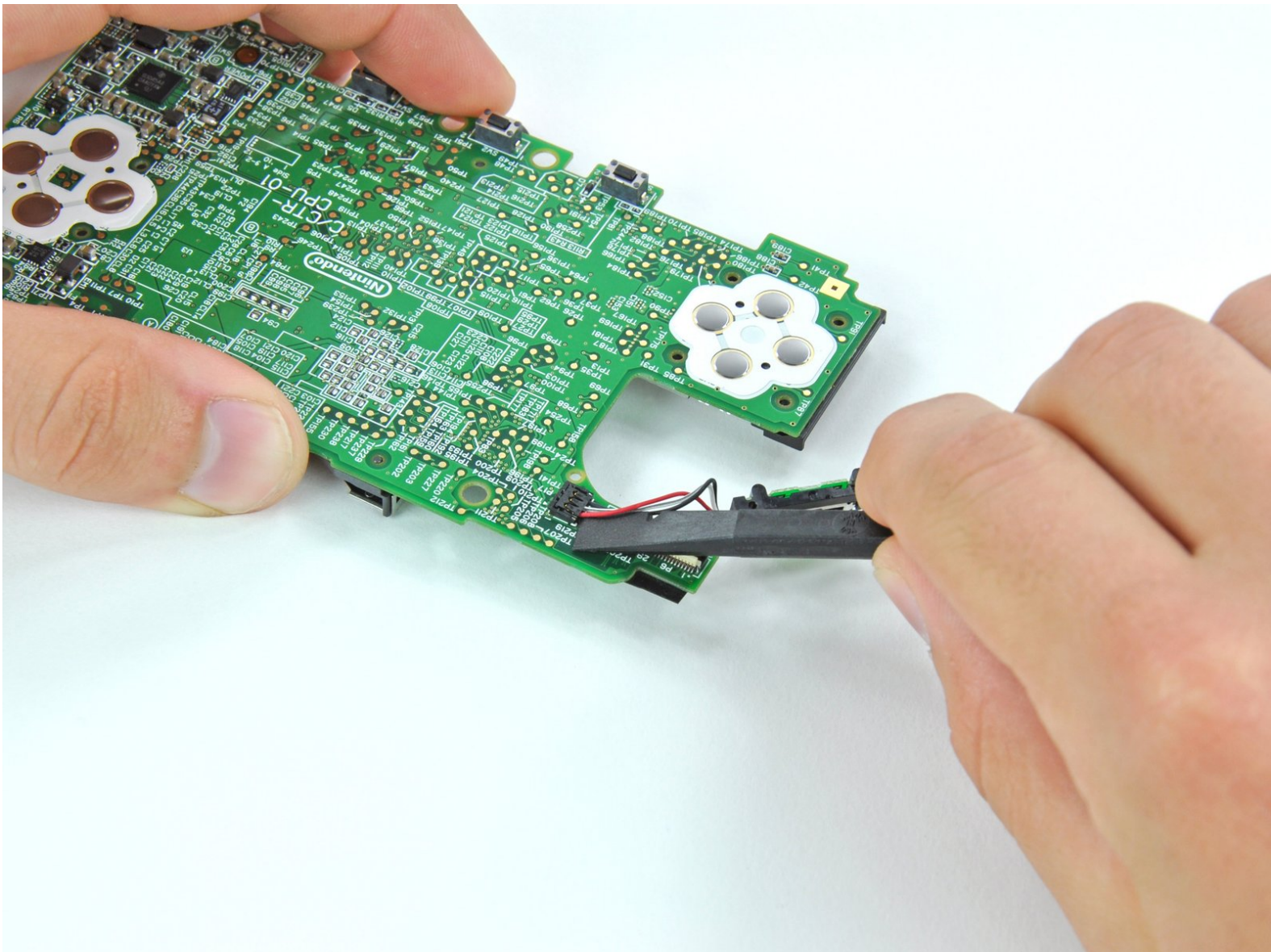




Nintendo 3DS Volume Switch Replacement

Nintendo 3DS volume switch prerequisite

Written By: David Hodson



INTRODUCTION

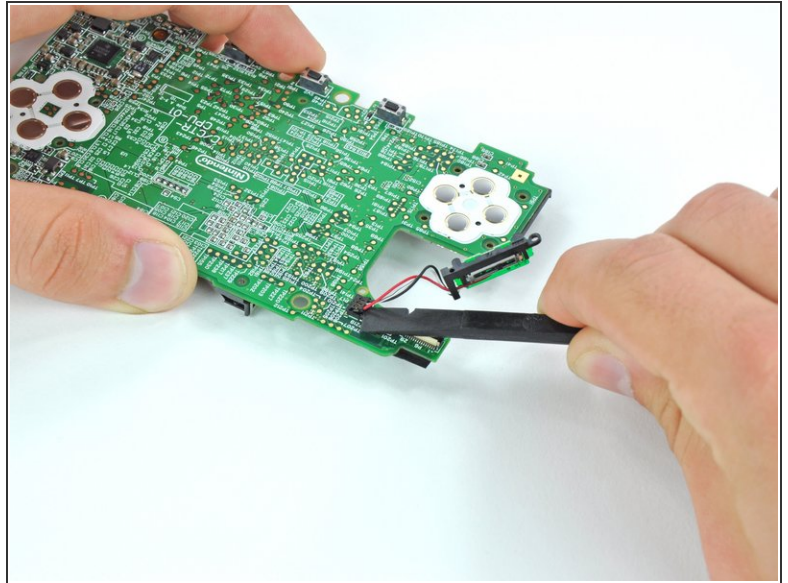
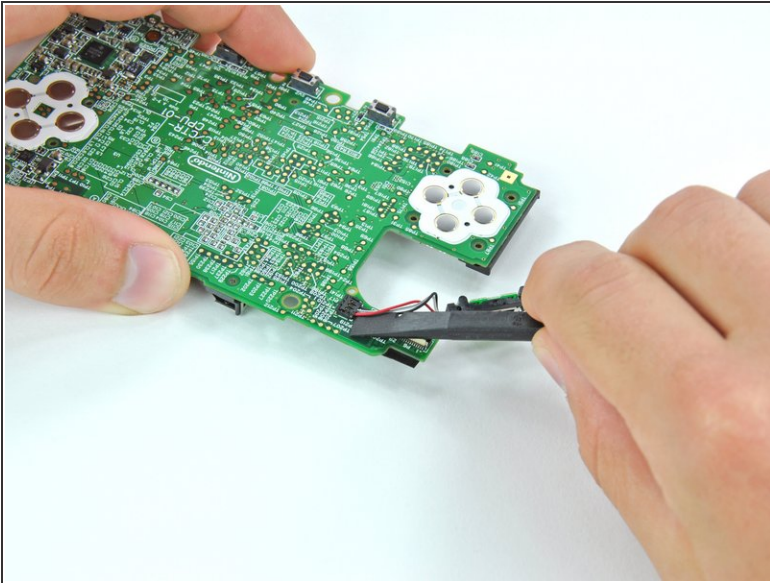
This guide is a prerequisite to removing the motherboard.




TOOLS:

- [Spudger](#) (1)
-

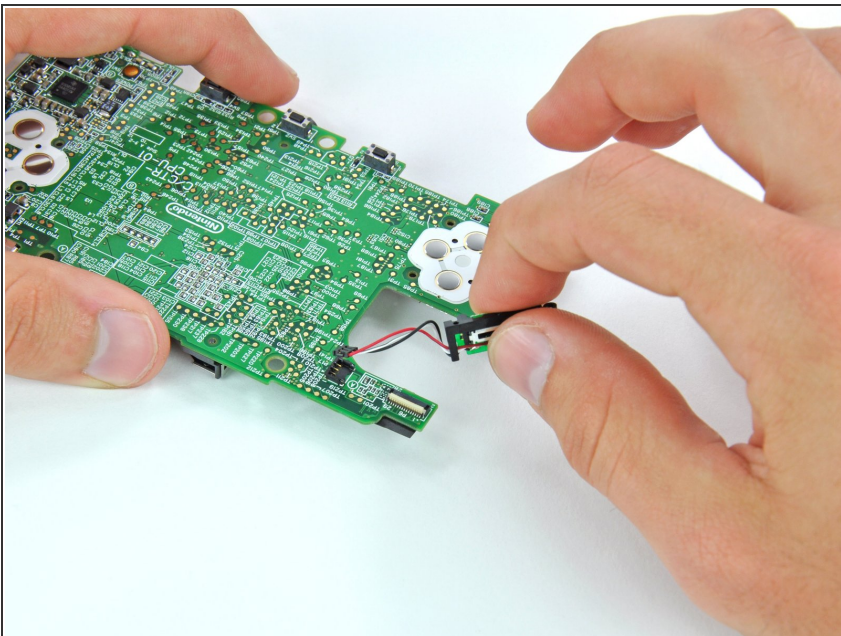
Step 1 — Volume Switch



 Turn the motherboard over.

- Use the flat end of a spudger to pry the volume switch connector out of its socket on the motherboard.

Step 2



- Remove the volume switch from the motherboard.

To reassemble your device, follow these instructions in reverse order.