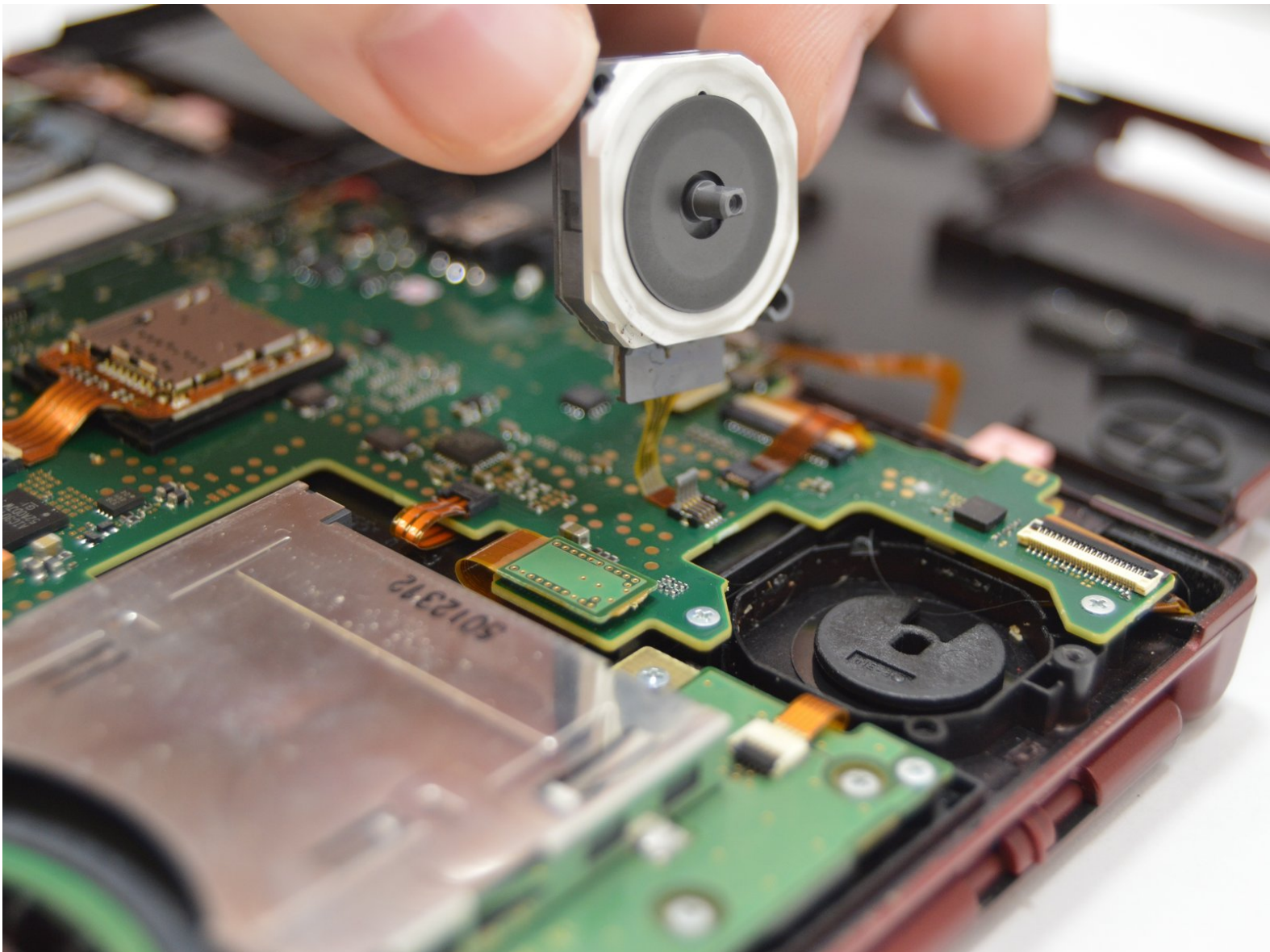




# Nintendo 3DS XL 2015 Circle Pad Replacement

Replacement guide for the circle pad on a Nintendo 3DS XL 2015.

Written By: Tori Anderson



## INTRODUCTION

This guide will allow you to repair a broken circle pad on you 2015 Nintendo 3ds XL. If your circle pad no longer functions well or doesn't function at all this is the guide for you. All you will need is a new circle pad, a few screwdrivers and with a little patience your 3ds will once again have full functionality.



### TOOLS:

- [Phillips #00 Screwdriver](#) (1)
- [Spudger](#) (1)
- [Thumb Tack](#) (1)
- [Metal Spudger](#) (1)
- [Phillips #000 Screwdriver](#) (1)




### PARTS:

- [Nintendo 3DS XI Joystick Analog](#) (1)


## Step 1 — Circle Pad



 Ensure device is turned off and the stylus and game card are removed.

## Step 2



- Turn the device so that the back cover is facing you and locate the two screws at the top of the back cover.
- Using the Phillips #000 screwdriver, loosen the screws on the back cover.
-  The screws do not come out, but may be loosened to allow for the back cover to be removed.
- Gently pry the tabs on the side of the device with the metal spudger or your thumbnail and lift off the back cover.



## Step 3



- Remove the microSD card by pushing it in, the card should automatically pop out.

## Step 4



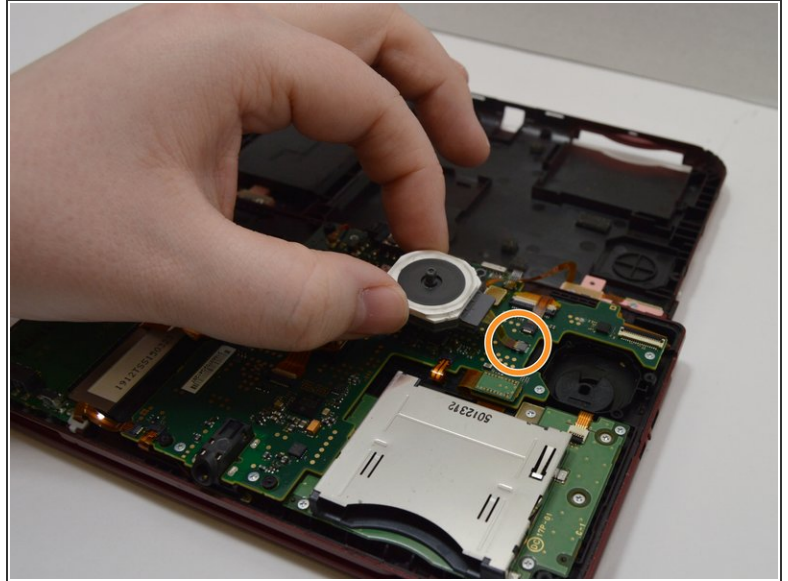
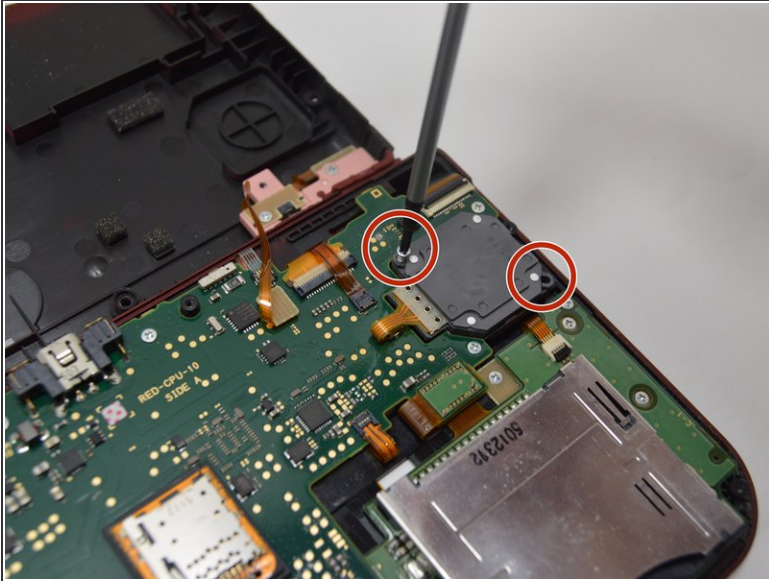
- To remove the battery, hold the device with the battery facing up in one hand, with a finger securely gripping the lid of the device, and gently flip the device over to your other hand. The battery should fall into your hand.

## Step 5



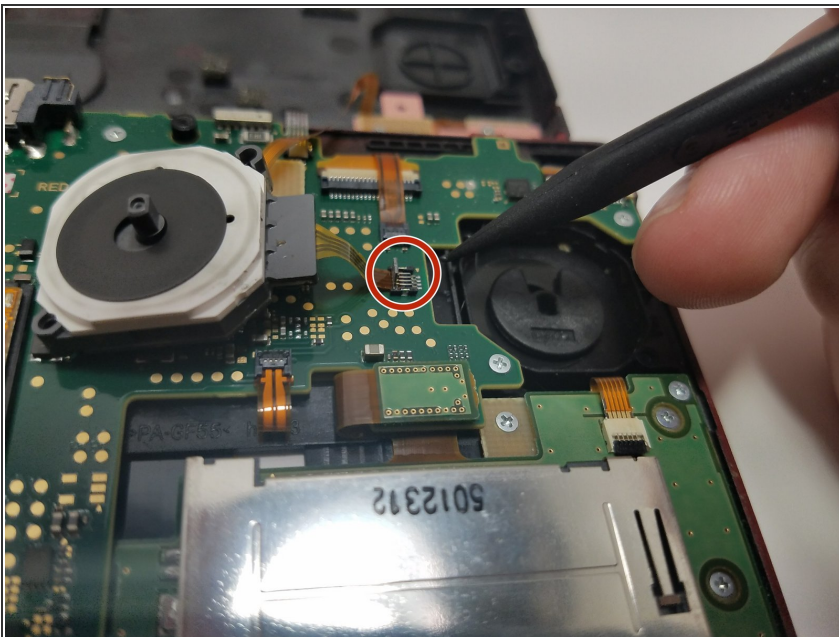
- Remove the two rubber bumpers on the back of the device with a thumb tack.
- Using the Phillips #00 screwdriver, remove all 8 of the screws holding the bottom cover to the motherboard.
- Lift off the bottom cover, being sure not to disconnect the two ZIF connectors for the L/R buttons on the back of the device.

## Step 6



- Using the Phillips #00 screwdriver, remove the two screws holding the circle pad in place.
- ⓘ Be sure to keep these screws separate from the bottom cover screws, the circle pad screws are slightly longer and only compatible with the circle pad.
- Lift the circle pad out of its place to expose the ZIF connector.

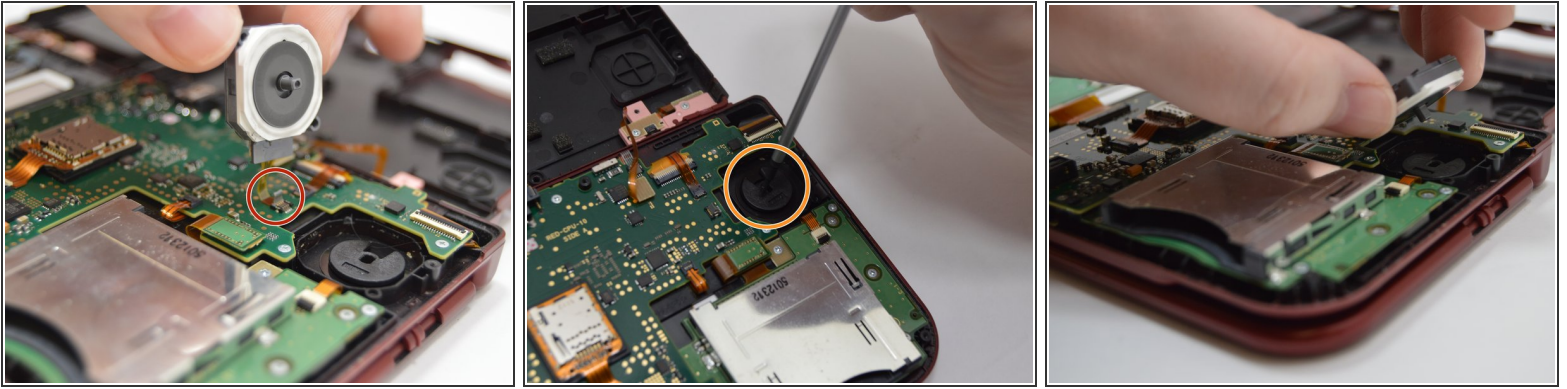
## Step 7



- Using the tip of the spudger, gently lift off the lid of the ZIF connector to release the circle pad cable.



## Step 8



- Take the new circle pad assembly and insert the cable back into the open ZIF connector and close it using the spudger.
  - Ensure the internal component of the circle pad is correctly oriented with a small screwdriver or spudger.
  - Gently place the new circle pad back into its place and secure with the screws.
- i** We had to try this step a few times before we were able to orient it correctly. Try to make sure that the circle pad does not move the internal assembly once it is inserted.

To reassemble your device, follow these instructions in reverse order.