



Nintendo 3DS XL Circle Pad Replacement

This guide will take you step by step through the process of replacing the circle pad joystick.

Written By: Charlene Donlon



INTRODUCTION

So you managed to break your circle pad and can't play your favorite games? Don't fear, the circle pad can be replaced!



TOOLS:

- [Phillips #000 Screwdriver](#) (1)
- [Phillips #00 Screwdriver](#) (1)
- [iFixit Opening Tools](#) (1)
- [Spudger](#) (1)
- [Tweezers](#) (1)



PARTS:

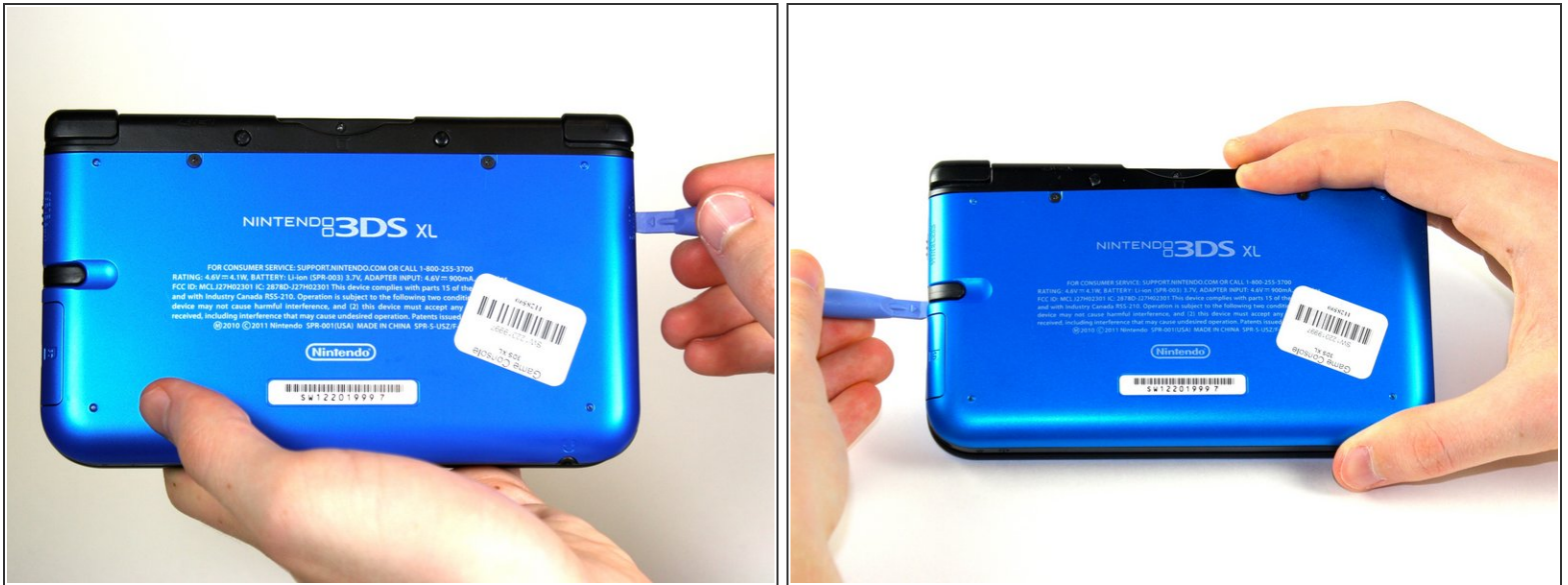
- [Nintendo 3DS XL Control Pad Button](#) (1)
- [Nintendo 3DS XL Control Pad Rubber Gasket](#) (1)
- [Nintendo 3DS XL Control Buttons](#) (1)
- [Nintendo 3DS XL Control Buttons Rubber Gasket](#) (1)
- [Nintendo 3DS XL Circle Pad Button](#) (1)

Step 1 — Battery



- Loosen the two 4.2 mm-length screws located at the top of the back cover.
- ⓘ The screws have locking washers that prevent the screws from falling off of the back cover. Leave these locking washers on the screws; it is not necessary to remove the washers for this repair guide.

Step 2



- Hold the device so that the cover is facing up.
- Using a plastic opening tool, pry off the cover starting at the top right corner.
 - Hold the edge of the cover to ensure it does not reattach.
 - Look for the small section below the stylus compartment. Pry off the cover at that point if it is still attached.
- Take off the cover of the device and set aside.

Step 3



- Insert the plastic opening tool into the opening located on the right side of the battery.
- Pry off the battery from the lower casing.
- Lift the battery out of the case and set aside.

Step 4 — Circle Pad Joystick



- Using tweezers pull out the rubber bumpers that are located at the top of the device on either side of the game cartridge compartment.

Step 5



- Remove the six 6.2 mm screws using a Phillips #00 screwdriver

Step 6



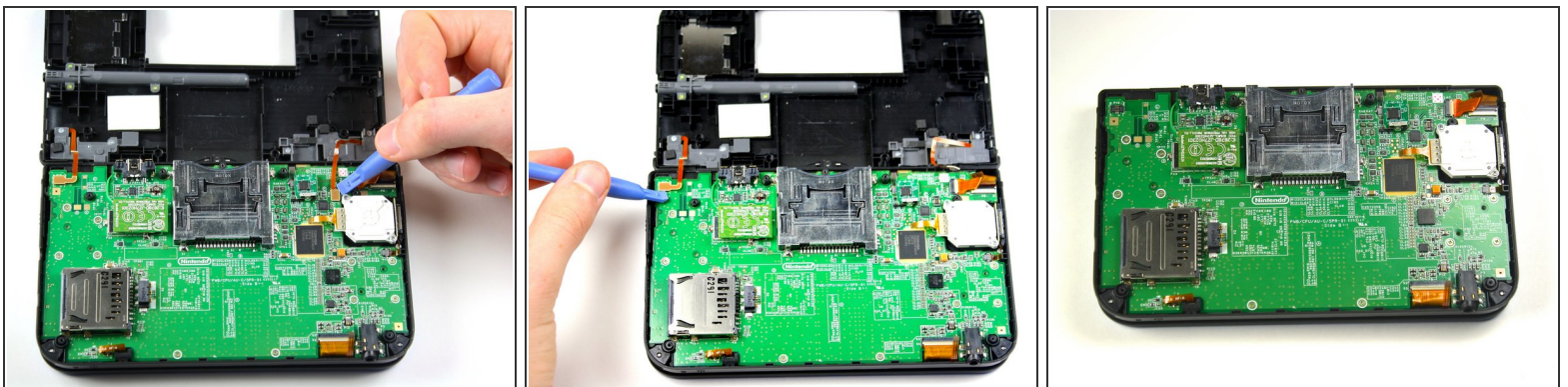
- Remove the 2.3 mm screw located above the game cartridge slot with a Phillips #00 screwdriver.

Step 7



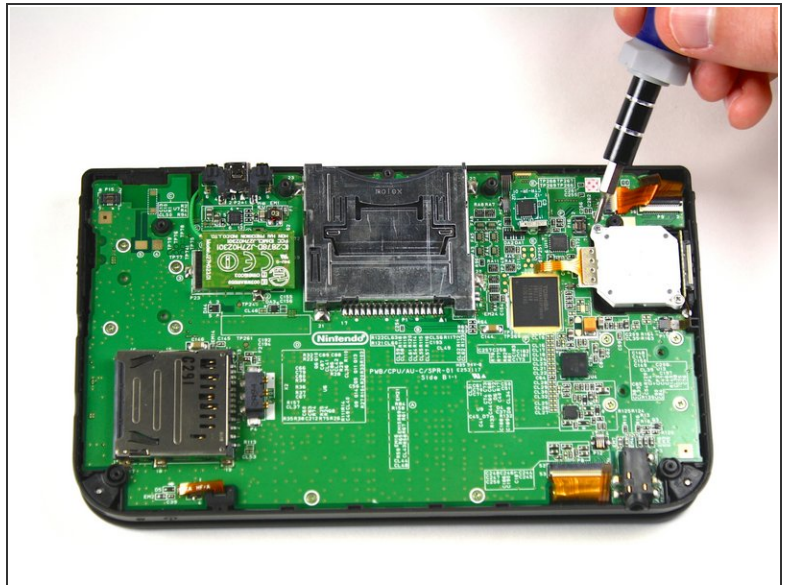
- Make sure the SD card has been removed. With a plastic opening tool pry off the lower case starting at the bottom edge and working around the perimeter.
- Two ribbon cables connect the case to the circuit board. Be careful to not pull the case too hard and rip the ribbon cables.

Step 8



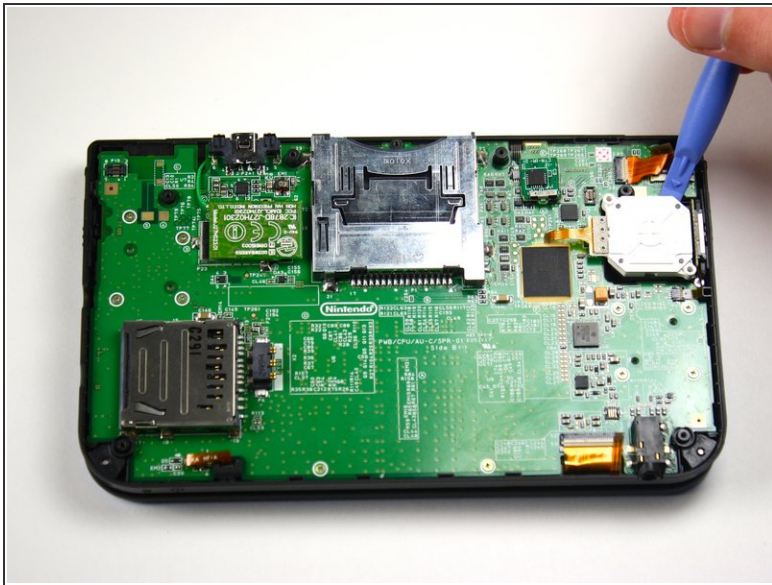
- Remove the ribbon cables located underneath the left and right bumpers by prying up the base of the cables with a plastic opening tool.
- Completely remove the lower case from the rest of the device and set aside.

Step 9



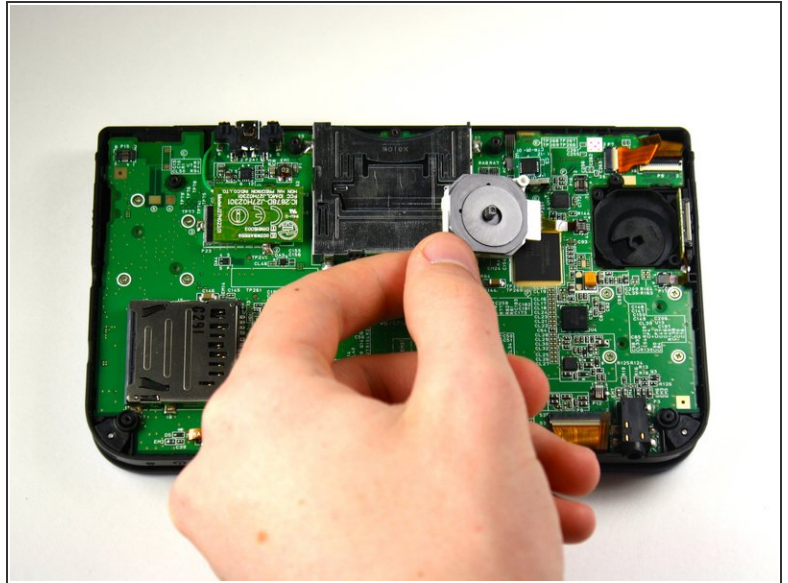
- Position the device such that the game cartridge slot is located at the top.
- Locate the circle pad on the right side of the device.
- Remove the two 7.5 mm screws on the upper left and the bottom right corners.

Step 10



- Using a plastic opening tool pop off the circle pad joystick.
 - Do not use excessive force with the plastic opening tool. There is a ribbon attaching the circle pad joystick to the motherboard that will remain attached.
- i** There is a loose washer located in between the circle pad joystick and the circle pad. Use caution and do not lose this piece.

Step 11



- Using the flat head side of the spudger carefully lift up the retaining flap that attaches the circle pad ribbon to the motherboard.
- Remove the ribbon and circle pad joystick.

To reassemble your device, follow these instructions in reverse order.