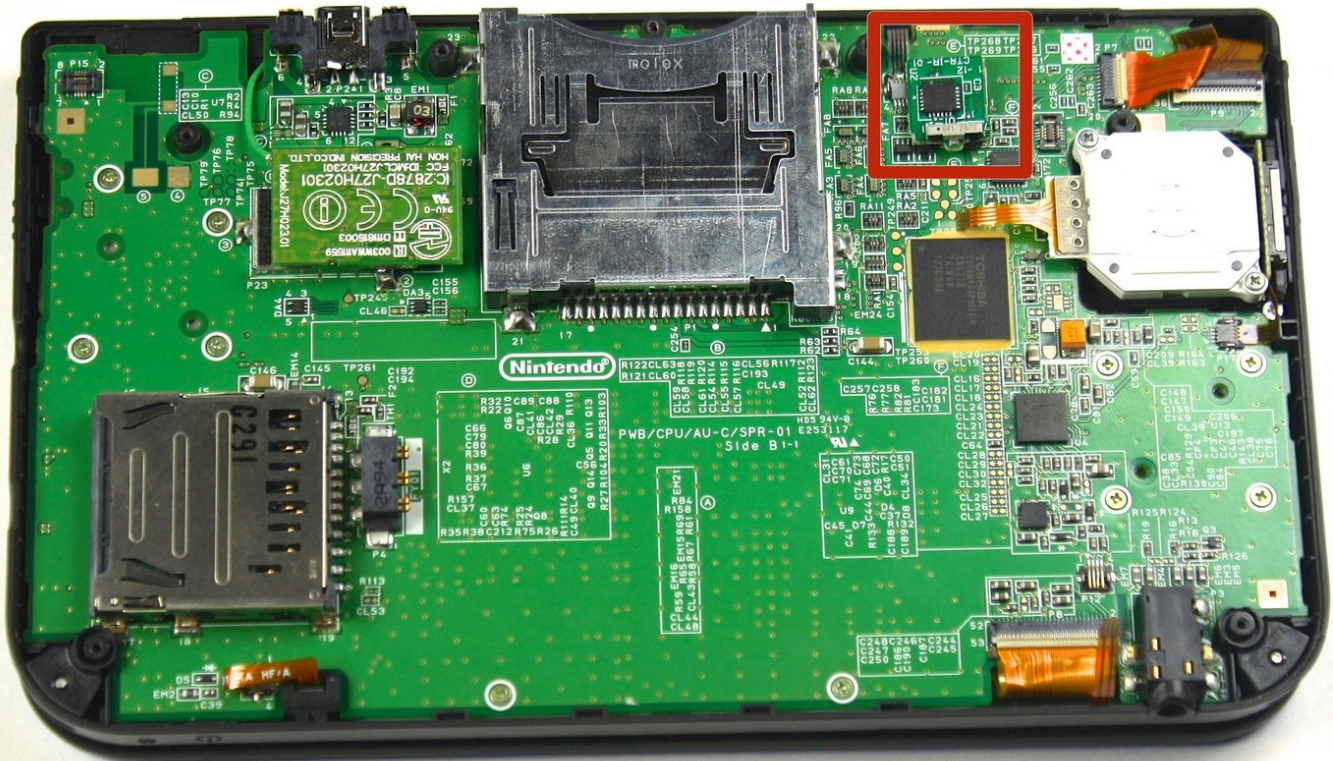




Nintendo 3DS XL IR Board Replacement

This guide will aid in the replacement of the IR Board, or the infrared sensor that is used in certain games for the Nintendo 3DS XL.

Written By: Charlene Donlon



INTRODUCTION

The guide will help take apart the Nintendo 3DS XL to uncover the motherboard, then identify the IR Board in order to be replaced.



TOOLS:

- [iFixit Opening Tools](#) (1)
- [Spudger](#) (1)
- [Tweezers](#) (1)
- [Phillips #00 Screwdriver](#) (1)



PARTS:

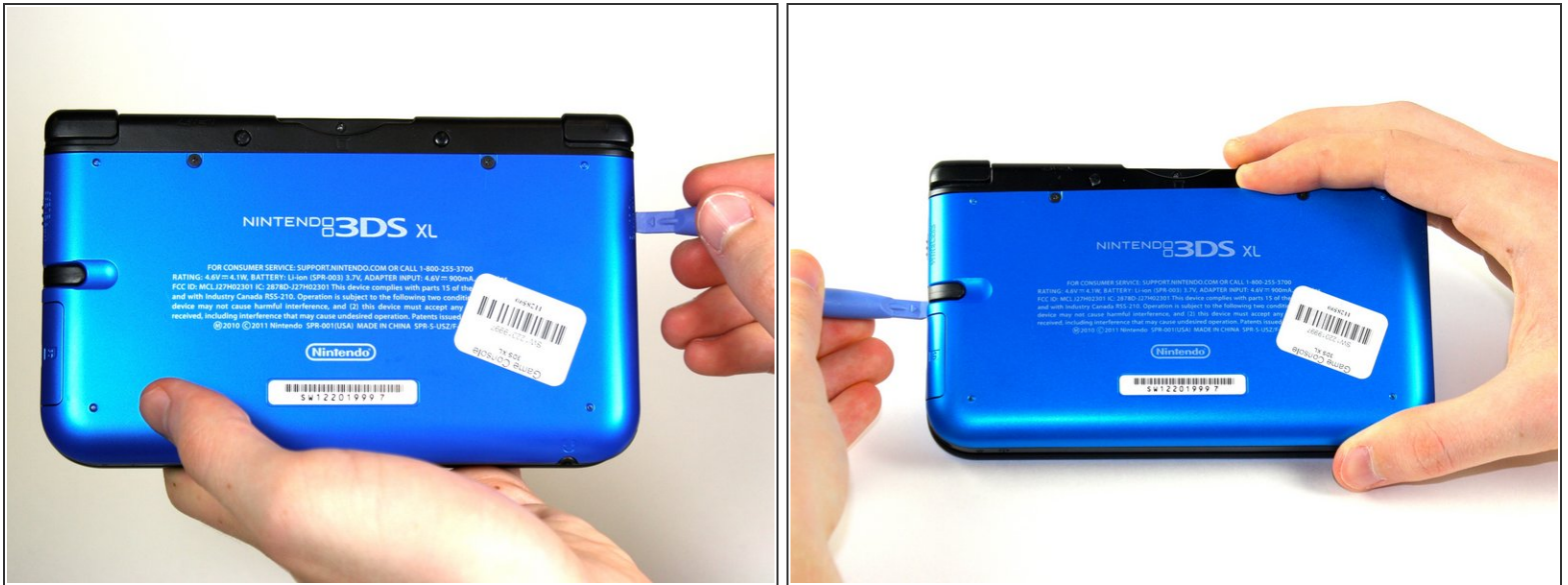
- [Nintendo 3DS XL Circle Pad Control Board](#) (1)

Step 1 — Battery



- Loosen the two 4.2 mm-length screws located at the top of the back cover.
- ⓘ The screws have locking washers that prevent the screws from falling off of the back cover. Leave these locking washers on the screws; it is not necessary to remove the washers for this repair guide.

Step 2



- Hold the device so that the cover is facing up.
- Using a plastic opening tool, pry off the cover starting at the top right corner.
 - Hold the edge of the cover to ensure it does not reattach.
 - Look for the small section below the stylus compartment. Pry off the cover at that point if it is still attached.
- Take off the cover of the device and set aside.

Step 3



- Insert the plastic opening tool into the opening located on the right side of the battery.
- Pry off the battery from the lower casing.
- Lift the battery out of the case and set aside.

Step 4 — Circle Pad Joystick



- Using tweezers pull out the rubber bumpers that are located at the top of the device on either side of the game cartridge compartment.

Step 5



- Remove the six 6.2 mm screws using a Phillips #00 screwdriver

Step 6



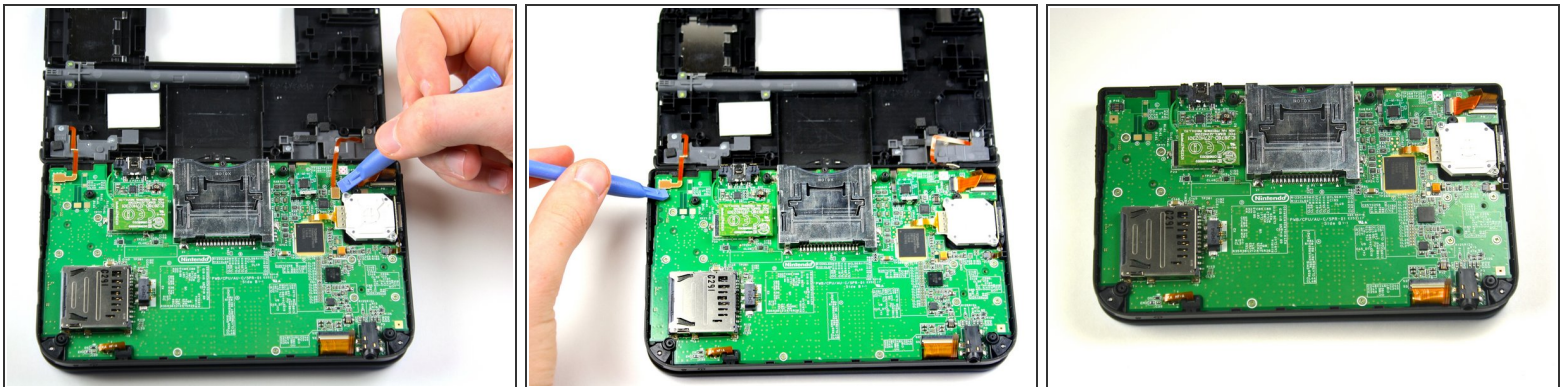
- Remove the 2.3 mm screw located above the game cartridge slot with a Phillips #00 screwdriver.

Step 7



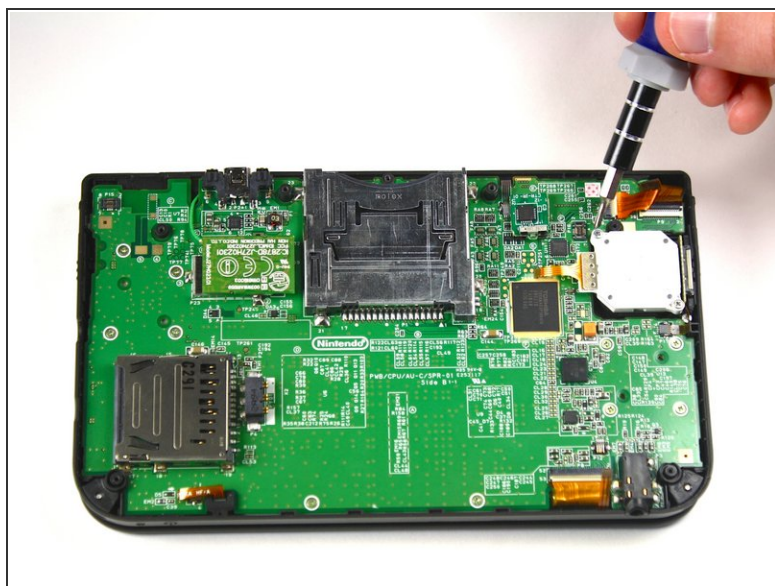
- Make sure the SD card has been removed. With a plastic opening tool pry off the lower case starting at the bottom edge and working around the perimeter.
- Two ribbon cables connect the case to the circuit board. Be careful to not pull the case too hard and rip the ribbon cables.

Step 8



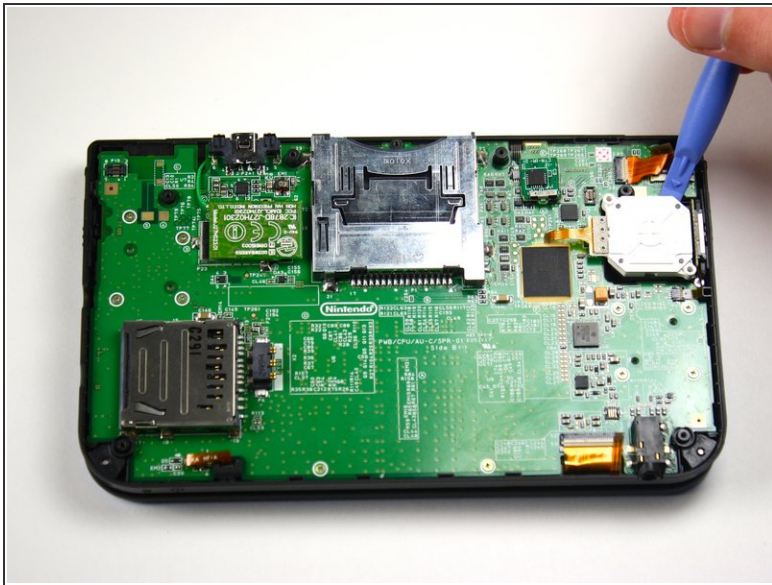
- Remove the ribbon cables located underneath the left and right bumpers by prying up the base of the cables with a plastic opening tool.
- Completely remove the lower case from the rest of the device and set aside.

Step 9



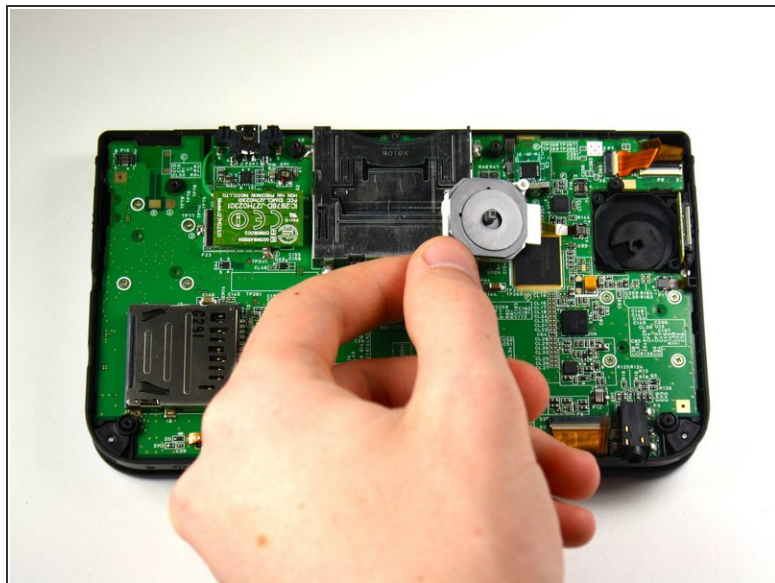
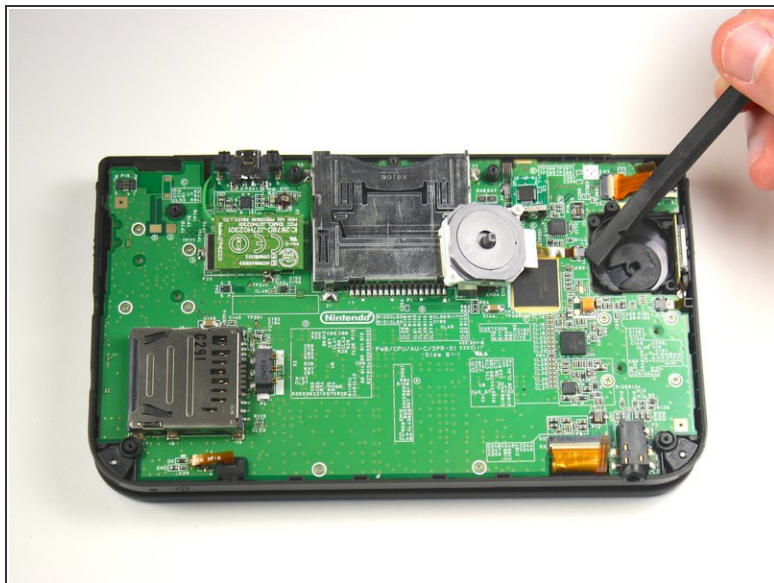
- Position the device such that the game cartridge slot is located at the top.
- Locate the circle pad on the right side of the device.
- Remove the two 7.5 mm screws on the upper left and the bottom right corners.

Step 10



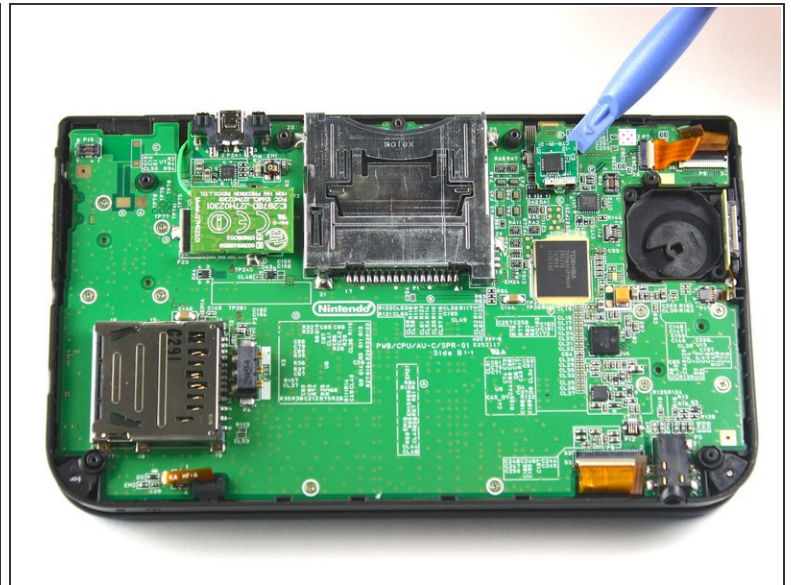
- Using a plastic opening tool pop off the circle pad joystick.
 - Do not use excessive force with the plastic opening tool. There is a ribbon attaching the circle pad joystick to the motherboard that will remain attached.
- ⓘ There is a loose washer located in between the circle pad joystick and the circle pad. Use caution and do not lose this piece.

Step 11



- Using the flat head side of the spudger carefully lift up the retaining flap that attaches the circle pad ribbon to the motherboard.
- Remove the ribbon and circle pad joystick.

Step 12 — IR Board



- Position the device such that the game cartridge slot is located at the top.
- Locate the IR board located on the upper right side of the motherboard.
- ⚠ The IR board is installed *upside-down* in these photos by mistake. Installing it this way will result in your DS failing to start. Note the orientation of your IR board before you remove it, and reinstall it the same way.
- Remove the IR board with a plastic opening tool by inserting the tool below the IR board and gently prying up.

To reassemble your device, follow these instructions in reverse order.