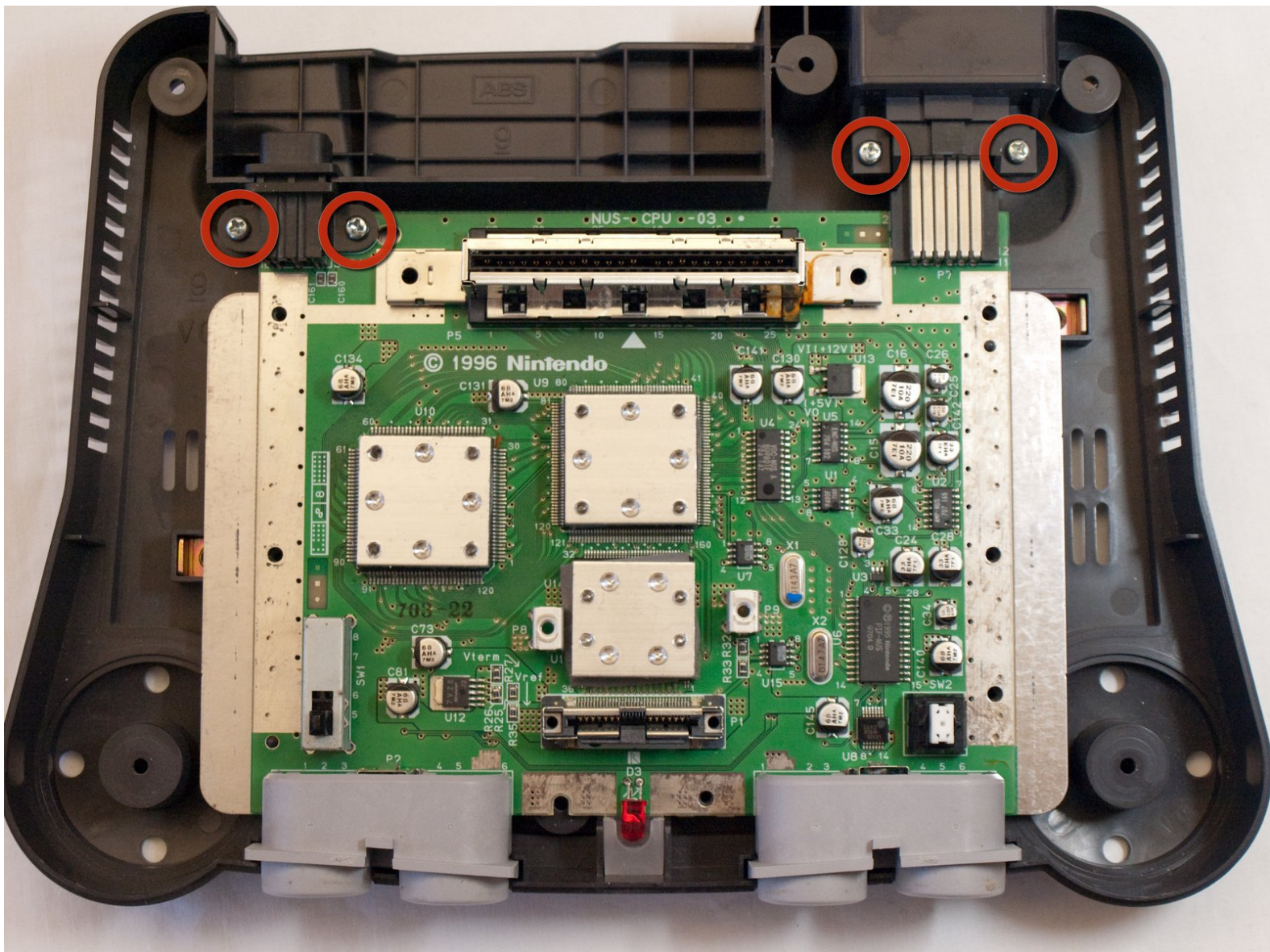




# Nintendo 64 Motherboard Replacement

Install replacement motherboard

Written By: tonymag28



---

# INTRODUCTION

This guide will show how to replace the Nintendo 64 motherboard.



## TOOLS:

- [Gamebit 4.5mm](#) (1)
  - [Phillips #2 Screwdriver](#) (1)
  - [Metal Spudger](#) (1)
  - [Phillips #1 Screwdriver](#) (1)
-

## Step 1 — Top Cover



- Remove the expansion pack cover by pushing in the tab and pulling out.

## Step 2



- ⓘ If your system uses a jumper pack, the same procedure applies to remove it.
- ⓘ A small spoon can be used in place of a spudger.
- Lever the expansion pack out using a metal spudger.



### Step 3



- Remove the six screws on the bottom side indicated in the example with a gamebit head or screwdriver.

### Step 4



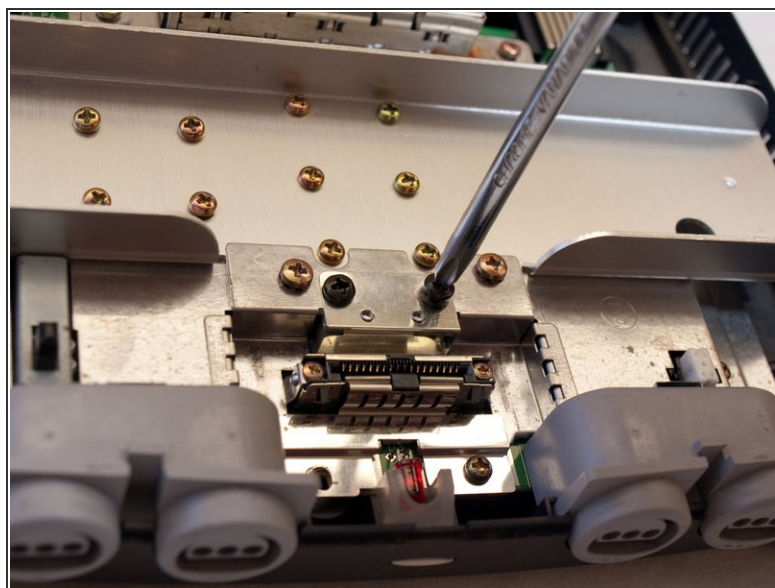
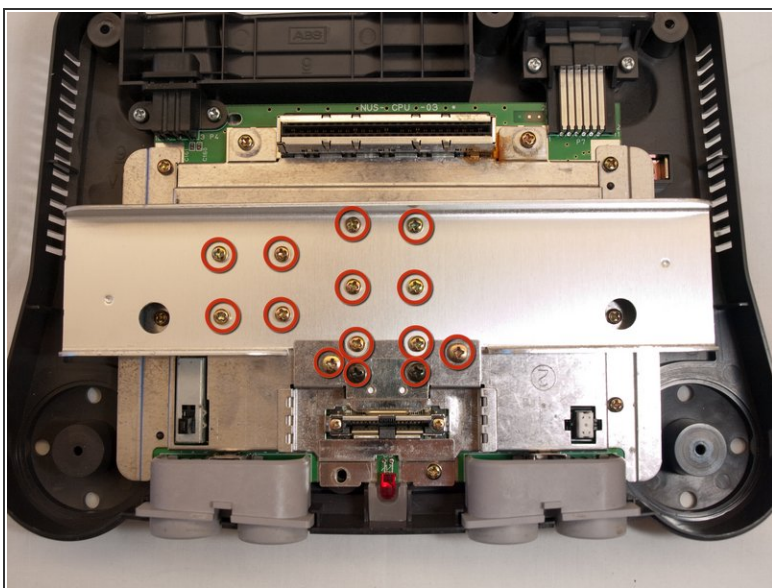
- Remove the two front feet of the N64.

## Step 5



- Rotate to top side up and lift off top cover.

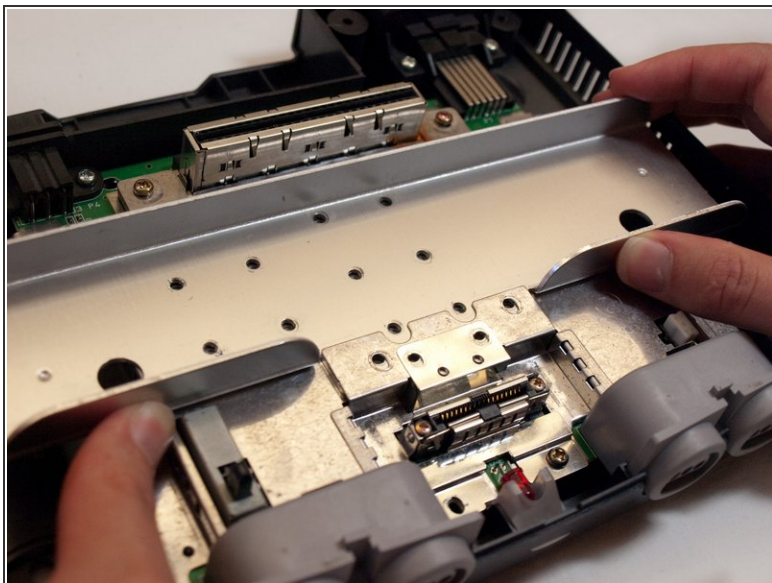
## Step 6 — Metal Plate



- Remove the fourteen screws indicated in the example using the larger Phillips screwdriver.

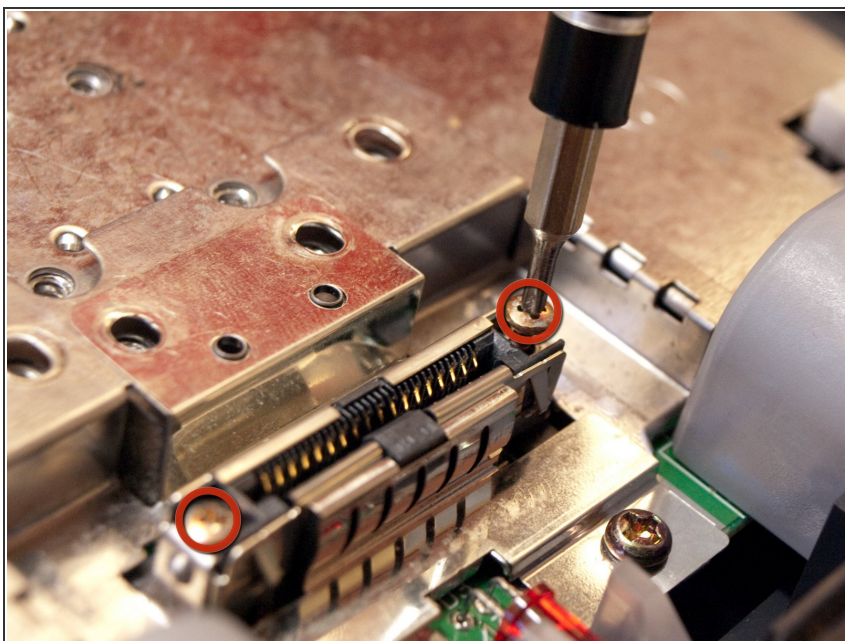


## Step 7



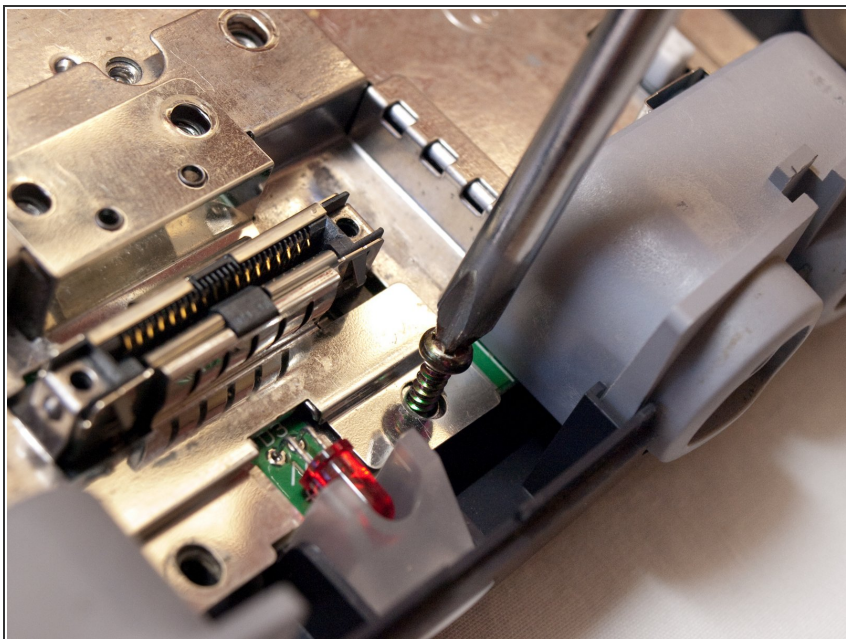
- Remove the metal plate indicated in the example by sliding it back and then lifting it up.

## Step 8



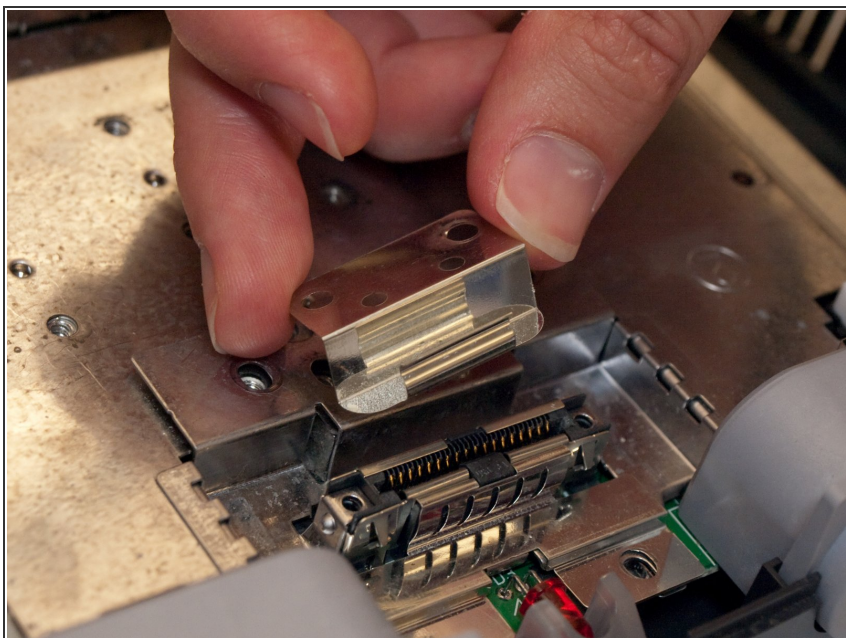
- Remove the two screws indicated in the example using the smaller Phillips screwdriver.

## Step 9



- Remove the screw to the right of the LED light using the larger Phillips screwdriver.

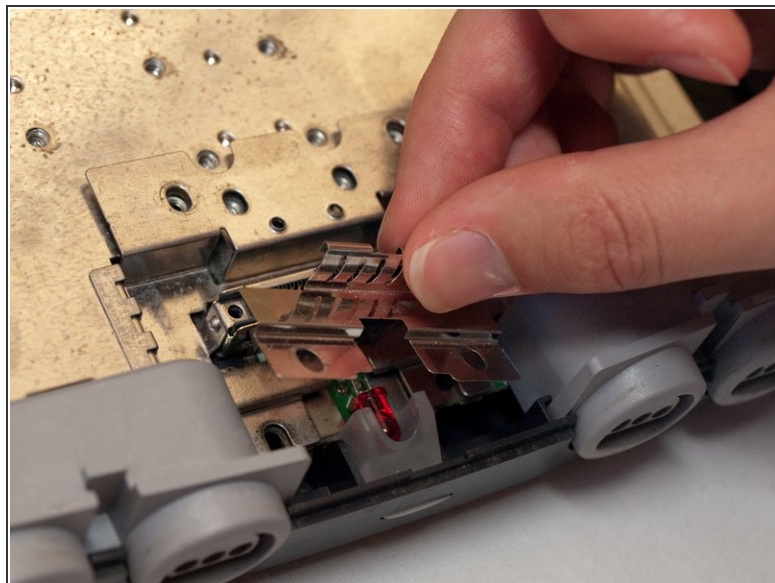
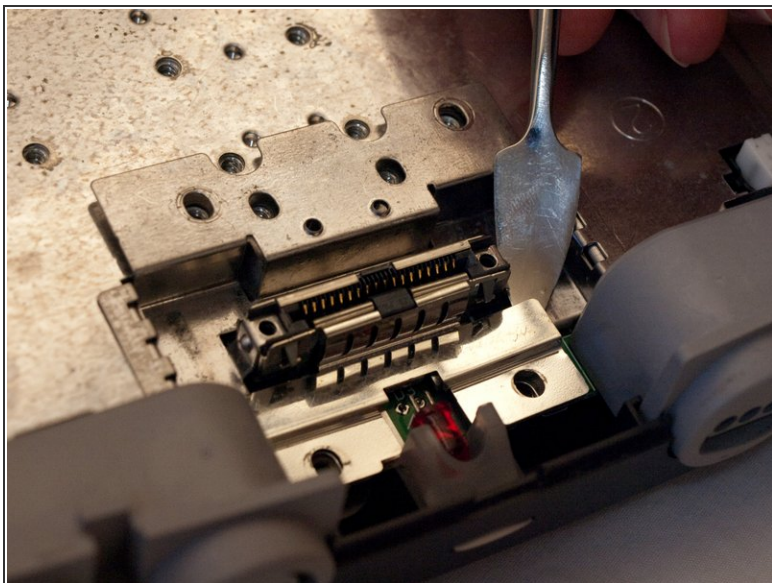
## Step 10



- Remove the small metal bracket from the back of the expansion pack slot.

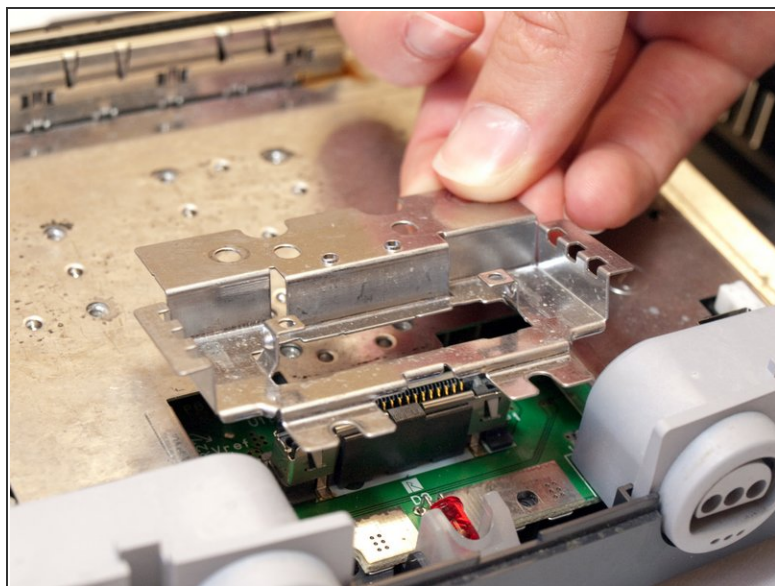
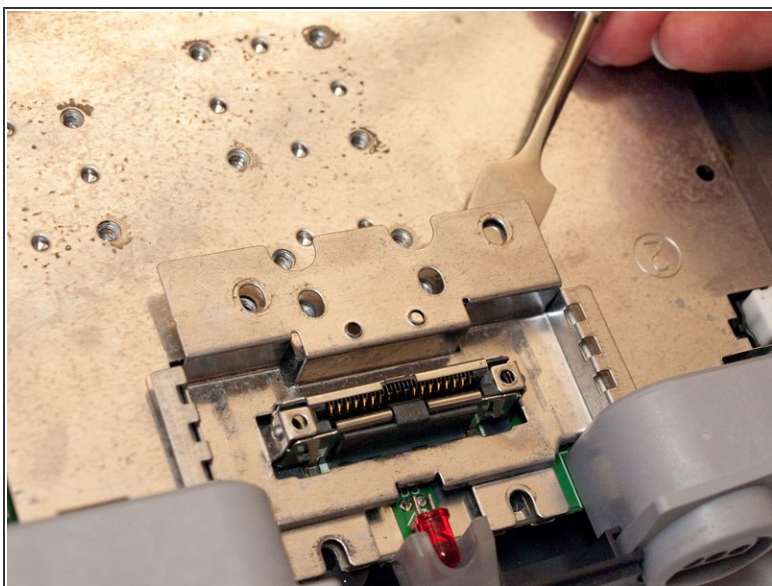


## Step 11



- Remove the small metal bracket from the front of the expansion pack slot with the metal spudger.

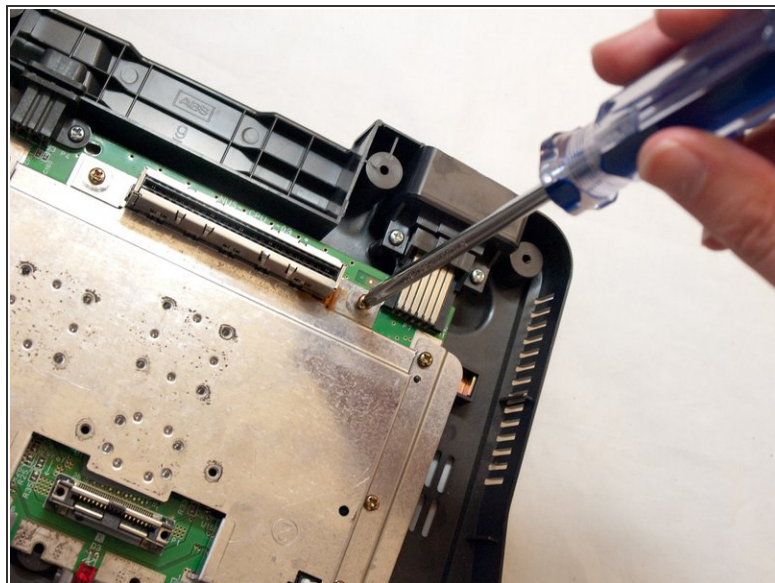
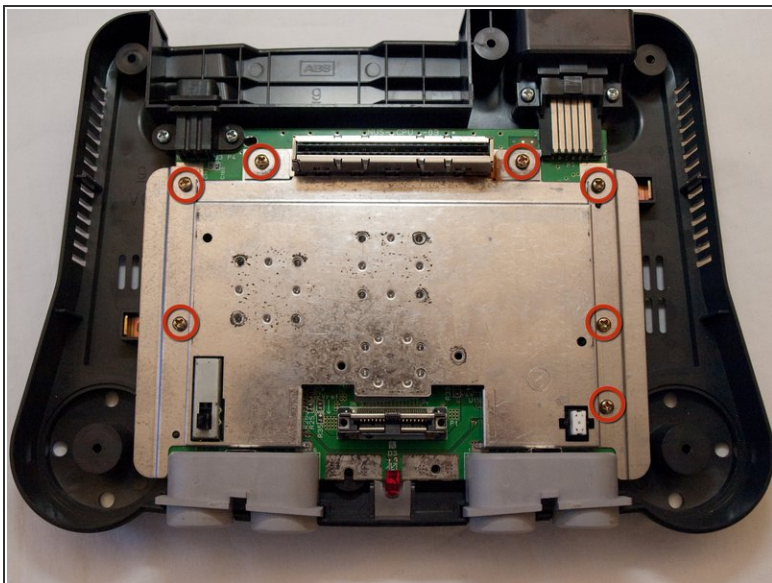
## Step 12



- Remove the small metal bracket behind the expansion slot using the spudger.

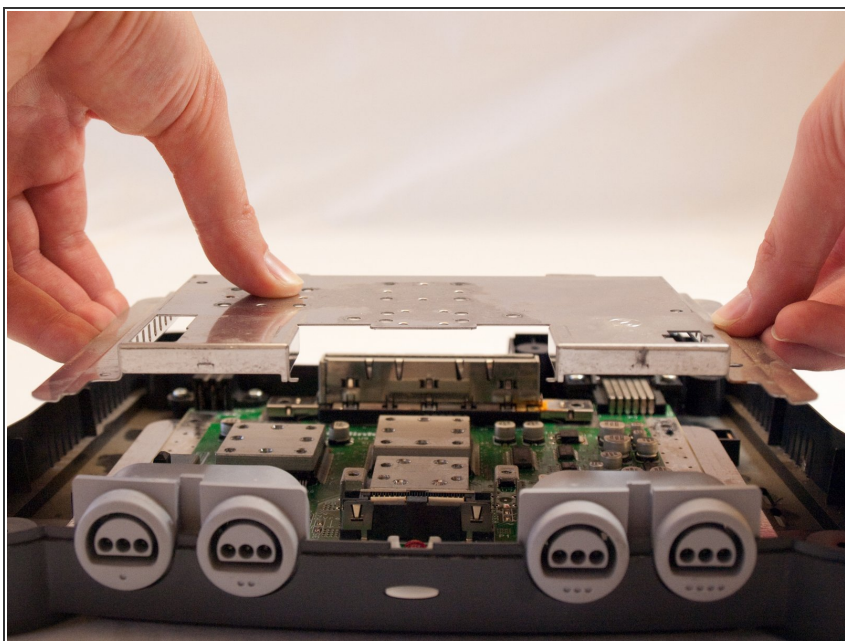


## Step 13



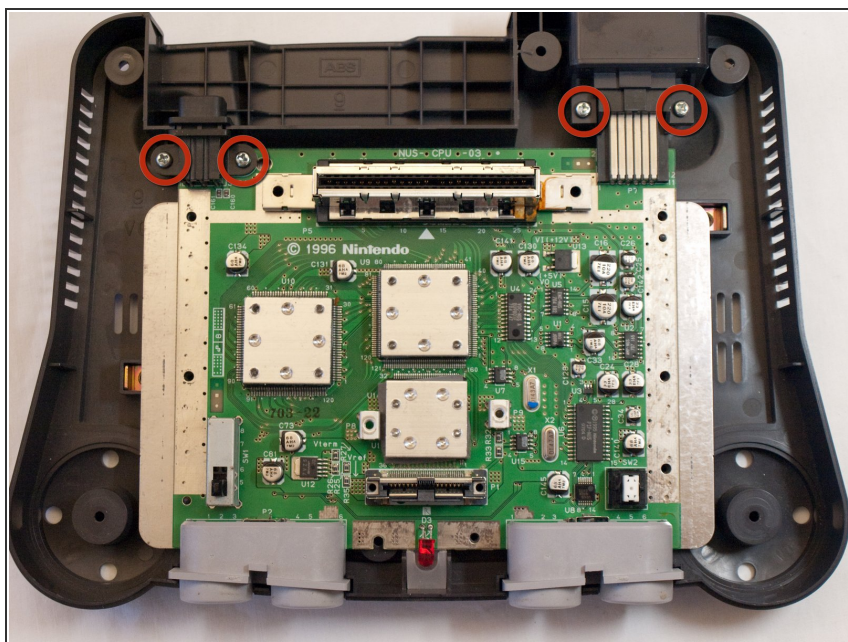
- Remove the seven screws indicated in the example using the larger Phillips screwdriver.

## Step 14



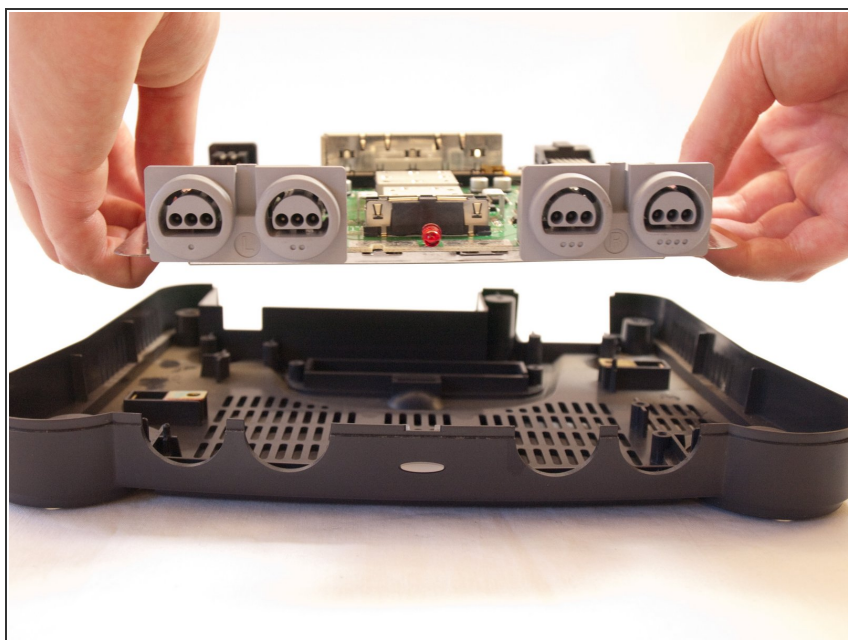
- Lift off and remove the metal plate as indicated in the example.

## Step 15 — Motherboard



- Remove the four screws indicated using the #1 Phillips screwdriver.

## Step 16 — Motherboard removal



- Lift up and remove the motherboard.

To reassemble your device, follow these instructions in reverse order.