



Nintendo DS Back Panel Replacement

This guide will walk you through removing the back panel on the Nintendo DS

Written By: dnguye26



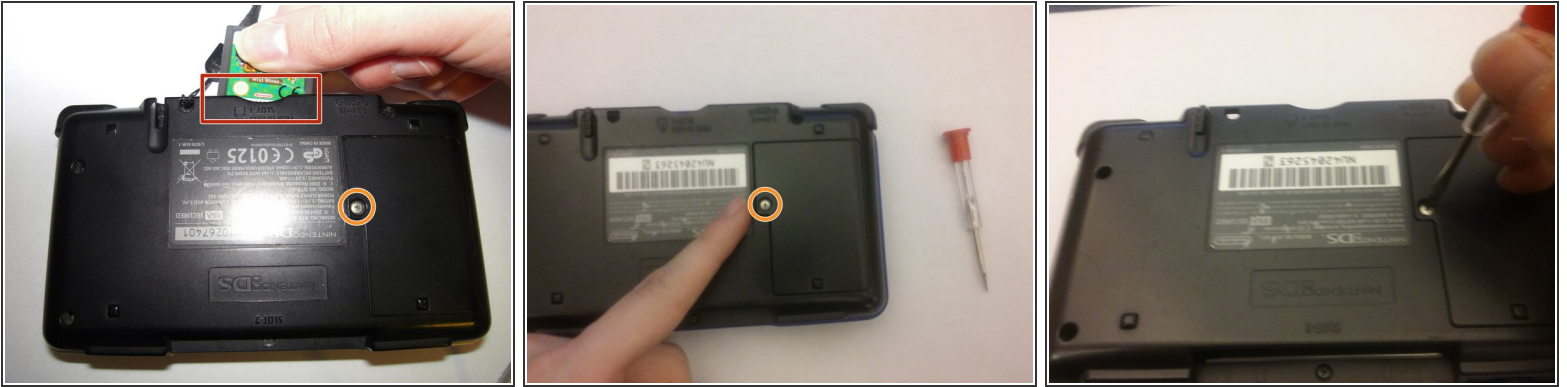
INTRODUCTION

Removing the back panel is simple, provided you have the correct screwdriver. Nintendo uses a special Tri-wing bit for the case, be sure you have one of these before disassembling!

TOOLS:

- [iFixit Opening Tools](#) (1)
 - [Spudger](#) (1)
 - [Phillips #00 Screwdriver](#) (1)
 - [Tri-wing Screwdriver](#) (1)
-

Step 1 — Battery



- Remove the cartridge from the console.
- Use a Phillips #00 Screwdriver to remove the screw securing the battery door to the rear case.
- Remove the battery door.

Step 2



- Use a plastic opening tool or spudger to pry out the battery from the bottom. If a plastic open tool or spudger isn't available, your fingernails may work.

Step 3



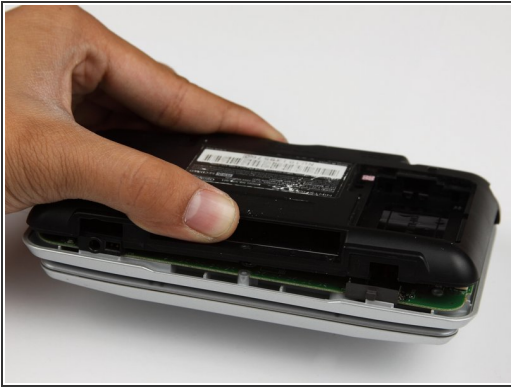
- Remove the battery from the Nintendo DS.

Step 4 — Back Panel



- Remove the seven Y0 screws located on the back.
- ⓘ It might be helpful to remove the strap from the hole to access the top left screw.

Step 5



- With your hands, pry the back panel off the main case.
- Separate the back from the front, and set it aside.

To reassemble your device, follow these instructions in reverse order.