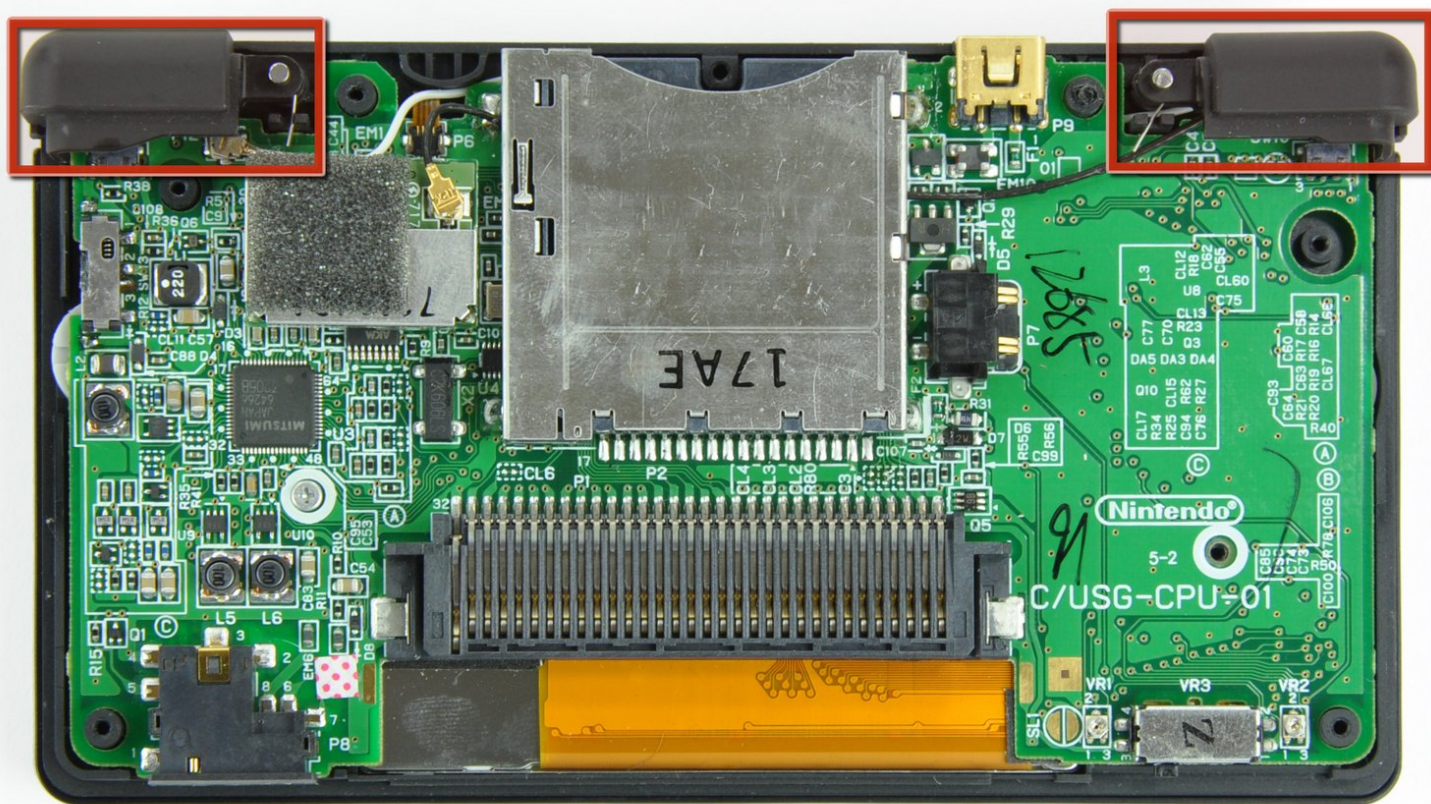




# Nintendo DS Lite Trigger Buttons Replacement

Replacement of the Nintendo DS Lite trigger buttons.

Written By: Matthew Newsom



# INTRODUCTION

Replace the trigger buttons on your Nintendo DS Lite and get back in the game!



## TOOLS:

- [Phillips #00 Screwdriver](#) (1)
  - [Spudger](#) (1)
  - [Tri-wing Screwdriver](#) (1)
-

## Step 1 — Battery



- Unscrew the Phillips screw securing the battery cover to the lower case.
- ⓘ The screw remains captive to the battery cover.
- Pry the battery cover upward with a spudger or fingernail, and lift out of the lower case.

## Step 2



- Wedge the edge of a spudger in between the side of the battery and the lower case housing and pry upward to dislodge the battery.
- Remove the battery from the DS Lite.



## Step 3 — Lower Case



- Use the tip of a spudger to pry both rubber feet off the DS Lite.

## Step 4



- Remove the following screws securing the lower case to the body of the DS Lite:
  - Two 4.3 mm gold Phillips screws
  - One 3.9 mm black Tri-Wing screw
  - One 3.3 mm silver Phillips screw
  - Three 5.5 mm silver Tri-Wing screws

## Step 5



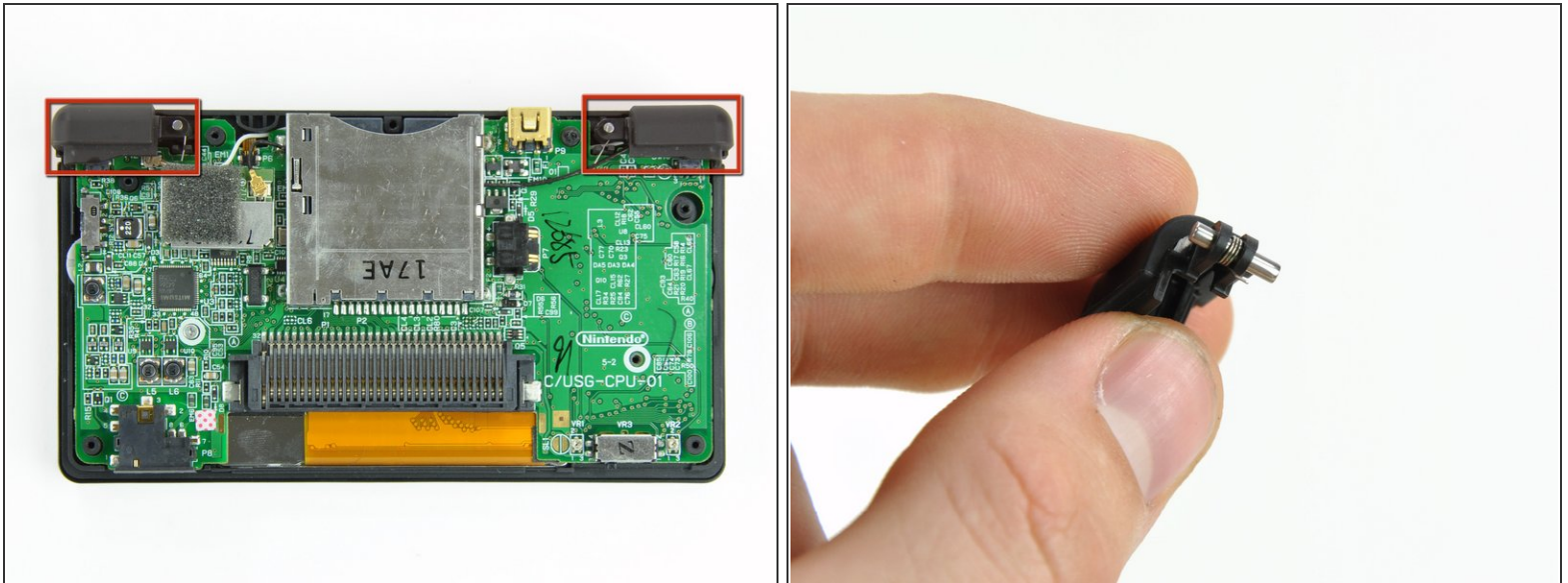
- Insert the edge of a spudger in between the lower and upper case near the top right corner of the DS Lite.
- Carefully run the spudger along the right edge of the DS Lite, creating an opening in the process.
- Continue running the spudger along the backside of the DS Lite until the majority of the lower case has been separated from the upper case.

## Step 6



- Lift the lower case away from the rest of the DS Lite.
- ⚠ Pull carefully. Some units are sealed with adhesive, and pulling too hard can damage the power switch.

## Step 7 — Trigger Buttons



- Lift both trigger buttons out of the DS Lite.
- ✦ The trigger buttons are held in very loosely by small metal pegs and springs. Don't lose track of these pieces.
- ⓘ The second picture shows the correct configuration of the trigger assembly for reassembly purposes.

To reassemble your device, follow these instructions in reverse order.