



Nintendo DS Lite Wi-Fi Board Replacement

Replacement of Nintendo DS Lite Wi-Fi board

Written By: Matthew Newsom



INTRODUCTION

Having trouble connecting to the internet on your Nintendo DS Lite? Replace the Wi-Fi board to get reconnected.

TOOLS:

- [Phillips #00 Screwdriver](#) (1)
 - [Spudger](#) (1)
 - [Tri-wing Screwdriver](#) (1)
-

Step 1 — Battery



- Unscrew the Phillips screw securing the battery cover to the lower case.
- ⓘ The screw remains captive to the battery cover.
- Pry the battery cover upward with a spudger or fingernail, and lift out of the lower case.

Step 2



- Wedge the edge of a spudger in between the side of the battery and the lower case housing and pry upward to dislodge the battery.
- Remove the battery from the DS Lite.

Step 3 — Lower Case



- Use the tip of a spudger to pry both rubber feet off the DS Lite.

Step 4



- Remove the following screws securing the lower case to the body of the DS Lite:
 - Two 4.3 mm gold Phillips screws
 - One 3.9 mm black Tri-Wing screw
 - One 3.3 mm silver Phillips screw
 - Three 5.5 mm silver Tri-Wing screws

Step 5



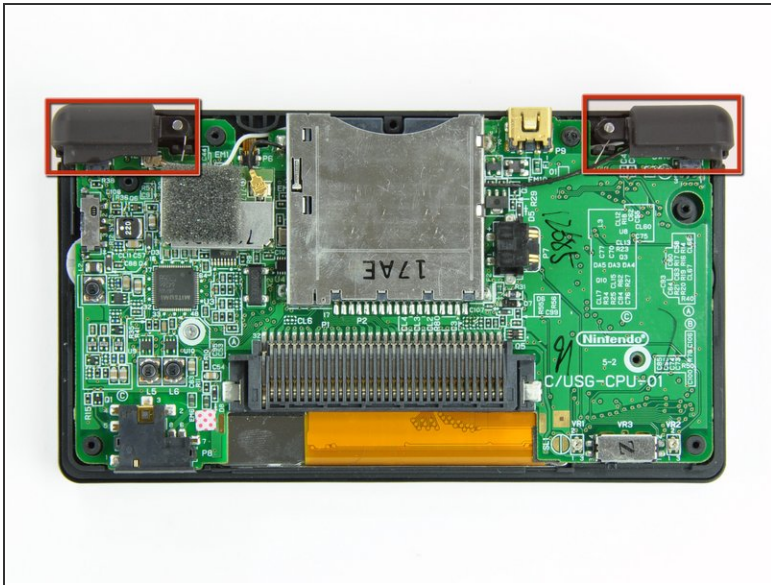
- Insert the edge of a spudger in between the lower and upper case near the top right corner of the DS Lite.
- Carefully run the spudger along the right edge of the DS Lite, creating an opening in the process.
- Continue running the spudger along the backside of the DS Lite until the majority of the lower case has been separated from the upper case.

Step 6



- Lift the lower case away from the rest of the DS Lite.
- ⚠ Pull carefully. Some units are sealed with adhesive, and pulling too hard can damage the power switch.

Step 7 — Trigger Buttons



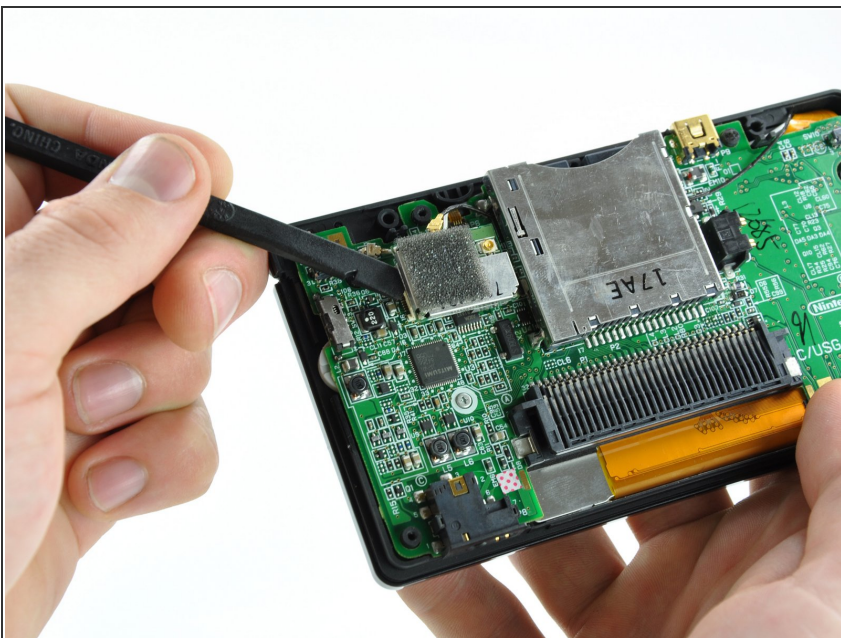
- Lift both trigger buttons out of the DS Lite.
- ✦ The trigger buttons are held in very loosely by small metal pegs and springs. Don't lose track of these pieces.
- ⓘ The second picture shows the correct configuration of the trigger assembly for reassembly purposes.

Step 8 — Wi-Fi Board



- Use the flat edge of a spudger to pry the Wi-Fi antenna connector straight up from its socket on the Wi-Fi board.

Step 9



- Use the flat edge of a spudger to pry the Wi-Fi board connector straight up from its socket on the motherboard.

Step 10



- Use the flat edge of a spudger to separate the right edge of the Wi-Fi board from the motherboard.
- ⓘ The Wi-Fi board is secured to the motherboard with a layer of adhesive.
- Remove the Wi-Fi board from the DS Lite.

To reassemble your device, follow these instructions in reverse order.