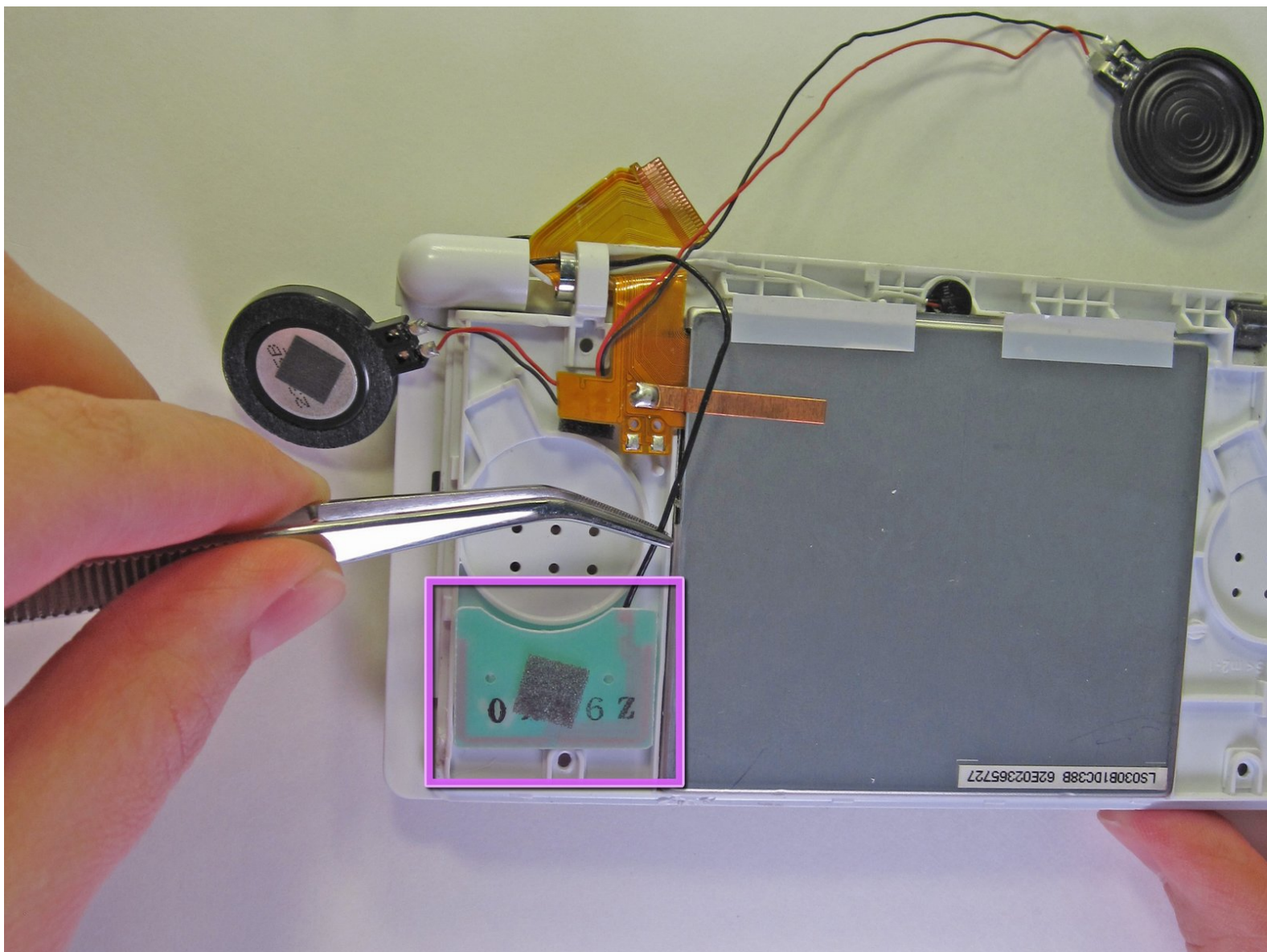




Nintendo DS Lite Wireless Antenna Replacement

Written By: justin chadwick



INTRODUCTION

This guide has been updated by iFixit staff! Read the new, official guide [here](#).

This guide will show you how to replace the wireless antenna in your DS Lite.

TOOLS:

- [iFixit Opening Tools](#) (1)
 - [Phillips #00 Screwdriver](#) (1)
 - [Push Pin](#) (1)
 - [Tweezers](#) (1)
-

Step 1 — Battery



- Place your device upside down and locate the battery compartment.
- Find the phillips head screw securing the battery cover in the bottom right hand corner of the device.
- ✦ Loosen the screw enough to remove the battery cover but leave the screw in the cover for reassembly.
- ❗ Use only a phillips screwdriver to remove screw.

Step 2



- Slowly remove the battery cover with the iFixit opening tool.
- ⚠ Make sure to remove the cover carefully to keep from losing phillips screw in the cover. It will be needed for reassembly.

Step 3



- Use the iFixit opening tool to carefully pry the battery out of the case.
- After the old battery is removed replace it with a new battery facing the same direction as when the cover was opened.
- ① For some devices, you may be able to remove the battery by flipping the DS over and letting the battery fall into your hand.

Step 4



- Place the battery cover on the top and gently screw in the phillips head screw to firmly secure the battery.
- ⓘ Use only the phillips screwdriver to tighten the screw.
- After this step you will have successfully replaced your Nintendo DS battery.

Step 5 — Disassembling Nintendo DS Lite Bottom Case



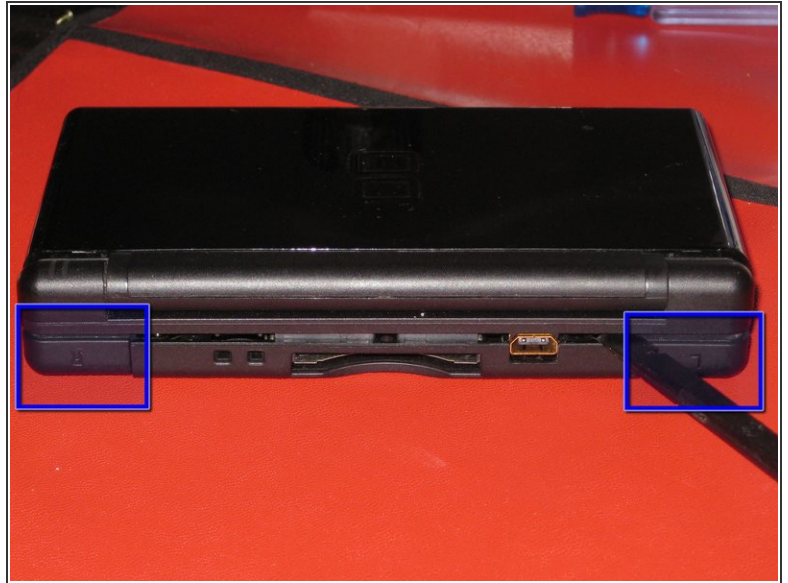
- Remove the following 7 screws securing the lower case to the DS Lite:
 - 3 silver tri-wing screws (5mm long)
 - 1 black tri-wing screw (4mm)
 - 2 gold Phillips screws (4mm)
 - 1 silver Phillips screw (3mm)
 - Do not remove the silver PH screw (3mm) in the battery compartment yet. It holds the main PCB in place.

Step 6



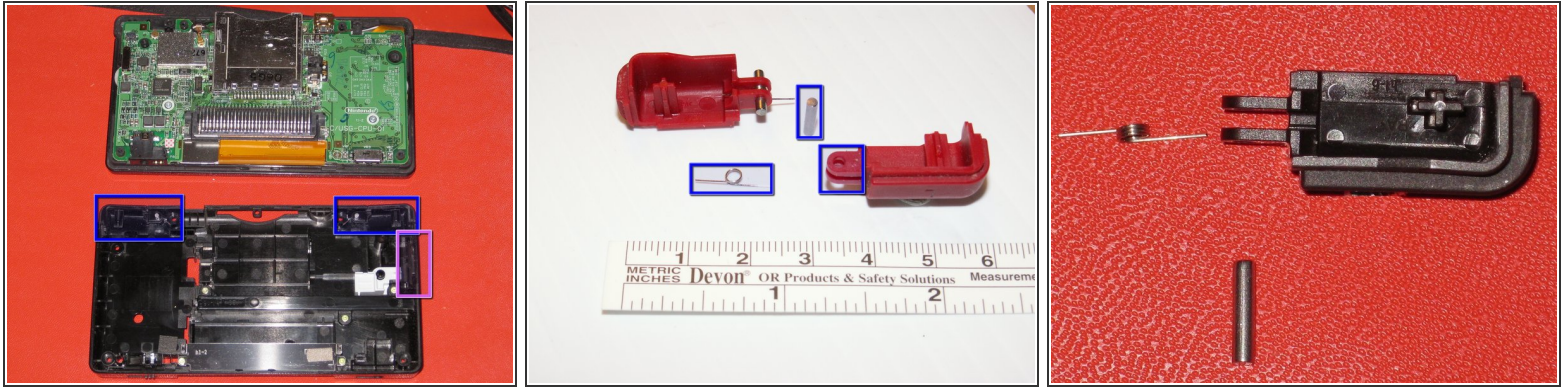
- Remove the plastic insert (or cartridge) from the lower slot (Slot 2).

Step 7



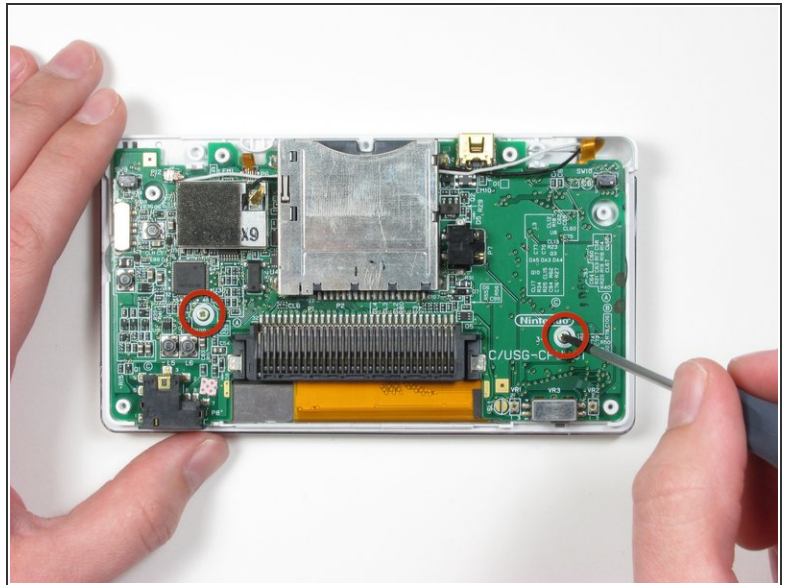
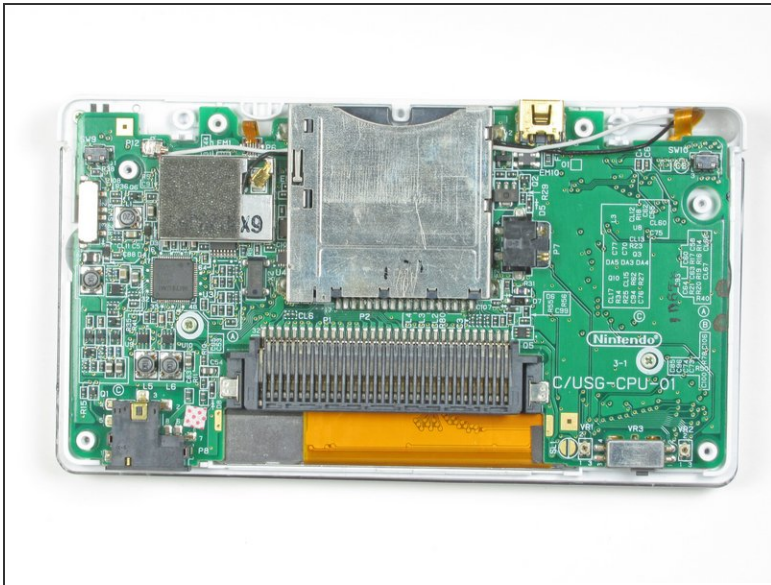
- Flip the unit over.
- Use a spudger to pry open the gap between the bottom case and the front panel. Work all the way around the case until the panel is free.
- Avoid touching the L and R shoulder buttons, because they pop off easily and are difficult to reassemble. Keeping the bottom case against your workbench will help hold them in place.

Step 8



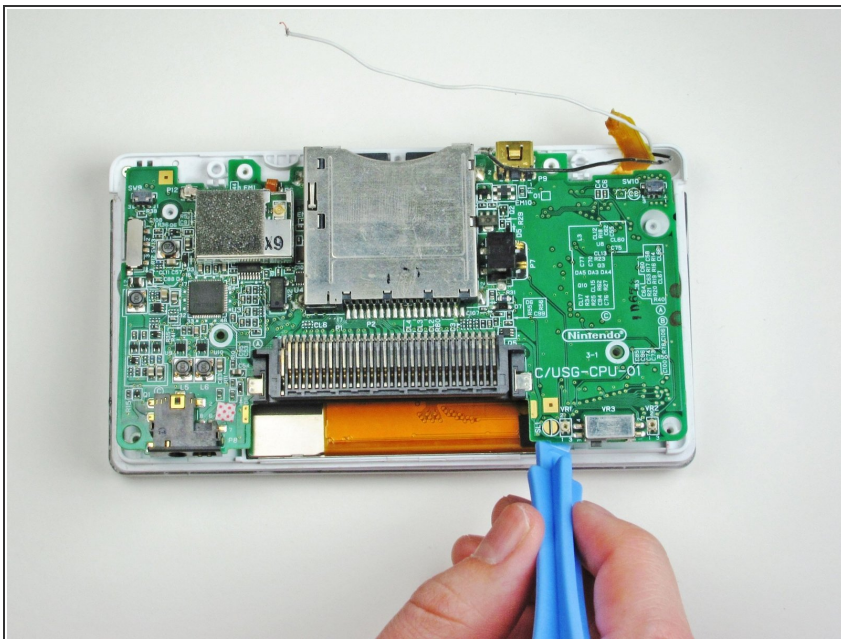
- Carefully separate the two pieces by hand.
- The two shoulder buttons are made up of three pieces -- the plastic button, a pin, and a spring. If they accidentally pop out while you are working, study the picture and make sure you put the spring in the correct position.
- When reassembling the cover, make sure that the power switch cover on the bottom case is in the off (down) position. Otherwise, the power switch cover can break the very fragile power switch upon reassembly.

Step 9 — Motherboard



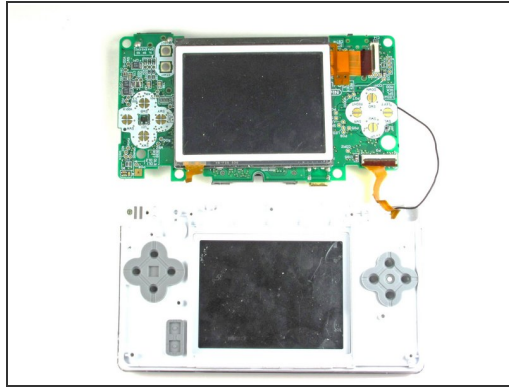
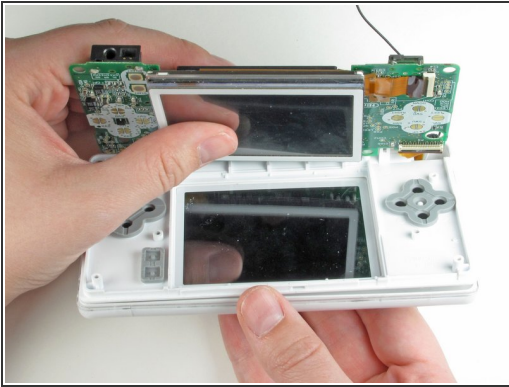
- Locate the two screws that attach the logic board to the device.
- Unscrew the two Phillips head screws.

Step 10



- With a plastic opening tool, gently separate the logic board from the device base.
- ⚠ The ribbon cable and two wires are still connected to the logic board.
- ⓘ The buttons may fall out, but can easily be put back in place.

Step 11



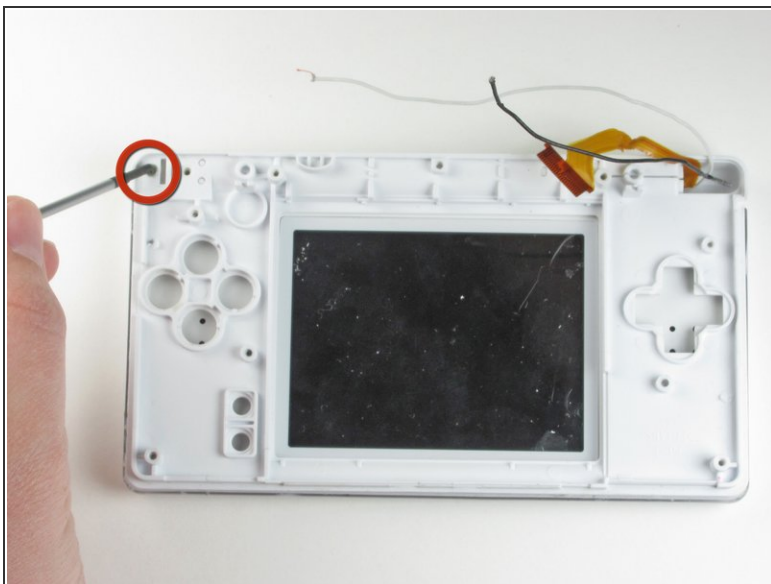
- Flip the logic board over so that the touch screen is facing up.
- Using metal tweezers, carefully disconnect the other ribbon cable that connects the touch screen with the logic board.

Step 12



- Using one finger nail or the plastic opening tool, carefully lift the brown securing flap of the connector. Then disconnect the ribbon cable that connects the logic board to the upper screen.

Step 13 — Top Screen



- Remove the two Phillips-head screws that hold the hinge in place.
- Open the system up (just like if you were about to use it normally).

Step 14



- After opening it, carefully unhinge them from each other by sliding the bottom piece to the left and the top piece to the right.

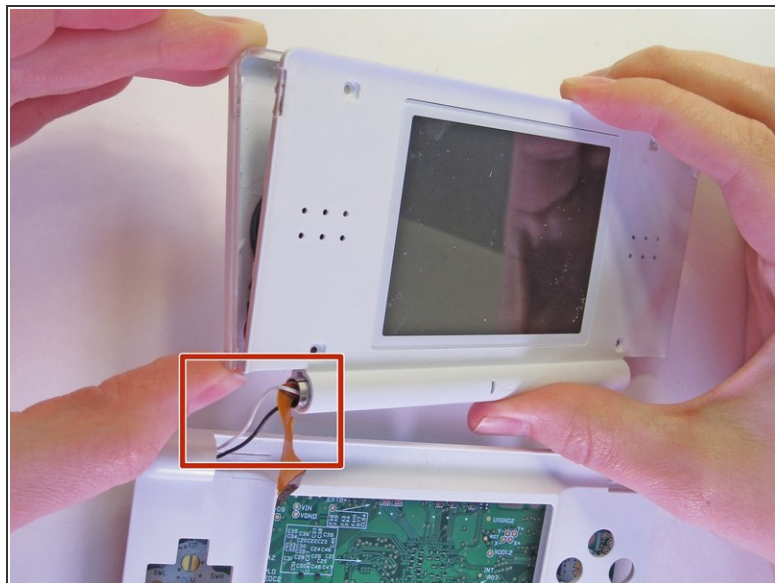
⚠ Be aware that you can pinch wires while doing this, so don't yank it apart.

Step 15



- Using a push pin, remove the four rubber bumpers located at the corners of the top screen.
- After removing the LEDs and pulling apart the hinge, remove the round hinge shaft. This should be in the top screen piece.

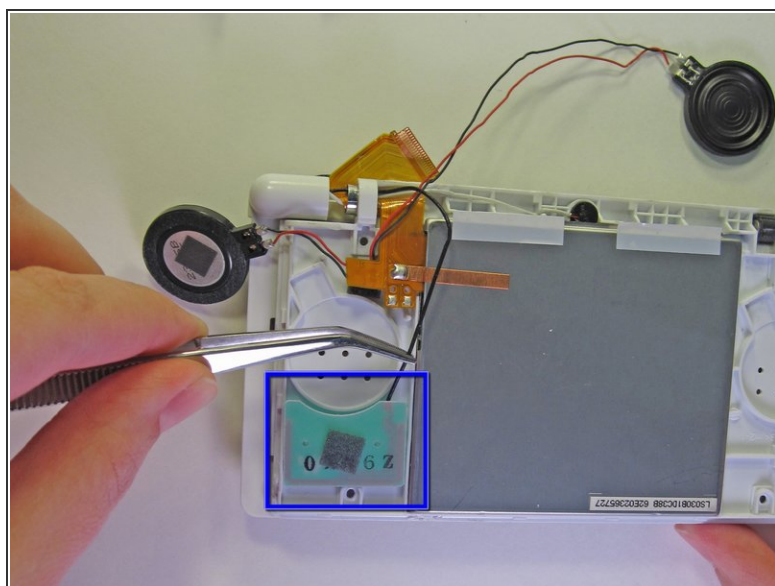
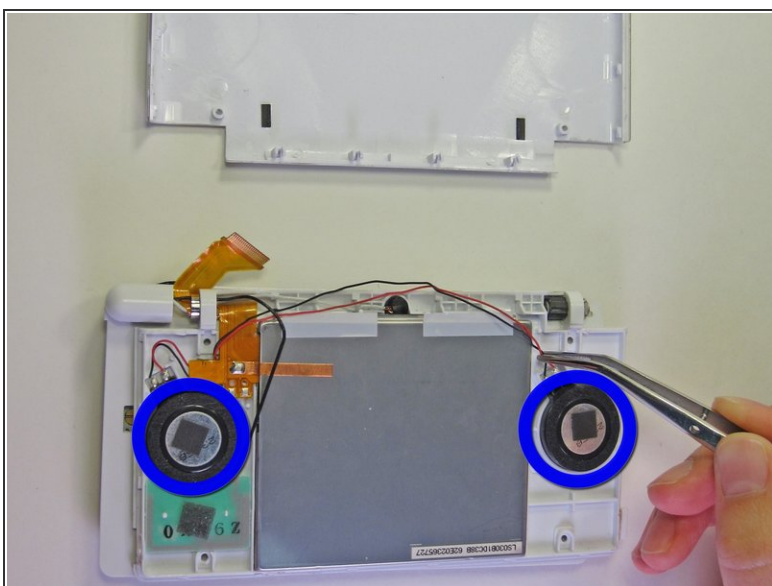
Step 16



- Unscrew the four Phillips-head screws and remove the top panel.

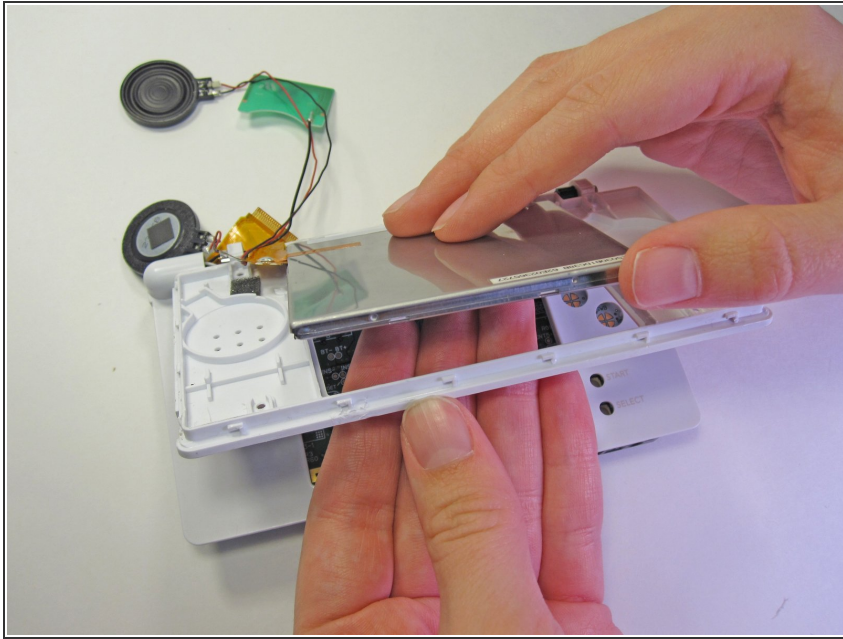
⚠ Be careful not to damage the wires and the ribbon cable.

Step 17



- Carefully remove the two speakers and the green wireless card from the top panel.

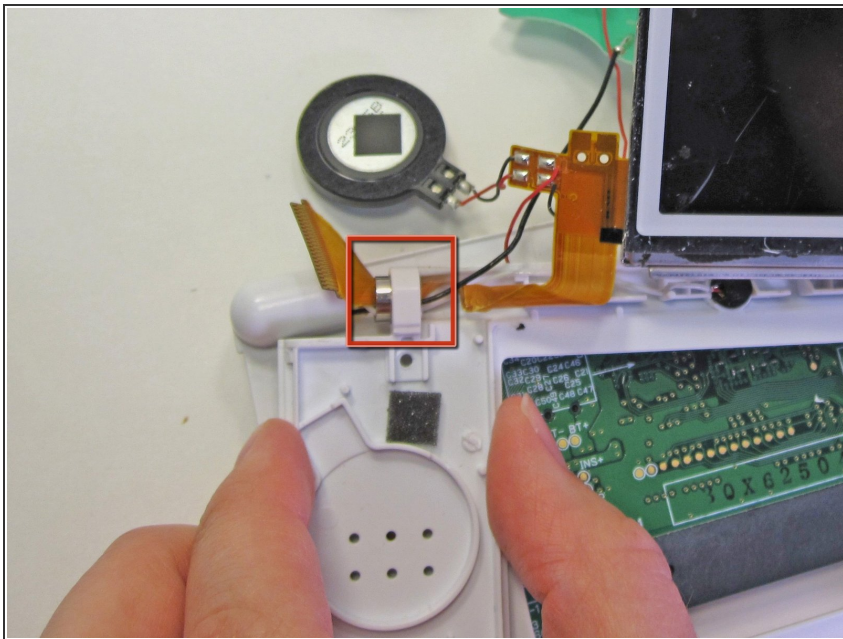
Step 18



- Remove the screen by orienting it face down and pushing up on the screen from underneath.

⚠ Don't press on the screen too hard, or you may crack the screen.

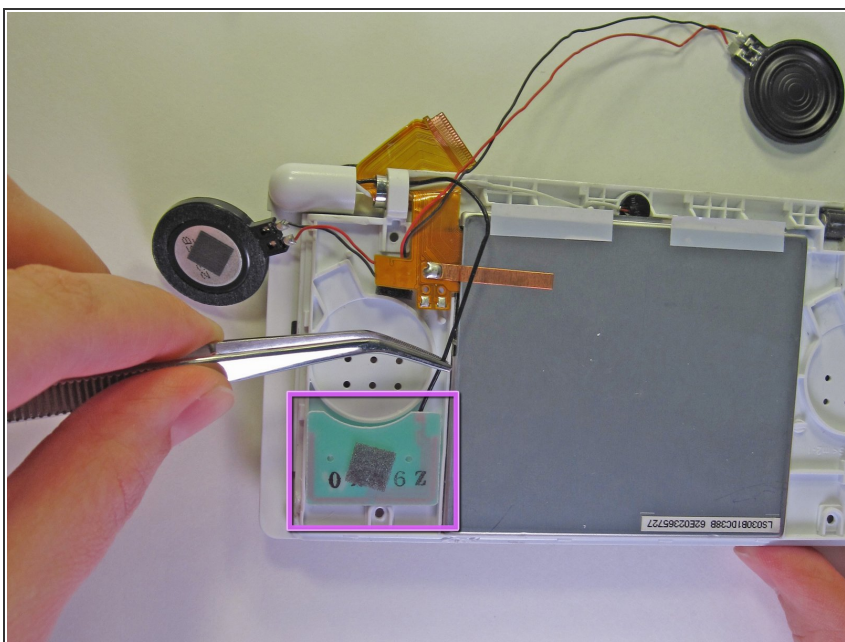
Step 19



- Carefully slide the ribbon cable through the clip.

⚠ Be careful not to damage the ribbon cable by pulling too hard or creasing it.

Step 20 — Wireless Antenna



- Carefully use a pair of tweezers to remove the wireless antenna.

⚠ Be careful that you do not damage the ribbon cable when pulling the black antenna wire through the hinge.

To reassemble your device, follow these instructions in reverse order.