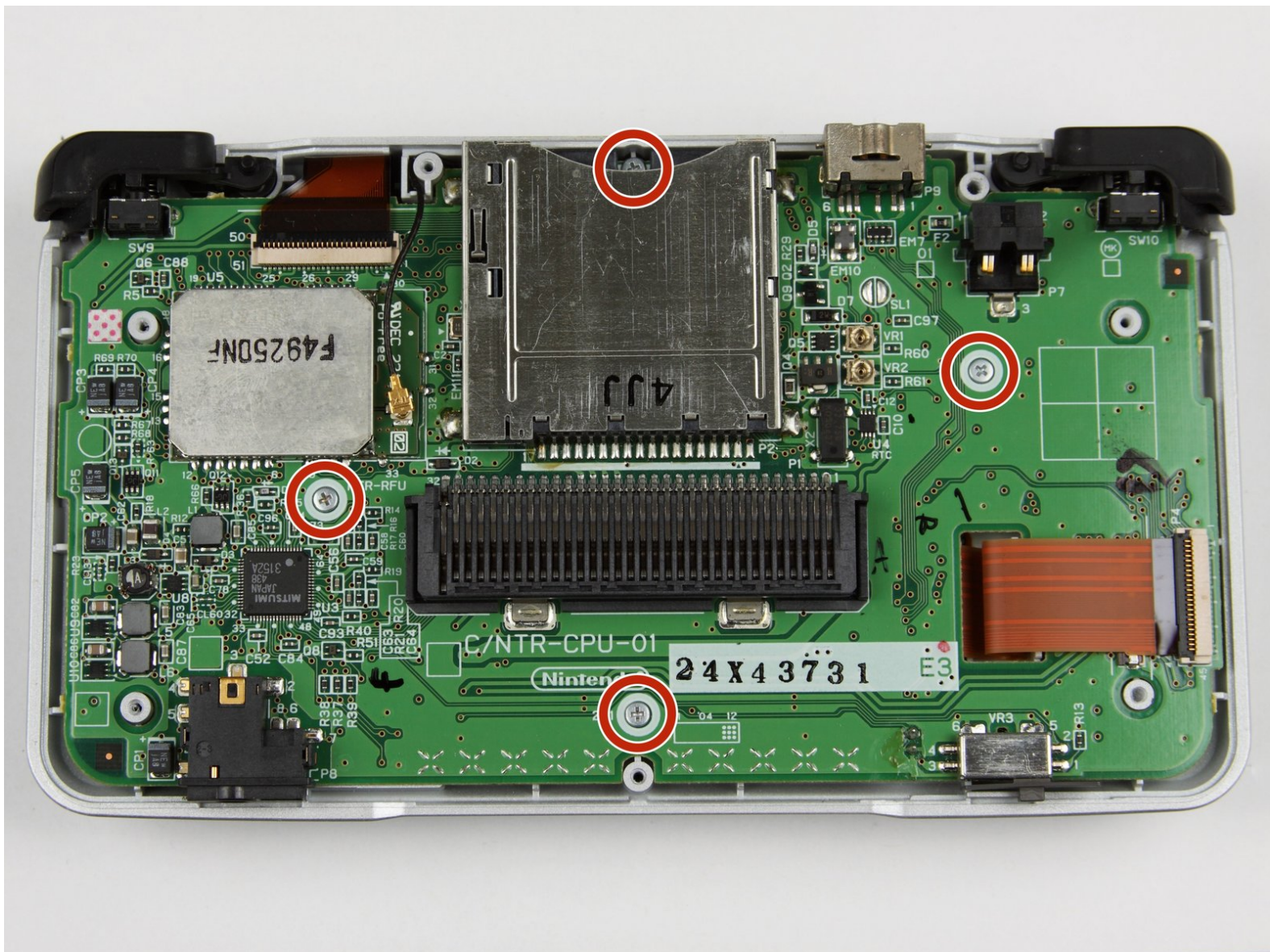




Nintendo DS Main Circuit Board Replacement

This guide will walk you through replacing the Main Circuit Board on the Nintendo DS.

Written By: kingdesmond



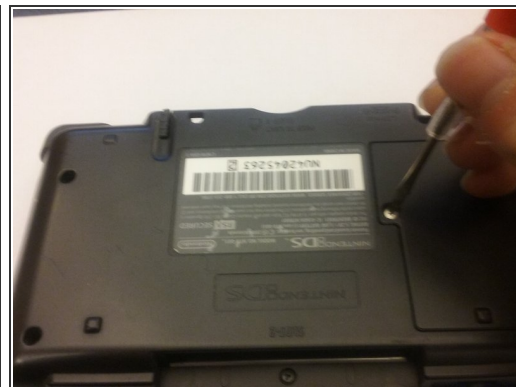
INTRODUCTION

The removal of the main logic board of the DS is essential to access the screens and to replace other components.

TOOLS:

- [iFixit Opening Tools](#) (1)
 - [Spudger](#) (1)
 - [Phillips #00 Screwdriver](#) (1)
 - [Tri-wing Screwdriver](#) (1)
 - [Tweezers](#) (1)
-

Step 1 — Battery



- Remove the cartridge from the console.
- Use a Phillips #00 Screwdriver to remove the screw securing the battery door to the rear case.
- Remove the battery door.

Step 2



- Use a plastic opening tool or spudger to pry out the battery from the bottom. If a plastic open tool or spudger isn't available, your fingernails may work.

Step 3



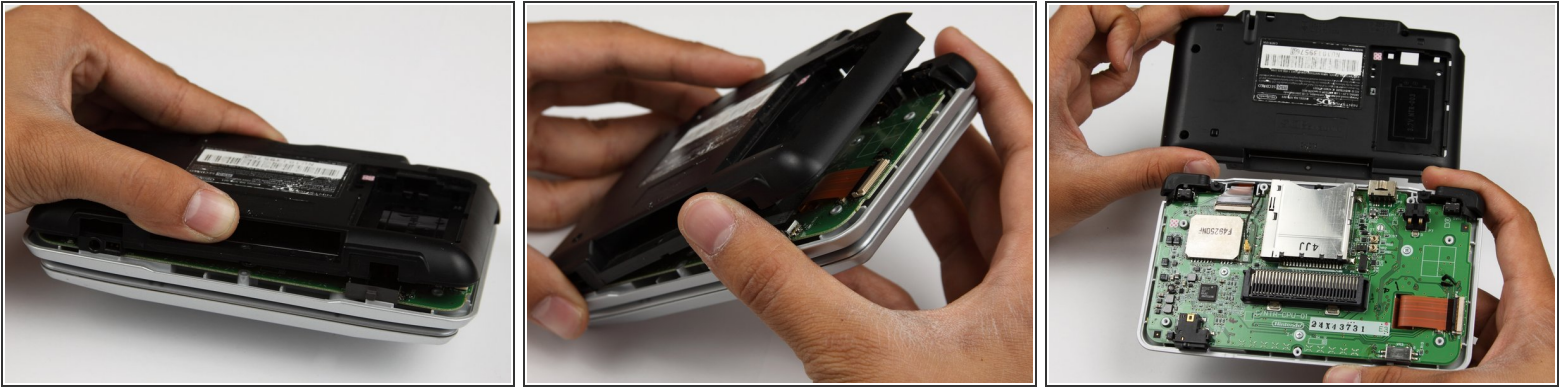
- Remove the battery from the Nintendo DS.

Step 4 — Back Panel



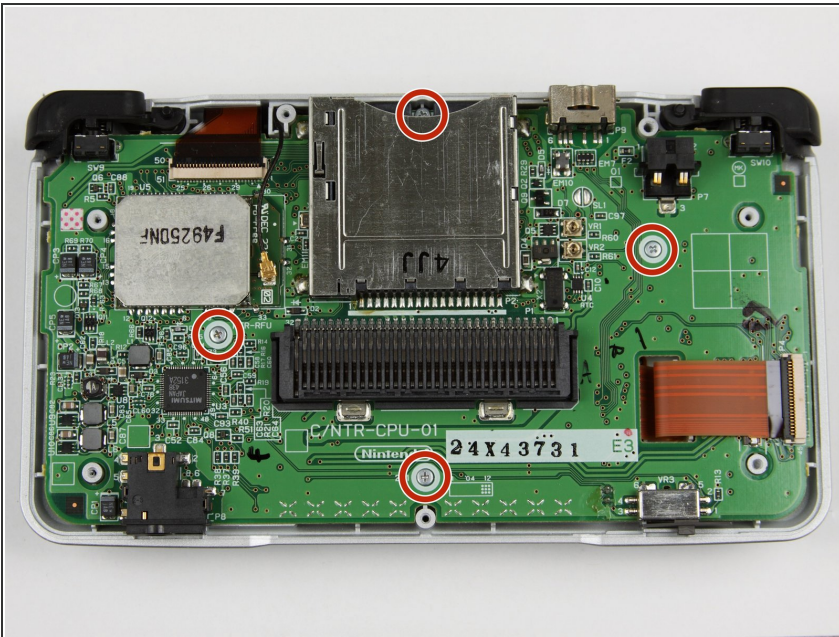
- Remove the seven Y0 screws located on the back.
- ⓘ It might be helpful to remove the strap from the hole to access the top left screw.

Step 5



- With your hands, pry the back panel off the main case.
- Separate the back from the front, and set it aside.

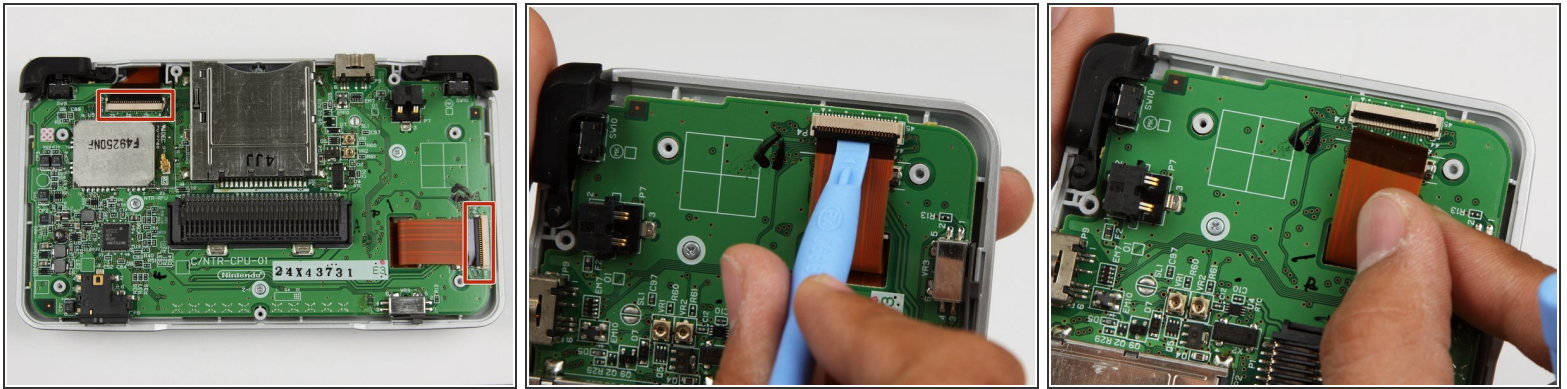
Step 6 — Main Circuit Board



- Using a Phillips #00 screwdriver, remove the four screws on the circuit board.

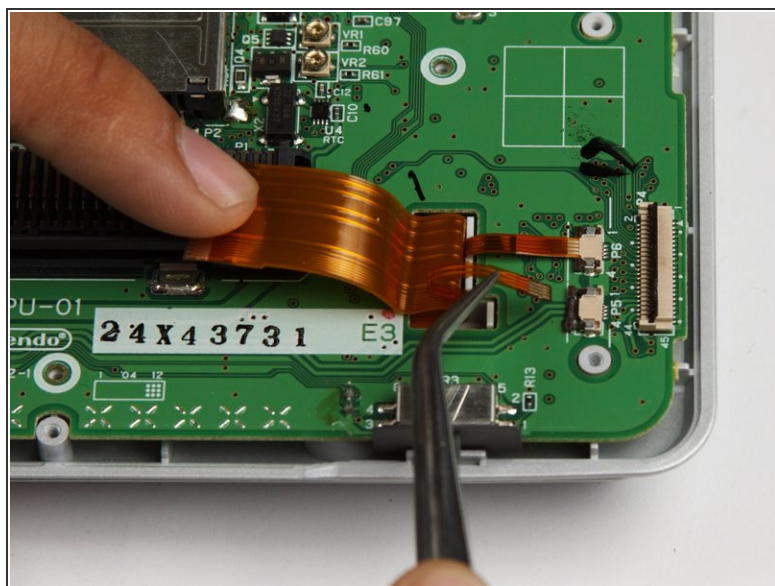
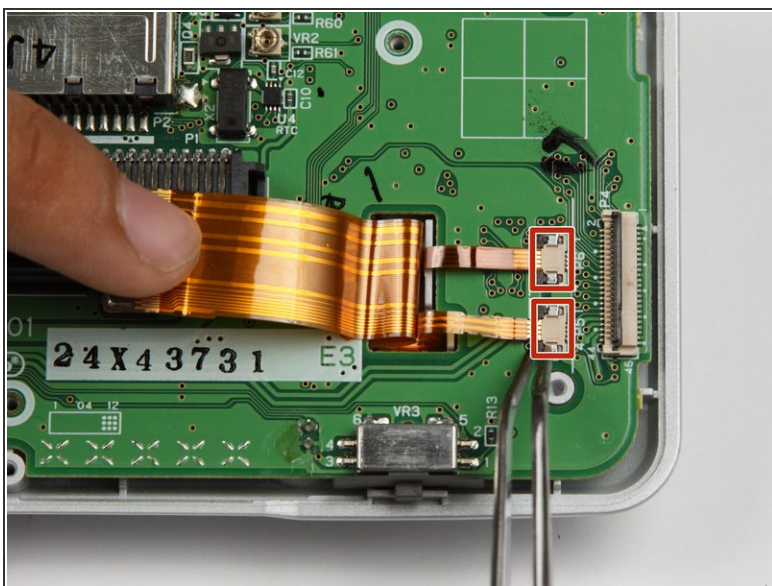
⚠ Be careful NOT to slip with the screwdriver, you can damage the circuit board!

Step 7



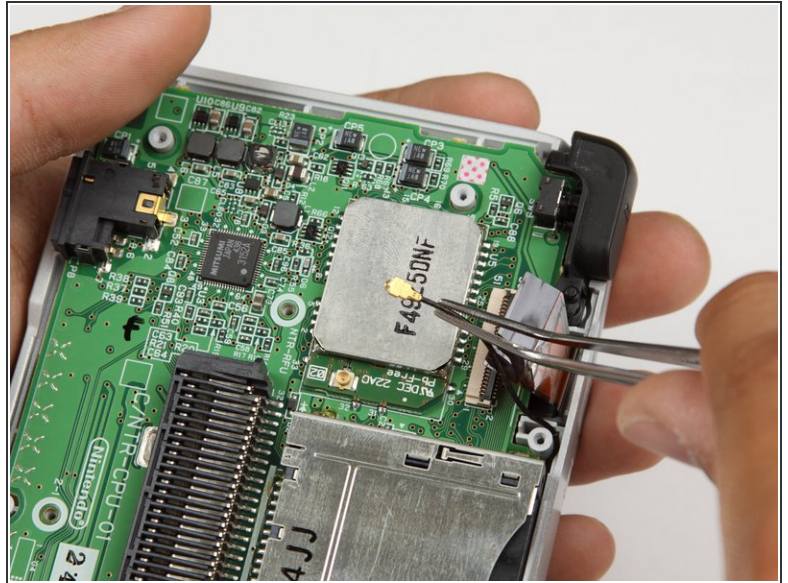
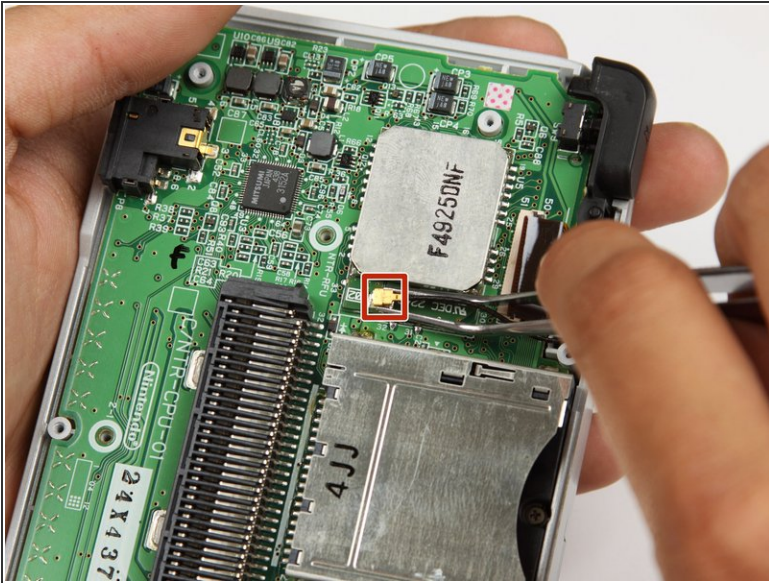
- Unlock the two large ribbon cables by moving the black clip up.
 - Carefully pull the ribbon cables down and out with your fingers.
- ⚠ Do not use pliers to pull the cables, as they can be damaged easily.

Step 8



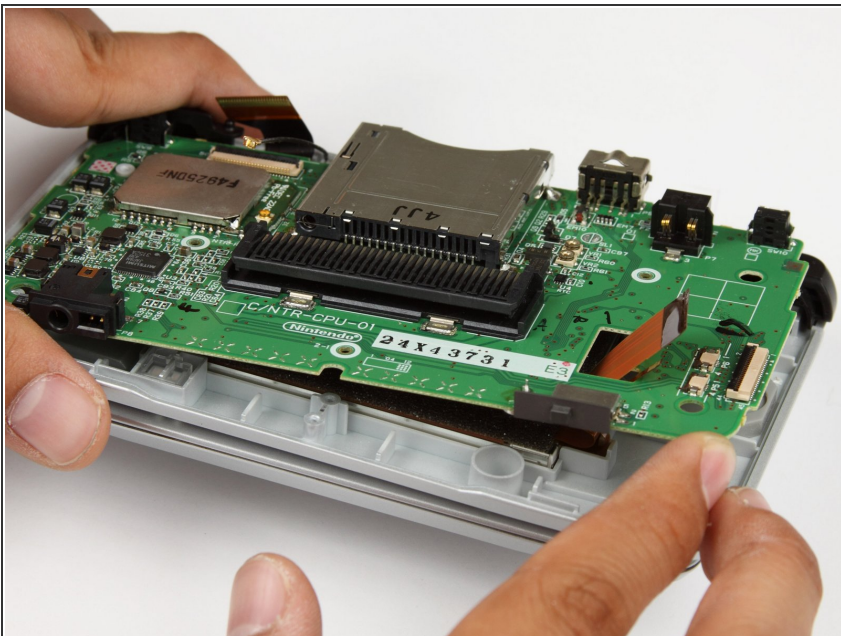
- Locate the two small ribbon cables, beneath the rightmost large ribbon cable.
 - Slide the locks for the small ribbon cables down to the side, and remove the cables.
- i* It may be useful to use tweezers to remove the small ribbon cables.
- !** Be careful not to damage the delicate ribbon cables.

Step 9



- Locate the Wifi antenna pigtail connector.
- Remove the antenna by grasping it at the head with tweezers. Using a slight rocking motion, pull up to dislodge the connector.

Step 10



- Feed the ribbon cables through the opening on the board.
- Pull up and remove the circuit board, and set it aside.

To reassemble your device, follow these instructions in reverse order.