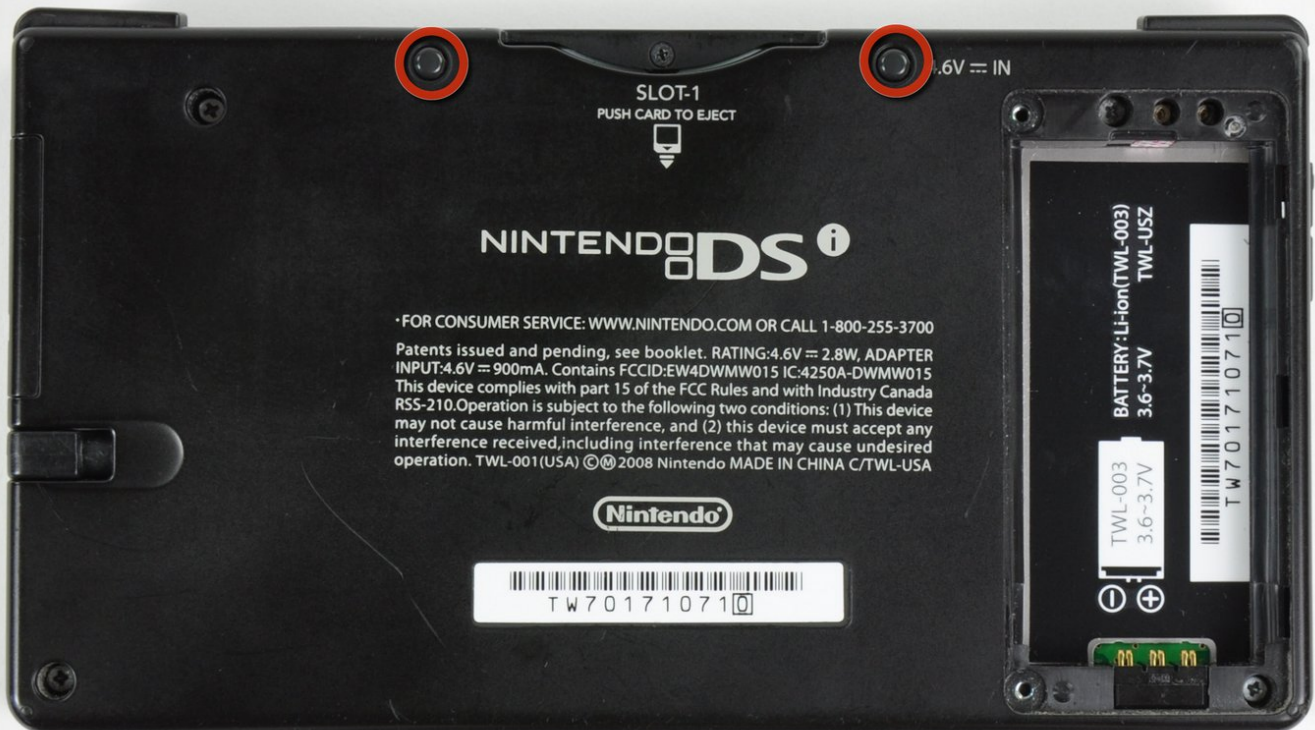




Nintendo DSi Lower Case Assembly Replacement

Replace a cosmetically damaged Nintendo DSi lower case.

Written By: Walter Galan



INTRODUCTION

Use this guide to replace the lower case assembly, including the trigger buttons, SD slot, and stylus holder.



TOOLS:

- [Phillips #00 Screwdriver](#) (1)
- [iFixit Opening Tools](#) (1)
- [Spudger](#) (1)



PARTS:

- [Nintendo DSi Outer Shell](#) (1)

Step 1 — Battery



- Unscrew the two Phillips screws securing the battery cover to the lower case.
- ⓘ The screws remain captive to the battery cover.
- Grasp the battery cover and lift out of the lower case.

Step 2



- Wedge the edge of a spudger in between the top of the battery and its lower case housing and pry upwards to dislodge the battery.
- Grasp the battery and remove it from the DSi.

Step 3 — Lower Case Assembly



- Two screws are hidden underneath two rubber feet highlighted in red.
- Use the tip of a spudger to pry the rubber feet out of the lower case.

Step 4



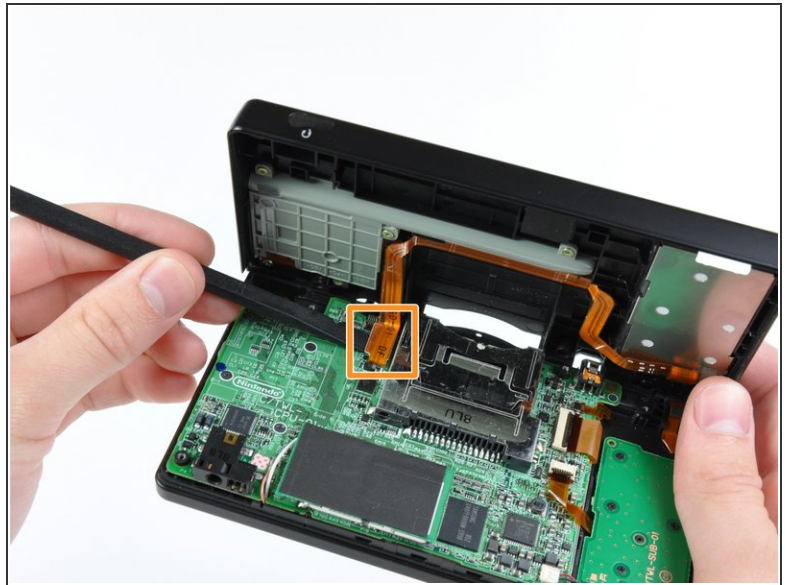
- Remove the following screws securing the lower case to the body of the DSi:
 - Six 5.2 mm Phillips #00 screws.
 - One 2.7 mm Phillips #00 screw.

Step 5



- Insert the spudger in between the lower casing and lower panel near the top right corner of the DSi.
- Carefully run the spudger along the edge of the outer casing, creating an opening between the body and the casing.
- Continue running the spudger around the body of the DSi until the majority of the lower case has been separated.

Step 6



- Carefully lift the lower casing from its bottom edge.
- ⚠ The lower case is still attached to the motherboard by the volume and SD board cable highlighted in red. Do not try to completely remove the lower case of the DSi yet.
- Pry the volume and SD board cable up from its socket on the motherboard using a spudger.
- Once the cable is completely removed, then you may take off the entire outer casing.

To reassemble your device, follow these instructions in reverse order.