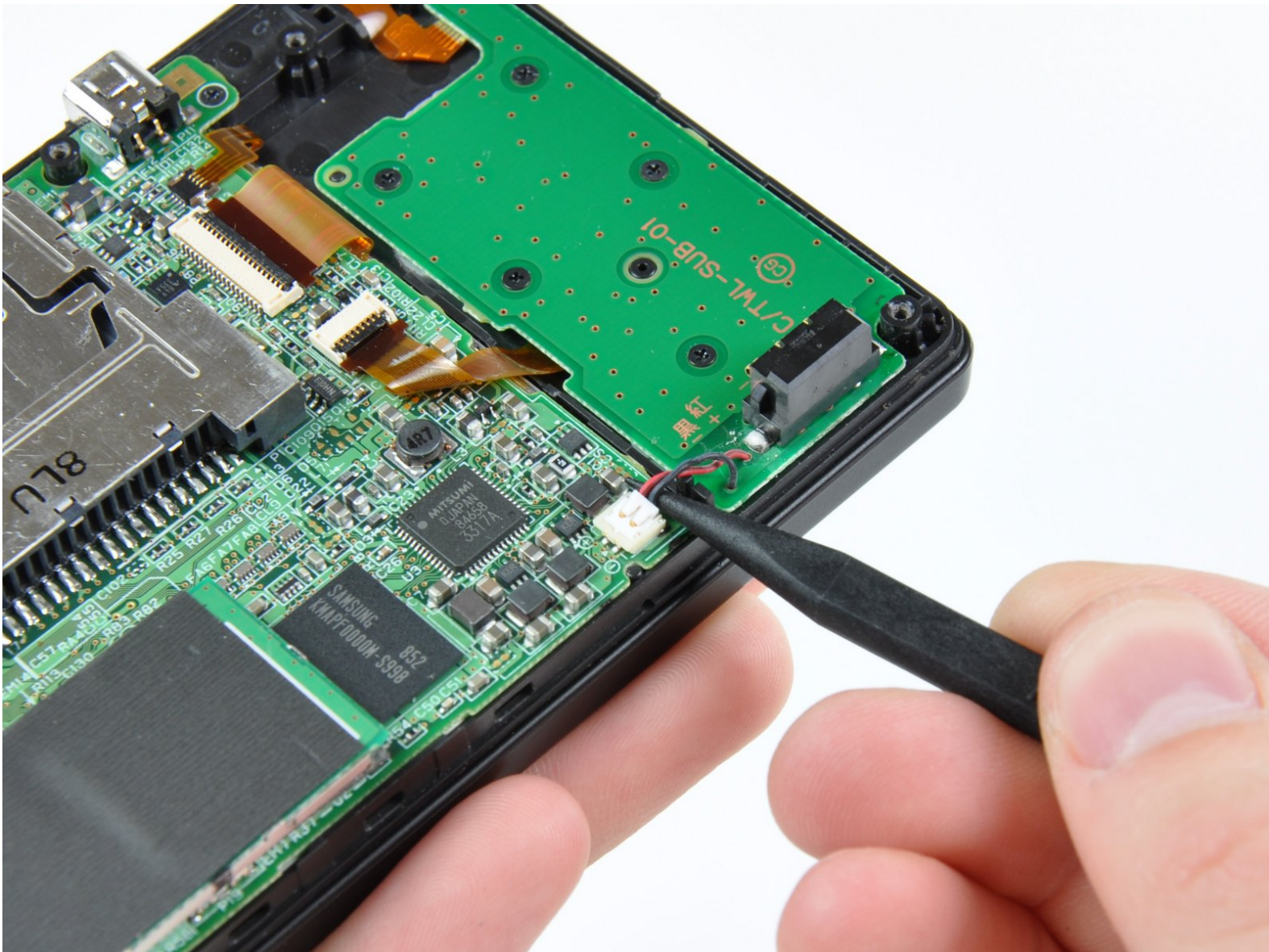




Nintendo DSi Power Board Replacement

Replace the power board on your Nintendo DSi.

Written By: Walter Galan



INTRODUCTION

Use this guide to replace your DSi's power board. Replacing the power board will give you a new battery connector and new electronic switches for the D-pad as well as the power button.

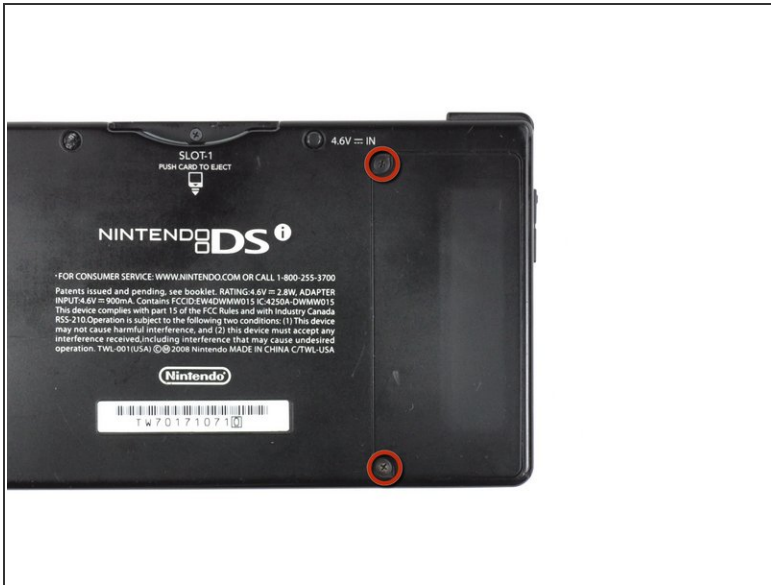
TOOLS:

- [Phillips #00 Screwdriver](#) (1)
- [iFixit Opening Tools](#) (1)
- [Spudger](#) (1)
- [Tweezers](#) (1)

PARTS:

- [Nintendo DSi Power Board](#) (1)
- [Nintendo DSi Power Board Data Cable](#) (1)

Step 1 — Battery



- Unscrew the two Phillips screws securing the battery cover to the lower case.
- ⓘ The screws remain captive to the battery cover.
- Grasp the battery cover and lift out of the lower case.

Step 2



- Wedge the edge of a spudger in between the top of the battery and its lower case housing and pry upwards to dislodge the battery.
- Grasp the battery and remove it from the DSi.

Step 3 — Lower Case Assembly



- Two screws are hidden underneath two rubber feet highlighted in red.
- Use the tip of a spudger to pry the rubber feet out of the lower case.

Step 4



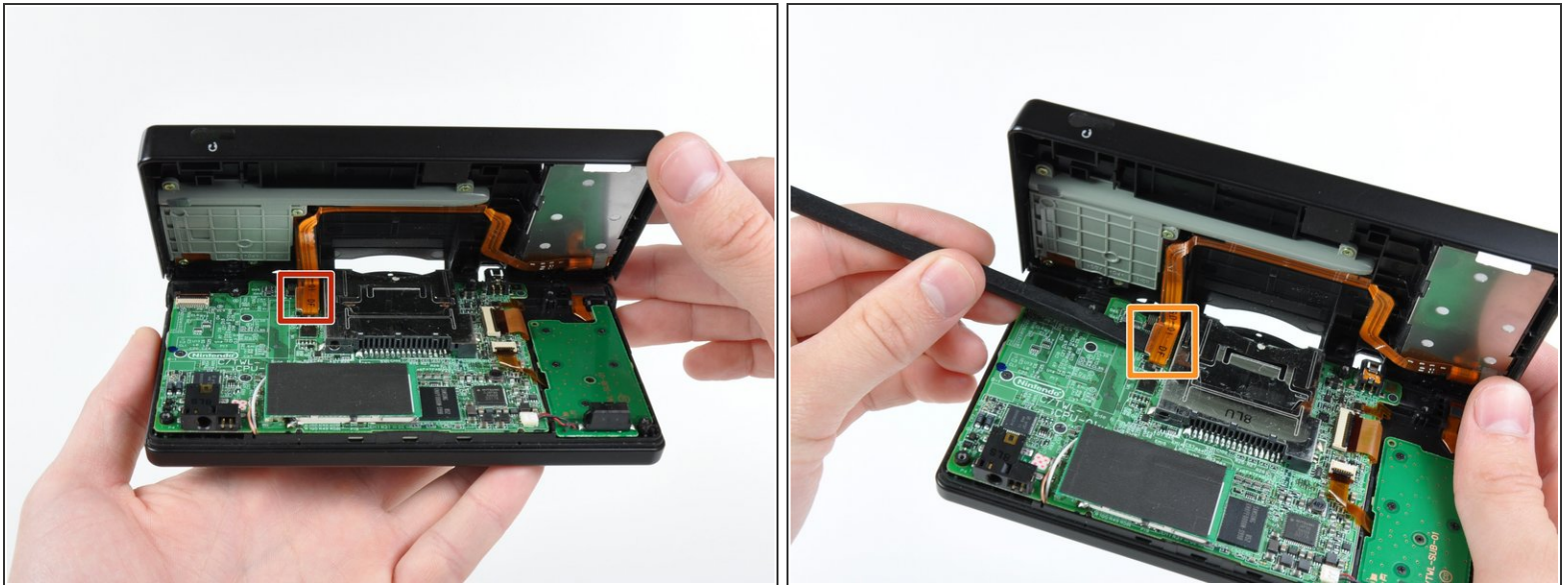
- Remove the following screws securing the lower case to the body of the DSi:
 - Six 5.2 mm Phillips #00 screws.
 - One 2.7 mm Phillips #00 screw.

Step 5



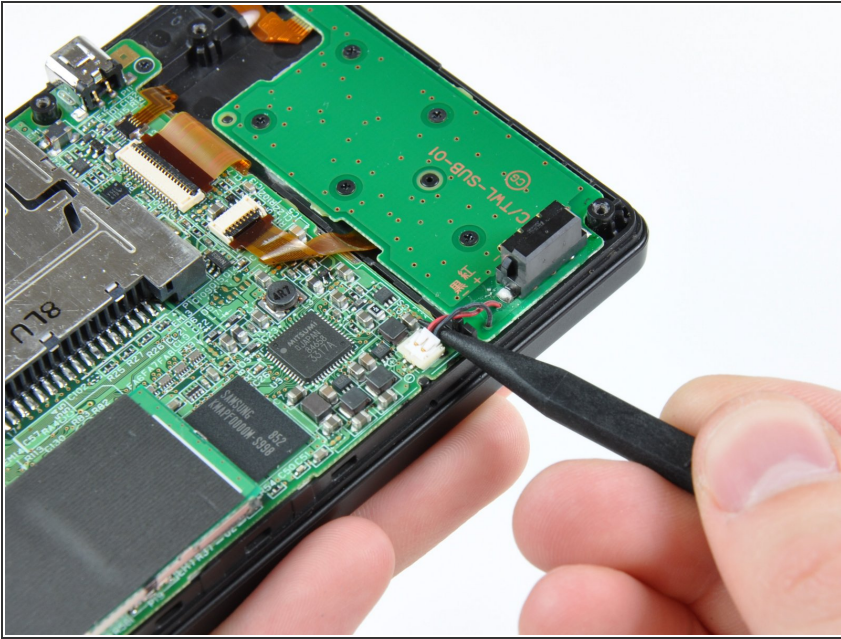
- Insert the spudger in between the lower casing and lower panel near the top right corner of the DSi.
- Carefully run the spudger along the edge of the outer casing, creating an opening between the body and the casing.
- Continue running the spudger around the body of the DSi until the majority of the lower case has been separated.

Step 6



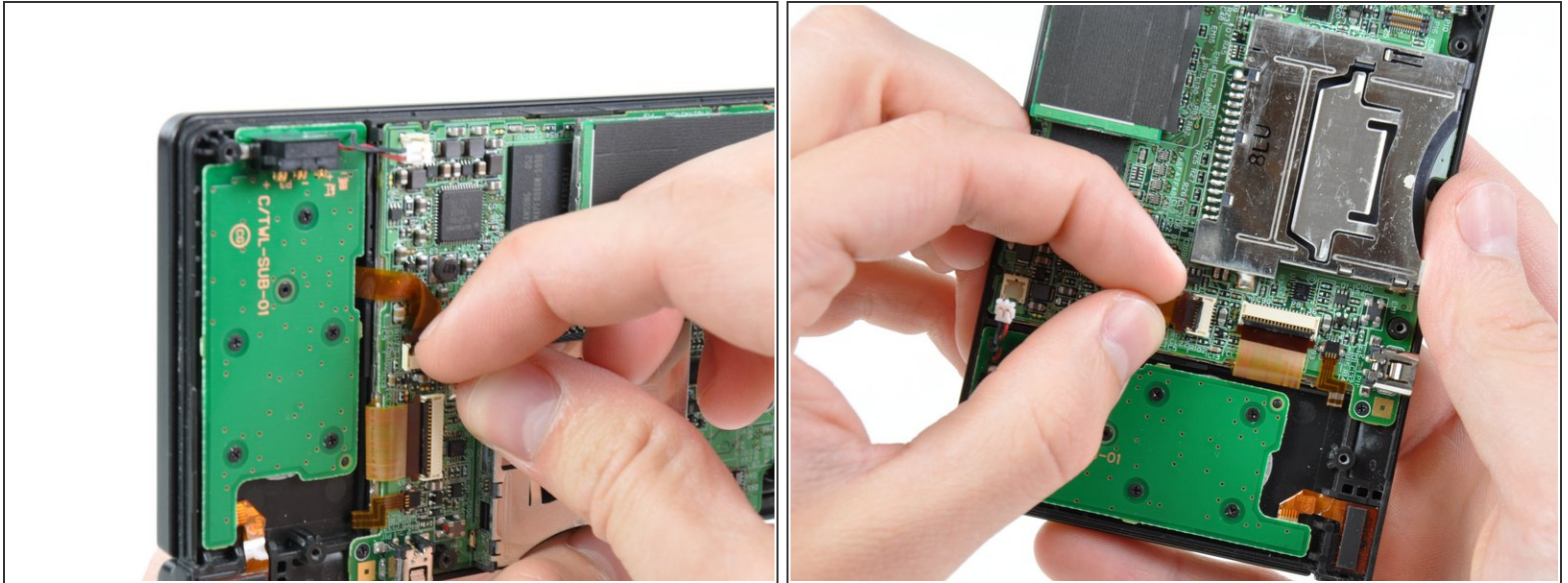
- Carefully lift the lower casing from its bottom edge.
- ⚠ The lower case is still attached to the motherboard by the volume and SD board cable highlighted in red. Do not try to completely remove the lower case of the DSi yet.
- Pry the volume and SD board cable up from its socket on the motherboard using a spudger.
- Once the cable is completely removed, then you may take off the entire outer casing.

Step 7 — Power Board



- Use the tip of a spudger to pry the power board connector out of its socket on the motherboard.

Step 8

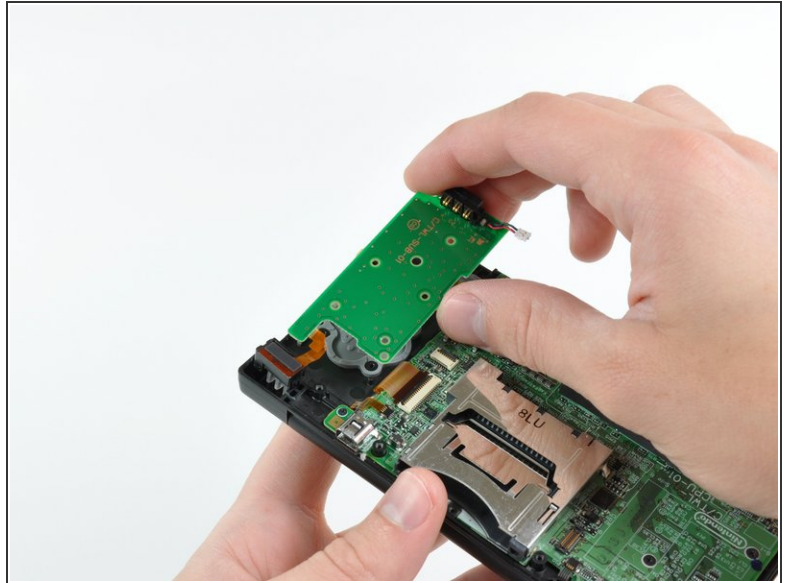
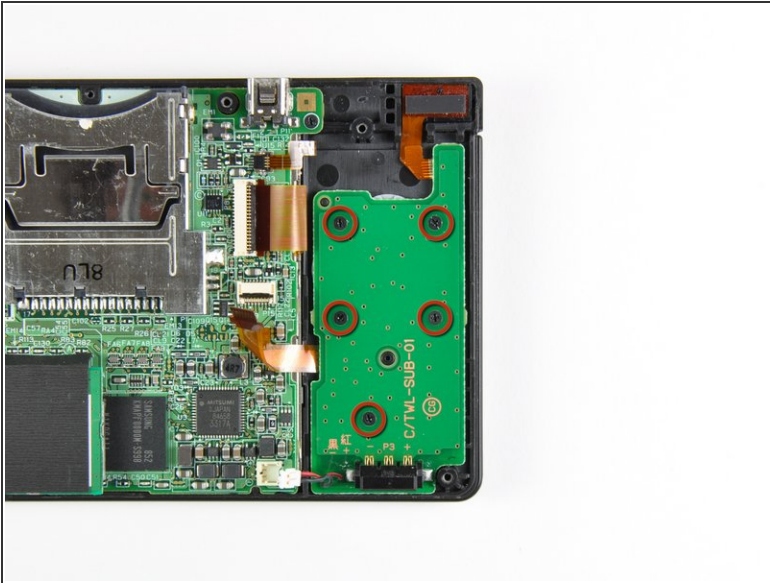


- Use your fingernail or the edge of a plastic opening tool to flip up the retaining flap on power board ZIF connector.

⚠ Be sure you are prying up on the hinged retaining flap, **not** the socket itself.

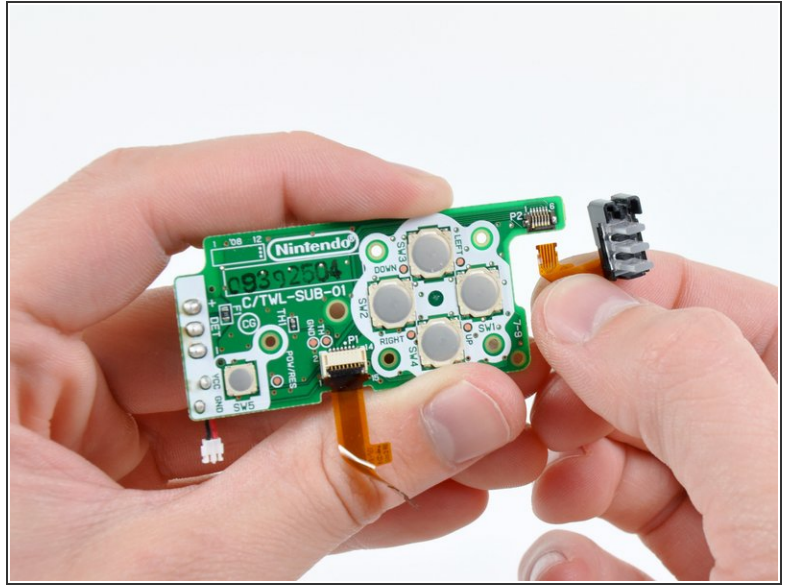
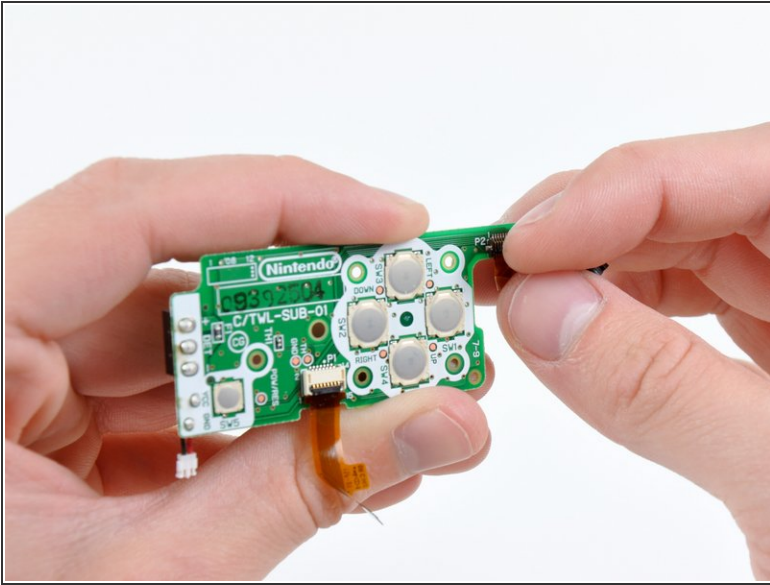
- After flipping up the locking tab on the socket, use your fingers or a pair of tweezers to gently pull the cable straight out of its socket.

Step 9



- Remove the five 2.6 mm Phillips screws securing the power board to the DSi's framework.
- Lift and remove the power board out of the DSi.

Step 10



- Use your fingernail or the edge of a plastic opening tool to flip up the retaining flap on LED indicator ZIF connector.
- ⚠ Be sure you are prying up on the hinged retaining flap, **not** the socket itself.
- After flipping up the locking tab on the socket, use your fingers or a pair of tweezers to gently pull the cable straight out of its socket.
- ℹ If necessary, transfer the power board ribbon cable to your new power board.

To reassemble your device, follow these instructions in reverse order.