



Nintendo DSi Top LCD Screen Replacement

Written By: rjcamero



INTRODUCTION

This guide has been updated by iFixit staff! Read the new, official guide [here](#).

A guide on how to replace the Nintendo DSi top LCD screen.



TOOLS:

- [Metal Spudger](#) (1)
- [Phillips #00 Screwdriver](#) (1)
- [iFixit Opening Tools](#) (1)
- [Spudger](#) (1)
- [Tweezers](#) (1)



PARTS:

- [Nintendo DSi Upper LCD](#) (1)

Step 1 — Battery



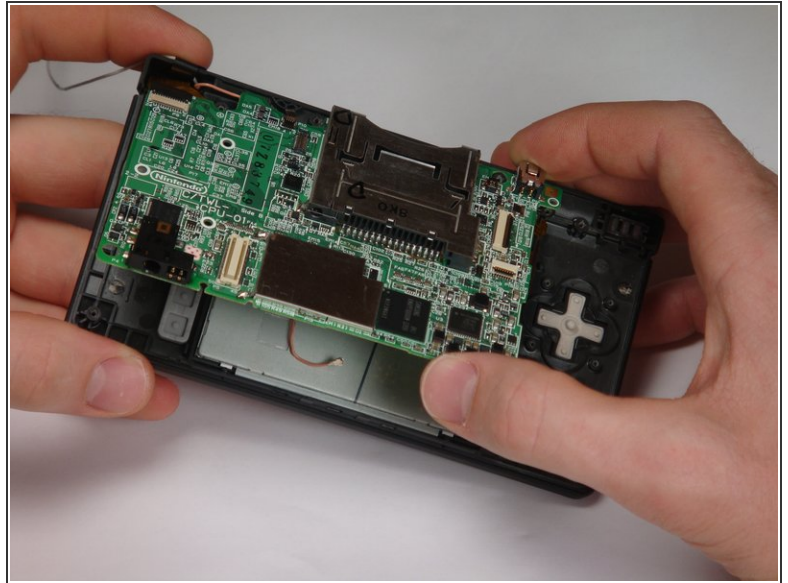
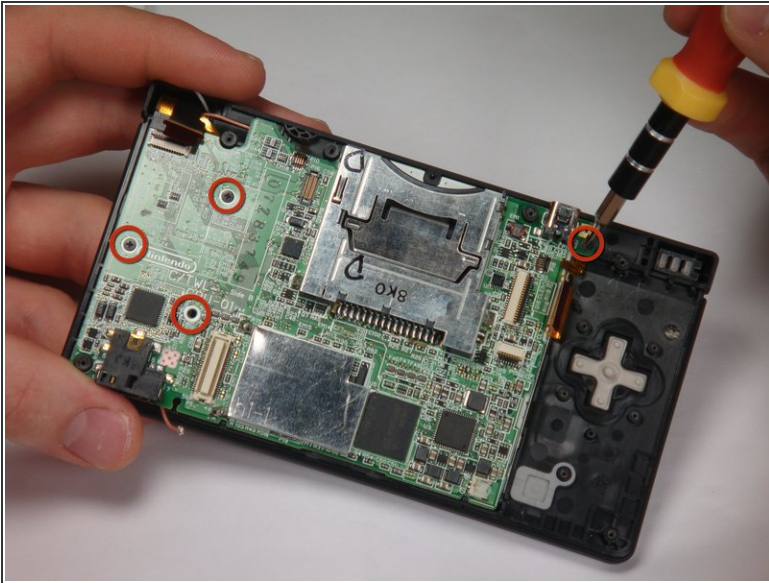
- Loosen the two screws on the battery panel. Then lift the panel up to remove it.

Step 2



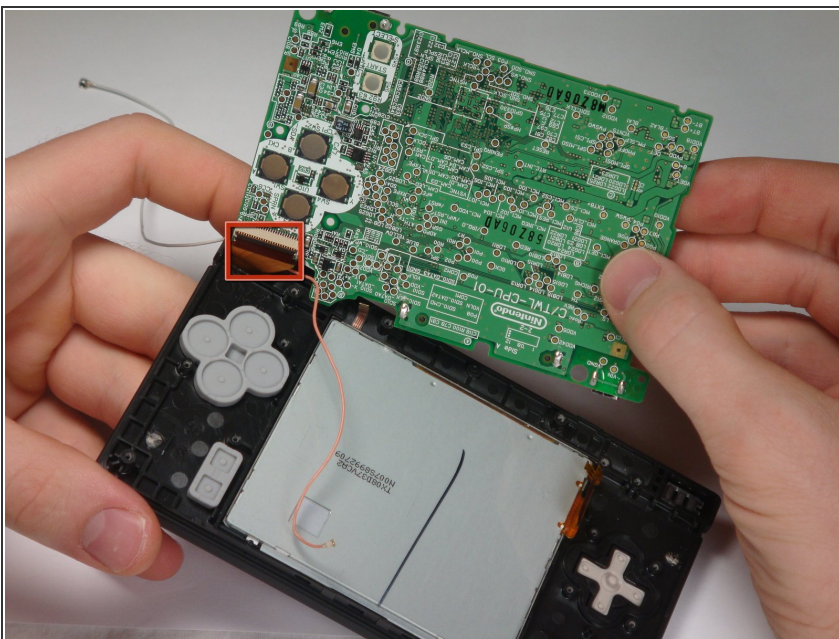
- L Button.
- Top of the battery pack.
- To remove the battery pack, place your fingernail or a spudger at the top of the battery near the L button. Gently lift the battery out.

Step 3 — Motherboard



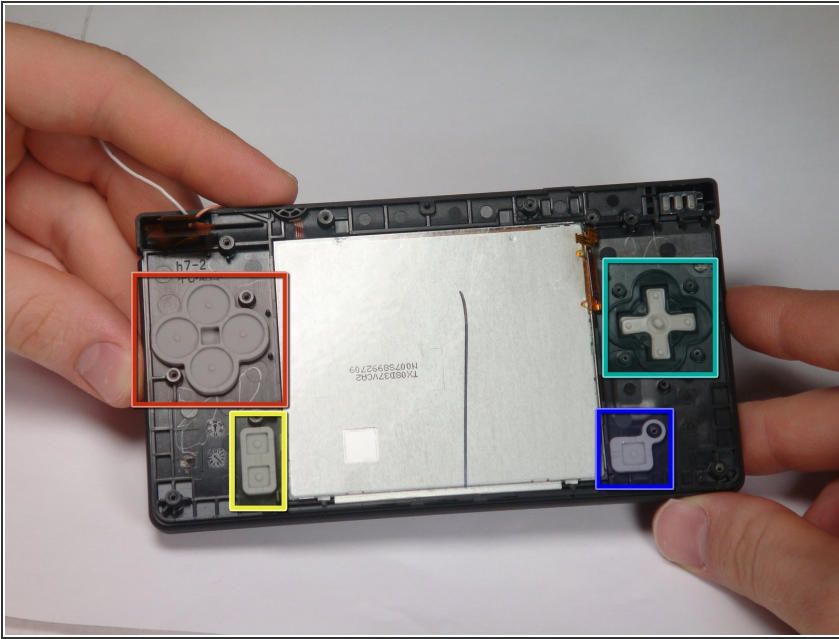
- Remove 4 Phillips screws from the board.
 - Lift the main board from the bottom end and flip it over to reveal the last connector.
- ⚠ Keep the main board fairly close to the case, making sure not to damage the last ribbon cable holding it in place.

Step 4



- Disconnect the ribbon cable by gently using a plastic opening tool to flip up the black connector latch. The cable should easily slide out from the connector.
- The motherboard should now be free from the rest of the device.

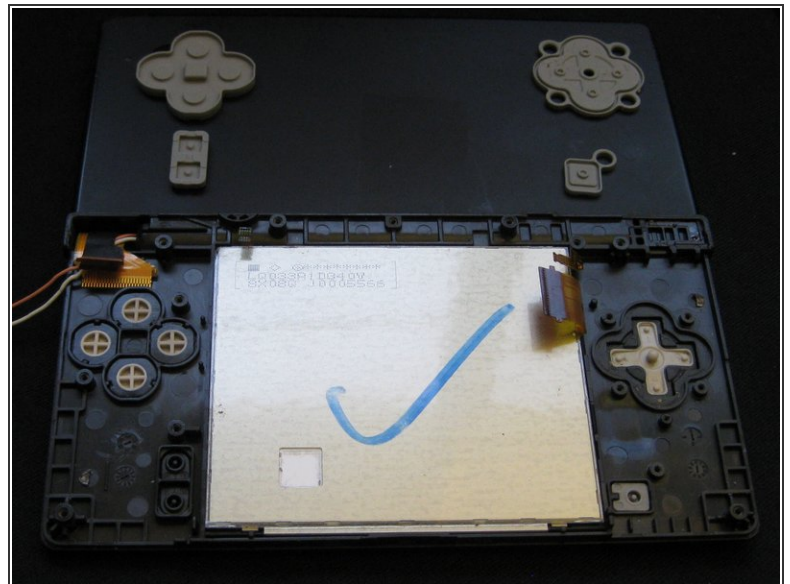
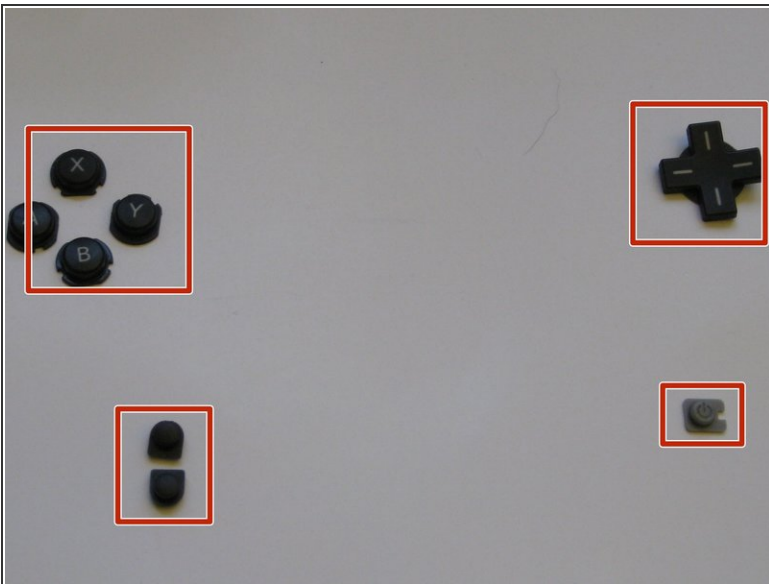
Step 5 — Disassembling Nintendo DSi Bottom case



- ✦ Remove the rubber front-panel button membranes from the device. Pay careful attention to where the buttons go, so you can replace them correctly.

- A/B/X/Y button assembly
- Select/Start button assembly
- D-pad
- Power button

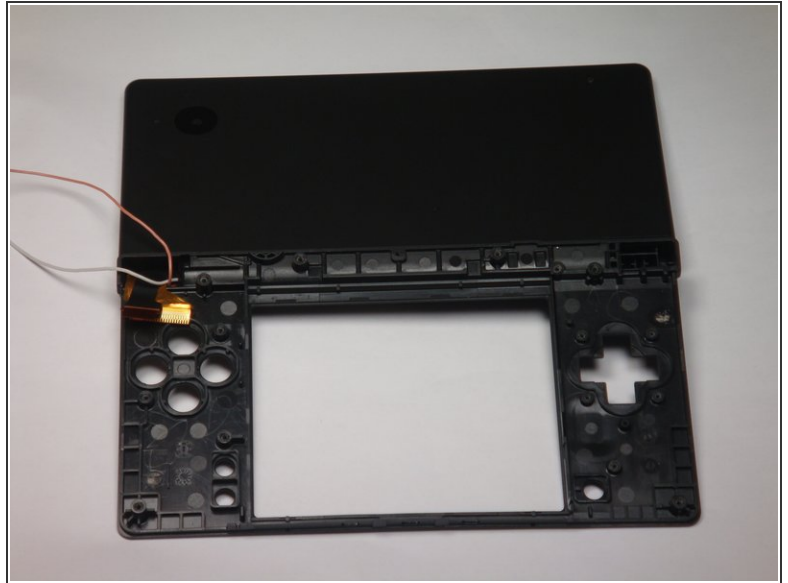
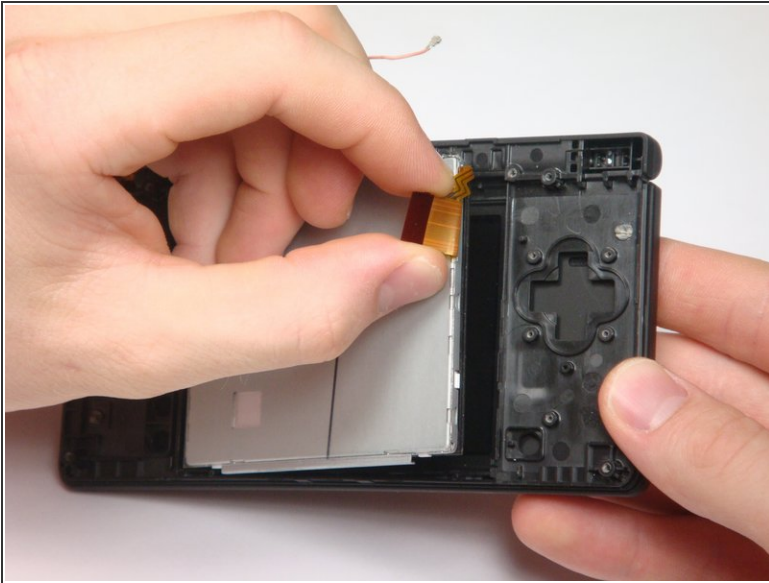
Step 6



- Remove the plastic buttons and keep them in a safe place.

- ✦ All of the buttons have "key" notches to prevent them from being inserted incorrectly (backwards or in the wrong place), but it can take a while to figure out where everything goes if they get shuffled around.

Step 7



- Flip the case open, and push the lower screen assembly out of the frame.

Step 8 — Top LCD Screen



- **i** To make the repair easier, we recommend removing the bottom LCD screen prior to replacing the top LCD screen.
- Using a spudger, or similar tool, pry out the 4 square screw covers.

Step 9



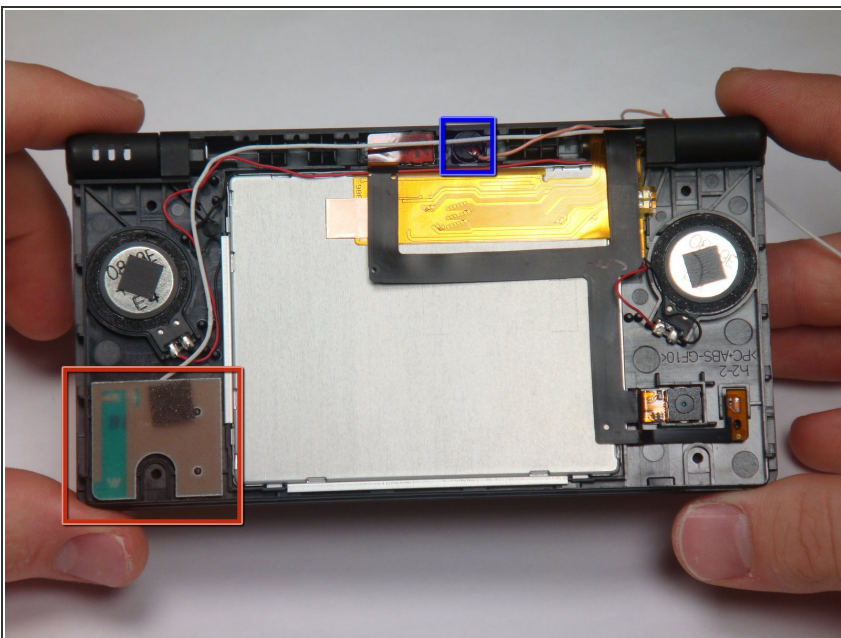
- Remove 4 Phillips screws with a #00 Phillips screwdriver.

Step 10



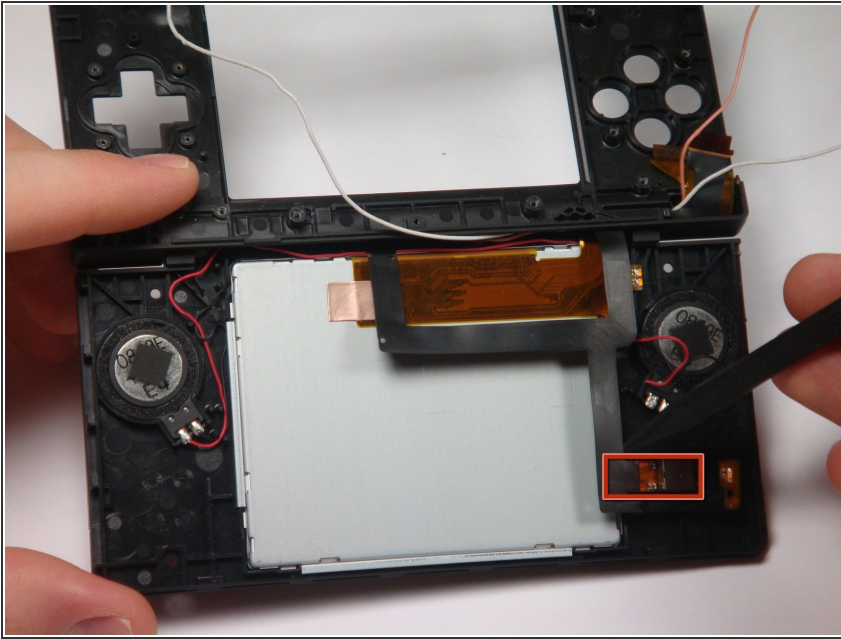
- Place a plastic opening tool between the front panel and top edge of the outer case. Slide the tool along the edge as needed to prop open the case.
- With the screen facing you, slide the screen side down with your thumbs to separate the screen from the cover.

Step 11



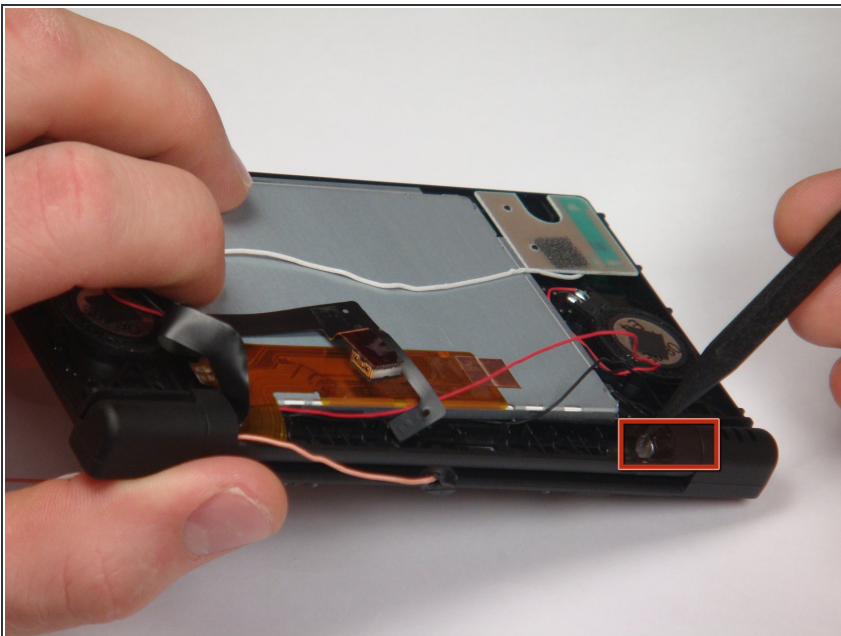
- Remove the antenna from the bottom left of the device.
- Remove the microphone from the top of the frame.

Step 12



- Use a spudger to pry the camera out of its place.

Step 13



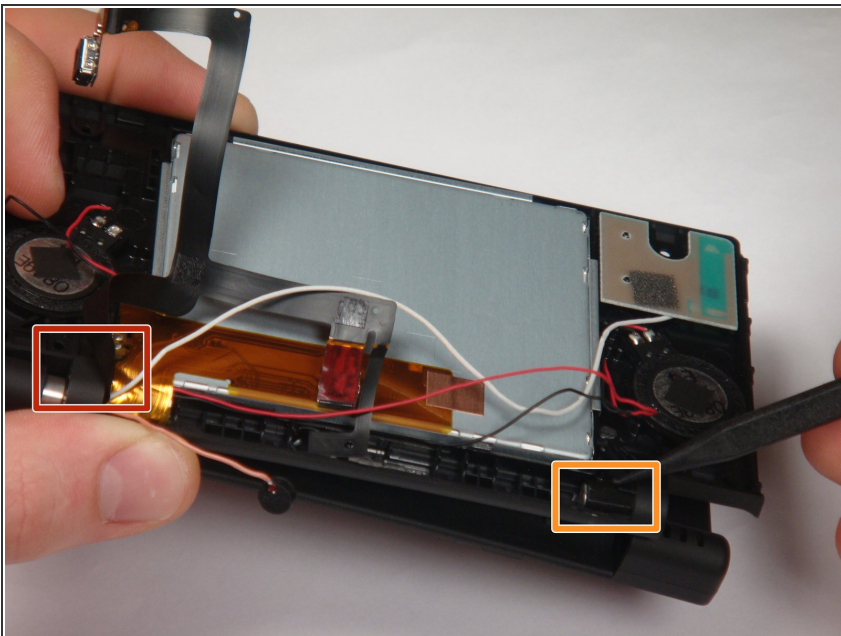
- ❗ Cables for the components in the upper half of the device run through the hinge, which must be carefully disassembled before continuing.
- Start by pushing the sliding shaft in the hinge on the opposite side of the wires/ribbons.

Step 14



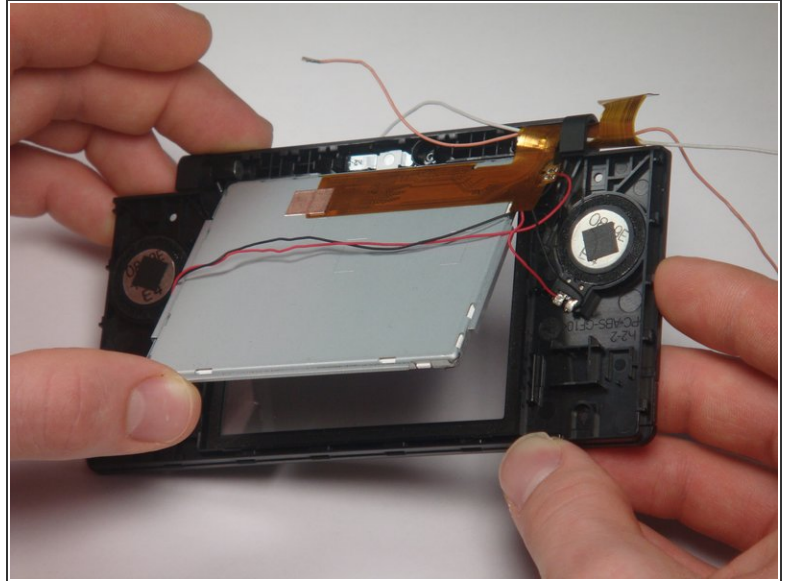
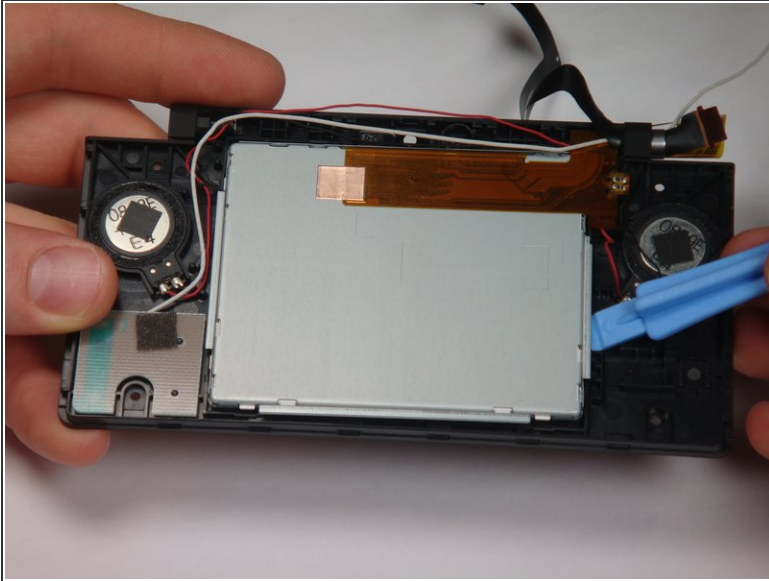
- On the reverse side of the casing, insert the spudger onto the surface of the sliding shaft just left of the LED light channels.
- Push the sliding shaft completely through the hinge until it stops and the hinge is released.

Step 15



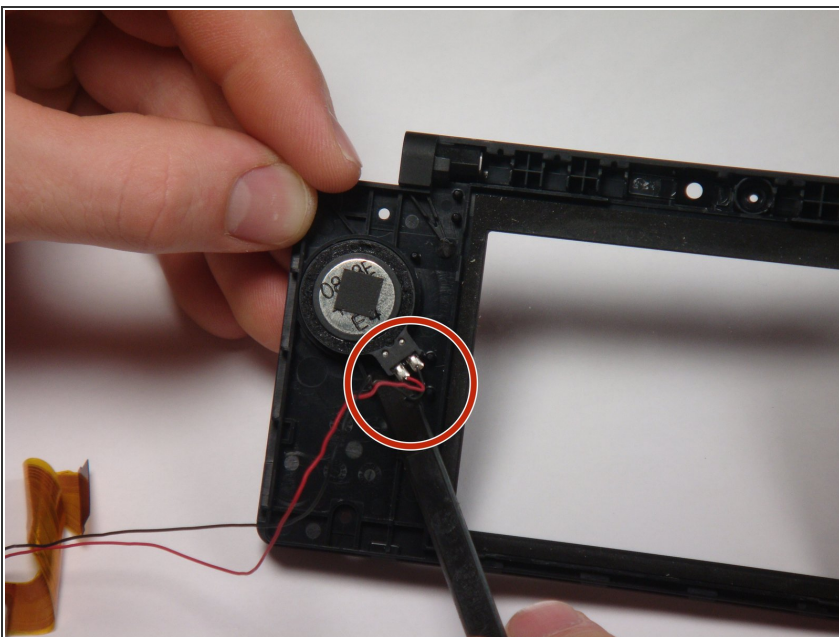
- The right side of bottom case should separate from the top case when you remove the sliding shaft.
- ⚠ Do not pull up too far or the wire hinge may be damaged.
- Slide the top case to the right to separate the joint.
- Weave the wires and ribbons through the wire hinge to completely separate the top and bottom casings.

Step 16



- i** The speakers are soldered to the ribbon cable attached to the upper LCD, so they must be removed at the same time as the LCD.
- Lift the top LCD out of the plastic frame. Carefully thread the ribbon cable out of the hinge to avoid damaging it.

Step 17



- To remove the speakers, place a flat object underneath and gently pry them off.

To reassemble your device, follow these instructions in reverse order.