



# Nintendo DSi XL Rear Bezel Replacement

Prerequisite guide for display assembly guides.

Written By: Brett Hartt



---

# INTRODUCTION

Prerequisite guide for display assembly guides.

---



## TOOLS:

- [Phillips #00 Screwdriver](#) (1)
  - [Spudger](#) (1)
-

## Step 1 — Battery



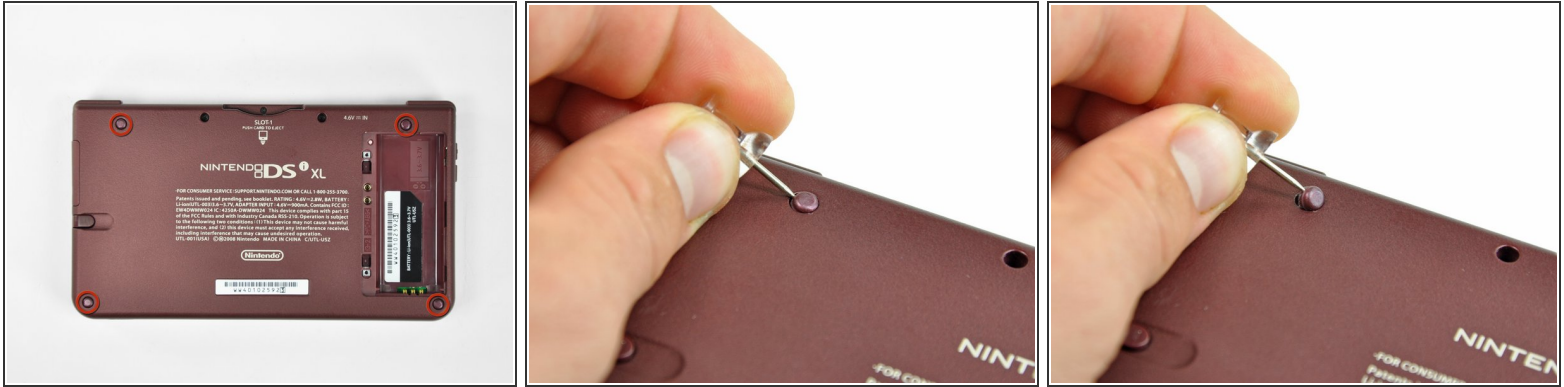
- Remove the two Phillips screws securing the battery cover to the back of the handheld console.
- Lift the battery cover off the back of the DSi XL.

## Step 2



- Lift the battery from the DSi XL.

## Step 3 — Lower Case



- Remove the four rubber screw covers on the lower case by prying them up with a push pin.

## Step 4




- Remove the following seven Phillips screws that secure the lower case to the rest of the DSi XL:
  - Four silver 5.3 mm screws
  - Two black 5.3 mm screws
  - One black 2.5 mm screw



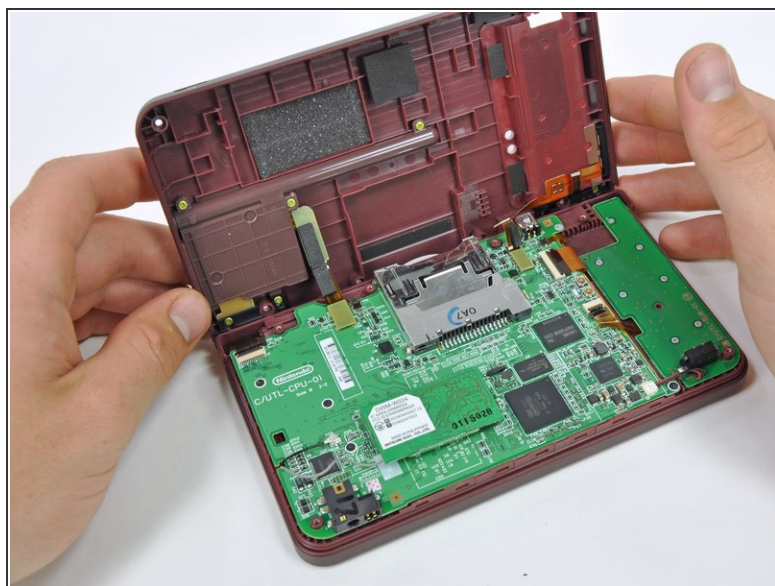
## Step 5



 Turn the DSi XL over, and open the display.

- Insert a spudger between the upper and lower case at the bottom left corner of the DSi.
- Slide the spudger along the bottom edge of the upper case to release the latches securing the upper case to the lower case.

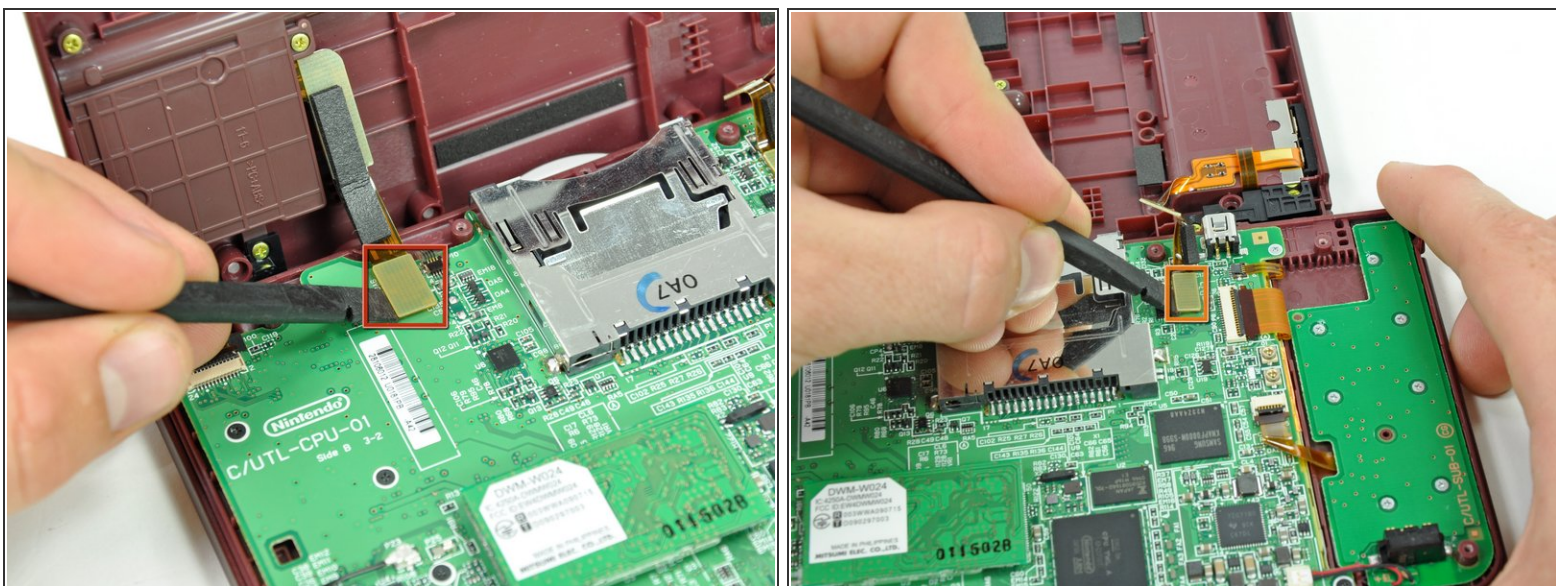
## Step 6



- i** Close the display and turn the DSi XL over.

  - Lift the lower case from the front edge.
  - Rotate the lower case away from the DSi.
- i** The lower case cannot be completely removed yet, since it is still connected to the motherboard.

## Step 7



- Using a spudger, pry the SD card/right shoulder button connector off its socket.
- Pry the volume button/left shoulder button connector off its socket on the motherboard with a spudger.



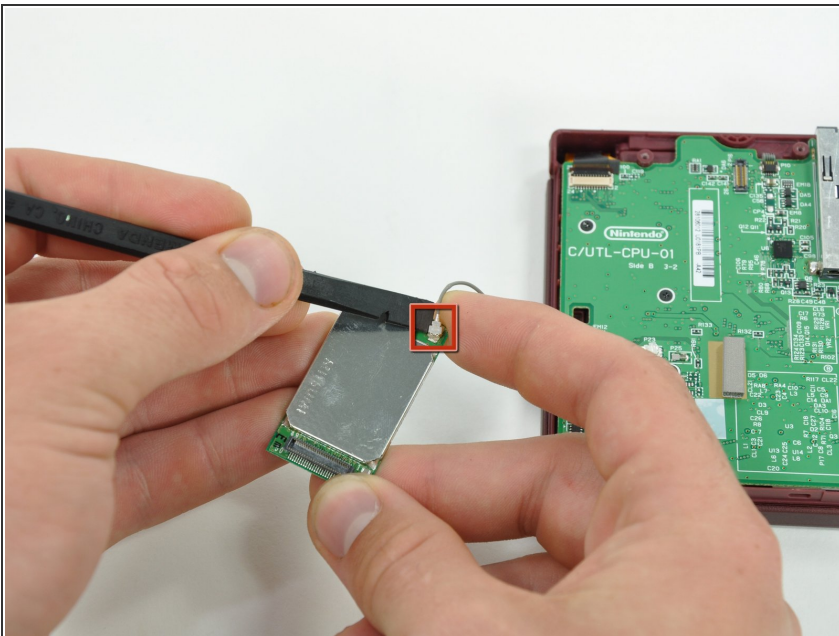
## Step 8 — Wi-Fi Board



- Lift the Wi-Fi board up off its socket on the motherboard.

⚠ Do not attempt to completely remove the Wi-Fi board yet. It is attached to the motherboard by an antenna cable.

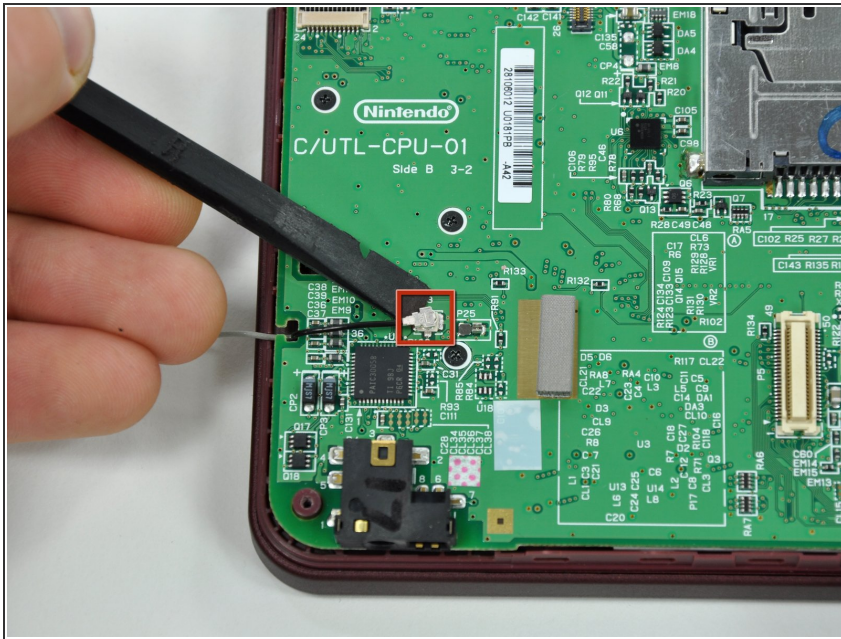
## Step 9



- Use a spudger to pry the Wi-Fi cable off its socket on the underside of the Wi-Fi board.

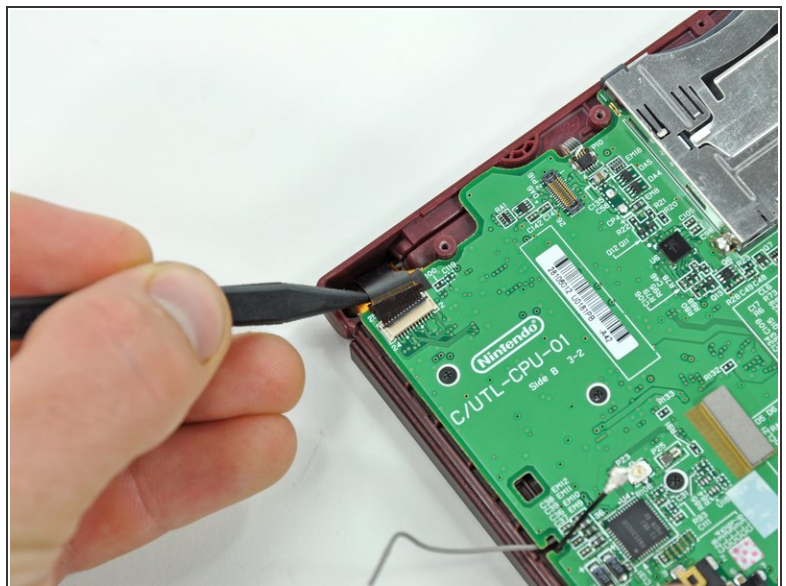
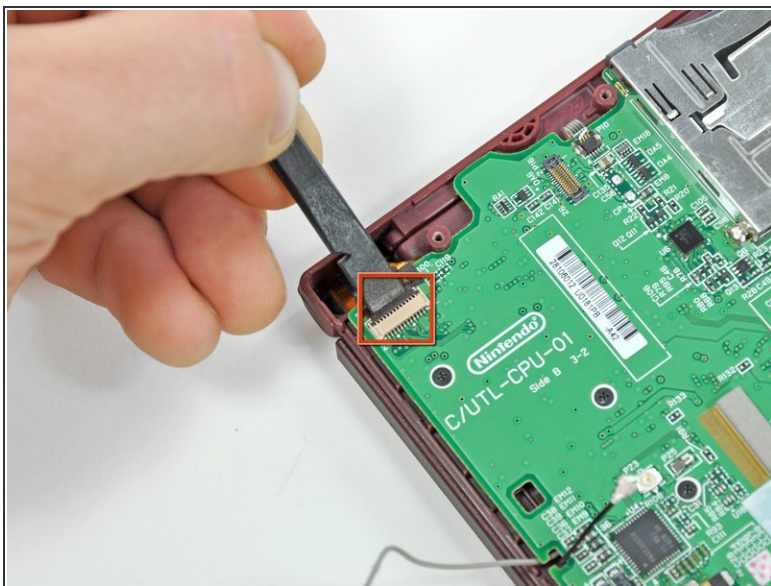


## Step 10 — Motherboard



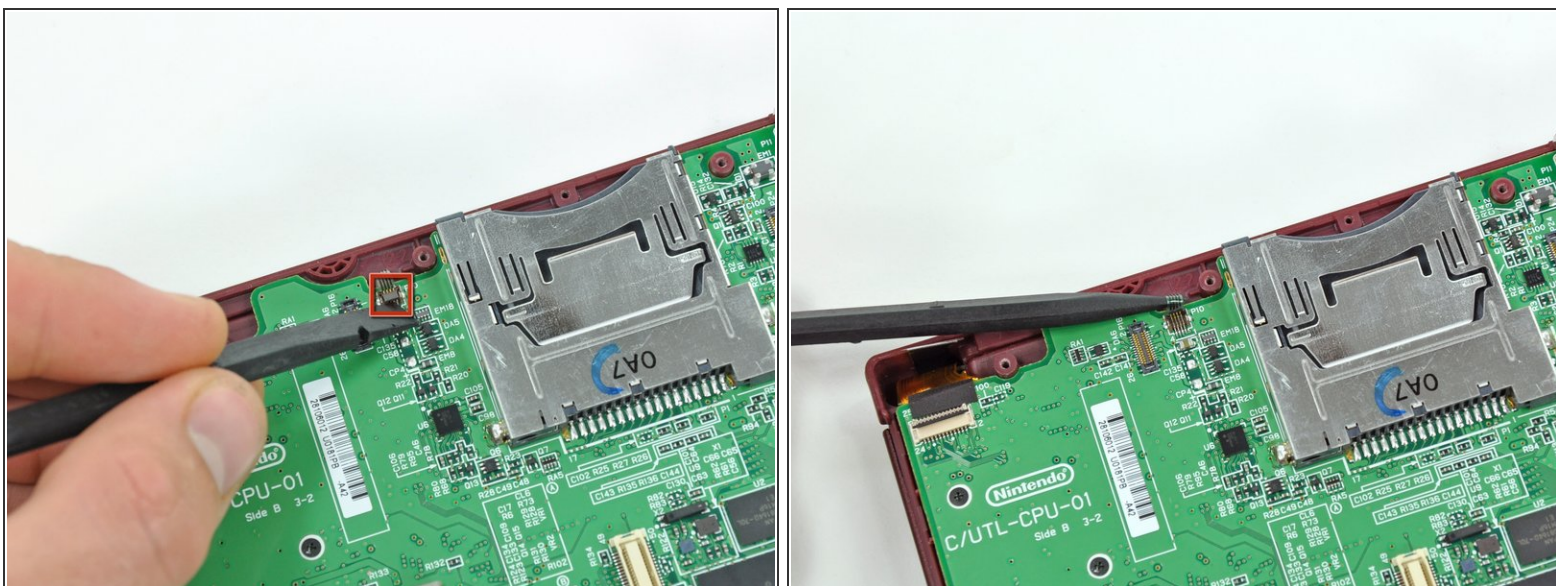
- Use a spudger to pry the microphone cable off the motherboard.
- ❗ Pry from underneath the cable.

## Step 11



- Using the flat end of a spudger, flip up the retaining flap on the camera ribbon ZIF connector.
- Use the pointed end of a spudger to pull the camera ribbon from the ZIF connector.

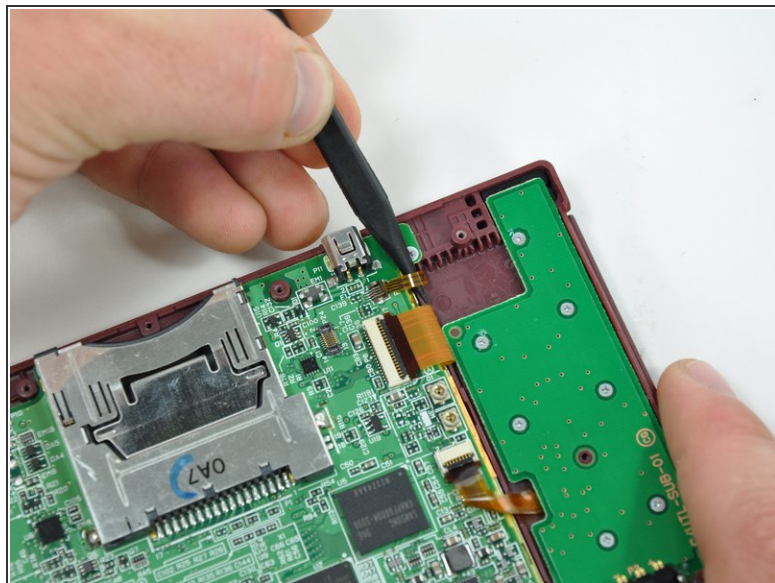
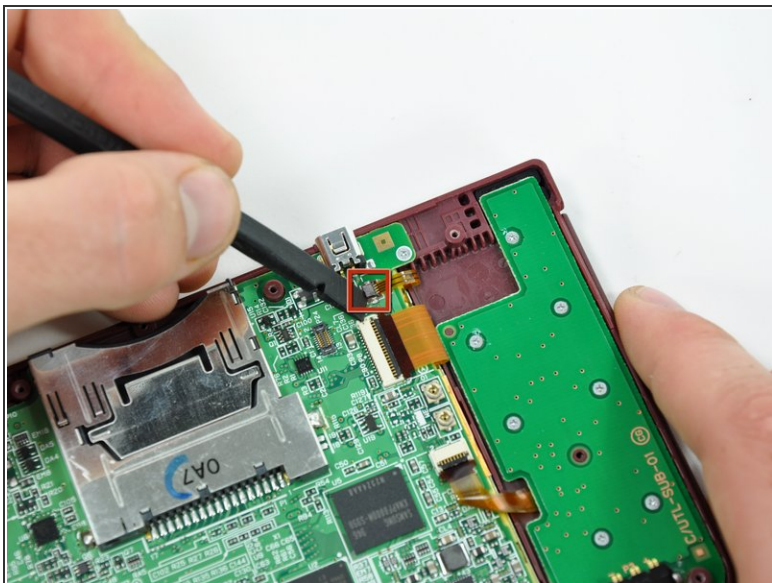
## Step 12



- Using the flat end of a spudger, flip up the retaining flap on the touchscreen cable ZIF connector.
- With the pointed end of the spudger, pull the touchscreen cable from its connector on the motherboard.



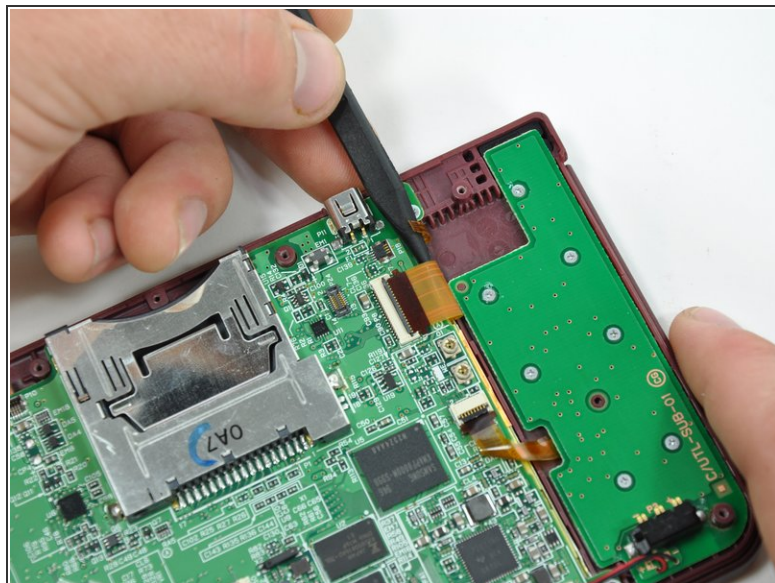
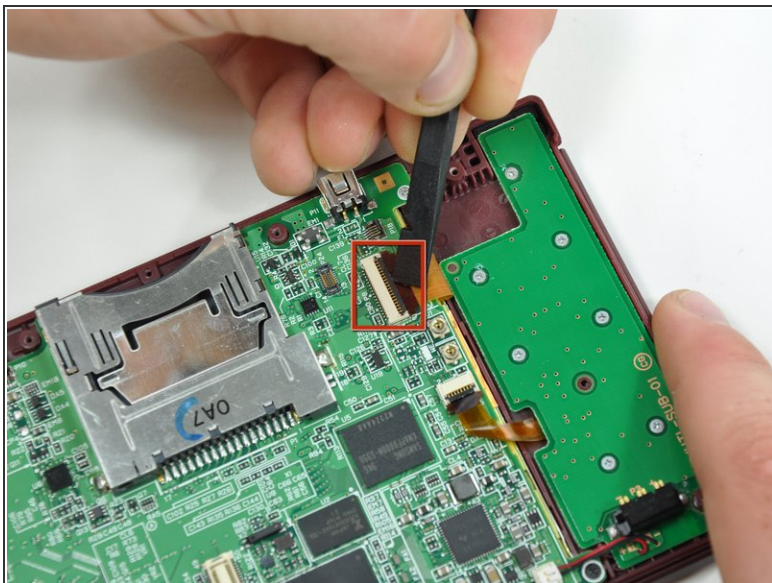
## Step 13



- Using the flat end of a spudger, flip up the retaining flap on the backlight cable ZIF connector.
- With the pointed end of the spudger, pull the backlight cable from its connector on the motherboard.

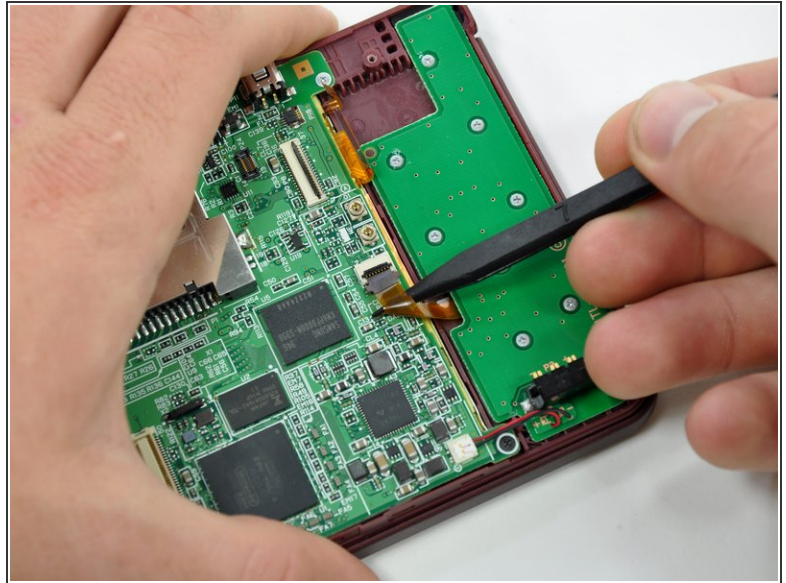
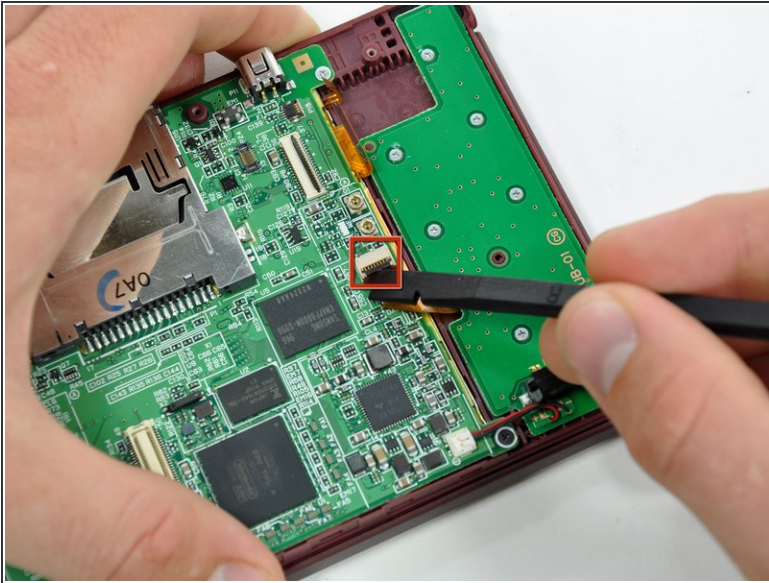


## Step 14



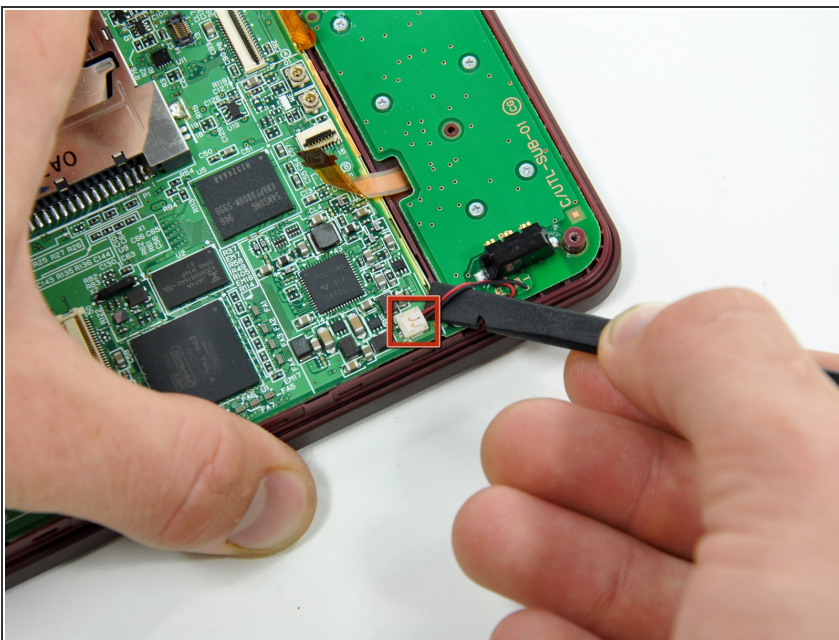
- Using the flat end of a spudger, flip up the retaining flap on the lower display data cable ZIF connector.
- With the pointed end of the spudger, pull the lower display data cable from its connector on the motherboard.

## Step 15



- Using the flat end of a spudger, flip up the retaining flap on the ZIF connector for the D-Pad/power button cable.
- With the pointed end of the spudger, pull the D-Pad/power button cable from its connector on the motherboard.

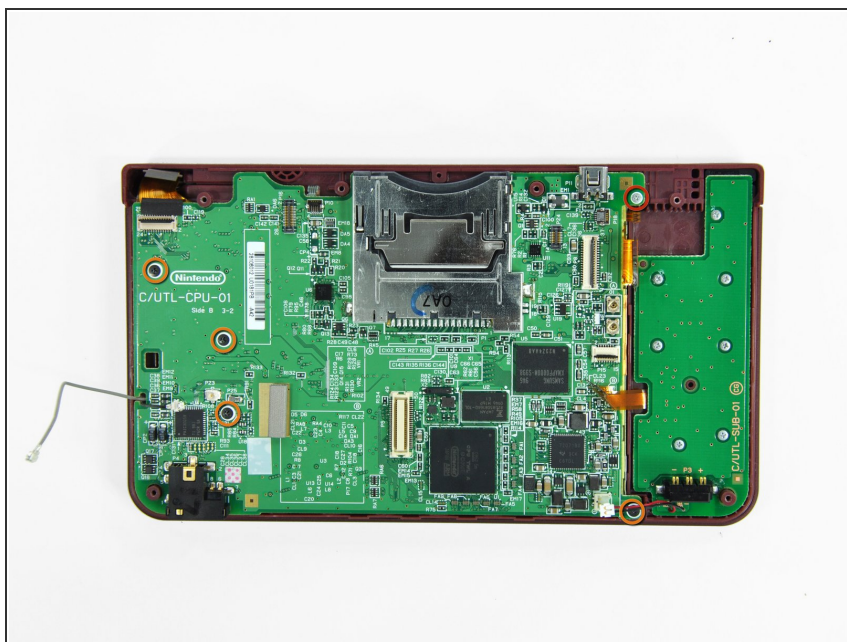
## Step 16



- Using the flat end of the spudger, pry the battery cable up off its socket on the motherboard.

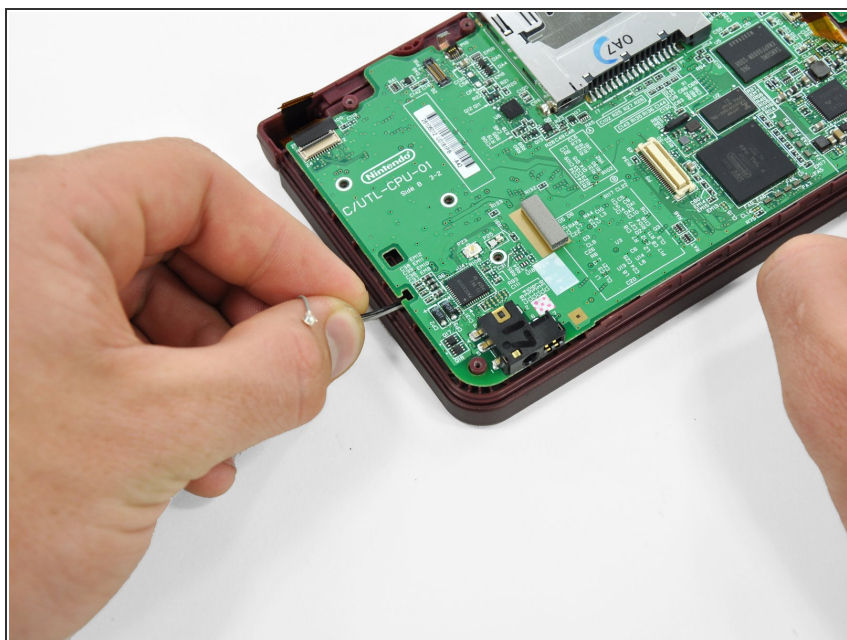


## Step 17



- Remove the screws securing the motherboard to the upper case:
  - A single 2.5 mm silver Phillips screw
  - Four 3.7 mm black Phillips screws

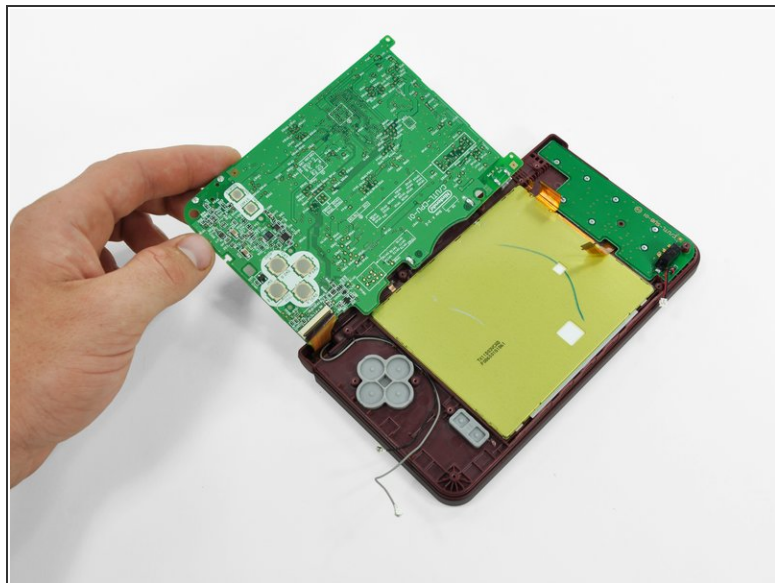
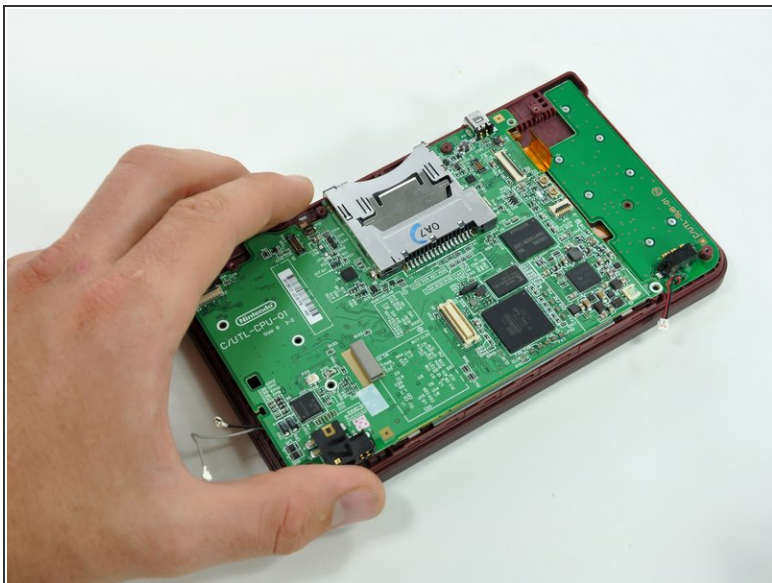
## Step 18



- Deroute the microphone and antenna cables through the slot in the motherboard.

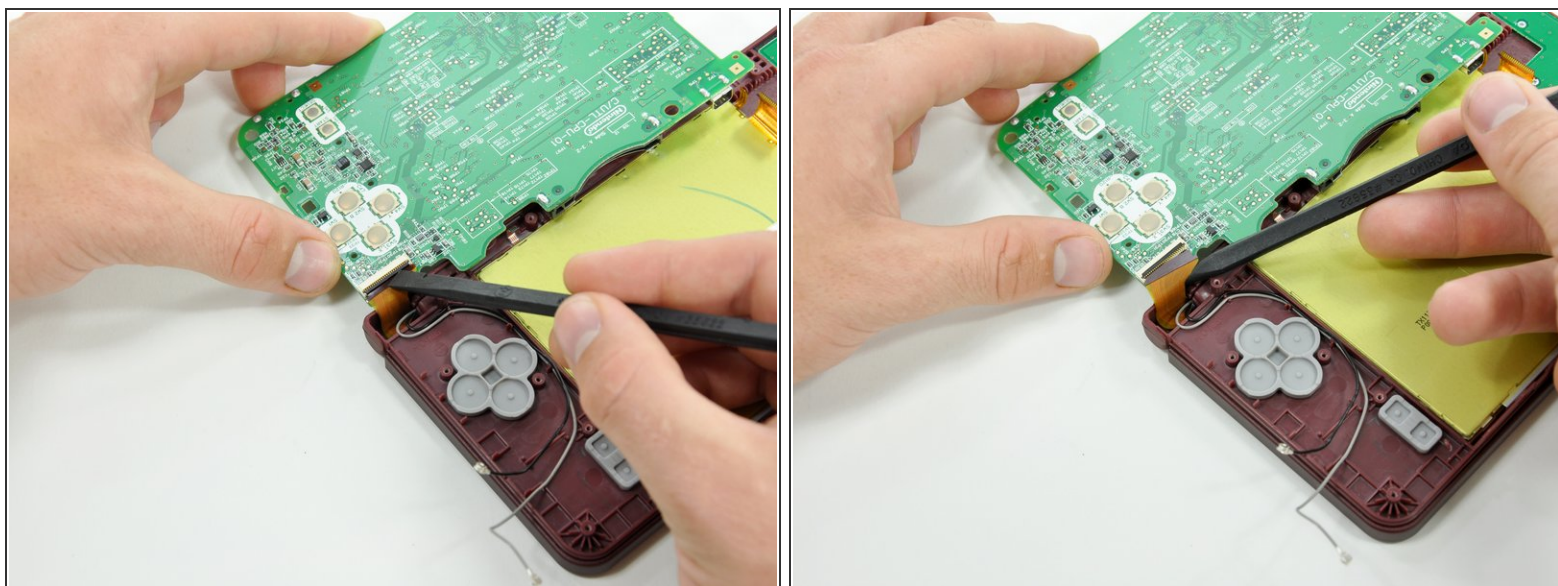


## Step 19



- Rotate the motherboard off the lower case.
- ⓘ The motherboard cannot be completely removed yet. It is still attached by the upper LCD's display data ribbon cable.

## Step 20



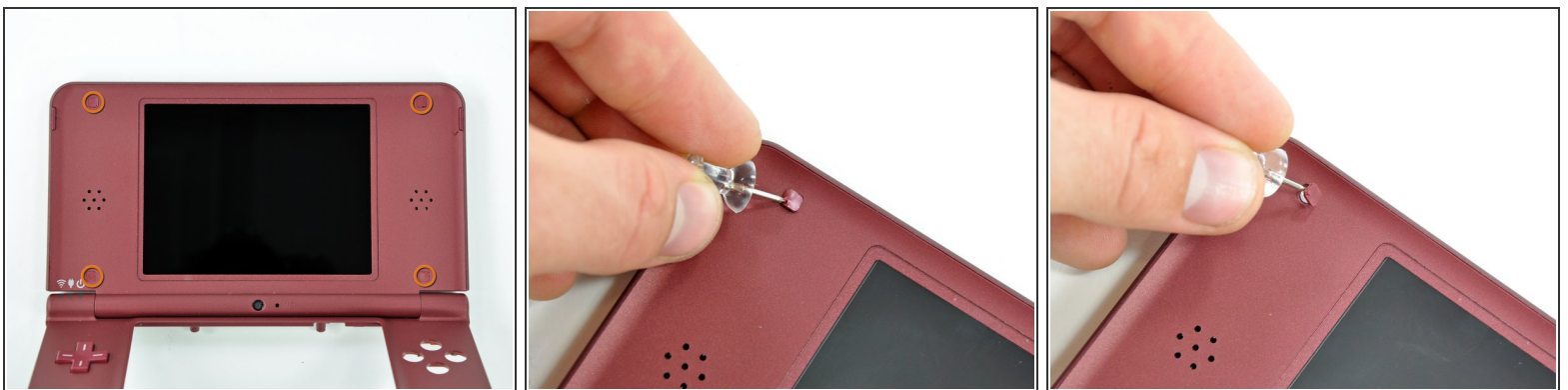
- Using the flat end of a spudger, flip up the retaining flap on the upper display data cable ZIF connector.
  - With the pointed end of the spudger, pull the upper display data cable from its connector on the underside of the motherboard.
- i** The motherboard is now free from the upper case.

## Step 21 — Lower Display Assembly



- With the console still upside-down, open the DSi XL slightly.
- Push the lower display away from the upper case.
- Remove the lower display from the DSi XL.

## Step 22 — Rear Bezel



- Turn the DSi XL over and open the display.
- ☑ When re-assembling the device, be sure to re-install the ABXY and Start/Select buttons, as they are likely to fall out once the handheld console is turned over.
- Use a pushpin to remove the four plastic screw covers on the front bezel.



## Step 23



- Remove the four 3.5 mm silver Phillips screws securing the rear bezel to the front bezel.

## Step 24



- Using two hands, gently slide the rear bezel upwards.

**i** The rear bezel will move only about 2 mm.

## Step 25



- Insert a spudger into the gap between the front and rear bezel.
- Rotate the spudger away from the DSi XL, prying the two bezels apart.

## Step 26




- In the same manner as described above, continue prying along the top edge of the front and rear bezels.

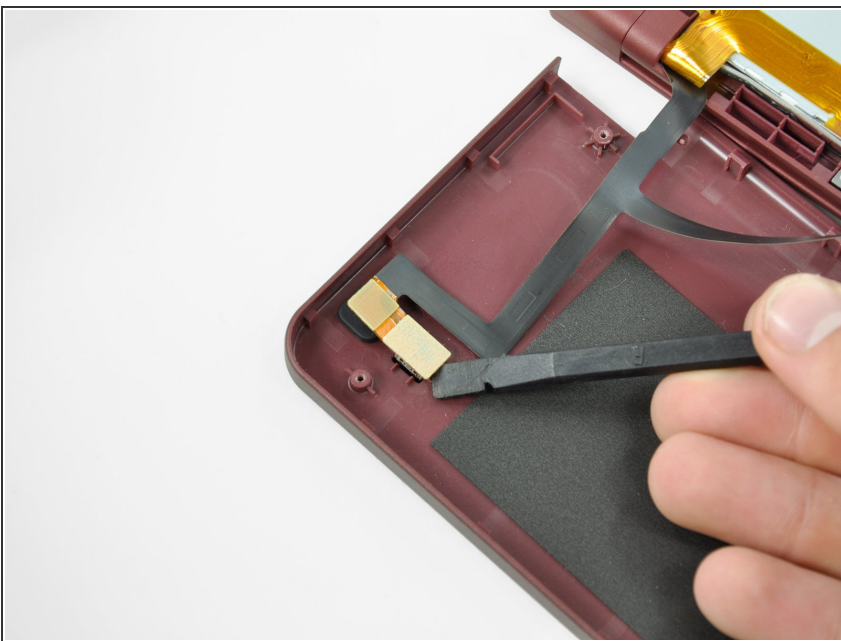
## Step 27



- Separate the rear bezel from the front bezel.

 Do not attempt to completely remove the rear bezel yet. It is still attached to the front bezel by the rear-facing camera.

## Step 28



- Using the flat end of a spudger, pry the rear camera off the rear bezel.
- Remove the rear bezel.

To reassemble your device, follow these instructions in reverse order.