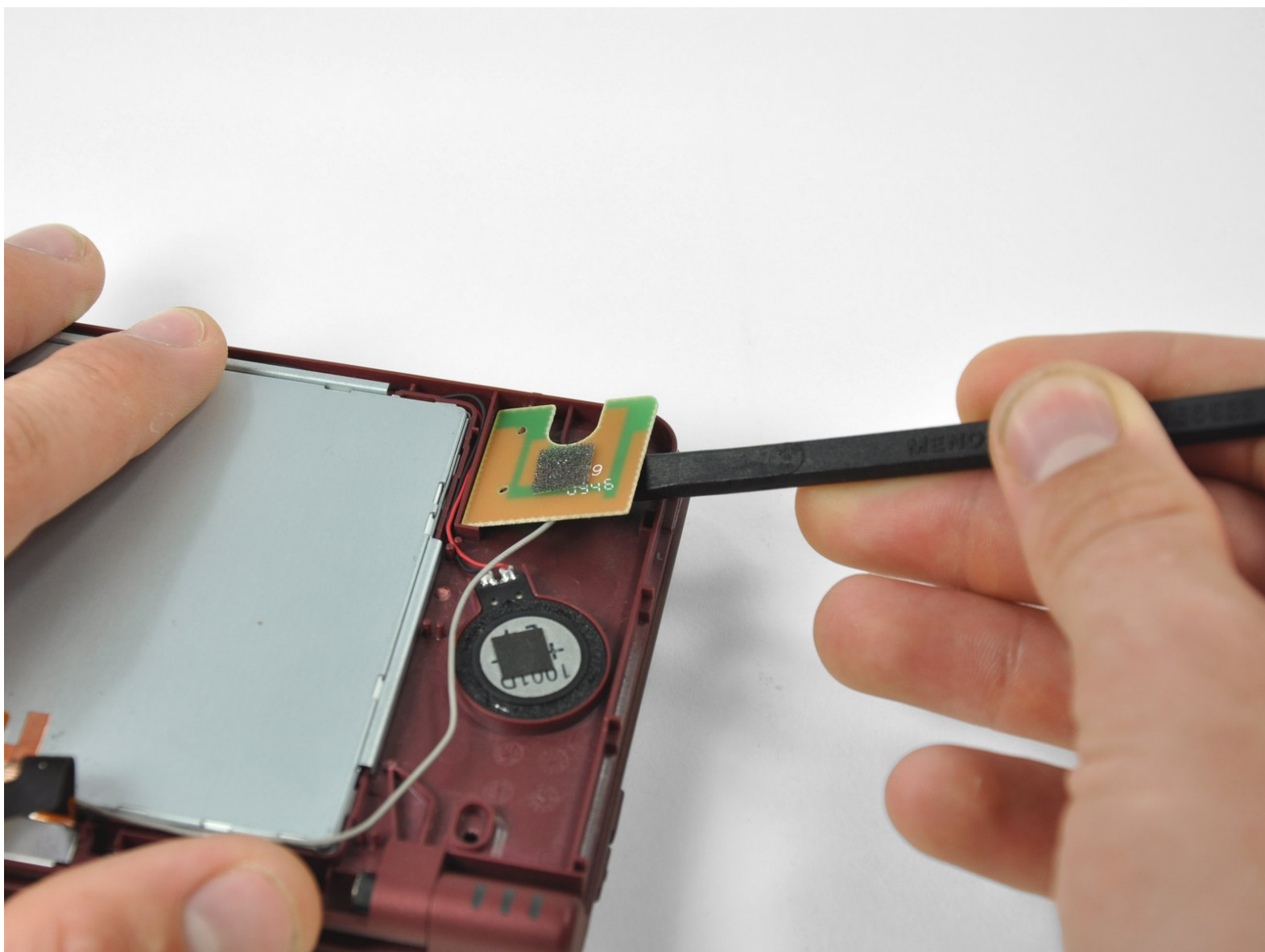




Nintendo DSi XL Speakers Replacement

Right speaker replacement.

Written By: Matthew Newsom



INTRODUCTION

Replace your DSi XL's speakers so you can hear Mario yell "Mamma mia" as clear as ever.



TOOLS:

- [Phillips #00 Screwdriver](#) (1)
- [Push Pin](#) (1)
- [Solder](#) (1)
- [Soldering Iron](#) (1)
- [Spudger](#) (1)



PARTS:

- [Nintendo DSi XL Speaker](#) (1)
- [Nintendo DSi DSi XL Right Speaker](#) (1)
- [Nintendo DSi DSi XL Left Speaker](#) (1)

Step 1 — Battery



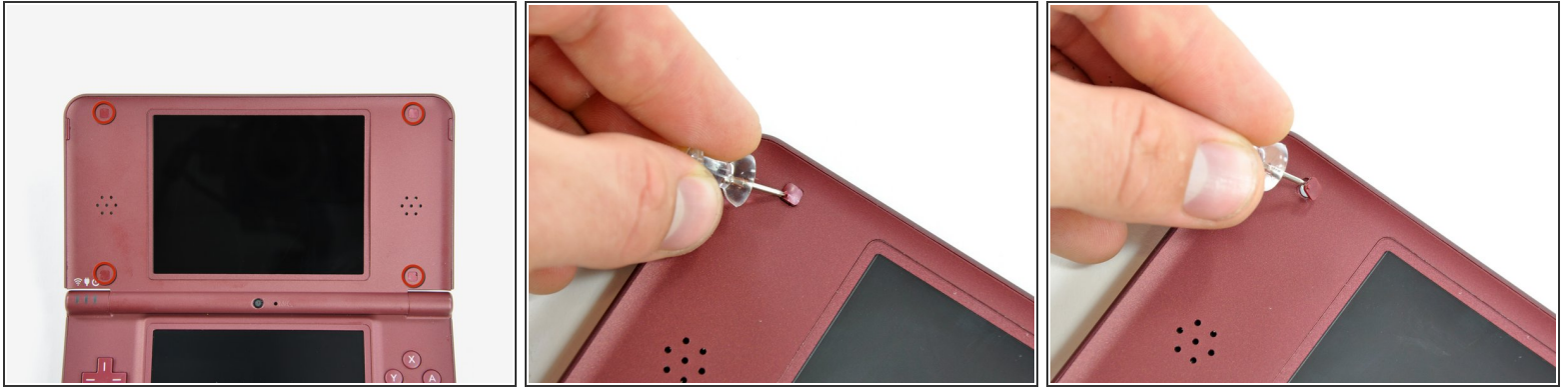
- Remove the two Phillips screws securing the battery cover to the back of the handheld console.
- Lift the battery cover off the back of the DSi XL.

Step 2



- Lift the battery from the DSi XL.

Step 3 — Rear Bezel



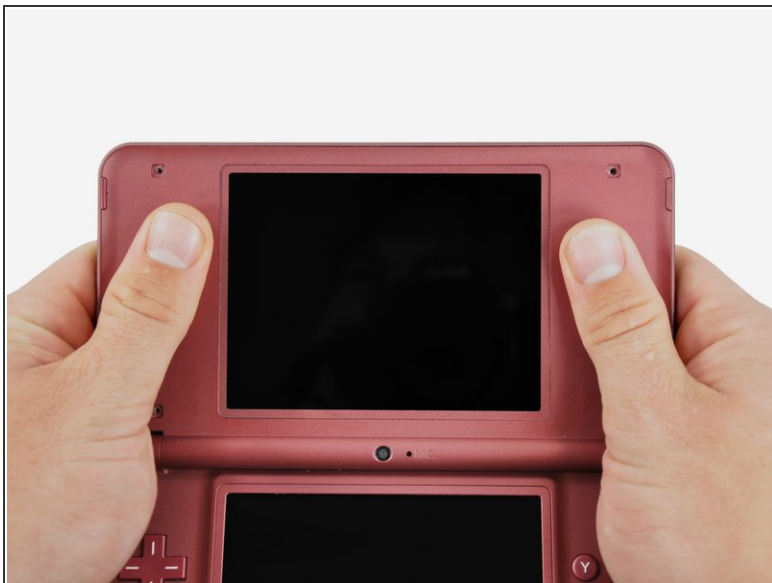
- Use a push pin to remove the four plastic screw covers on the front bezel.

Step 4



- Remove four Phillips screws securing the front bezel to the rear bezel.

Step 5



- Using two hands, gently slide the rear bezel upwards.
- ⓘ The rear bezel will move only about 2 mm.

Step 6



- Insert a spudger into the gap between the front and rear bezel
- Rotate the spudger away from the DSi XL, prying the two bezels apart.

Step 7



- In the same manner as described above, continue prying along the top edge of the front and rear bezels.

Step 8



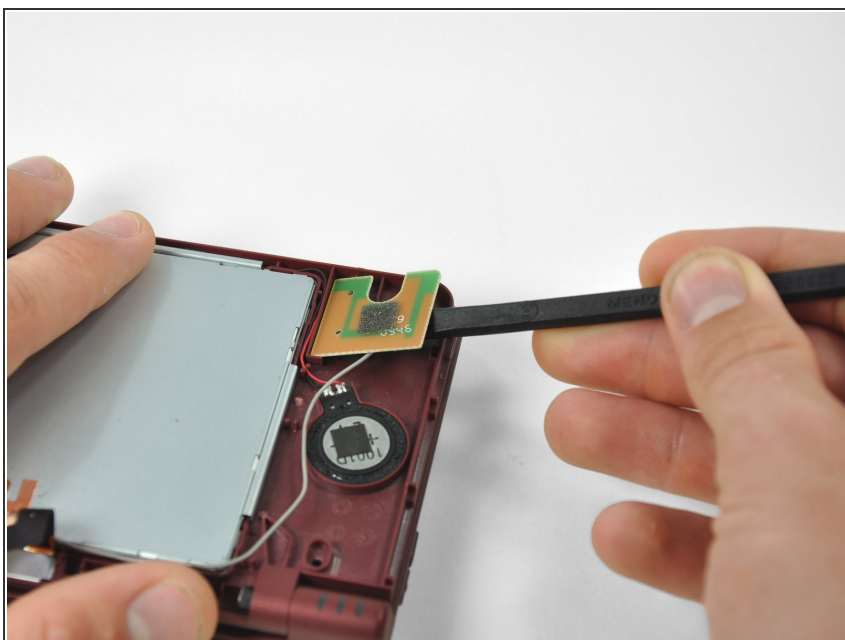
- Separate the rear bezel from the front bezel.
- ⚠ Do not attempt to completely remove the rear bezel yet. It is still attached to the front bezel by the rear-facing camera.

Step 9



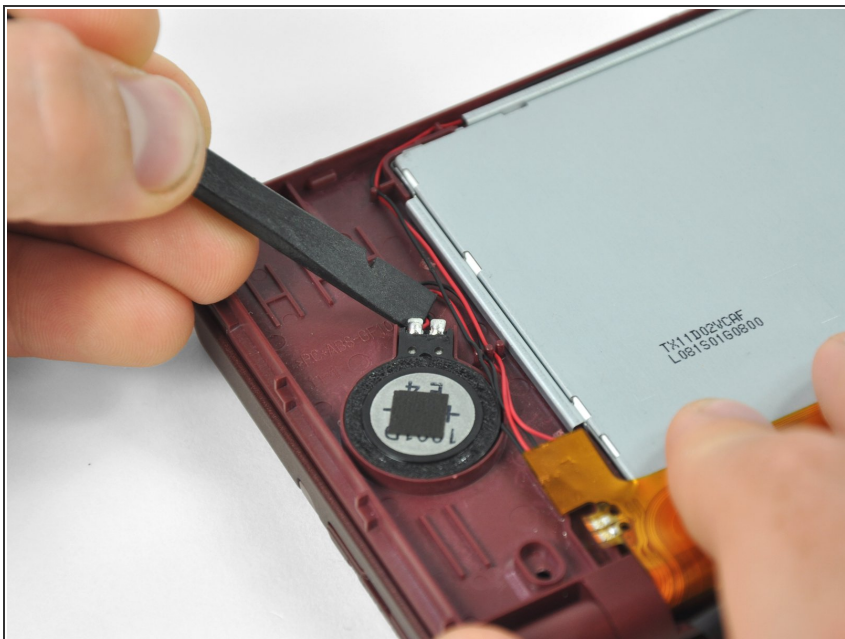
- Use the flat end of a spudger to pry the rear camera off the rear bezel.
- Remove the rear bezel.

Step 10 — Speakers



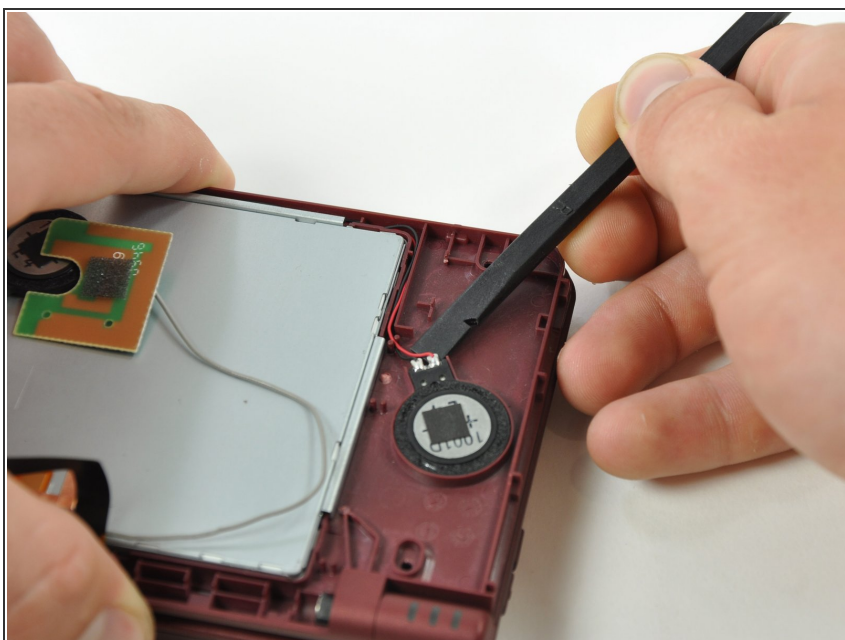
- Use a spudger to lift the antenna from the front bezel to make room for lifting the speaker cables up.

Step 11



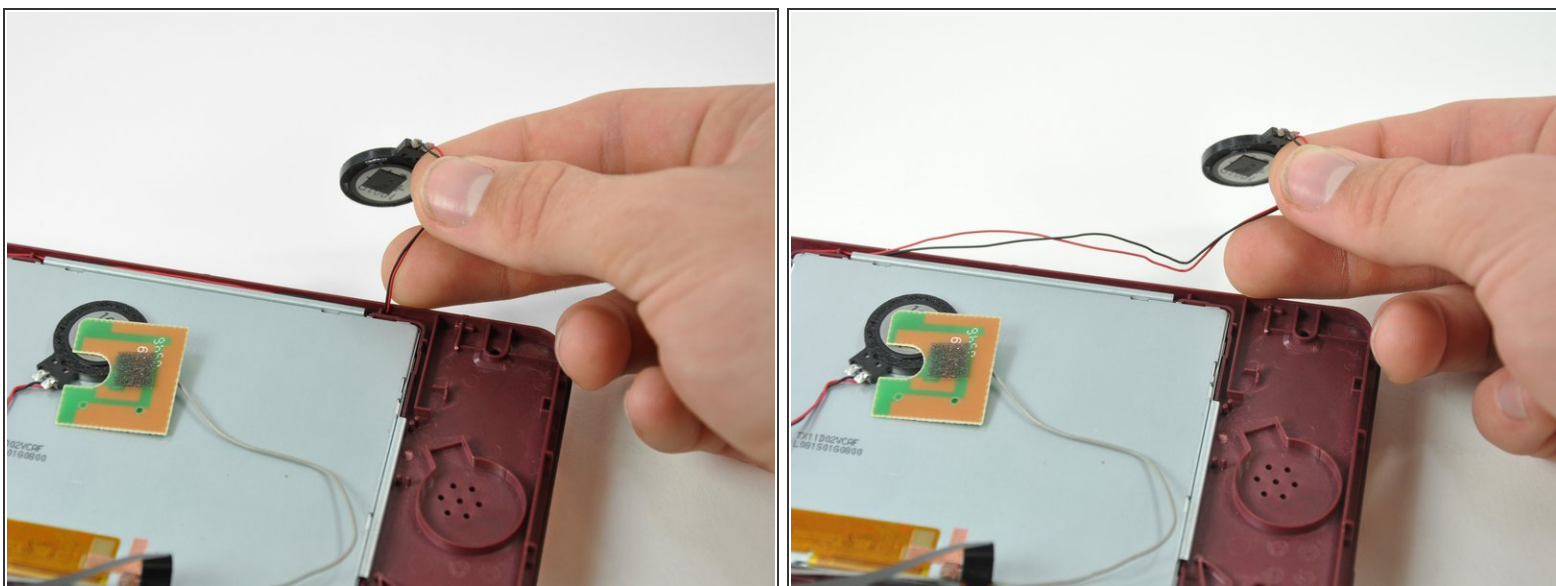
- Use a spudger to lift the right speaker from its housing in the front bezel.

Step 12



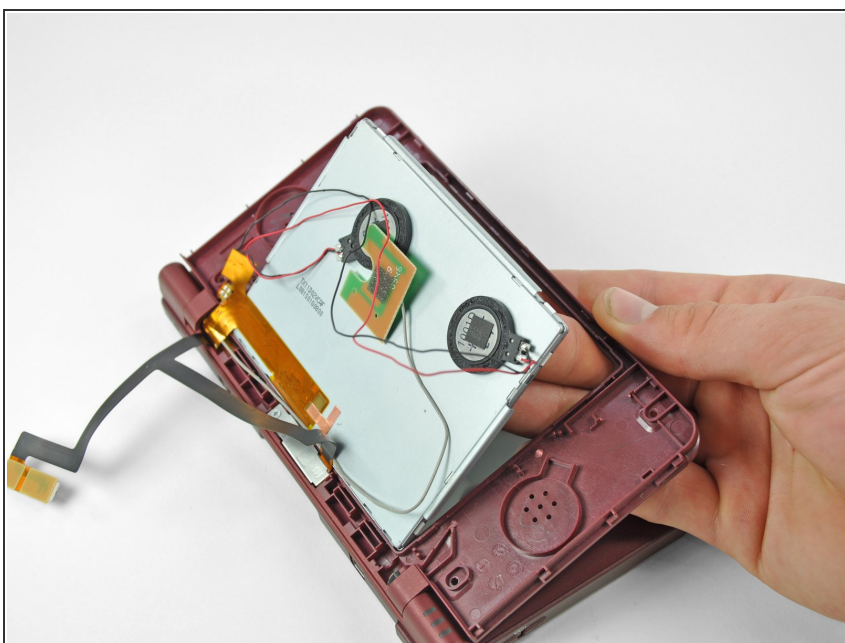
- Use a spudger to lift the left speaker from its housing in the front bezel.

Step 13



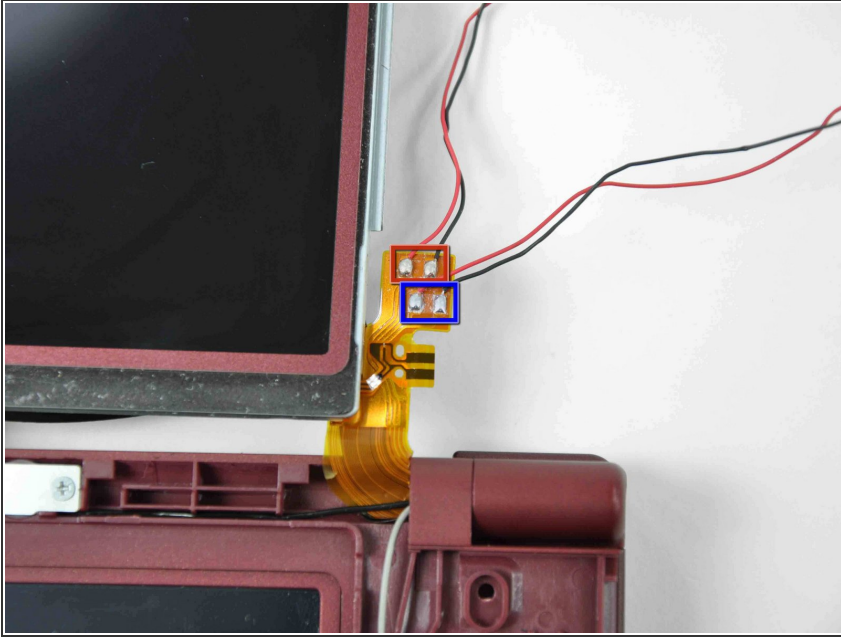
- De-route the left speaker cable along the top edge of the upper LCD.

Step 14



- Open the display slightly, and lift the LCD out of the front bezel.
 - Lay the LCD down next to the DSi XL.
- ⚠ Don't attempt to remove the LCD, it is still attached to the front bezel via the display data ribbon cable.

Step 15



- Desolder the two solder joints to separate the speakers from the LCD.
 - Right Speaker
 - Left Speaker
- i** For both speakers, the red wire (positive lead) is soldered to the left contact. The black wire (negative lead) is soldered to the right contact point.
- ★** For detailed instructions on how to solder this type of connection, see our guide for [repairing soldered connections](#).

To reassemble your device, follow these instructions in reverse order.