



Nintendo DSi XL Wi-Fi Board Replacement

Wi-Fi Board installation.

Written By: Brett Hartt



INTRODUCTION

Get back online by replacing the wireless card in your Nintendo DSi XL.



TOOLS:

- [Phillips #00 Screwdriver](#) (1)
- [Push Pin](#) (1)
- [Spudger](#) (1)



PARTS:

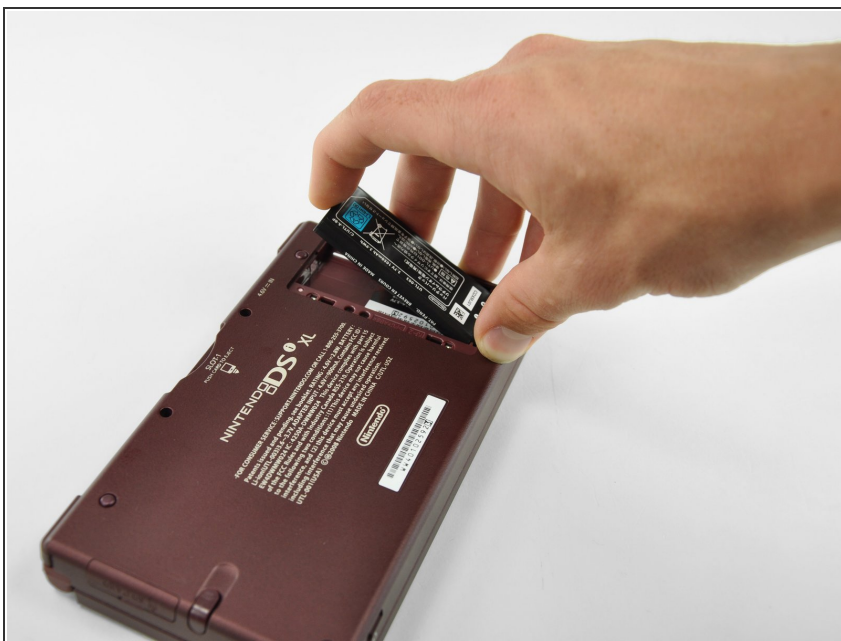
- [Nintendo DSi XL Wi-Fi Board](#) (1)

Step 1 — Battery



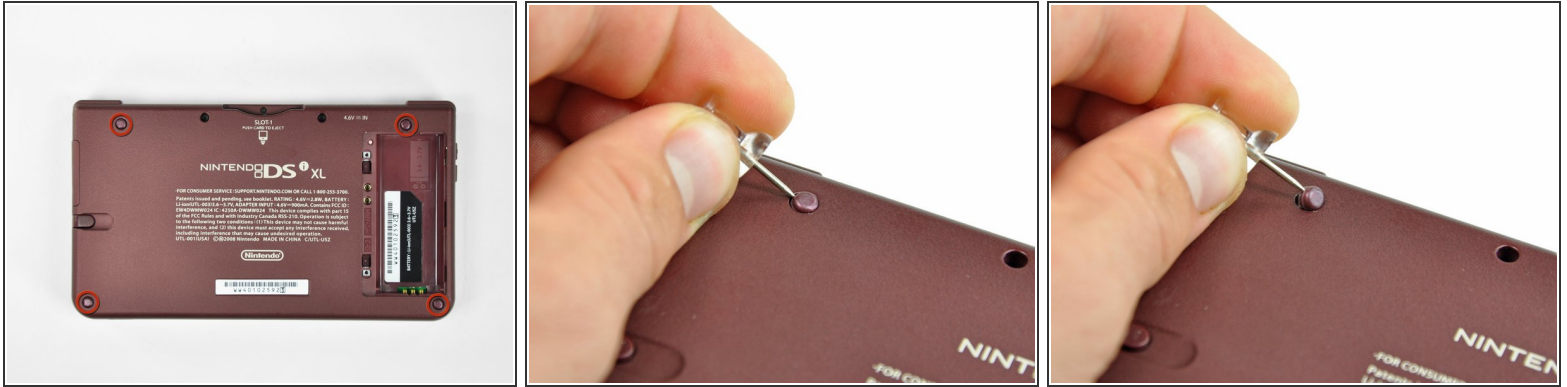
- Remove the two Phillips screws securing the battery cover to the back of the handheld console.
- Lift the battery cover off the back of the DSi XL.

Step 2



- Lift the battery from the DSi XL.

Step 3 — Lower Case



- Remove the four rubber screw covers on the lower case by prying them up with a push pin.


Step 4



- Remove the following seven Phillips screws that secure the lower case to the rest of the DSi XL:
 - Four silver 5.3 mm screws
 - Two black 5.3 mm screws
 - One black 2.5 mm screw

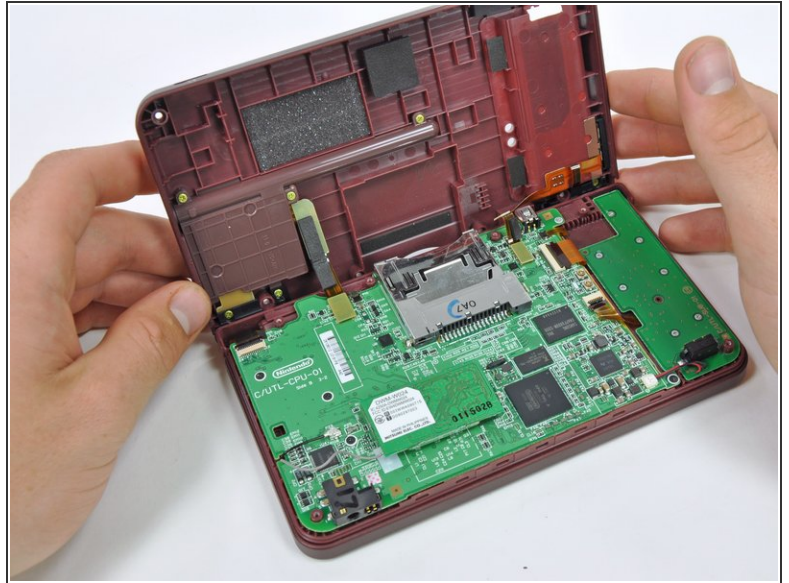
Step 5



 Turn the DSi XL over, and open the display.

- Insert a spudger between the upper and lower case at the bottom left corner of the DSi.
- Slide the spudger along the bottom edge of the upper case to release the latches securing the upper case to the lower case.

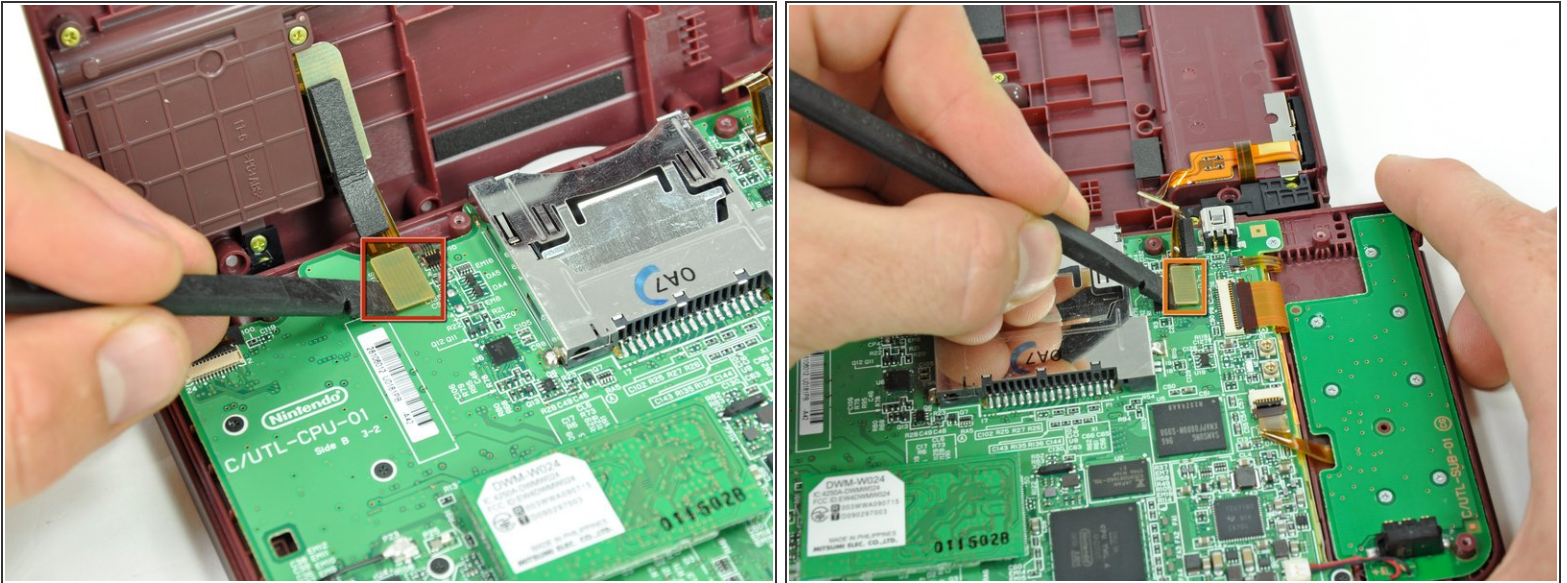
Step 6



- i** Close the display and turn the DSi XL over.

 - Lift the lower case from the front edge.
 - Rotate the lower case away from the DSi.
- i** The lower case cannot be completely removed yet, since it is still connected to the motherboard.

Step 7



- Using a spudger, pry the SD card/right shoulder button connector off its socket.
- Pry the volume button/left shoulder button connector off its socket on the motherboard with a spudger.

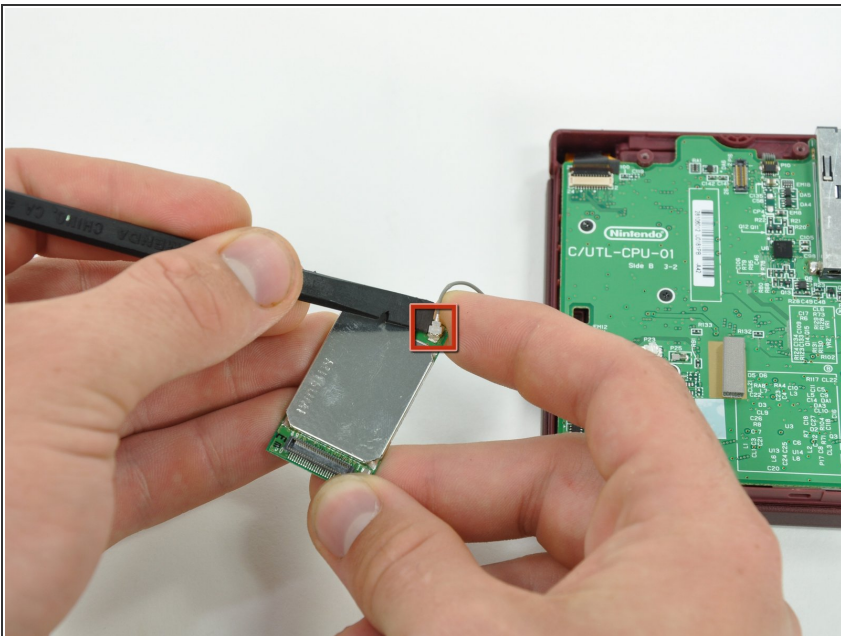
Step 8 — Wi-Fi Board



- Lift the Wi-Fi board up off its socket on the motherboard.

⚠ Do not attempt to completely remove the Wi-Fi board yet. It is attached to the motherboard by an antenna cable.

Step 9



- Use a spudger to pry the Wi-Fi cable off its socket on the underside of the Wi-Fi board.

To reassemble your device, follow these instructions in reverse order.