



# Nintendo DSi XL Wi-fi Board Teardown

Want to Know how to get to the Wifi Board inside the Dsi xl.

Written By: Gabriel Rendon



# INTRODUCTION

Want to Know how to get to the Wifi Board inside the Dsi xl.



## TOOLS:

- [Push Pin](#) (1)
- [Spudger](#) (1)
- [Phillips #00 Screwdriver](#) (1)



## PARTS:

- [Nintendo DSi XL Wi-Fi Board](#) (1)

## Step 1 — Nintendo DSi XL Wi-fi Board Teardown



- Remove the two screws at the place of the battery under the Dsi XL.
- Lift the protector from the battery.

## Step 2



- Take the battery off the Dsi XL.

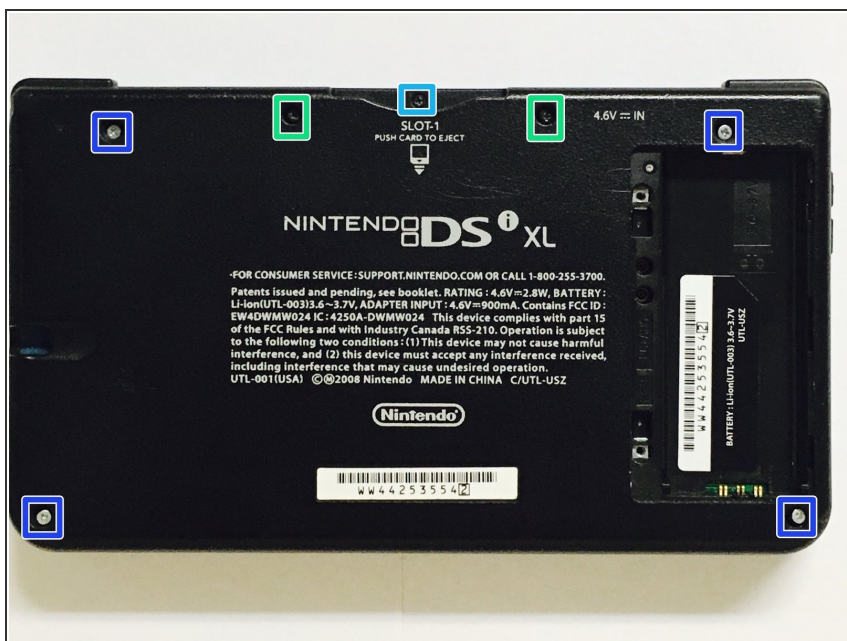


### Step 3



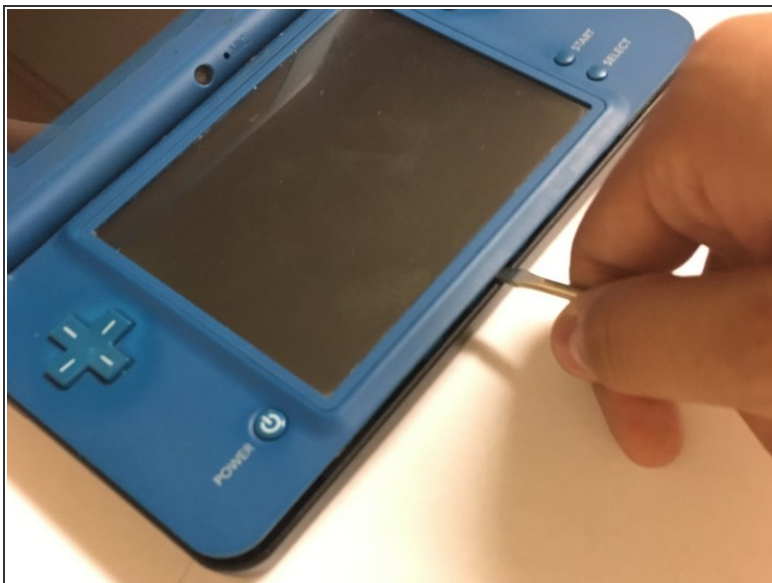
- Remove the rubber blocking the screws on the Dsi XL with a push pin don't hesitate about it.

### Step 4



- Remove the presenting screws in order to take the bottom part of the Dsi XL off.
- x4 silver 5.33m screws
- x2 black 5.3m screws
- x1 black 2.5m screw

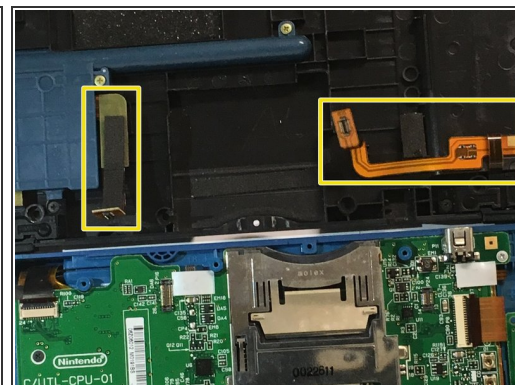
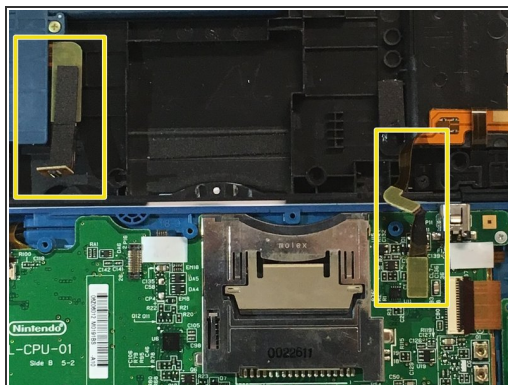
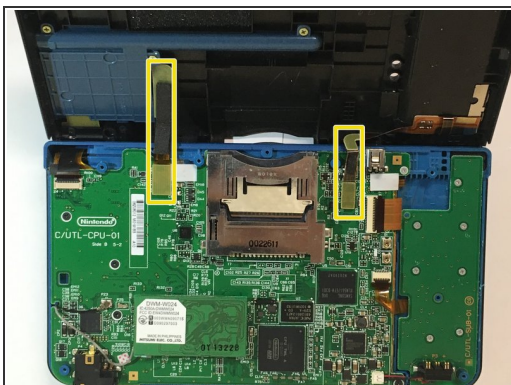
## Step 5



**i** Turn the Dsi XL over & open it.

- Insert the spudger (or anything similar to it) between the upper and lower part of the case at the left or right corner it doesn't really matter.
- Keep on doing the same around the case.

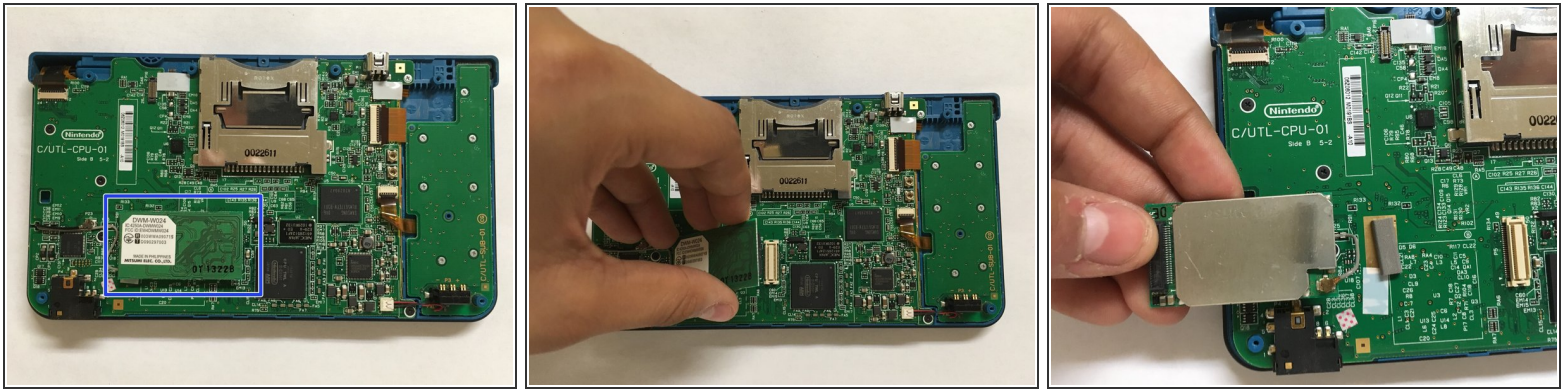
## Step 6



- Using your hands unconnect the connectors from both sides ( you can always put them back.)

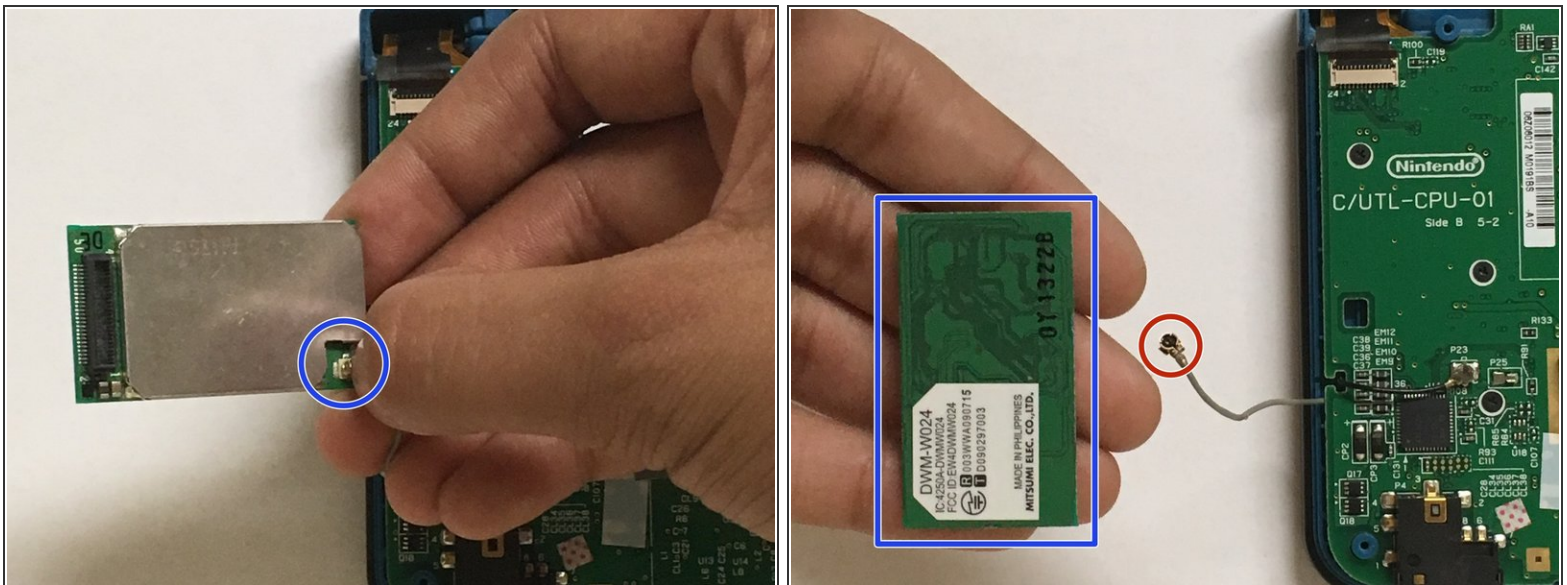


## Step 7



- Lift the Wi-fi Board off of its socket.(you can also put this back.)

## Step 8



- Pull off the Wi-fi cable from The Wi-fi Board.
- ⚠ Careful while this process in which this peice can easily rip off.
- Finally you've finished and you have Dsi XI Wi-fi Board:)