



# Nintendo Entertainment System Controller Cable Replacement

Use this guide to repair or replace the cable of a Nintendo Entertainment System Controller.

Written By: themap09



---

## INTRODUCTION

This is a very straight forward repair. Soldering skills are required.

---



### TOOLS:

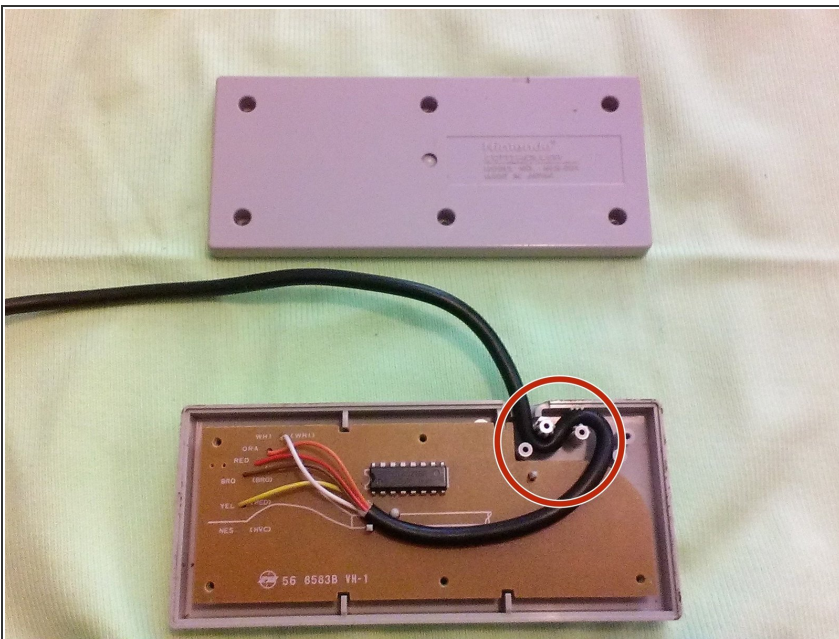
- [Phillips #1 Screwdriver](#) (1)
  - [Soldering Workstation](#) (1)
-

## Step 1 — Back Cover Removal



- Remove the 6 8mm screws in the back cover using a #1 Philips screwdriver.

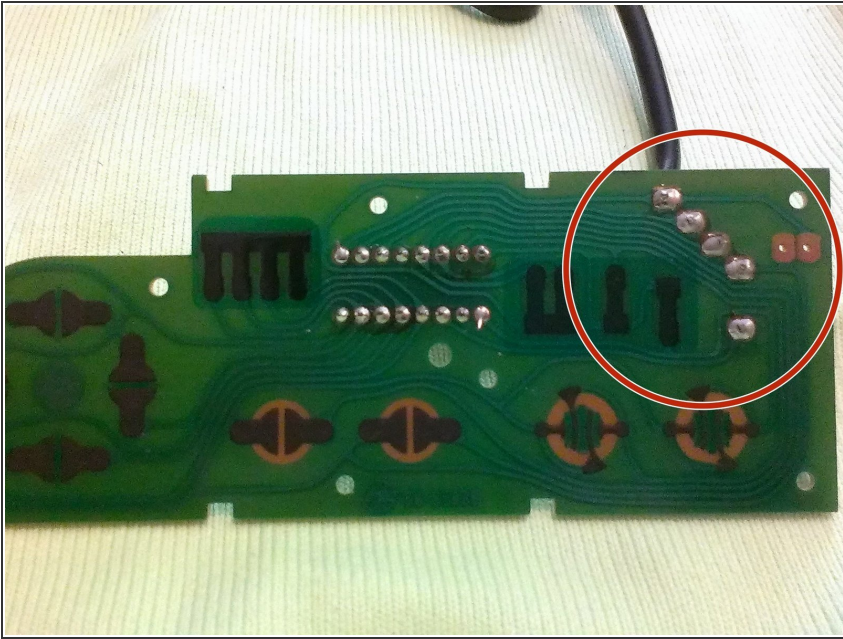
## Step 2 — Loosen Cable



- Lift the back cover off the controller.
- Remove the cable from its holders to facilitate PCB removal.



## Step 3 — PCB Removal



- Lift the PCB straight up and out of the controller. Turn the board over to access the solder joints for the cable.
- Desolder the 5 connections and solder in your new cable.
- ⓘ Wire colors are printed on the reverse side of the board.

To reassemble your device, follow these instructions in reverse order.