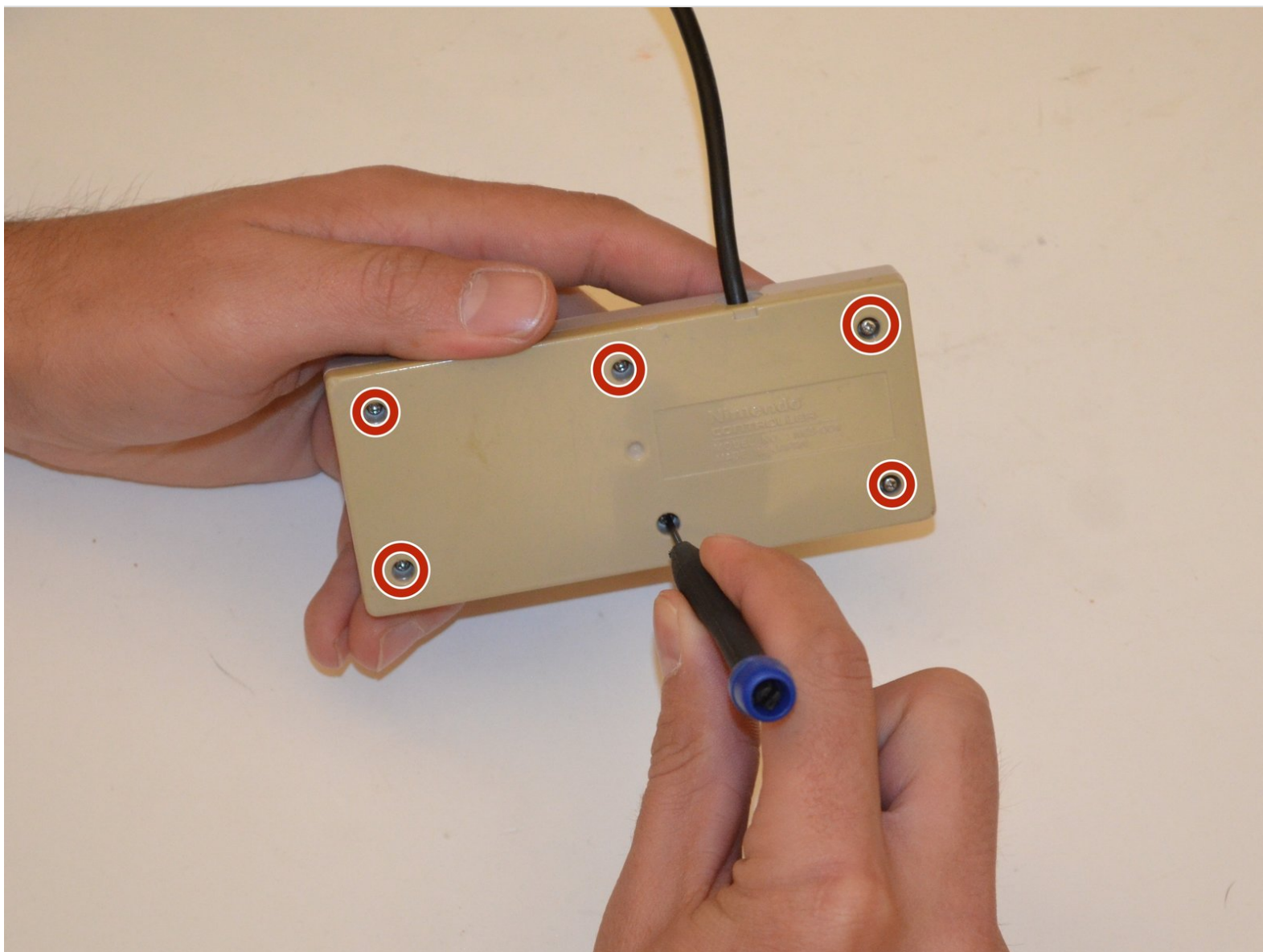




Nintendo Entertainment System Controller Maintenance

This guide addresses common issues with the NES-004 controller and how to fix them. This repair will require 24 hours with 45 minutes of actual repairs. The repair may require the use of a soldering iron, check the iFixit soldering guide for help.

Written By: Andrew Churchill



INTRODUCTION

The NES-004 controller was part of the third generation of videogame systems. It evolved the concept of the videogame controller from a primarily analog or dial systems. The NES-004, introduced in America, a template that would set the stage for almost every successive controller. The NES-004 featured an all-digital input with directional controls placed on the left and action controls placed on the right. Although the NES is an older generation gaming system the games are still fun and hobbyists are still creating new 8-bit games. Designed to be simple and easy to produce, the NES controller is very durable with many still surviving to this day. While the outside of the controller seems simple, the real magic happens inside. Lying in-between the two outer gray plastic case pieces is the printed circuit board. Being made of a nonconductive material it is what the rest of the components in the controller are hooked to. Eight metal circles split in half by nonconductive material lie under the eight buttons from the face. Between this circle and the plastic buttons above is a rubber garment with a metallic piece. The metallic piece completes the broken circuit when the player presses the button. The input is sent down onto the five wires inside the cable to the console, at the solder points that connect the two. It is at the points of connections between the button to the controller and controller to the cable that issues most often arise. This guide will aim to address these common issues. Connecting the players input, with stories to play through, allows the player to immerse themselves in to a visual adventure. With the emergence of newer games created by hobbyists, and old classics, many gamers find a NES Controller in need of these simple repairs.



TOOLS:

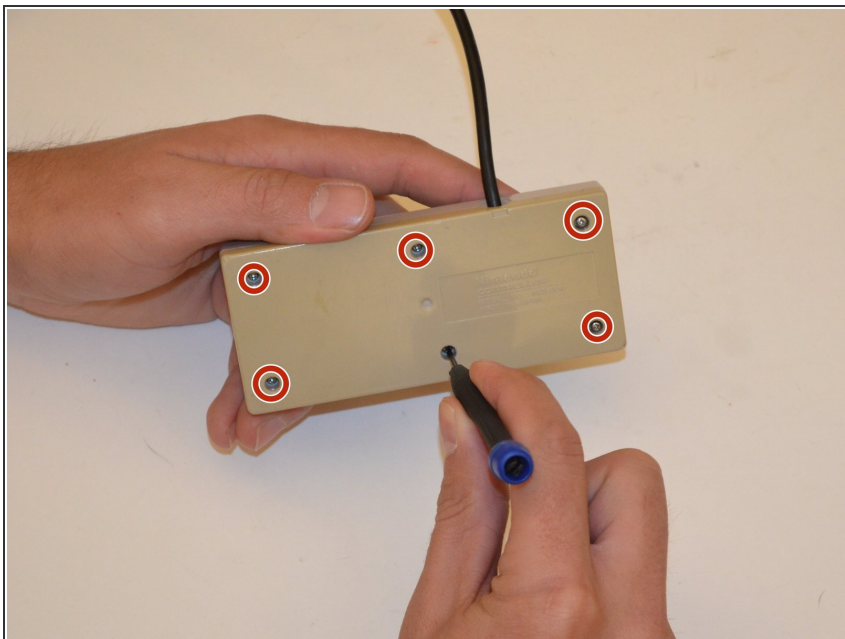
- [Small Phillips Head Screwdriver](#) (1)
- [Glue Gun](#) (1)
- [Flathead 3/32" or 2.5 mm Screwdriver](#) (1)
- [Magnetic Project Mat](#) (1)
- [Soldering Iron](#) (1)



PARTS:

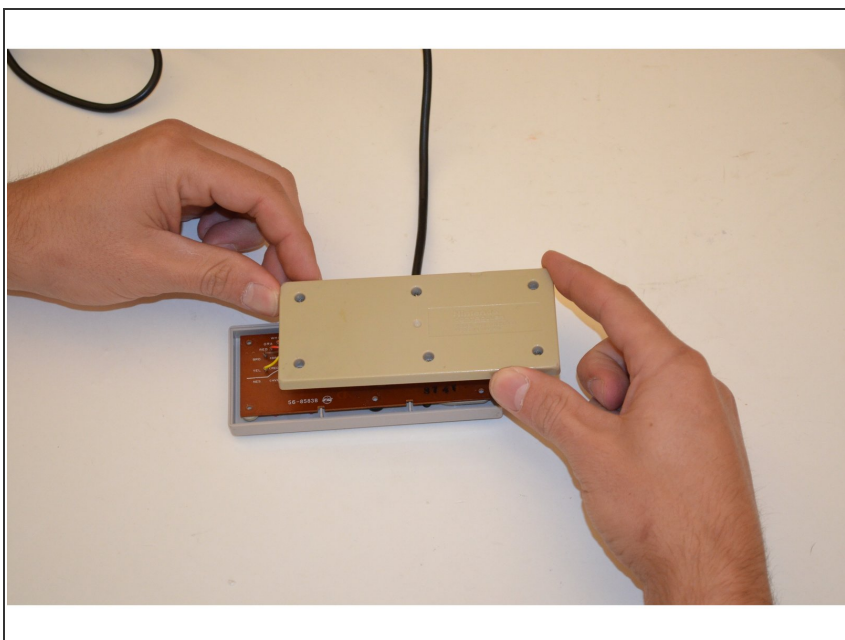
- [Rubber Cement](#) (1)
- [Q-Tips](#) (1)
- [Solder](#) (1)
- [91% Isopropyl Alcohol](#) (1)

Step 1 — Nintendo Entertainment System Controller Maintenance



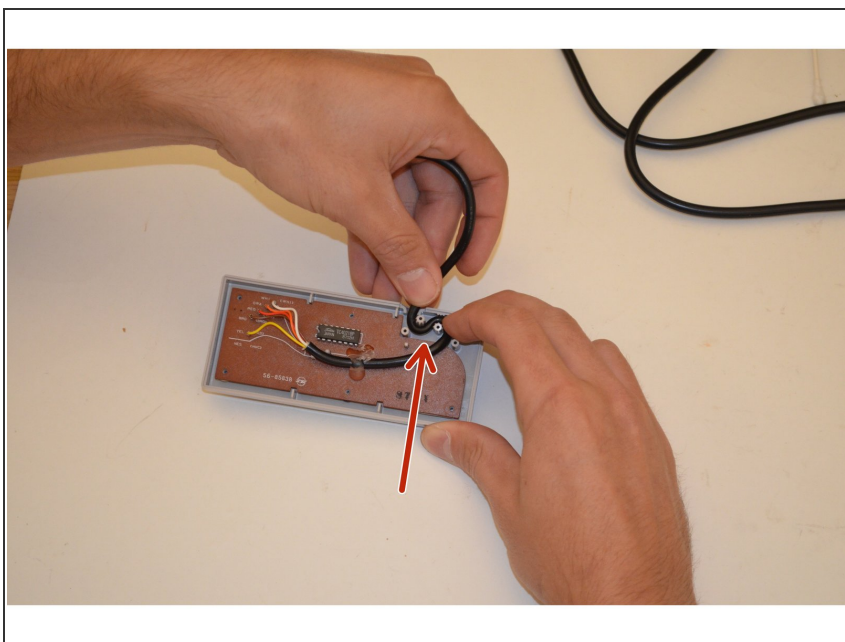
- Unscrew the six 13 mm screws with the Philips screwdriver.

Step 2



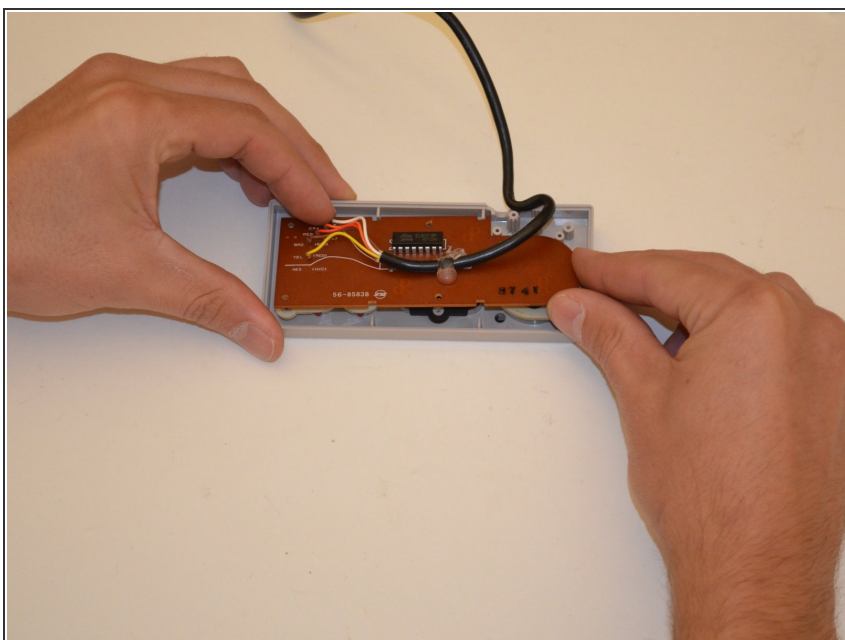
- Lift the controller back plate straight off of the controller then set aside.

Step 3



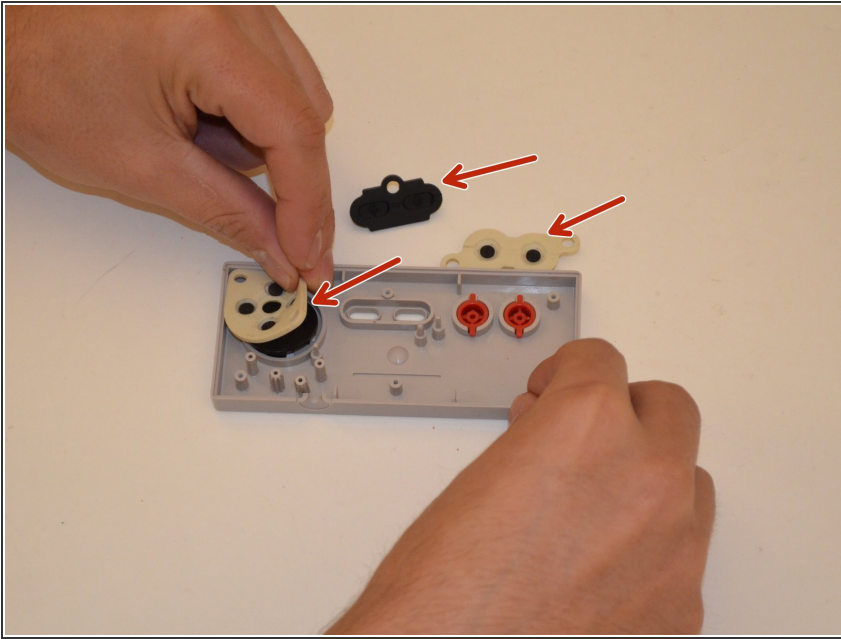
- Unwind the cable from plastic poles.

Step 4



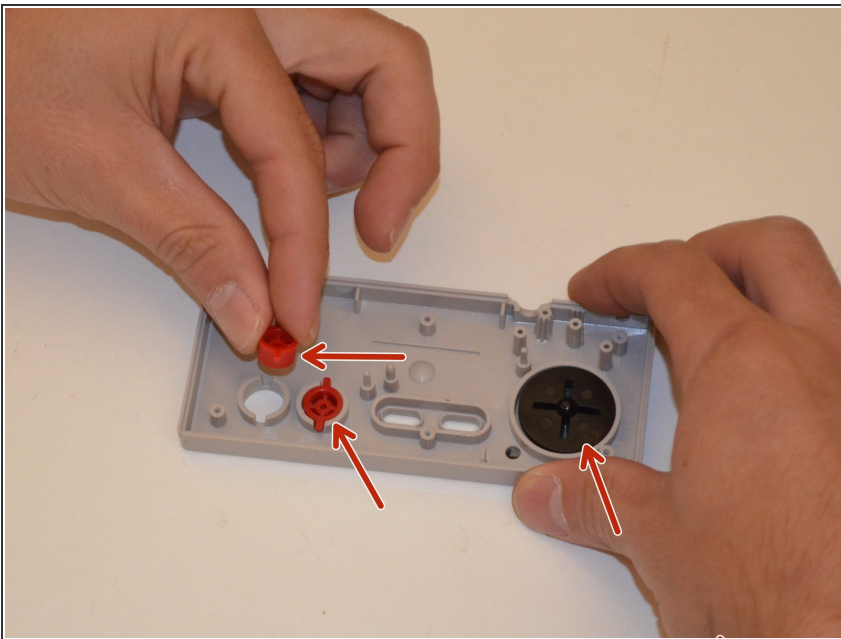
- ⓘ Gently remove the circuit board from the controller face. Use a non marring object to lever up board if it is stuck.

Step 5



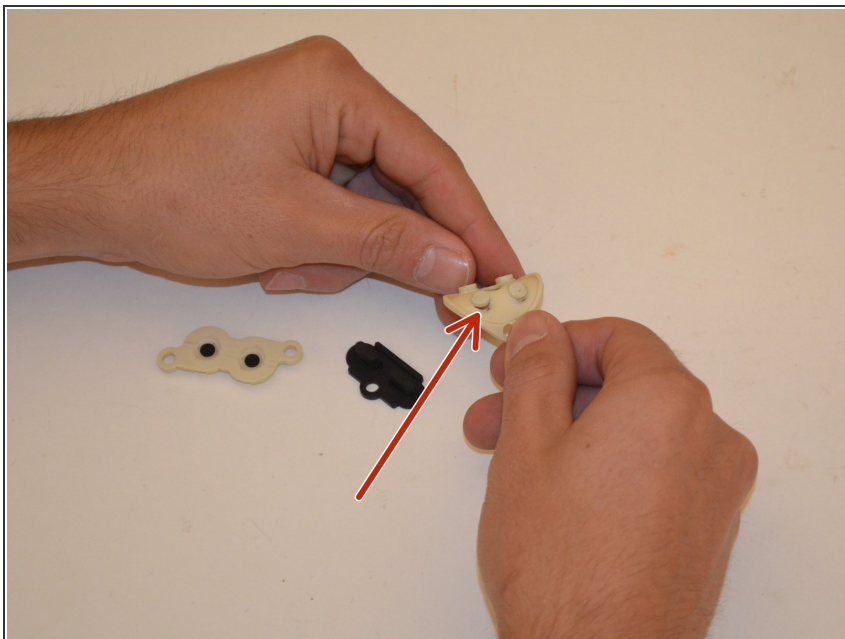
- Remove the indicated rubber pads.

Step 6



- Remove all plastic buttons. Clean the buttons and controller with soap and water.

Step 7



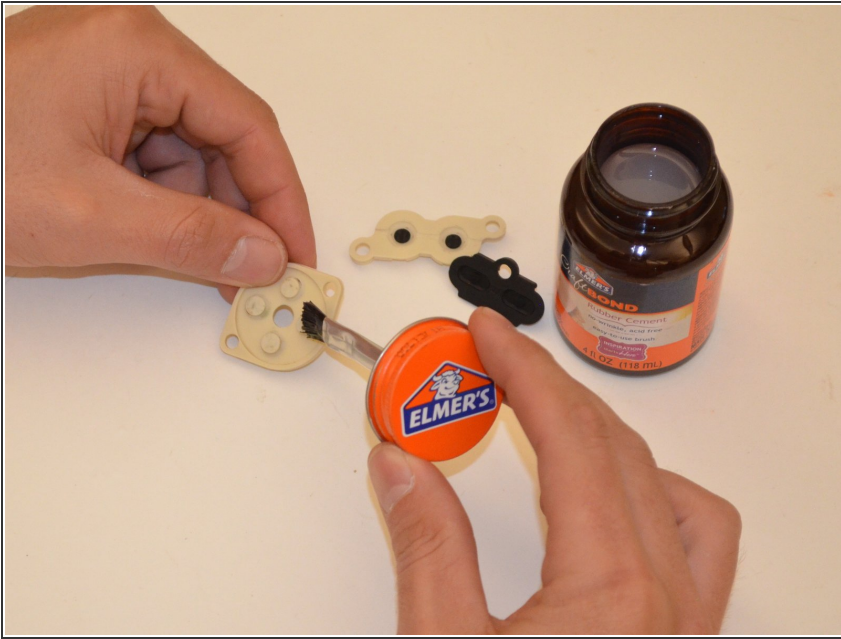
- Inspect each rubber pad for tears or cracks and making note of any tears.

Step 8



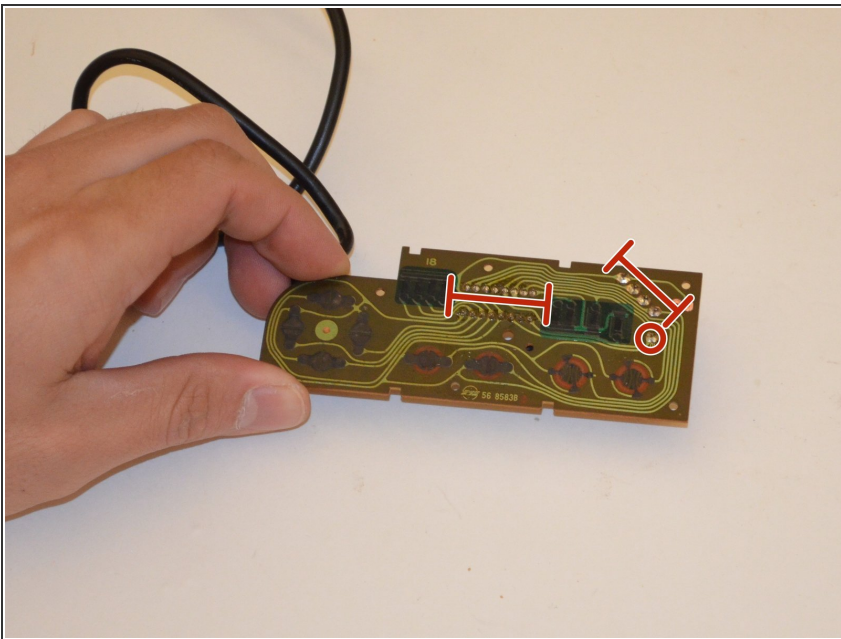
- Clean all pads with rubbing alcohol; focus on cleaning the black conductive circles on the underside of the pads.

Step 9



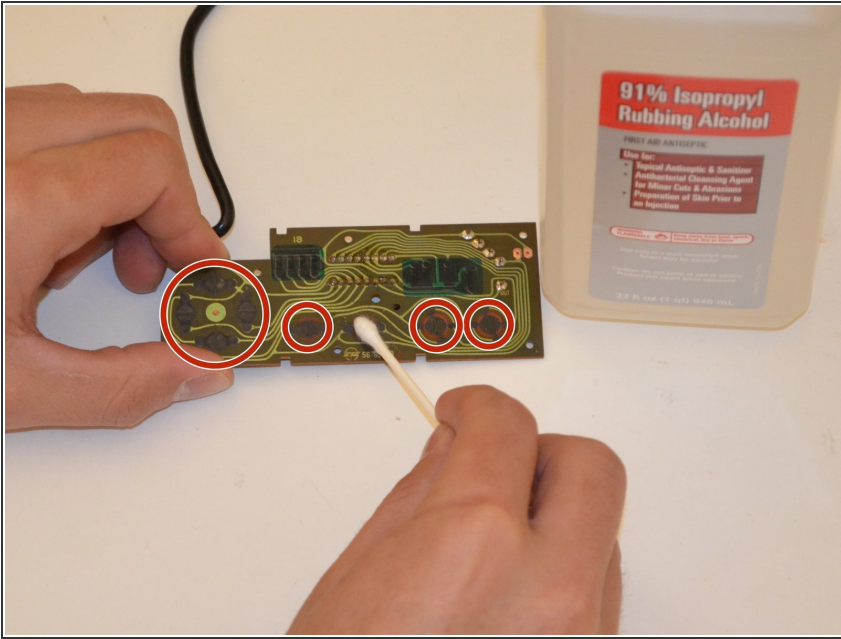
⚠ Once clean, apply thin layers of rubber cement to any deformation. Allow cement to dry and apply multiple layers as needed. Do not over apply rubber cement as it can cause the pads to warp as it dries.

Step 10



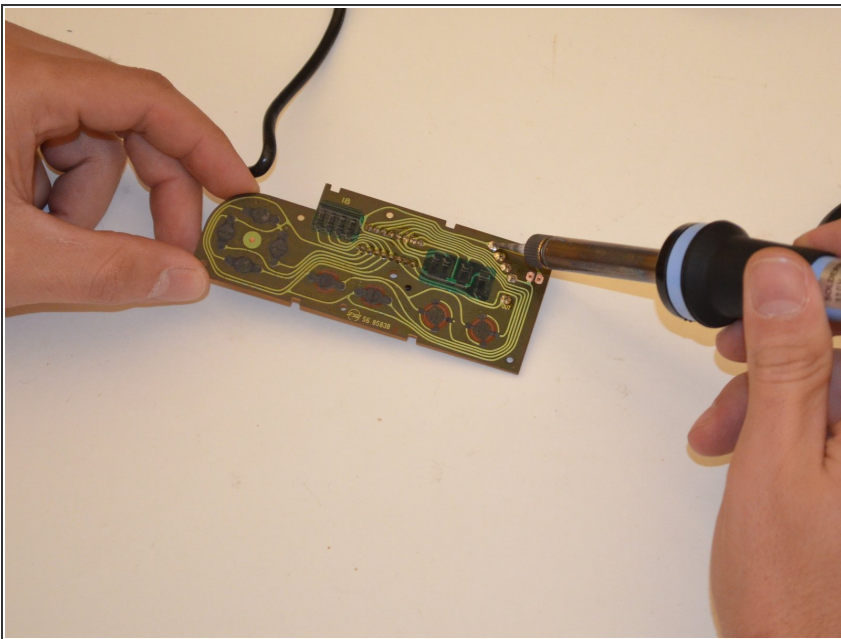
- Inspect all solder points for loose connections.

Step 11



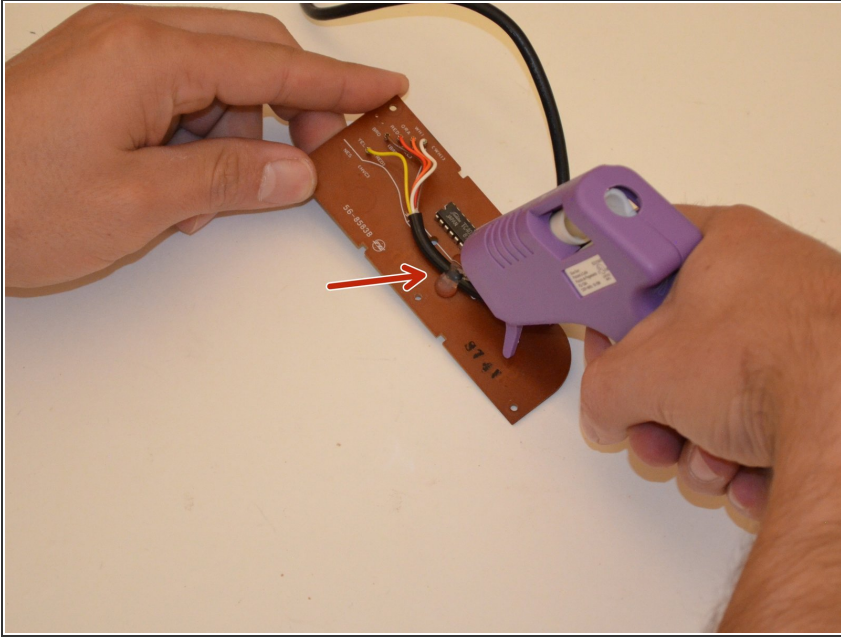
- ❗ Clean the input contacts with 91% Isopropyl Alcohol on a Q-tip

Step 12



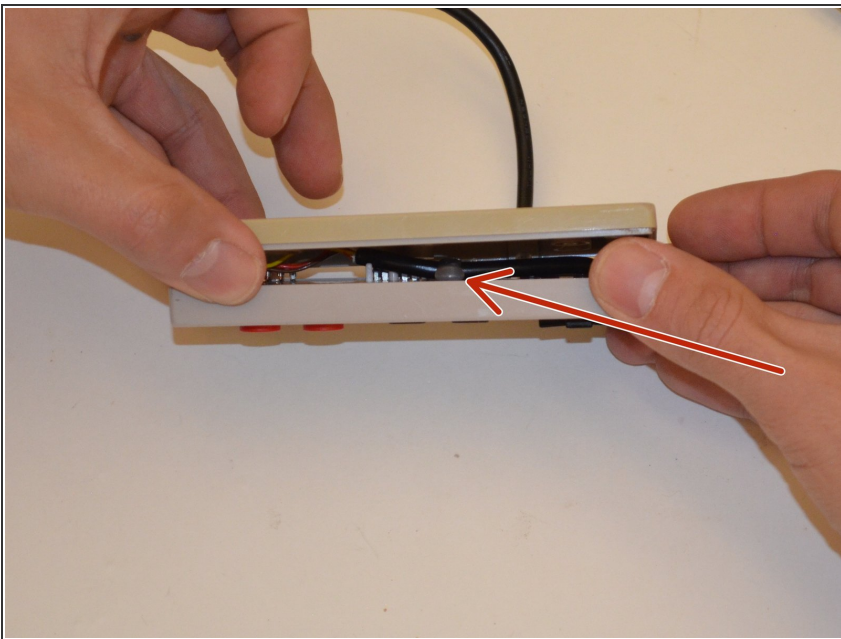
- ⚠ [How To Solder and Desolder Connections](#) Read the iFixit soldering guide and do not attempt this step if you are not confident in your ability to do so safely. Re-solder any loose wires on the circuit board. Ensure that all 91% Isopropyl Alcohol has evaporated. If necessary perform any soldering away from the area in which you cleaned the controller.

Step 13



⚠ Glue the cord onto the circuit board to prevent future loosening of the wires. Leave slack on both sides and allow glue to harden. Allow any recently soldered points to cool back to room temperature before performing this step.

Step 14



- Reverse steps from 6 through to 2 to reassemble controller. Before replacing screws make sure the controller back fits tightly to the controller face. If needed trim excess glue from around the cord to ensure a good fit.

Step 15



- Plug in your repaired controller and try all buttons and actions to test controller function and responsiveness

Thank you for using our step by step controller guide. Enjoy your NES games!

If the controller isn't working after this guide, re-check the soldering points, and redo as necessary. If this still doesn't fix the controller you may have to get a new wire.