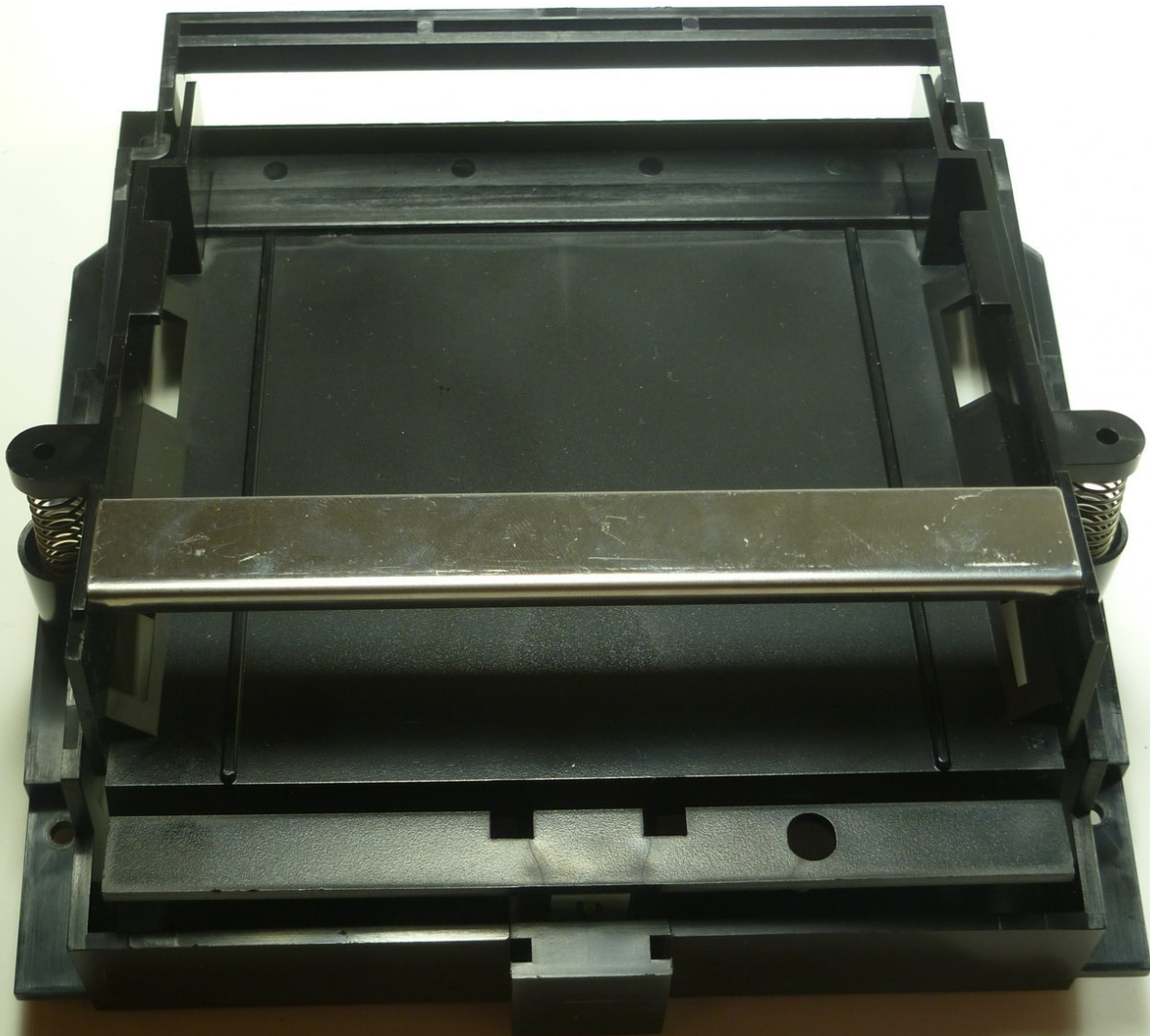




# Nintendo Entertainment System Game Cartridge Tray Springs Replacement

Replace your worn out springs used to eject the game cartridge.

Written By: nicholasweiser



## INTRODUCTION

The springs located in the cartridge tray ware out over time and must be replaced. Follow our guide to show you how to remove the springs.



### TOOLS:

- [Flathead 3/32" or 2.5 mm Screwdriver](#) (1)
- [Phillips #2 Screwdriver](#) (1)



### PARTS:

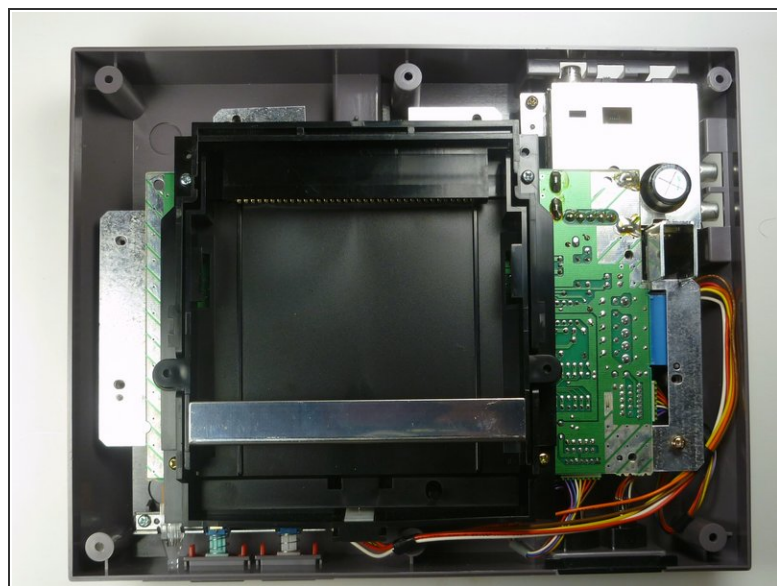
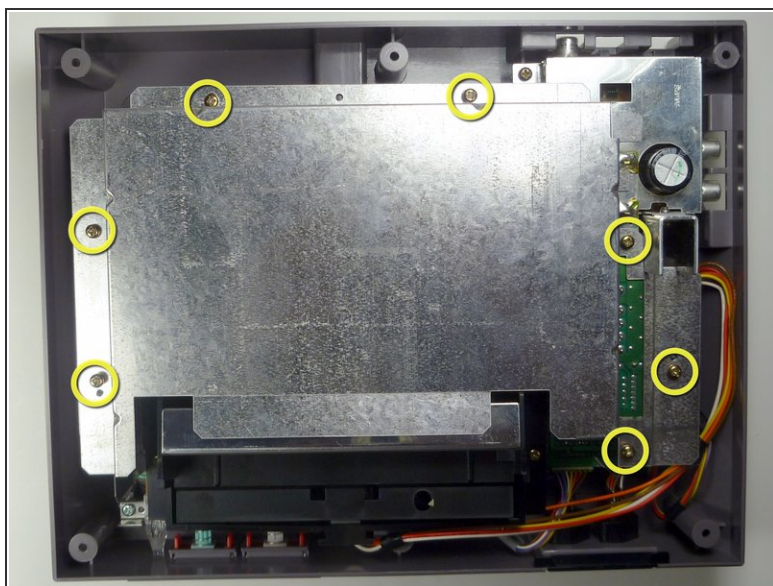
- [Nintendo NES-001 Game Cartridge Tray](#) (1)

## Step 1 — Game Cartridge Tray



- Remove the six 13.25mm Phillips screws on the bottom of the game console with a #2.5 flathead screwdriver.
- ⓘ The screws are recessed about 40 mm.
- Flip the game console right side up and take off the top by pulling it up and away from the rest of the device with your hands.

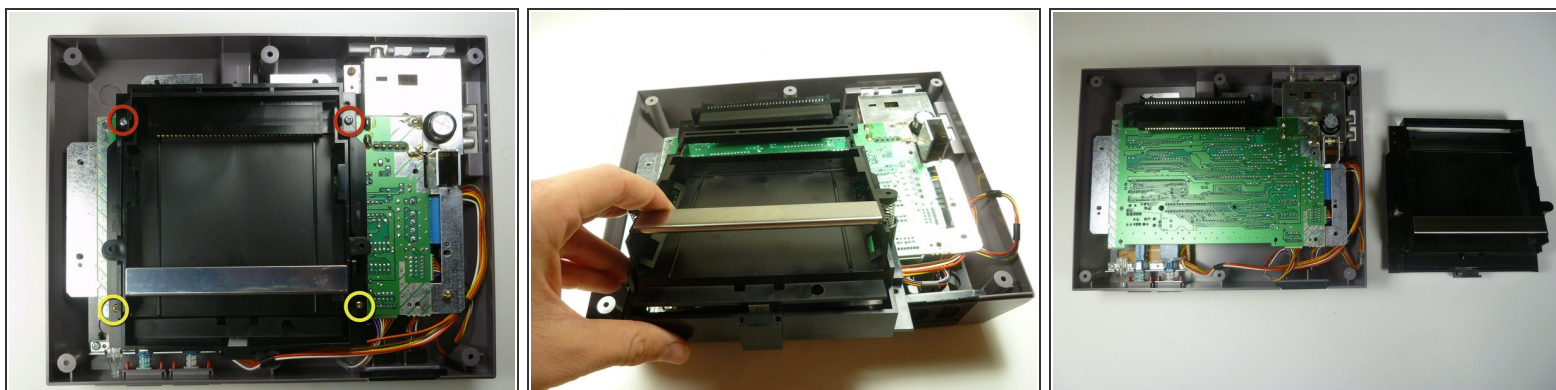
## Step 2



- Remove the seven 13.25mm Phillips screws from the metal cover with a Phillips head #2 screwdriver.
- Remove the metal cover by pulling it up and away from the rest of the console with your hands.

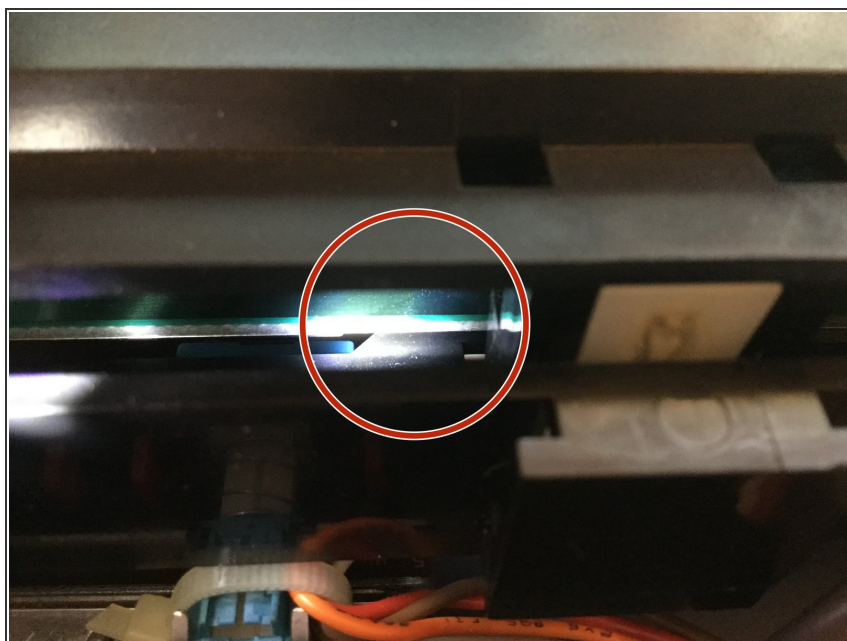


### Step 3



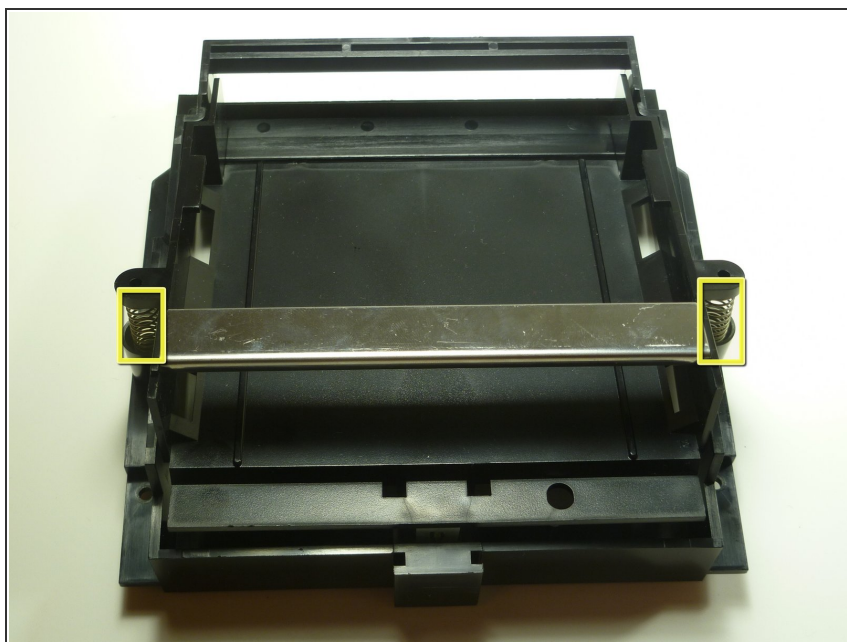
- Remove the two silver 17.45mm Phillips screws from the cartridge tray using a Phillips head #2 screwdriver.
- Remove the two bronze 13.25mm Phillips screws from the cartridge tray using a Phillips head #2 screwdriver.
- Slide the cartridge tray toward you, away from the 72-PIN connector, and off the motherboard assembly.

### Step 4



- Underneath the cartridge tray is a black tab/lip (see marker).
- ⚠ Make sure you orient this tab underneath the motherboard in addition to orienting the tray on top. Failure to do so will bow the cartridge tray and place stress on the component.

## Step 5 — Game Cartridge Tray Springs



- Push down on the spring with your finger and pull out of the plastic casing.
- ⓘ If only one spring is worn out, replace only that spring.

To reassemble your device, follow these instructions in reverse order.