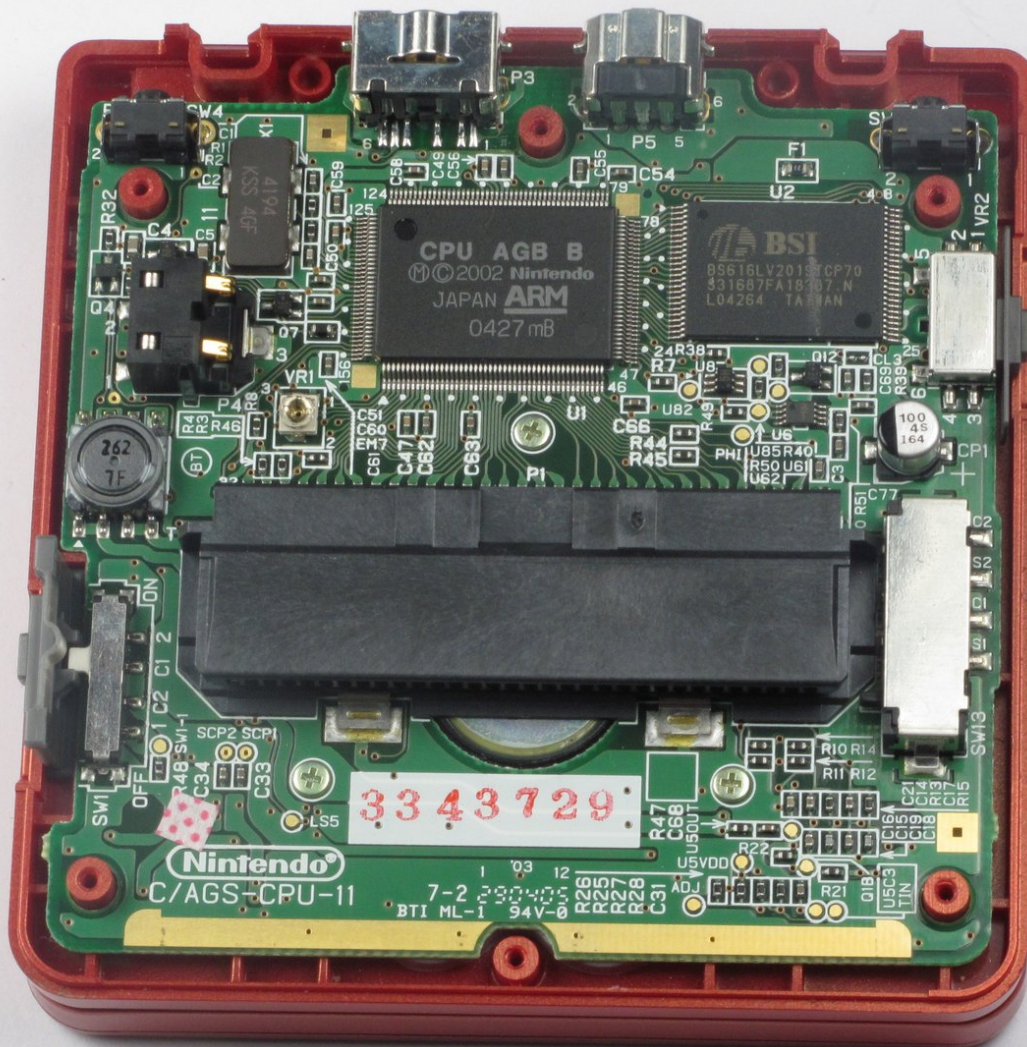




Nintendo Game Boy Advance SP Back Cover Replacement

This guide will show you how to remove the back cover of your Game Boy Advance SP. It is a prerequisite guide to all the the installation guides minus the guide for replacing the battery.

Written By: Rocco Lattanzio



INTRODUCTION

The back cover is the only layer between the motherboard and the many things things that can ruin the motherboard. Expect the six screws that hold the cover to the device to be fastened tightly.



TOOLS:

- [Phillips #00 Screwdriver](#) (1)
 - [Tri-wing Screwdriver](#) (1)
-

Step 1 — Removing the Battery



- Use a standard Phillips #00 screwdriver to loosen the 4mm screw that keeps the battery cover attached to the device.

Step 2



- Lift the battery cover up and remove it from the device.
- ⓘ The screw will remain attached to the battery cover because of Nintendo's design.

Step 3



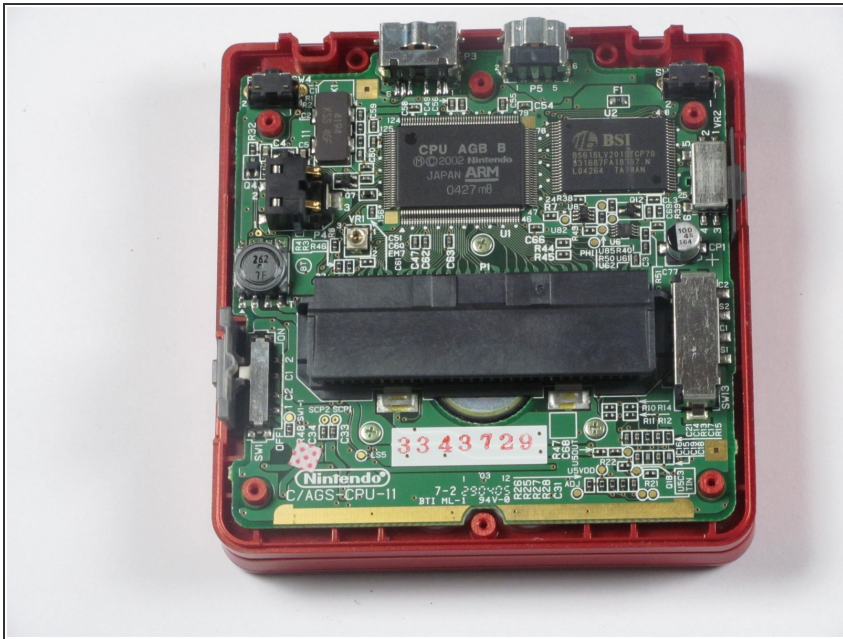
- Use your fingers or a plastic opening tool to remove the battery from the device.

Step 4 — Removing the Back Cover



- Using the tri-wing screwdriver, unscrew the screws holding the back cover to the device. The six screws that need to be removed include:
 - Four #00 6.45mm tri-wing screws that are located at the corners of the device.
 - Two #00 4.6mm tri-wing screws that are located at the top-center and bottom-center of the device.

Step 5



- Lift the back cover off of the device.

To reassemble your device, follow these instructions in reverse order.