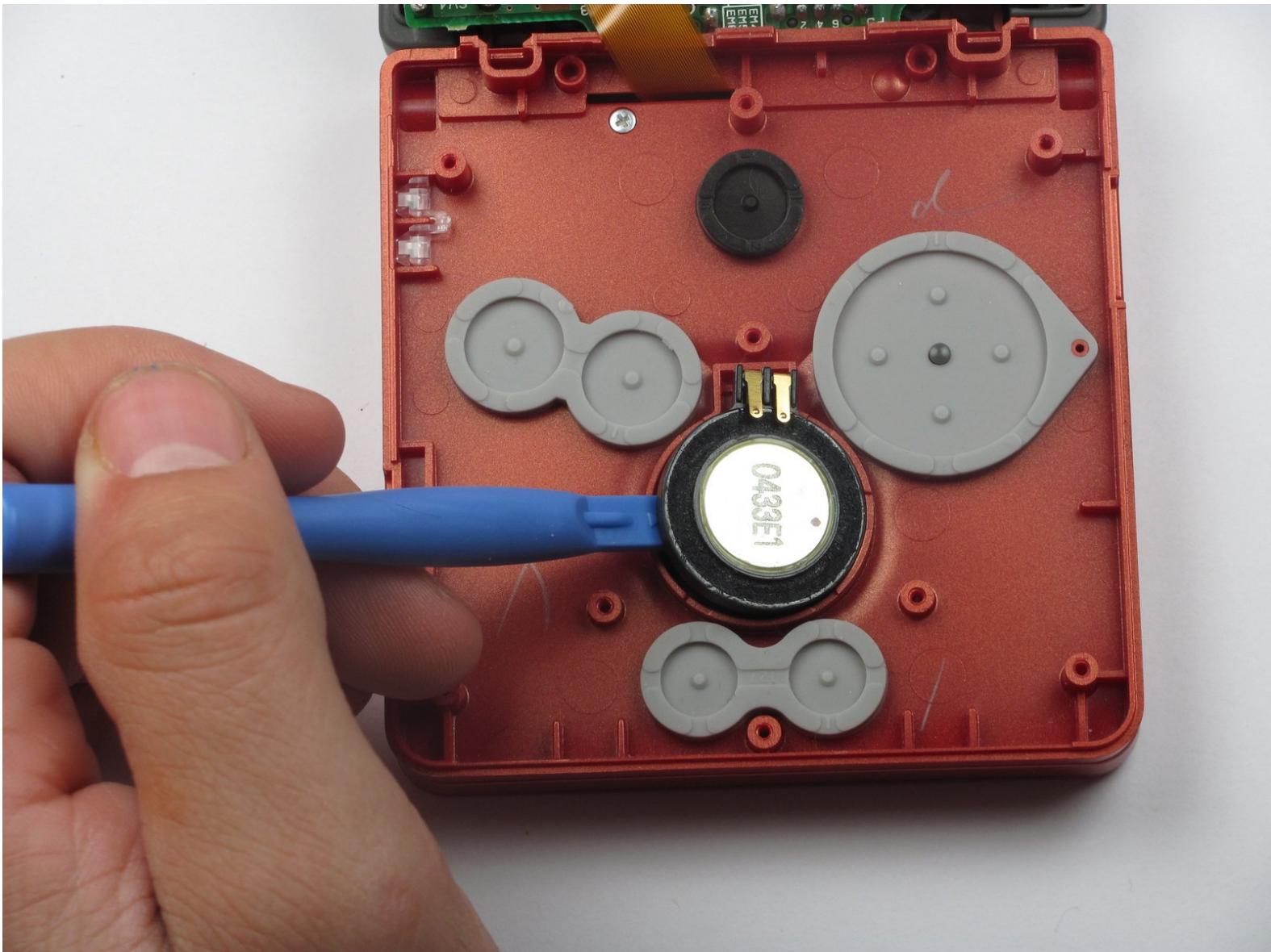




Nintendo Game Boy Advance SP Speaker Replacement

This guide provides step by step instructions on how to replace the speaker on your Nintendo Game Boy Advance SP.

Written By: DJ Pantone



INTRODUCTION

The speaker is located in the center of the Game Boy Advance SP's button panel. It is not wired to the motherboard which allows for an easy fix with no soldering.



TOOLS:

- [Phillips #00 Screwdriver](#) (1)
- [iFixit Opening Tools](#) (1)
- [Tri-wing Screwdriver](#) (1)



PARTS:

- [Game Boy Advance SP Speaker](#) (1)

Step 1 — Removing the Battery



- Use a standard Phillips #00 screwdriver to loosen the 4mm screw that keeps the battery cover attached to the device.

Step 2



- Lift the battery cover up and remove it from the device.
- ⓘ The screw will remain attached to the battery cover because of Nintendo's design.

Step 3



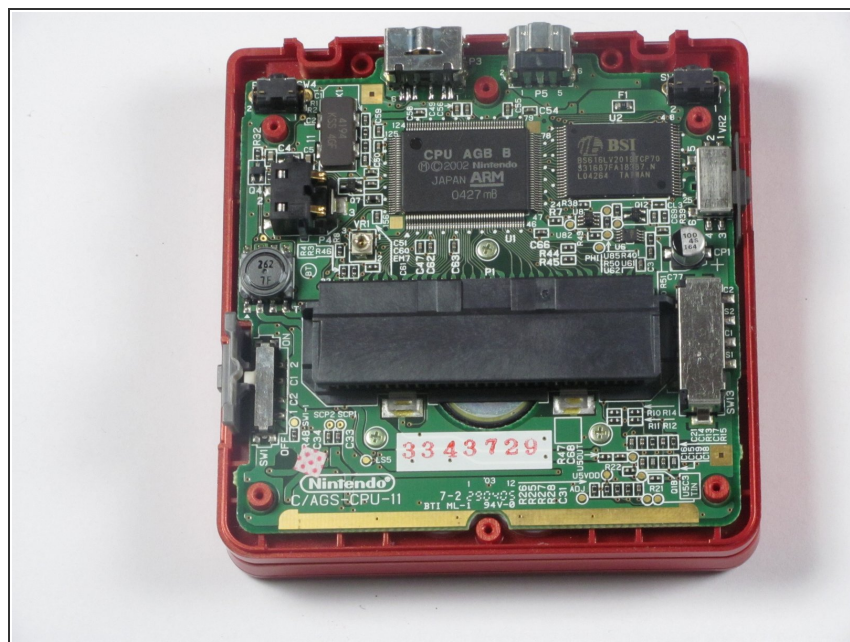
- Use your fingers or a plastic opening tool to remove the battery from the device.

Step 4 — Removing the Back Cover



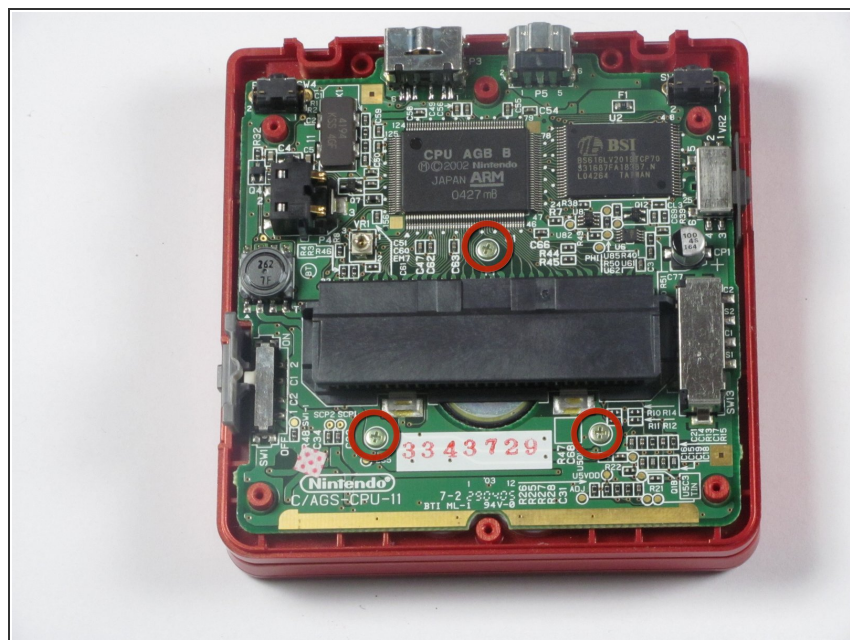
- Using the tri-wing screwdriver, unscrew the screws holding the back cover to the device. The six screws that need to be removed include:
 - Four #00 6.45mm tri-wing screws that are located at the corners of the device.
 - Two #00 4.6mm tri-wing screws that are located at the top-center and bottom-center of the device.

Step 5



- Lift the back cover off of the device.

Step 6 — Motherboard



- Using a Phillips #00 screwdriver, remove the three Phillips #00 4 mm long screws that hold the motherboard to the button panel.

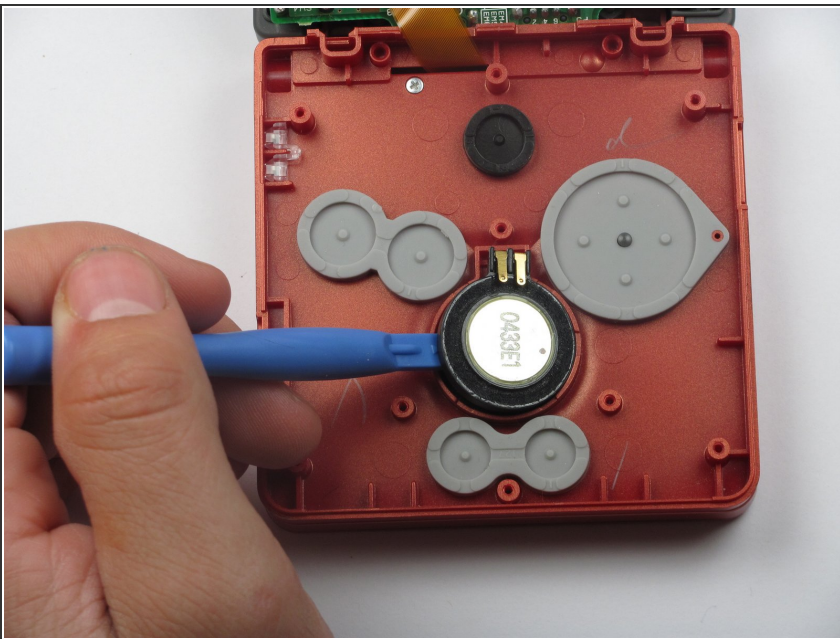
Step 7



⚠ Be careful not to tear the ribbon cable that's connected to the screen. If you tear it, games will not appear on the device's screen!

- Flip the motherboard up and rest it on the other half of the device, so that the back of the buttons are visible as seen in the picture.

Step 8 — Speaker



- Lift the speaker out of its slot in the button panel, using a plastic opening tool or tweezers.
- i** Leave the foam circle inside the speaker's slot in the button panel. It keeps the speaker from moving and improves sound quality.

To reassemble your device, follow these instructions in reverse order.