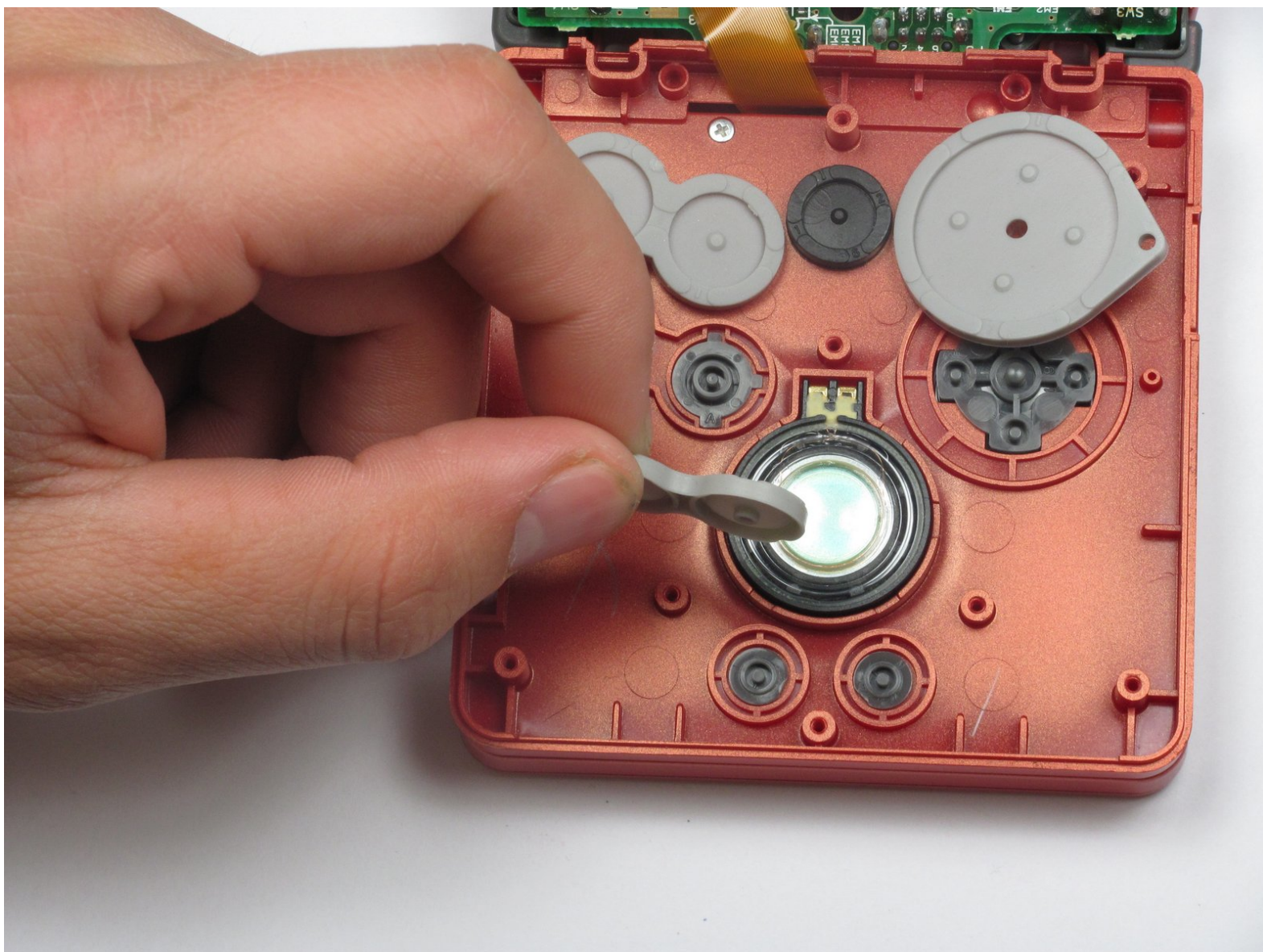




Nintendo Game Boy Advance SP Trackpads Replacement

This guide provides step by step instructions on how to replace the trackpads in your Game Boy Advance SP.

Written By: DJ Pantone



INTRODUCTION

For clarification, the trackpads and the directional pad are not the same. This guide is for replacing the rubber pads below the buttons, not the buttons themselves.



TOOLS:

- [Phillips #00 Screwdriver](#) (1)
- [iFixit Opening Tools](#) (1)
- [Tri-wing Screwdriver](#) (1)



PARTS:

- [Game Boy Advance SP Track Pads](#) (1)

Step 1 — Removing the Battery



- Use a standard Phillips #00 screwdriver to loosen the 4mm screw that keeps the battery cover attached to the device.

Step 2



- Lift the battery cover up and remove it from the device.
- ⓘ The screw will remain attached to the battery cover because of Nintendo's design.

Step 3



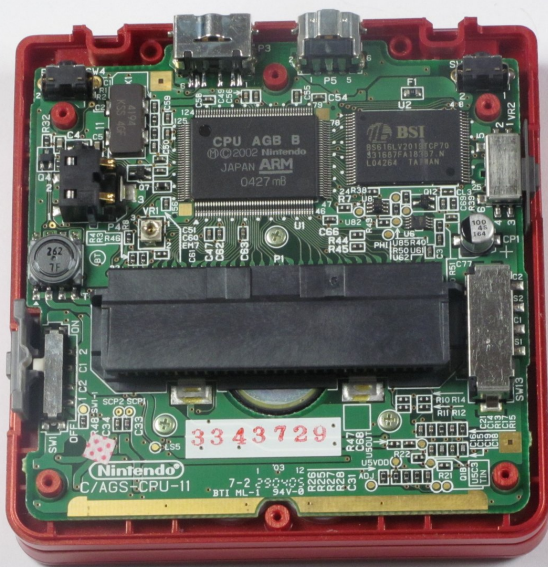
- Use your fingers or a plastic opening tool to remove the battery from the device.

Step 4 — Removing the Back Cover



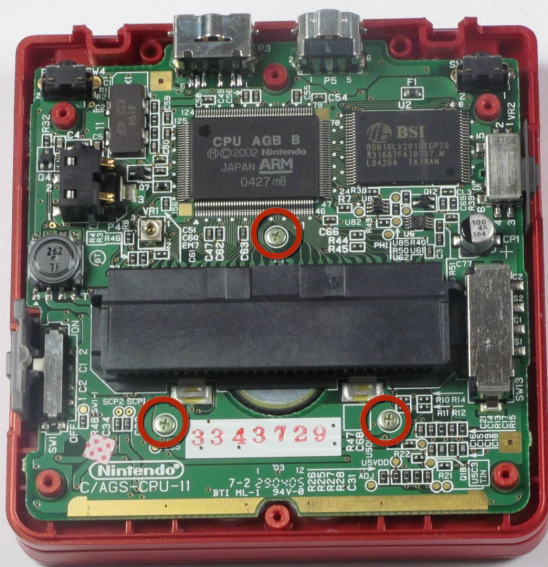
- Using the tri-wing screwdriver, unscrew the screws holding the back cover to the device. The six screws that need to be removed include:
 - Four #00 6.45mm tri-wing screws that are located at the corners of the device.
 - Two #00 4.6mm tri-wing screws that are located at the top-center and bottom-center of the device.

Step 5



- Lift the back cover off of the device.


Step 6 — Motherboard



- Using a Phillips #00 screwdriver, remove the three Phillips #00 4 mm long screws that hold the motherboard to the button panel.

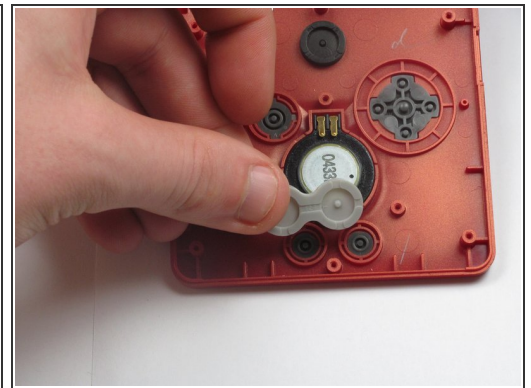
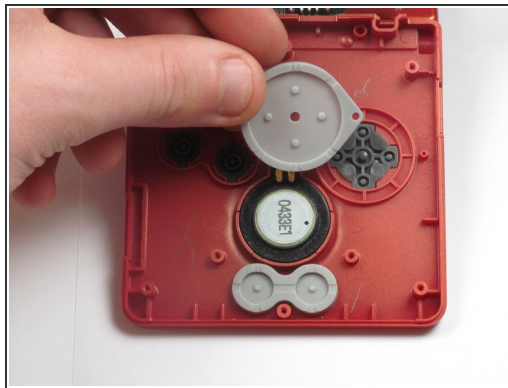
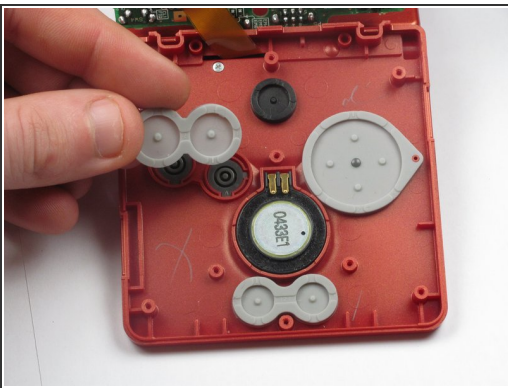
Step 7



 Be careful not to tear the ribbon cable that's connected to the screen. If you tear it, games will not appear on the device's screen!

- Flip the motherboard up and rest it on the other half of the device, so that the back of the buttons are visible as seen in the picture.

Step 8 — Removing the Trackpads



- Using your fingers, gently lift and remove the trackpads covering the following:
 - 'A' and 'B' buttons
 - Directional Control Button Pad
 - 'Start' and 'Select' buttons

To reassemble your device, follow these instructions in reverse order.