



Nintendo GameCube Controller Buttons Replacement

This guide shows how to remove the buttons from the controller.

Written By: Sean Michel



INTRODUCTION

This guide will show you how to properly remove most of the buttons from the controller. You may want to read this if your [buttons are sticky](#)

TOOLS:

- [Tri-point Y0 Screwdriver](#) (1)
 - [Tweezers](#) (1)
-

Step 1 — Back Panel



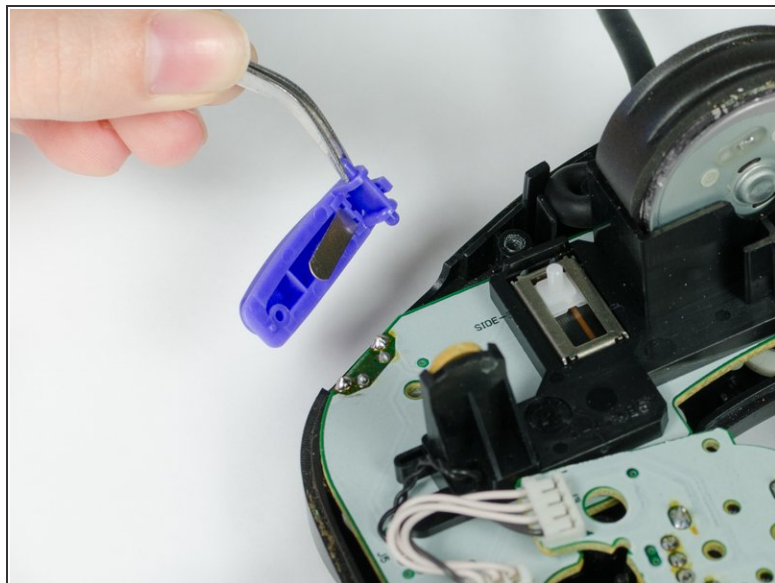
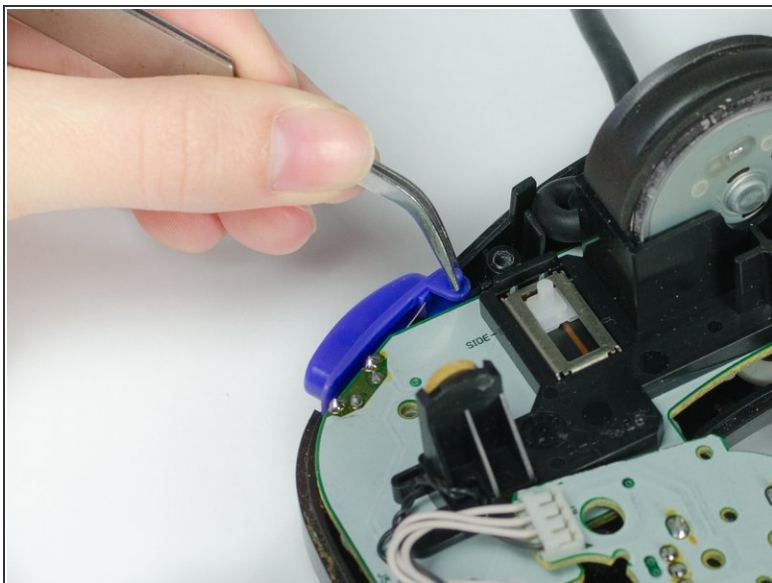
- Place the controller (buttons down) on a solid surface.
- Remove the six 9.2mm Tri-wing Y0 screws that hold the back panel in place.

Step 2



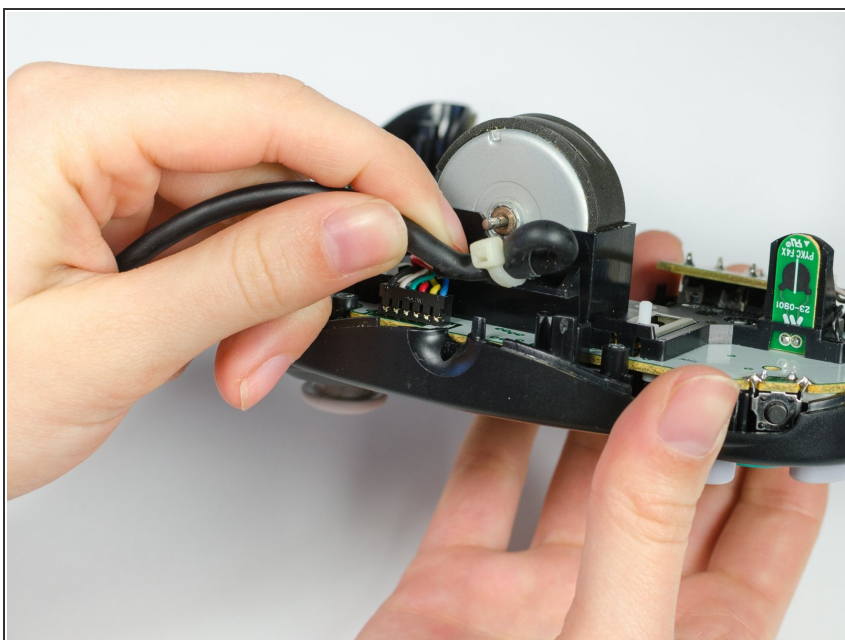
- Gently lift the back panel up, separating it from the front panel.
- ⓘ Some of the buttons may fall out if they are knocked around.

Step 3 — Z Button



- Grab the Z-button by the peg with tweezers and lift it out of the controller.
- ✦ During re-assembly, make sure the plastic rim and spring fit into the slot provided, or else the case will not shut.

Step 4 — Circuit Board



- Carefully unhook the cable that is looped around the peg.

Step 5



- Lift the circuit board out of the controller.
- ⓘ Do not grab the rumble motor to lift the circuit board as shown in the picture. It will in many cases just remove the rumble motor. Instead, grab the edges of the board.

Step 6 — Buttons



- Remove the rubber backing that covers the buttons.

Step 7



- Use tweezers to lift buttons out of their sockets.

☒ When putting the buttons back, make sure the slots properly fit back together.

To reassemble your device, follow these instructions in reverse order.