



# Nintendo Switch Battery Replacement

This guide will show you how to replace the battery in your Nintendo Switch console.

Written By: Taylor Bledsoe



# INTRODUCTION

Nintendo claims that the battery replacement shouldn't be performed by the user, but it's actually a fairly simple repair.

## TOOLS:

- [Y1 Tri-point Screwdriver](#) (1)

*Only used for the first 4 screws*

- [Phillips #00 Screwdriver](#) (1)

*The screws that you use this for are very precise and very tight, make sure your screwdriver is sharp enough*

- [Metal Spudger](#) (1)

**Long, thin, flat**

*This is for prying the battery off, make sure it's the long, thin, metal spudger.*

- [iSesamo Opening Tool](#) (1)

*Just for assisting in removing the back casing, if you're having trouble using your nails and/or don't want to risk damage to the housing using another tool.*

- [Tweezers](#) (1)

**bent tip style**

*not required, but useful for removing the battery cable.*

- [Tri-point Y00 Screwdriver Bit](#) (1)

## PARTS:

- [Nintendo Switch Replacement Battery](#) (1)
- [Nintendo Switch Rear Panel](#) (1)

## Step 1 — Remove Initial Housing Screws



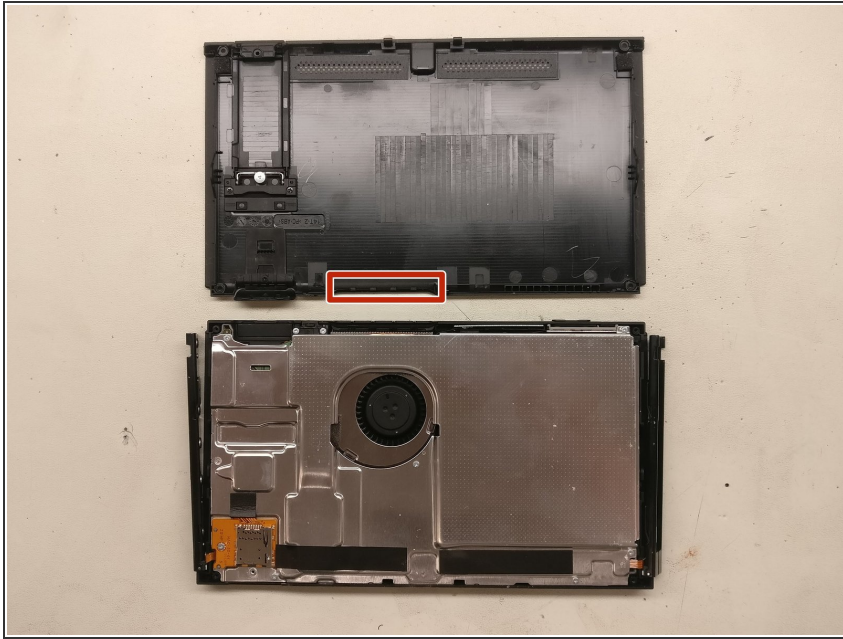
- Using the Y1 Screwdriver, remove the four tri-point screws on the back of the device, in the corners; then a single screw on top, and two screws on either side of the charging port.

## Step 2 — Removing Additional Housing Screws



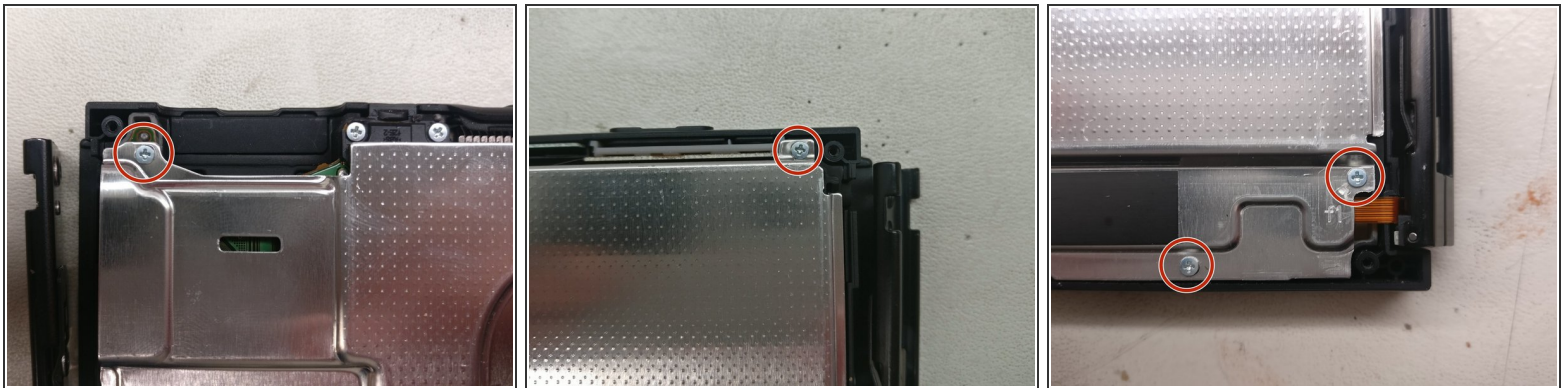
- Be sure to lift up the kickstand and remove this sneaky little screw around the SD card slot, and then the center screws on both sides of the device, where the Joycon brackets are screwed in place.

## Step 3



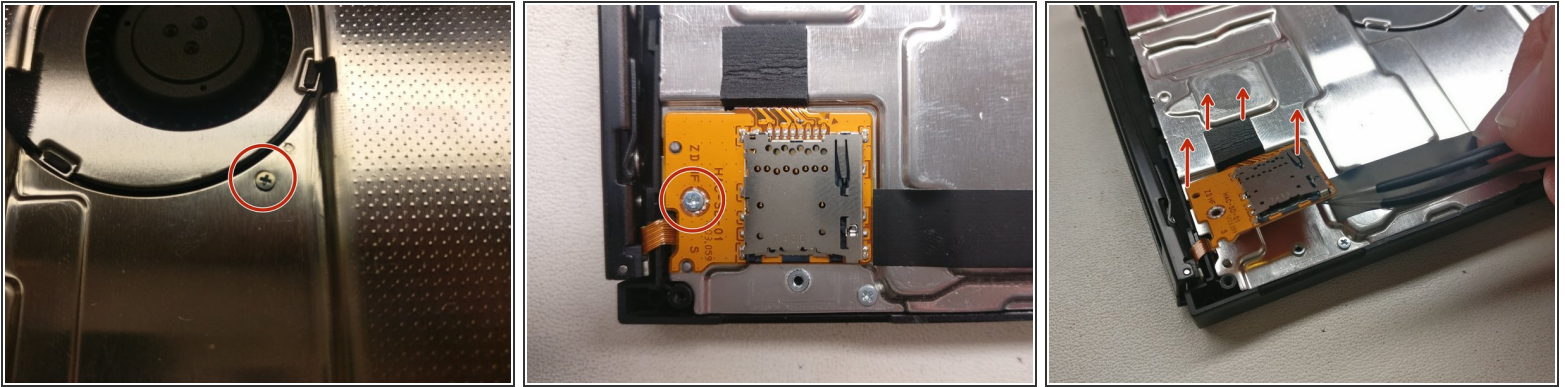
- With the myriad of screws removed, you should now be able to pop the back cover off with minimal prying; you might need an iSesamo style spudger to get it started , just make sure you're careful around the fan exhaust, (marked in the photo) there's some tiny clips that you wouldn't want to pull off with too much force.

## Step 4 — Beginning to Remove the Metal Plate



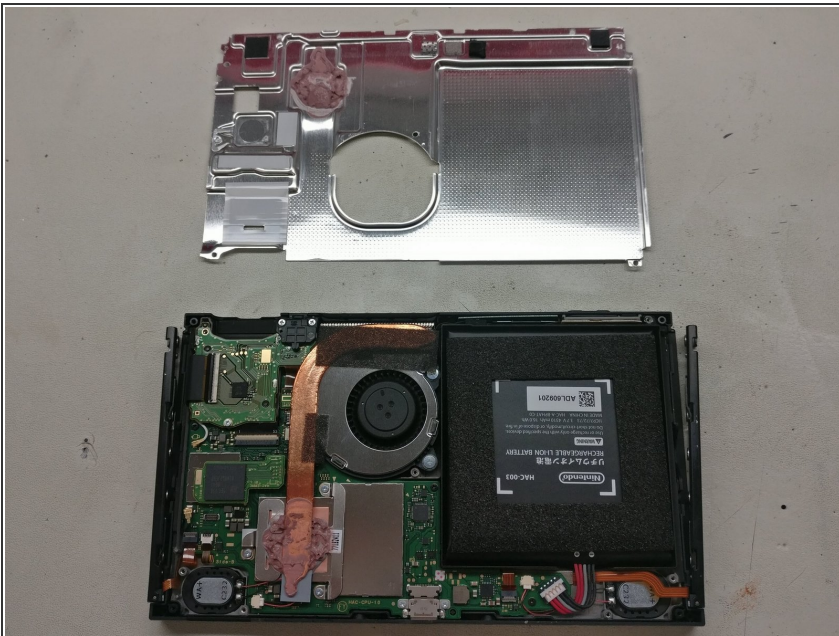
- Remove the circled screws on the back of the metal plate, as indicated by the photos, but don't attempt to pull it off yet.

## Step 5 — Complete Metal Plate Removal



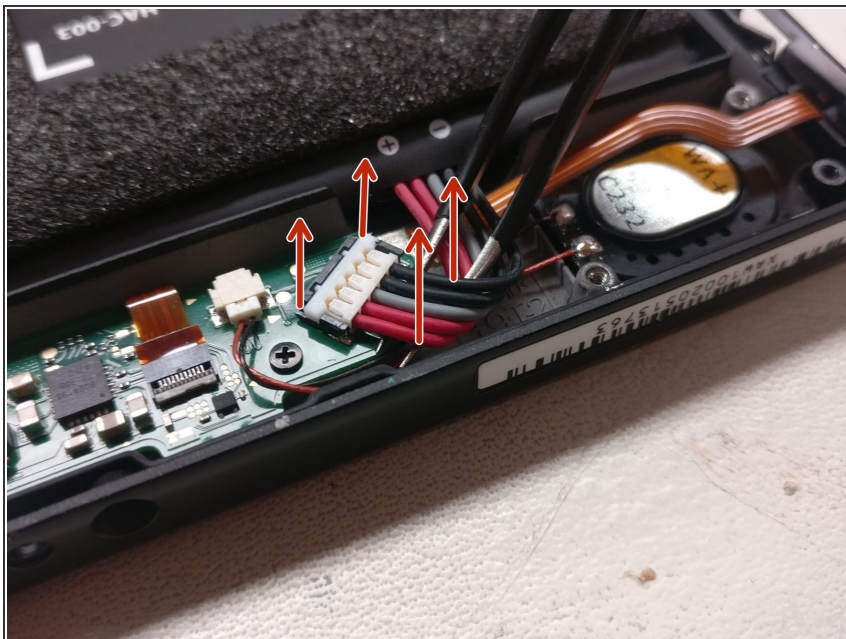
- Take out the center screw, near the blower fan, and the screw in the small SD card reader assembly. Then using tweezers or a spudger, carefully remove the SD card reader and detach the flex cable from the board; you can do this by carefully sliding a spudger under the area covered by the foam and gently prying up. it comes off fairly easily.

## Step 6 — Revealing the Internals



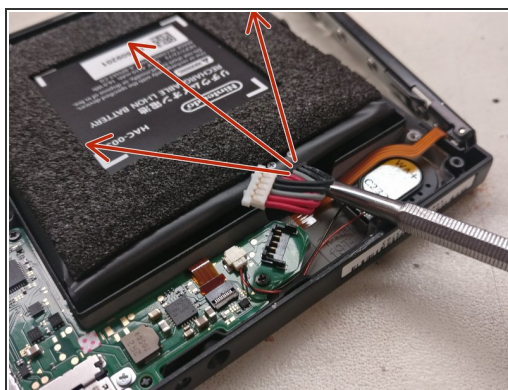
- You can now gently pull the metal plate off and set it aside, revealing the tightly designed internals of the switch, along with your battery.

## Step 7 — Removing the Battery Connector



- To remove the battery, take some tweezers or a spudger and carefully pop the connector off vertically; it looks like it might come out perpendicular to the board, but it comes straight off with some gentle prying from underneath.

## Step 8 — Carefully Remove the Battery



**Caution:** Lithium-ion batteries are fragile and can ignite if punctured or bent. Be careful when prying and do not use metal tools.

- Now finally, use the long flat tipped spudger and use it to carefully separate the battery's adhesive by going in at a low angle in several different directions, I found that going in towards one side, then the other, then down the middle worked well. don't stick it underneath and pry upwards, just separate the adhesive and it comes right out.

To reassemble your device, follow these instructions in reverse order.